



# THE SUN

Seattle Unit 446 Newsletter

April/May 2014

## Schermer becomes Grand LM



John Schermer of Seattle recently achieved the highest rank established by the ACBL, becoming a Grand Life Master. The rank requires 10,000 masterpoints and a win in an NABC or world championship.

John's record includes wins in the Vanderbilt Knockout Teams, North American Swiss Teams, Senior Knockout Teams, and US Senior Bridge Championships, and a gold medal in the senior teams at the 2004 World Team Olympiad.

John rarely plays locally, but became a Grand Life Master on "home turf," earning his 10,000th masterpoint as a member of the winning team in the finals of the unit's 2013 Round Robin competition.

Other Unit 446 Grand Life Masters include Henry Lortz, Pat Dunn, Polly Dunn, and the late Joe Jabon and George Steiner.

For a hand played expertly by John, reported by Round Robin teammate Dick Yarrington, see page 9.

**Check out Unit 446's newly redesigned website at**

**<http://www.bridgeinseattle.org>**

## Unit Membership Meeting Notice

The annual unit membership meeting will be held at the May Knockout Sectional just before the start of play on Saturday evening, May 24 at 6:45 pm. In addition to a summary of the unit finances and direction, this meeting will have a vote on a set of bylaws changes proposed by the unit board.

Most of these changes are to clean up clear mistakes, or to clarify places where the bylaws are unclear, but there are three intentional changes. First is to allow the registered agent of the unit to use a home address as the unit address. Second is to give the board the right to meet online using electronic conferencing software, but only if the full board agrees to meet this way. Finally, being willing to receive meeting notices by e-mail is made a requirement rather than an option. (To be clear, this last change is only for the board of directors, not the membership at large.)

The full text of the current bylaws and the proposed changes are available online at the unit board page on the unit web site: <http://www.bridgeinseattle.org/board/>. They will also be available in paper form at the May tournament. Please make time to come back from dinner a few minutes early to join us.

# CLUB NEWS

## University of Washington Bridge Club

Christ Episcopal Church  
1305 NE 47th St, Seattle  
[annromeo@gmail.com](mailto:annromeo@gmail.com)

Come join us for a friendly game every Sunday night at 6:00 (except during our local sectionals). Doors are open at 5:00 for practice play, and you're more than welcome to help our collegiate players master a new convention or card-playing sequence. Our hospitality is great, we're usually done by 9:30, and street parking is free in the U-District on Sunday. Hope to see you soon!

—Ann Romeo



## Mercercrest Bridge Club (MCBC)

Mercer Island Congregational Church  
4545 Island Crest Way, Mercer Island  
<http://www.bridgeinseattle.org/mercercrest/>  
[mercerislandbridge@gmail.com](mailto:mercerislandbridge@gmail.com)

Come out on Tuesday nights to the Mercercrest Bridge Club! We pride ourselves on our hospitality and our friendliness, and we also have competition for players of all levels. Every week the hands are pre-made, hand records are available, and full results including the contracts on all the hands are available online a few minutes after the end of the game. With the move to the new unit website, you can now get the latest results at:

<http://www.bridgeinseattle.org/mercercrest/results/>

Upcoming Special Games:

- April 1: Inter Club Championship—your results are matchpointed with clubs all around the country.
- April 22: Charity Game
- May 6: Club Championship
- May 20: Unit Game

All our special games are a chance to win extra masterpoints. The two in April are \$1 extra to play in while the two in May are our standard \$8 entry.

Top masterpoint winners in January out of 73 players receiving masterpoints were Ray Miller (3.42), Dell Berg

(3.33), David Hankins (3.33), Cornel Galer (2.80), Stan Christie (2.68), and David Wright (2.68). Top winners in February out of 66 winners were Mike Christensen (5.95), Ray Miller (4.80), Connie Heller (3.05), Jen Chalfan (2.72), and David Wright (2.60).

Ray Miller recently decided to retire from the directing staff at our game. We are grateful for all his hard work since our group took over the game from Marsha Rayton in 2012.

—Jeff Ford



## Seattle Bridge Center (SBC)

1539 NE 145th, Seattle  
(206) 282-6414

[seattlebridgecenter@yahoo.com](mailto:seattlebridgecenter@yahoo.com)

<http://seattlebridgecenter.tripod.com>

SBC now has hand records for every session and remote electronic scoring. We have had a few difficult games but it all seems to be going smoothly now. We do not have hand records online at this time but hope to cross that hurdle soon. Thank you for your patience during this learning process.

Mark and Patti are back from a much needed vacation in Mexico. Thank you Nick Tipton and Bernard Mann for directing the games in their absence.

**ACBL-WIDE CHARITY GAME** Tuesday, April 8 at 10:30 am.

**CLUB CHAMPIONSHIP GAMES** every session Sunday, April 13 through Saturday, April 19.

**WEST COAST STAC GAMES (SILVER POINTS)** every session Monday, May 5 through Sunday, May 11.

**INTERNATIONAL FUND GAME** Wednesday, May 14 at 10:30 am.

**SPECIAL UNIT SANCTIONED GAME** Sunday, May 18 at 1:00 pm. Reservations please.

**SBC WILL BE CLOSED** Friday, May 23 through Monday, May 26 for the Knockout Sectional in Bothell.

**FRIDAY EVENING GAME** with hot soup and homemade bread in case you have not had dinner.

(Continued on page 3)

# CLUB NEWS

*(Continued from page 2)*

**BRIDGE CLASSES** — Nick Tipton is teaching an introduction to bridge with classes on Monday evenings at 7:00 pm and intermediate classes on Saturday mornings. Contact Nick by e-mail at [nick\\_tipton@yahoo.com](mailto:nick_tipton@yahoo.com).

**HALF PRICE GAMES** (\$4) Wednesday mornings at 10:30 am and Sunday afternoons at 1:00 pm. Full-time students always pay half price.

**A PARTNER IS ALWAYS AVAILABLE.**

**JANUARY TOP MASTERPOINT WINNERS** were Rose Bolson, Mary McCune, Terry Chinn, and Corrine Joinette.

**FEBRUARY TOP MASTERPOINT WINNERS** were Joe Ulrich, Bob Kirk, Frank Burke, and Terry Chinn.

—Patti McCallum



## Des Moines Bridge Club (DMBC)

Des Moines Senior Center  
2045 S 216th St  
(206) 824-1192

<http://home.comcast.net/~yesk/>

[yesk@comcast.net](mailto:yesk@comcast.net)

Yvonne Kirkland is the owner and director. For a partner, call or e-mail. We welcome new members to come and enjoy our stratified game. We meet on every Friday starting at 10:30 am; arriving a little early is appreciated. We have special games on the 4th week of the month (April 25 and May 23). We continue to have an array of delectable eats. Only \$6.00.

Now on the lighter side—our director Yvonne was serenaded on Valentine’s Day and presented with a rose from Jim Burbidge’s group, the Harmony Kings. Comradeship and duplicate bridge playing works well at the Des Moines Bridge Club. Thanks Jim for making this happen.

My prayer is that everyone that comes to the club has fun and does their very best. Hope to see you.

—Yvonne Kirkland



## Eastside Bridge Center (ESBC)

8151 164th Ave NE, Redmond

(425) 881-6110

[eastsidebridge@frontier.com](mailto:eastsidebridge@frontier.com)

<http://www.bridgewebs.com/eastside> [note new address]

There is much to report from the Eastside Bridge Center! On March 15, we celebrated Greg Ho’s achievement of Platinum Life Master status – 10,000 masterpoints! Also, our new website is now complete and we wish to thank Dave Hildebrand for his great work.

We have many events planned for April and May. On April 12, we will celebrate the one-year anniversary of the new ownership, thanks to the support from all of our players. Also in April, we will host a week of ACBL charity games and a week of local charity games.

A new round of bridge lessons will start on April 1. Please see our website for details.

May will include a week of club championships and another Ladies’ Night Out game.

See you at the club!

—Wayne English



## Mercer Island Bridge Club (MIBC)

[formerly Newcastle Bridge Club]

Mercer Island United Methodist Church

7070 SE 24th, Mercer Island

(425) 351-2464

[bnist2@gmail.com](mailto:bnist2@gmail.com)

Mercer Island is the fastest-growing bridge club in the area. We are enjoying our fantastic new location right alongside I-90 on Mercer Island. Since reopening the doors we have celebrated with both Marilyn Helbig and Myrtis Holdren for becoming Life Masters. On April 3 we will honor Penny and Ray Lepp who just became Life Masters playing together in Vancouver.

We continue to offer hot snacks, dessert, and fruit and veggies as well as beverages on Thursday night. On April 24 we will reintroduce our Pizza Pairs offered on

*(Continued on page 4)*

# CLUB NEWS

(Continued from page 3)

the last Thursday of the month. As this is the first Pizza Pairs, I would appreciate reservations for this event to guarantee enough pizza for everyone. Special orders will be honored if placed by Wednesday morning. On Tuesdays at 11:00 am, we continue to offer a light lunch with the entry fee.

We make every effort to accommodate singles. Advance notice would be appreciated, but not required.

**SPECIAL TEAM GAME** – On Thursday, May 1 we will be hosting a special team game honoring our friends Julie and Ole Godefroy as they celebrate 50 years of marriage and almost as many years playing bridge together! For this special event, reservations are required.

**NEW 0-500 GAME** – Starting April 7, we will be offering a new 0-500 Monday evening game. This game will be run by Craig Ruden, Craig Mills, and Moises Saul. The game will be complete with hand records, duplicated boards, and light snacks. The director will be available after the game to answer questions on the play or bids of specific hands. The plan is to play just 24 boards allowing newbies a little more time to play each board. We especially encourage those without partners to attend our games. We will make sure that everyone has a partner.

Remember almost all games continue at the same low price of \$8 per session. The only exception is STaC games which have a higher sponsor fee. Punch cards are available at 14 games for \$100.

**NEW CLASSES** — Starting April 15 at 6:00 pm, Barbara will offer Two Over One Part 2, four weeks of conventions primarily used to support the 2/1 bidding system. \$100. Starting April 16 at 6:00 pm, Barbara will offer Advancing Players II. This is a custom class and will be offered only to those who have had at least one Advancing Player class. Four weeks, \$100.

**LOCATION** — Come check out the new facilities at Mercer Island United Methodist Church, 7070 SE 24th. Please allow parking on the upper level for people with mobility issues. There is plenty of parking in the back of the building.

—Barbara Nist



## Rainbow Bridge Club (RBC)

<http://www.rainbowbridgeclub.org>

All games are cancelled while the club searches for a new location. Check the website for information on Rainbow's status.



## Alki Bridge Club (ABC)

West Seattle Senior Center  
4217 SW Oregon, Seattle  
(206) 484-3303

[nick\\_tipton@yahoo.com](mailto:nick_tipton@yahoo.com)

<http://www.alkibridgeclub.com/>

We've got two solid games each week, on Mondays and Wednesdays at 10:30 am with a break for lunch. Every game is open and the first Monday and Wednesday of every month is a special game. We average 14-15 tables each game! Get there early to ensure seating! Cost is just \$6 for all games. We have an excellent facility with a spacious and bright room and a full service deli providing excellent soup, salads, and sandwiches for lunch.

For directions, see website listed above. Contact Nick for partnerships or other information.

—Nick Tipton



## Emerald Bridge Club (EBC)

Brooklake Community Center  
726 S 356th St, Federal Way  
(253) 939-0733

<http://home.comcast.net/~emudd/bridge.html>

Stratified Open Pairs, Tuesdays and Thursdays at 10:00 am. Need a partner? Call Dennie Dye at (253) 939-0733. Come and join us at the Emerald Bridge Club – it's a gem of a game!

—Carmen Flak



## MEMBERSHIP NEWS

Greetings! The Seattle Bridge Unit (SBU) would like to extend a hearty welcome to all new members and to all members who recently transferred into our unit! All new members will receive one free play at each of the local clubs.

If you'd like to get involved with helping the growth of bridge in our area and showing people how fun and amazing this game is, please don't hesitate to contact a board member. SBU is run 100% by volunteers who want to keep bridge in Seattle awesome. We would love your help!

**New Members:** Laura Barker, Marjorie Cornell, Melanie Doren, Barrie Galanti, Mary Ann Harvey, Elana Helfand, Jacqueline Hennes, Eva Johansson, David Kerr, Melody McGinnis, Agneta Olsson, Gordon Schurman, Susan Sever, Lilia Sharp, Patsy Thrall, Sandra Tone

**Transfers:** Betty Lou Biggs, Dalyce Christner, Robert Eveleigh, Sheila Kim, Sally Read, Carol Richards, James Rush, Ilze Schubert

**In Memoriam:** Altha Kelley, Joanne Torrance

CONGRATULATIONS TO THE FOLLOWING MEMBERS ON THEIR RANK ADVANCEMENTS!

**Junior Master (5 MPs):** Patti Brawer, Mel Geokezas, Richard Hedreen, Dr. Leslie Klaff, Charlotte Riviera, Brian Turner, Stephen Walker

**Club Master (20 MPs):** Dr Stephen Epstein, Harish Girdhar, Nancy Glaser, Betty Hedreen, Morton Latta, Sharon Riddle, Leslie Schiffman, David Schweinler, Franklin Tiangsing, Stephen Urban

**Sectional Master (50 MPs):** Philip Collins, Paul Evanoff, Lewjean Holmes, Don Logerwell, Lynne Rigby, Carol Rosenthal, Keith Rosenthal, Lillian Thorsen

**Regional Master (100 MPs):** Victor Magruder, Sandy Thor, Russell Vaughan

**NABC Master (200 MPs):** Christine McKenna, Bruce Scharf

**Advanced NABC Master (300 MPs):** Thomas Brown, Monty Gray, Craig Ruden, Elizabeth Saul

**Life Master (300/500 MPs):** Mary Hanson-Spofford, Moises Saul

**Bronze Life Master (500 MPs):** William Campbell, John Swanson

**Emerald Life Master (7500 MPs):** Patti Hartley

Total Members: 1376 as of 3/1/14

—Kim Eng



Winners in the unit's Mini-McKenney and Ace of Clubs masterpoint races for 2013 were recognized at the Sweetheart Sectional in February. From left (more or less): Kim Eng, Barbara Nist, Yoko Barnett, Rose Bolson, Bill Campbell, Mike Christensen, Diane Felure, Greg Ho, Tom Brown, Paul Evanoff, Leanne Creech, Craig Ruden, Victor Magruder. For a complete list of winners, see page 6.

# 2013 MASTERPOINT RACES

## *Mini-McKenney*

[total masterpoints won]

### 0 to 5 Masterpoints

Rank		Points
1(2)	Paul Evanoff	54.92
2	Ferechteh Barazi	32.30
3	Franklin Tiangsing	22.28

### 5 to 20 Masterpoints

1(1)	Daniel Poore	140.05
2	Keith Rosenthal	38.07
	Carol Rosenthal	38.07

*Daniel was 6th in the ACBL-wide race in this category. Congratulations!*

### 20 to 50 Masterpoints

1	Victor Magruder	54.62
2	Russell Vaughan	53.51
3	Gene Gousie	45.34

### 50 to 100 Masterpoints

1(2)	Carol Anderson	108.54
2	John Krah	51.31
3	Sandy Thor	50.60

### 100 to 200 Masterpoints

1(1)	Thomas Brown	164.46
2(2)	Karen Hudesman	141.14
3(3)	Larry Baum	138.14

### 200 to 300 Masterpoints

1(2)	Diane Felure	158.67
2(3)	Dave Drischell	140.54
3	Bill Stewart	131.17

### 300 to 500 Masterpoints

1(3)	William Campbell	200.20
2	Leeanne Creech	159.59
3	Kathy Gilman	101.47

### 500 to 1000 Masterpoints

1(1)	Michael Christensen	480.83
2(2)	Michael Ring	332.84
3	Greg Herman	245.64

*Mike was 9th in the ACBL-wide race in this category. Congratulations!*

### 1000 to 2500 Masterpoints

Rank		Points
1(1)	Kim Eng	385.97
2(2)	David Taylor	367.01
3(3)	Jeff Ford	365.51

### 2500 to 5000 Masterpoints

1	Mary McCune	321.08
2	Craig Zastera	314.15
3	David Hildebrand	303.00

### 5000 to 7500 Masterpoints

1(3)	Barbara Nist	343.23
2	Dave Grubbs	314.68
3	Patti Hartley	278.83

### 7500 to 10,000 Masterpoints

1(1)	Sun-O Ho	602.25
2(2)	Ray Miller	391.22
3	Ken Christiansen	310.61

### Over 10,000 Masterpoints

1(2)	Patrick Dunn	925.42
2(3)	Polly Dunn	856.54
3	Ken Scholes	453.14

## *Ace of Clubs*

[points won in club games]

### 0 to 5 Masterpoints

Rank		Points
1(2)	Paul Evanoff	37.52
2	Ferechteh Barazi	28.50
3	Franklin Tiangsing	13.50

### 5 to 20 Masterpoints

1	Helen Pyne	31.40
2	Marilyn Dierickx	21.13
3	David Schweinler	15.21

### 20 to 50 Masterpoints

1	Sylvia Bailey	38.36
2	Gene Gousie	33.20
3	Al Lunde	30.75

### 50 to 100 Masterpoints

1	Carol Anderson	61.45
2	Susie Nadeau	38.07
3	Lyn Tierney	24.65

### 100 to 200 Masterpoints

Rank		Points
1	Craig Ruden	53.36
2	Thomas Brown	50.90
3	Karen Hudesman	46.40

### 200 to 300 Masterpoints

1(1)	Diane Felure	91.50
2(3)	Dave Drischell	77.99
3	Tina Villines	51.15

### 300 to 500 Masterpoints

1	Leeanne Creech	62.35
2	William Campbell	60.69
3	Martin Gelfand	60.07

### 500 to 1000 Masterpoints

1(1)	Michael Christensen	172.14
2	Michael Ring	124.68
3	Joe Collier	91.97

### 1000 to 2500 Masterpoints

1(1)	Yoko Barnett	176.98
2	Dennis Duryea	142.16
3	Corrine Joinette	108.48

### 2500 to 5000 Masterpoints

1	Cynthia Glad	136.00
2	Mike Bovarnick	115.99
3	Paul Schwaighart	113.51

### 5000 to 7500 Masterpoints

1(1)	Rose Bolson	129.83
2	Barbara Nist	47.91
3	Clay Sundermeyer	41.12

### 7500 to 10,000 Masterpoints

1(1)	Sun-O Ho	230.28
2	Harry Steiner	87.55
3	Dee Berry	83.67

### Over 10,000 Masterpoints

1(2)	Steve Mansfield	130.69
2	Dick Yarrington	111.64
3	Maurice Blustein	84.40

*Ranks in parentheses indicate top 3 finishes in District 19-wide masterpoint race.*

*Congratulations to all high finishers! For complete results, see <http://www.acbl.org/about/mpraces.html>*

## UNIT 446 TROPHY HISTORY

### Microsoft Trophy Winners

2013 Dick Yarrington  
 2012 Harry Steiner  
 2011 Dave Grubbs  
 2010 Ken Scholes  
 2009 Ken Christiansen  
 2008 Neil Ballard  
 2007 Rod Caldwell  
 2006 Stan Christie  
 2005 Pat Dunn  
 2004 Pat Dunn  
 2003 Dick Yarrington  
 2002 Harry Steiner  
 2001 Pat Dunn  
 2000 Janet Daling  
 1999 Roger Urbaniak  
 1998 Joe Jabon  
 1997 Joe Jabon  
 1996 Joe Jabon  
 1995 Joe Jabon  
 1994 Harry Steiner  
 1993 Harry Steiner  
 1992 Susan Urbaniak  
 1991 Paul Schwaighart  
 1990 Sadu Marrott  
 1989 Pat Dunn  
 1988 Carlyn Steiner  
 1987 Henry Lortz  
 1986 Susan Urbaniak  
 1985 George Steiner  
 1984 Steve Mansfield  
 1983 Darryl Pedersen  
 1982 Bill Hagen  
 1981 George Steiner  
 1980 Ray Loftis  
 1979 George Steiner  
 1978 Phyllis Novak  
 1977 Mark Neils  
 1976 Bert Naness  
 1975 Henry Lortz  
 1974 Ken Christiansen

### Jabon Trophy Winners

2013 Daniel Poore  
 2012 Monty Gray  
 2011 Craig Ruden  
 2010 Gary Gelow



*Dick Yarrington (left) claims the 2013 Microsoft Trophy*



*Unit board president Jeff Ford (left) presents the 2013 Jabon Trophy to Daniel Poore*

2009 Leanne Creech  
 2008 Roger Lowe  
 2007 Donald & Linda Stein  
 2006 Christine Ding  
 2005 Brian Zaugg & Liliana Diaconescu  
 2004 Shawn Abernethy  
 2003 Ilarie Letca  
 2002 Jeff Wallace  
 2001 Margaret Marshall  
 2000 Yong Cao

1999 Laurie & Bill Sayer  
 1998 Wentao Chen  
 1997 Iskender Khan  
 1996 Art De Lannoy  
 1995 Milli & Gari Andreini  
 1994 Chaoming Zhang

### Leo the Liar by Dick Yarrington

Leo Schwartz found a beautiful play in the finals of the 2013 Round Robin teams. He picked up ♠Ax ♥Q10 ♦KQJ10xxx ♣xx. His RHO opened 1C, Leo bid 1D, LHO made a negative double, and the opponents soon reached 4H declared by RHO.

Leo led the diamond K. Dummy came down with ♠Qxxx ♥AJxx ♦Ax ♣jxx. Declarer won the diamond A and led a heart to his K on which Leo nonchalantly dropped the Q! Declarer naturally thought that trumps were splitting badly and led a spade from hand. Leo played low and the Q won in dummy. Declarer now ducked a spade around, forcing Leo to win his A. Leo cashed a high diamond and exited with a club, which declarer won in hand. Declarer now attempted to cash his spade K but out of nowhere Leo ruffed in and led a third round of diamonds, promoting a trick for his partner's 9 of hearts (Maurice Blustein's favorite card!).

Declarer, who held ♠Kxx ♥Kxxx ♦xx ♣AKxx, could not be faulted. It was plausible to assume that trumps were splitting 4-1 and that they could play four rounds of spades ruffing the last round, finishing the trumps and

in effect endplaying RHO to lead away from the club Q. This was not a win on the board, but a much-needed push as the old man at the other table went set. Bravo!

## EDUCATIONAL PROJECTS

### Seattle NextGenBridge

*Anne Farmer*

Seattle NextGenBridge (SNGB) is an instructional bridge program designed for middle and high schools. It features a sixteen-hour curriculum during the school year and continues with summer camps and Saturday bridge at a centrally-located community center. The mission of SNGB is to bring the sport of the mind—the world's greatest card game—to the next generation. We are very proud to launch SNGB in Spring 2014 with our sponsors and partners in six Seattle middle schools.

On February 7, the Seattle bridge community came together to support this project, with our partners Seattle Parks & Recreation and Seattle Public Schools, at a luncheon featuring Bryan Delfs, Education Program Manager for the ACBL. We received pledges to defray equipment expenses from Queen Anne Bridge, Bridge4Youth, Seattle Bridge Unit 446, and individual bridge players in the area. This project is unprecedented and we are very fortunate to have the community support and the support of the ACBL.

The first schools chosen are the six middle schools (with a total student population of 5,528) served by Seattle Parks & Recreation's Community Learning Centers, which provide a place where students who are struggling find hope and opportunity through academic,

enrichment, and recreational offerings. SNGB will provide high-caliber program presenters to administer the curriculum to these students. We are looking for volunteers willing to help introduce bridge at schools. All ACBL members are welcome to volunteer! Our goal is to reach five new schools each year. All Seattle high schools and colleges are welcome to apply for this program.

Please join us in Seattle NextGenBridge. For more information, contact Anne Farmer at (206) 441-7244 or [seattlenextgenbridge@gmail.com](mailto:seattlenextgenbridge@gmail.com).

### Bridge4Youth Summer Camp

*Ann Romeo*

Send the kids in your life to bridge camp! This summer, Seattle's Bridge4Youth is holding its fourth annual Seattle Day Bridge Camp for kids ages 10-18 from Monday, July 7 through Saturday, July 12. This year the venue will be the Mercer Island Congregational Church (also the site of the Tuesday night Mercercree game). Nick Tipton and Alan Tesler will be returning as teachers, assisted by Cheryl Zettler, Cristal Nell, Ann Romeo, and others. There is a fee of \$50.00 to cover supplies. Learn more about the camp and download a registration form at <http://www.b4youth.org>, or contact Larry Li at [larry@pacgal.com](mailto:larry@pacgal.com) or (206) 353-7220.

#### **GRAND NATIONAL TEAMS DISTRICT FINALS**

**Flights A (0-6000) and C (0-500/NLM): April 5-6**  
**Vancouver Bridge Centre, 2776 E. Broadway, Vancouver BC**

**Open and Flight B (0-2500): April 19-20**  
**IUOE Union Campus, 18701 120th Ave. NE, Bothell WA**



## ARTICLE

### A Summer Daydream, or The Walkoff Home Run

*by Dick Yarrington*

It's the last day of the 4th of July weekend and you are finishing your morning coffee. You are considering what you will be doing for the day when the telephone rings. Someone asks you if you want to get an online game going shortly. You decide why not? By the way, the someone happens to be Bob Hamman. For those of you new to the game, he is a multi-time World Champion and multi-time national winner. He is easily one of the most accomplished players in the history of the game. In short, if he asks if you want to play online, you say yes.

This was in fact an experience that John Schermer had last summer. Shortly thereafter, he and Neil Chambers were playing against Hamman and Sam Lev, their teammates in the US Senior Bridge Championships later that month. On the last hand of the match, John was dealt ♠x ♥10x ♦AJ ♣AKQJ10986. His partner passed and Hamman opened 1D. What would you bid? John decided to bid 3N. After all, he had nine tricks if his partner could stop the majors.

Lev passed and now Chambers bid something unexpected — he bid 4N! What would you do? This can't be Blackwood as partner has already passed. John reasoned that his partner was trying to show him the very best maximum hand that he could have. Accordingly, John jumped to 6C. The opening lead was a low heart. These were the hands:

Dummy: ♠AQxxx ♥Axx ♦10xx ♣xx  
 Declarer: ♠x ♥10x ♦AJ ♣AKQJ10986

John ducked the heart as Hamman won the K. At trick two a high diamond was returned. What do you think happened next? Believe it or not, John claimed and Hamman conceded! You might ask what was going on?

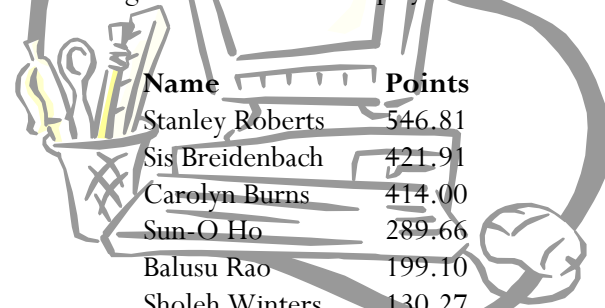
John stipulated that he believed Hamman had both high diamonds and the spade K for his opening bid. Therefore, he would be squeezed on the run of the trumps.

The ending would look like this: dummy would have AQ of spades and a diamond. John would have his small spade, the diamond J, and the last club. Hamman would have Kx of spades and the diamond K. When the last club is cashed, dummy has an easy diamond pitch, but what can Hamman pitch? If he pitches a spade, the A will now drop the K, while if he pitches his last diamond, declarer's J is high. It would seem easy to call this a walkoff home run.

Practice made perfect as the team went on to win the senior team trials, qualifying to represent the US at the world championships last fall.

### 2013 Online Masterpoint Winners

By ACBL policy, masterpoints won online are not included in the Mini-McKenney or Ace of Clubs masterpoint race totals (reported on p. 6). Below is a list of the unit's top online masterpoint winners in 2013. Congratulations to all the players!



Name	Points
Stanley Roberts	546.81
Sis Breidenbach	421.91
Carolyn Burns	414.00
Sun-O Ho	289.66
Balusu Rao	199.10
Sholeh Winters	130.27
Monty Gray	99.20
Harish Girdhar	76.70
Moises Saul	72.73
Margaret Webb	65.88

# SWEETHEART SECTIONAL RESULTS



*Bill Campbell, Ted Bartunek*

## Friday Afternoon Open Pairs

MPs	A	B	C	Names	Score
9.17	1	1	1	Bill Campbell - Ted Bartunek	63.33%
6.88	2			Rudolph Lisa - Elizabeth Fujii	61.64%
3.17		2	2	Bill Rose - Charles Catino	58.17%

## Friday Afternoon 0-200 Pairs

MPs	A	B	C	Names	Score
2.09	1	1		Bill Cochran - Royal Larson	59.66%
1.57	2			Len D Amato - Dora D Amato	59.47%
1.28		2		Victor Magruder - Paul Evanoff	57.58%
1.20			1	Deborah Cleveland - Patricia Johnson	53.22%
0.90			2	Stephen Walker - Terry Lavender	52.27%

## Friday Evening Board-A-Match Teams

MPs	A	B	C	Names	Score
8.62	1			Paul Schwaighart - David Hankins - Sharon Miller - Dell Berg	18.00
6.47	2			Marci Knipschild - Stan Roberts - Dee Berry - Wayne English	17.50
2.58		1/2		Barney Bear - Marjorie Blunt - Jerome Kilner - Sharon Gaunt	15.50
2.58		1/2		Dennis Heller - Corneliu Galer - John Krah - Daniel Poore	15.50
1.92			1	Robert Kirk - Beau Hovda - Allen Custer - Yat Sing Ma	11.50



*Dennis Heller, John Krah, Daniel Poore, Corneliu Galer*

## Friday Evening 0-2000 Pairs

MPs	B	C	D	Names	Score
3.80	1	1		Joan Bickel - George Bickel	56.25%
2.85	2	2	1	Bill Rose - Charles Catino	56.02%
0.98			2	Roger Lowe - James Ryan	52.55%

## Friday Evening 0-200 Pairs

MPs	A	B	C	Names	Score
1.62	1	1	1	Mary Jo Eldenburg - Mary Geraghty	63.75%
1.22	2			Paul Huntress - Linda Longmire	57.90%
0.96		2		Bill Cochran - Royal Larson	51.67%
0.74			2	Paul Prochaska - Sonja Rossman	49.50%

## Saturday Afternoon 0-200 Pairs

MPs	A	B	C	Names	Score
3.19	1			Gerry Fuller - Robert Fuller	61.36%
2.74	2	1		Carolyn Wyman - Mary Blanchett	58.14%
2.06		2	1	Sandra Lindstrom - David Lindstrom	57.77%
1.54			2	William Herman - Michele Herman	56.25%

## Saturday Evening 0-200 Pairs

MPs	A	B	C	Names	Score
2.00	1	1		Patricia Dennis - Sandy Freeling	58.50%
1.50	2	2		William Herman - Michele Herman	55.21%



*Rod Caldwell, Henry Lortz*

## Saturday Open Pairs

MPs	A	X	Names	Score
25.43	1		Henry Lortz - Rod Caldwell	701.03
19.07	2		Harry Steiner - Ken Scholes	682.25
16.43		1	Xiang Tu - Yinsheng Tu	658.43
12.32		2	Glen Neidhardt - Maxine Ogino	649.60

## Saturday 0-2000 Pairs

MPs	B	C	D	Names	Score
15.65	1			Shirley Hayes - Frank Alexandro	702.86
11.74	2	1		Aaron Mohrman - Craig Ruden	685.41
6.60		2		Leeanne Creech - Bill Stewart	645.45
3.82			1	Donald Stark - Karen Hudesman	597.07
2.87			2	Yoko Reilly - Jack Yuan	591.95



*Craig Ruden, Aaron Mohrman*

# SECTIONAL RESULTS, CONT.

## Sunday Morning 0-200 Swiss

MPs	A	B	C	Names	Score
1.43	1			Paul Evanoff - Leigh Castoldi - Carroll Vaughan - Russell Vaughan	57.00
1.07	2			Carrie Margolin - Jeanine Graham - David Dailey - Charles Dailey	43.00

## Sunday Afternoon 0-200 Swiss

MPs	A	B	C	Names	Score
1.24	1			Paul Evanoff - Leigh Castoldi - Carroll Vaughan - Russell Vaughan	63.00

## Sunday 0-2000 Swiss Teams

MPs	Rank	Names	Score
7.38	1	Marla Patterson - Joseph Ulrich - Margaret Moen - Glenn Young	115.00
5.54	2	Thomas Grandine - Anne S-W Kao - Ivor Phillips - Marilyn Phillips	92.00

## Sunday 0-750 Swiss Teams

MPs	C	D	E	Names	Score
3.36	1	1	1	Valerie Lycette - Christine McKenna - Irving Sonkin - Lorenzo Migliorini	107.00
2.52	2	2		Craig Mills - Kurt Lichtenberg - Kathy Lichtenberg - Lisa Brock	106.00



Lorenzo Migliorini, Val Lycette, Christine McKenna, Irv Sonkin

## Sunday A/X Swiss Teams

MPs	A	X	Names	Score
15.25	1		Kim Eng - Jeff Ford - Dave Grubbs - Barbara Nist	99.00
11.44	2		Sun-O Ho - David Hildebrand - Ron Tracy - Craig Zastera	98.00
7.75		1	Kevin Bolan - Pat White - Mike Christensen - Michael Ring	85.00
5.81		2	Paul Schwaighart - Andrew Sherrill - Yayoi French - David Taylor	83.00



Dave Grubbs, Barbara Nist, Kim Eng, Jeff Ford

## NLM Sectional Results

### Saturday Morn 0-100 Pairs

MPs	D	E	F	Names	Score
1.45	1	1		David Lindstrom - Sandra Lindstrom	65.00%
1.09	2			Al Lunde - Carroll Vaughan	57.08%
0.90		2	1	Deborah Cleveland - Patricia Johnson	56.67%
0.65			2	Cathy Boorman - Paul Boorman	53.33%

### Non-Life Master Pairs

MPs	A	B	C	Names	Score
4.87	1	1		Yoko Reilly - Jack Yuan	65.26%
3.65	2	2		Mark McWiggins - Steven Mark Lewis	58.09%
1.53			1 2	Carol Rosenthal - Keith Rosenthal	52.53%

### Sunday Morn 0-200 Pairs

MPs	D	E	F	Names	Score
1.52	1	1	1	David Lindstrom - Sandra Lindstrom	62.92%
1.14	2	2		Joyce Doland - Dina Wells	60.42%
0.86			2	Larry White - Bruce White	57.08%

### Non-Life Master Swiss Teams

MPs	A	B	C	Names	Score
4.39	1			Craig Mills - Lisa Brock - Monty Gray - Linda Longmire	95.00
3.29	2	1	1	Carl Berkenwald - Leslie Klaff - Allen Sussman - Rodney Waldbaum	81.00
2.47		2	2	Carroll Vaughan - Russell Vaughan - Leigh Castoldi - Paul Evanoff	76.00

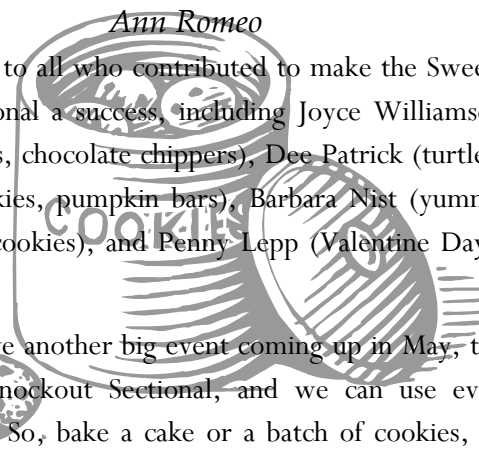
*John Weinberg noted a colorful occasion at the Sweetheart Sectional — a table where Tim White and partner Jane Green were playing a round against Monty Gray and Tom Brown.*

## Hospitality Corner

*Ann Romeo*

Thanks to all who contributed to make the Sweetheart Sectional a success, including Joyce Williamson (lemon bars, chocolate chippers), Dee Patrick (turtles, lemon cookies, pumpkin bars), Barbara Nist (yummy decorated cookies), and Penny Lepp (Valentine Day's cupcakes).

We have another big event coming up in May, the four-day Knockout Sectional, and we can use even more help. So, bake a cake or a batch of cookies, or buy a store-made treat and drop it by Hospitality. Thanks!





Director in Charge: Matt Koltnow

Seattle Bridge Unit 446

Sanction #: S1405058

Special rates for players under 26!

Just 30 minutes NE of Seattle!

# Knockout Sectional

## May 23-26, 2014 – Bothell Union Hall

<u>1:30 pm</u>	<b>Friday, May 23<sup>rd</sup></b> 0-200 Pairs (single session) Stratified Open Pairs (single session)
<u>7:30 pm</u>	0-200 Pairs (single session) Stratified Open Pairs (single session)
<u>1:00 pm</u>	<b>Saturday, May 24<sup>th</sup></b> 0-200 Pairs (single session) Stratified Open Pairs (single session) Bracketed KO (round 1 of 4)
<u>6:45 pm</u>	<b>Unit-wide membership meeting</b>
<u>7:00 pm</u>	0-200 Pairs (single session) Stratified Open Pairs (single session) Bracketed KO (round 2 of 4) Stratified Swiss Teams (single session)
<u>1:00 pm</u>	<b>Sunday, May 25<sup>th</sup></b> 0-200 Pairs (single session) Stratified Open Pairs (session 1 of 2) Bracketed KO (round 3 of 4)
<u>7:00 pm</u>	0-200 Pairs (single session) Stratified Open Pairs (session 2 of 2) Bracketed KO (round 4 of 4)
<u>10:30 am</u>	<b>Monday, May 26<sup>th</sup></b> 0-200 Swiss (single session) 0-2000 Swiss (session 1 of 2) Open Board-A-Match Teams (session 1 of 2)
<u>TBA</u>	0-200 Swiss (single session) 0-2000 Swiss (session 2 of 2) Open Board-A-Match Teams (session 2 of 2)
	<ul style="list-style-type: none"> <li>There will be a lunch break between sessions on Monday; a small surcharge will apply for lunch</li> </ul>

### Tournament Co-Chairs

David Taylor  
206-877-3532

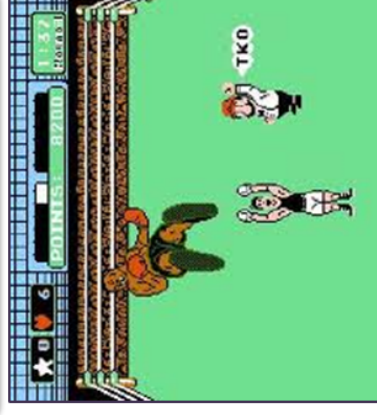
Ann Romeo  
[annromeo@gmail.com](mailto:annromeo@gmail.com)

### Partnership Chairperson

[sbu446partnership@gmail.com](mailto:sbu446partnership@gmail.com)

### Day of Tournament

Phone  
(425) 359-4499



### IUOE Local 302 (Bothell Union Hall)

18701 120<sup>th</sup> Ave NE Bothell 98011

### Directions from I-405:

From I-405, take exit 24 for NE 195<sup>th</sup> St. Head east on 195<sup>th</sup> St (this is a right turn if you're coming from the south, and a left turn from the north). Then take the second right on 120<sup>th</sup> Ave NE. The site will be on your right in less than half a mile.

### Stratification

0-200 pairs/teams 0-50, 50-100, 100-200  
0-2000 Swiss 0-50, 500-1000, 1000-2000  
Open Pairs: 0-500, 500-2000, 2000+  
Open BAM: 0-3000, 3000+

- Stratification is based on the average MPs of the pair/team
- In all limited events, no player can exceed the upper limit
- Midchart conventions permitted in top KO bracket and Monday BAM
- Knockout events will not be handicapped



# APRIL 2014

Sun	Mon	Tue	Wed	Thu	Fri	Sat
		1	2	3	4	5
		ESBC Local Charity Games (all sessions, 4/1-4/5)				
		MCBC Inter-Club Champ.				
6	7	8	9	10	11	12
	ESBC Charity Game	SBC Charity Game				ESBC Anniversary Party
	ESBC Charity Game					
13	14	15	16	17	18	19
ESBC Club Appreciation Swiss Teams (1:00)						
			SBC Club Championship Games (all sessions, 4/13-4/19)			
20	21	22	23	24	25	26
	ESBC ACBL Charity Games (all sessions, 4/21-4/26)					DMBC Special Game
		MCBC Charity Game				
27	28	29	30			

# MAY 2014

**Sun**      **Mon**      **Tue**      **Wed**      **Thu**      **Fri**      **Sat**

1      2      3

MIBC Godefroy Party

4      5      6      7      8      9      10

SBC West Coast STaC Games (all sessions, 5/5-5/11)

ESBC Club Championship Games (all sessions, 5/5-5/11)

MCBC Club Championship

11      12      13      14      15      16      17

SBC Int'l Fund Game

ESBC Swiss Teams (1:00)

ESBC Charity Game

18      19      20      21      22      23      24

SBC Unit Game

MCBC Unit Game

DMBC Special Game

ESBC Ladies' Night (7:00)

25      26      27      28      29      30      31

**KNOCKOUT SECTIONAL, cont.**

**KNOCKOUT SECTIONAL — SBC closed**

# CLUB SCHEDULES AND LOCATIONS

**Sunday**

1:00 pm Seattle Bridge Center Half price  
 6:00 pm UW Bridge Club

**Monday**

10:00 am Eastside Bridge Center  
 10:30 am Alki Bridge Club  
 Seattle Bridge Center  
 7:00 pm Eastside Bridge Center 0-2000  
 Mercer Island Bridge Club 0-500  
 Seattle Bridge Center Lessons + Play

**Tuesday**

10:00 am Eastside Bridge Center  
 Emerald Bridge Club  
 10:30 am Seattle Bridge Center  
 11:00 am Mercer Island Bridge Club  
 7:00 pm Mercercrest Bridge Club

**Wednesday**

10:00 am Eastside Bridge Center  
 10:30 am Seattle Bridge Center Half price  
 Alki Bridge Club  
 Noon Ronald Methodist Church Senior, 0-2000  
 7:00 pm Eastside Bridge Center 0-500

**Thursday**

10:00 am Eastside Bridge Center  
 Emerald Bridge Club  
 10:30 am Seattle Bridge Center Free Lunch  
 6:30 pm LeEtta King Bridge Club  
 7:00 pm Mercer Island Bridge Club  
 Eastside Bridge Center

**Friday**

10:00 am Eastside Bridge Center Open/0-100  
 10:30 am Des Moines Bridge Club  
 Seattle Bridge Center  
 6:30 pm Vashon Bridge Club *(except first Fridays; time varies, call first)*  
 7:30 pm Seattle Bridge Center

**Saturday**

9:00 am Seattle Bridge Center Lessons + Play  
 9:30 am Eastside Bridge Center 0-20 "Fun Bridge"  
 Noon Seattle Bridge Center  
 1:00 pm Eastside Bridge Center

**All games are open unless otherwise specified.**

**Locations:**

Ronald Methodist Church  
 17839 Aurora Ave N (entrance on Linden, not Aurora)  
 Margaret Marshall, (206) 363-5484/(206) 972-1941 (cell)

LeEtta King Bridge Club  
 Central Area Senior Center, 500 30th Ave S  
 (206) 226-9732

Vashon Bridge Club  
 Location varies, call for details  
 James Dam, (206) 567-5279/[eadnjd@comcast.net](mailto:eadnjd@comcast.net)

See "Club News" starting on p. 2 for other club information.



*Julie and Ole Godefroy are celebrating their 50th wedding anniversary!*

**Seattle Unit ACBL**  
**Membership: Kim Eng**  
**680 Mt. Logan Drive SW**  
**Issaquah, WA 98027**

## TOURNAMENT TRAIL

Check out [www.acbl.org](http://www.acbl.org) for most current information

<b>April</b>	<b>3-5</b>	<b>Yakima Sectional</b>
	<b>5-6</b>	<b>GNT District Finals, Flights A/C</b>
	<b>7-13</b>	<b>BURNABY (Vancouver), BC REGIONAL</b>
	<b>19-20</b>	<b>GNT District Finals, Open/Flight B</b>
	<b>25-27</b>	<b>Fircrest (Tacoma) Sectional</b>
<b>May</b>	<b>1-4</b>	<b>Richland Sectional</b>
	<b>23-26</b>	<b>Bothell Sectional</b>
	<b>30-June 1</b>	<b>Burnaby, BC Sectional</b>



### Seattle Unit Newsletter

- Published every other month, in February, April, June, August, October, and December.
- We welcome contributions from unit members. E-mail any recent bridge accomplishments, milestones, rants, raves, corrections, or other articles to [seattlebridge@hotmail.com](mailto:seattlebridge@hotmail.com). The deadline for submissions is the 10th of each odd-numbered month. All submissions may be edited for length and content.

The newsletter is edited by David Wright.

### SUN Delivery

The SUN is delivered to all unit members who provide an e-mail address or ask for it to be sent by mail. Let us know if you want to get a paper copy of the newsletter.