

# PELCOR

*The genuine cork skin*

SPRING | SUMMER 2015





---

## SPRING | SUMMER 2015

---

For Spring / Summer 2015, Pelcor presents a fresh, trendy and sophisticated collection. Inspired by the unique moments of the hot season, the collection offers a selection of cork skin handbags in a vibrant yet elegant selection of colors. This ecological and extravagant material is combined with premium materials and translated into simple shapes and 3D surfaces. This season also includes a range of pieces that use vegan faux leather.

The **CLASSICS | Contemporary handbags** group includes timeless and cosmopolitan pieces in depurated shapes with unexpected details, such as perforated cork and hand stitching details, that reflect Pelcor's vision for the season in the following colors: cork, the classic natural cork color; deep blue, an elegant and timeless blue shade; peony, a new and vibrant pink; and sunset, Pelcor's iconic orange shade. The bestselling croco texture has grown into the **SPECIALS | Unique Cork** group, now in two modern and clean versions: in plain vibrant peony and in natural cork with silver print. In a variety of clutches, this line translates the brand's new vision of a more trendy and fresh luxury.

**TRICOLOR | Premium Mixtures** is an urban story of contrasts, in unexpected yet sophisticated color combinations: the contrast between the cork skin and the natural canvas are the key of this capsule. With contrast leather details, the handbags reflect a classic and timeless vision – natural cork with navy leather – and a brighter and edgier option, which combines peony cork with coral leather.

The **WEAVE | Exclusive & Craft** line is a tribute to tradition and craftsmanship, combining weaved cork skin with vegan faux leather. After the success of the weave in natural cork, Pelcor brings a fresh vision to this fine texture in two new colors: the elegant combination of cork and deep blue, and the vibrant mixture of cork, sunset and peony.

The **RESORT | Colorful Bags** line rounds up the collection, combining cork skin with multicolor striped canvas. The rope straps give them a crafty and relaxed look, making them the perfect option to a bright and cheerful summer.

## TIMELESS | Contemporary Handbags



CLS-08

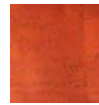
### IPANEMA TOTE

Horizontal shoulder bag with a cosmopolitan and sophisticated design in cork skin. With leather details, this accessory is ideal for your daily needs. The shoulder straps have a crafty and extravagant hand stitching detail. Closes with internal zipped panel and it has internal zipped and pouch pockets, for better storage.

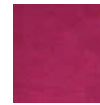
length 14.4" x width 4.1" x height 11"



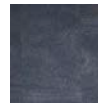
CORK



SUNSET



PEONY



DEEP  
BLUE

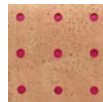


CLS-09

### MARBELLA TOTE

Shoulder bag in perforated cork skin and contrast lining. With a modern and fun design, it's unexpected and distinct, yet still versatile, with comfortable shoulder straps and leather details. Closes with internal zipped panel and it includes internal zipped and pouch pockets, for better storage.

length 14.4" x width 4.1" x height 11.4"



CONTRAST  
CORK



CONTRAST  
DEEP BLUE



CLS-10

### BALI BACKPACK

Urban backpack in cork skin and leather details, is a cool and trendy accessory. With a top handle, flap and closure with straps, it's very practical and secure. 1 exterior zipper pocket and 1 interior pocket, for better storage.

length 9.4" x width 5.3" x height 12.6"



CORK



SUNSET



PEONY



DEEP  
BLUE

### ST TROPEZ SATCHEL

Delicate satchel in engraved cork skin with croco pattern. With a trendy design and precious details, it includes a leather and chain shoulder strap. Flap with an elegant metal piece opening and internal pouch pocket, for better storage.

length 7.9" x width 3.1" x height 6.3"



CRC-01



CROCO  
SILVER



CROCO  
PEONY

### ST TROPEZ CLUTCH

Elegant bag in engraved cork skin with croco pattern. With a clean design and precious details, it has a shoulder strap that combines chain and cork. Opening with metal zipper and one interior pocket for better storage.

10.4" x 7.9"



CRC-02



CROCO  
SILVER



CROCO  
PEONY

### ST TROPEZ TALL CLUTCH

Elegant clutch in engraved cork skin with croco pattern. With a premium design and precious details, it's the perfect choice for a special night. With a delicate optional chain strap, magnet fastening and one interior pocket for better storage.

11" x 4.7"



CRC-03



CROCO  
SILVER

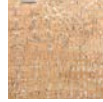


CROCO  
PEONY

## ST TROPEZ WRIST CLUTCH

Small clutch in engraved cork skin with croco pattern. With a delicate and clean design and precious details, it's the perfect choice for a special night. With a practical wrist strap, opening with zipper and one small interior pocket.

8.3" x 5.5"



CROCO  
SILVER



CROCO  
PEONY

CRC-04



## RIVIERA HANDBAG

Cork skin handbag with two top handles. With side panels in raw canvas and details in contrasting leather, this unexpected mixture of premium materials gives it a trendy, cosmopolitan and distinct look, stating a difference. Two way zip fastening and internal zipped and pouch pockets, for better storage.

length 11.8" x width 6.3" x height 7.9"



TRI-01



TRI  
CORK

TRI  
PEONY

## RIVIERA SACHEL

Small and practical cork skin satchel with flap panel in raw canvas and details in contrasting leather. This unexpected mixture of premium materials gives it a trendy and distinct look, stating a difference. With leather and chain strap and flap with an elegant metal piece opening. Internal pouch pocket, for better storage.

length 7.9" x width 3.1" x height 6.3"



TRI-02



TRI  
CORK

TRI  
PEONY

## RIVIERA ENVELOPE CLUTCH

Small cork skin envelope clutch, with flap panel in raw canvas and details in contrasting leather. This unexpected mixture of premium materials gives it a trendy and distinct look, stating a difference. With a delicate leather and chain strap and a practical magnet snap-fastening, it has 1 interior pouch pocket for better storage.

9.4" x 6.3"



TRI-03



TRI  
CORK

TRI  
PEONY

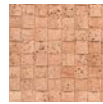


WSP-04

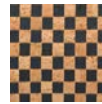
### CAPRI WEAVE SHOPPER

Vertical shopper with a unique and extravagant texture - weaved cork skin. This roomy bag has details in vegan leather and a trendy and contemporary design, with a crafty touch. Magnet fastening and a practical internal removable pouch, for better storage.

length 9.4" x width 4.7" x height 13.8"



WEAVE  
CORK



WEAVE  
BICOLOR



WEAVE  
TRICOLOR

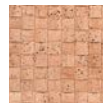


WSP-05

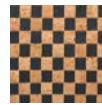
### CAPRI WEAVE TOTE

Tote with a unique and extravagant texture - weaved cork skin. This roomy bag has details in vegan leather and a trendy and contemporary design, with a crafty touch. Magnet fastening and a practical internal removable pouch, for better storage.

length 13.8" x width 4.3" x height 11"



WEAVE  
CORK



WEAVE  
BICOLOR



WEAVE  
TRICOLOR

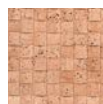


WSP-06

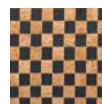
### CAPRI WEAVE CLUTCH

Small clutch with a unique and extravagant texture - weaved cork skin. With a clean trendy design and a crafty touch, this accessory has vegan leather details. With a practical removable cross-body chain, it closes with magnet and has 1 interior pocket for better storage.

10.4" x 7.9"



WEAVE  
CORK



WEAVE  
BICOLOR



WEAVE  
TRICOLOR





## RESORT | Colorful Bags



SUN-03

### MALIBU SHOPPER

Leather-free shopper that combines cork skin with multicolor striped canvas. Bright and cheerful, with a trendy and easy-to-wear design, it is perfect to take to the beach or walks in the sun. The rope shoulder straps give it a crafty and fresh look. Magnet fastening and one interior pouch for better storage.

length 11.8" x width 4.3" x height 15"



STRIPE  
CORK



STRIPE  
DEEP BLUE



SUN-04

### MALIBU TOTE

Leather-free tote that combines cork skin with multicolor striped canvas. Bright and cheerful, with a trendy and easy-to-wear design, it is perfect to take to the beach or walks in the sun. The rope shoulder straps give it a crafty and fresh look. Magnet fastening and one interior pouch for better storage.

length 13.8" x width 4.3" x height 11"



STRIPE  
CORK



STRIPE  
DEEP BLUE

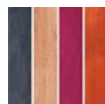


SUN-05

### MALIBU STRIPED CLUTCH

Small and practical leather-free clutch in raw canvas, with multicolor cork skin in striped pattern. Colorful, fun and with a clean and trendy design, states a difference. With delicate cross-body chain and zip fastening.

10.4" x 7.9"



MULTI  
CORK



**TIMELESS | Contemporary Handbags**



CLS-08



CLS-09



CLS-10

**SPECIALS | Unique Cork**



CRC-01



CRC-02



CRC-03



CRC-04

## TRICOLOR | Premium Mixtures



TRI-01



TRI-02



TRI-03

## WEAVE | Exclusive & Craft



WSP-04



WSP-05



WSP-06

## RESORT | Colorful Bags



SUN-03



SUN-04



SUN-05



## COLOR CARD



**SALES REPRESENTATIVES USA - LOS ANGELES**  
**MISS ADORY SHOWROOM | WWW.MISSADORY.COM**  
 pelcor@missadory.com | (310) 903-7000  
 Cooper Design Space | 860 South Los Angeles Street, Suite 529  
 Los Angeles, California 90014

**More informations to USA Press:**  
 SHARA SEIGEL | sseigel@mg-pr.com



[WWW.PELCORUSA.COM](http://WWW.PELCORUSA.COM)