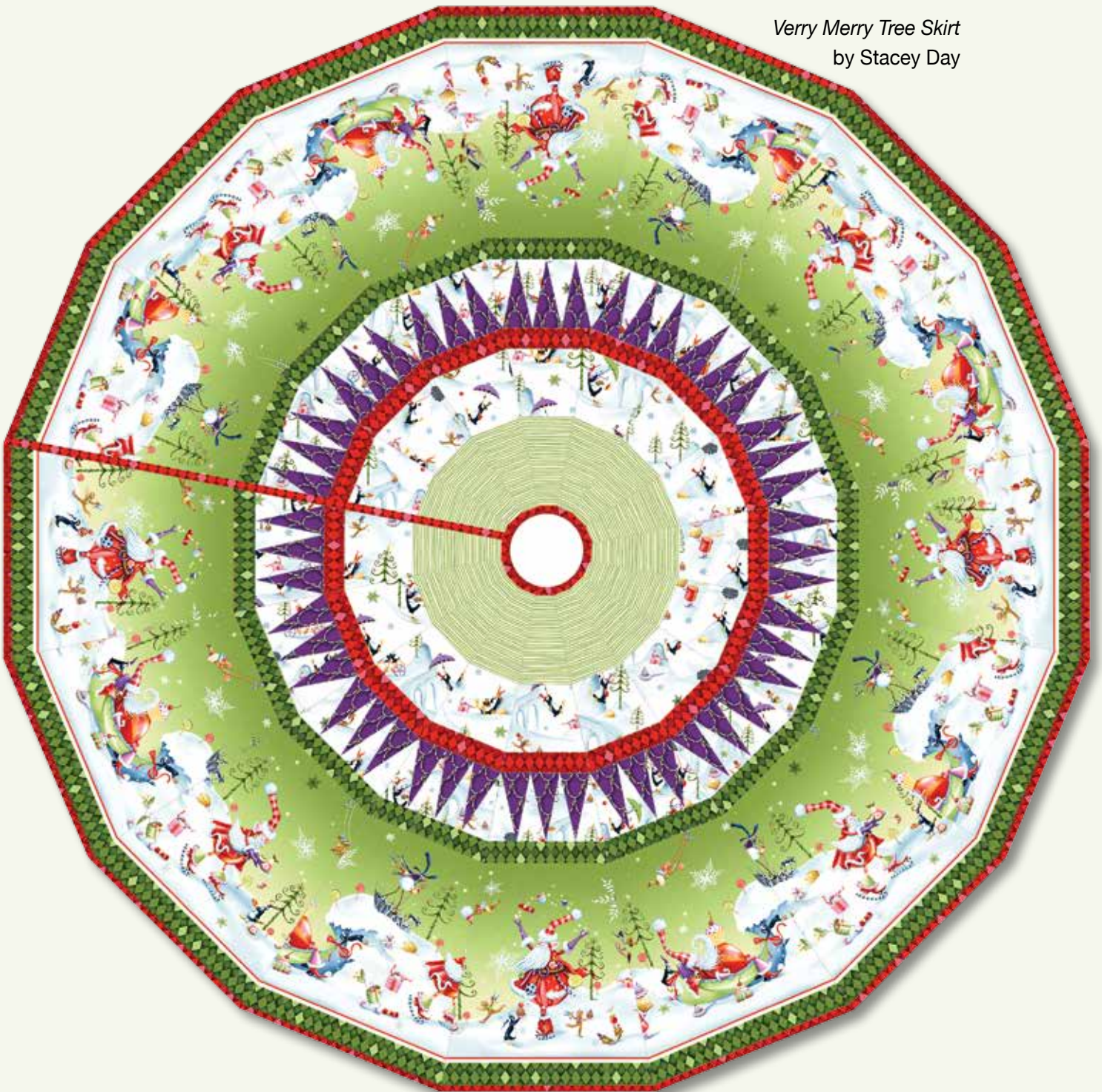


More Merriment

Verry Merry Tree Skirt
by Stacey Day



More Merriment

Very Merry Tree Skirt by Stacey Day
featuring the *More Merriment* collection
by Paper D'Art for P&B Textiles

Quilt Size: 48" diameter

Yardage

Fabric A	MMN2 421 W	2/3 yard
Fabric B	MMN2 422 G	1 1/2 yards
Fabric C	MMN2 425 G	1/4 yard
Fabric D	MMN2 425 R	3/4 yard
Fabric E	MMN2 426 C	1/2 yard
Fabric F	MMN2 427 WG	1/3 yard
Backing	any MMN2 fabric	2 1/2 yards

Cutting

All strips are cut across the width of the fabric. Refer to the finished diagram for fussy cutting the border print.

From Fabric A (MMN2 421 W), cut:

- (4) 4" x 42" strips; cut into (64) 2" x 4" rectangles
- (16) pieces from Template B

From Fabric B (MMN2 422 G), cut:

- (16) pieces from Template A, fussy cut so the top of the template is aligned with the red stripe on the top of the border print, so that a Snowman or Santa motif is centered in the piece. Make 4 of each Santa (Juggling, Bathtub and Skating) and 2 of each Snowman (Snowflake and Umbrella).

From Fabric C (MMN2 425 G), cut:

- (3) 1 3/4" x 42" strips; cut into (16) 1 3/4" x 6 1/4" rectangles

From Fabric D (MMN2 425 R), cut:

- (2) 1 3/4" x 42" strips; cut into (16) 1 3/4" x 4 3/4" rectangles
- Cut remaining yardage into 2 1/4" bias strips, 250" total

From Fabric E (MMN2 426 C), cut:

- (3) 4" x 42" strips; cut into (48) 2" x 4" rectangles

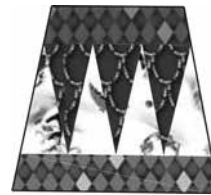
From Fabric F (MMN2 427 WG), cut:

- (16) pieces from Template C, fussy cut so that the stripe is parallel with the top and bottom of the template

Wedge Assembly

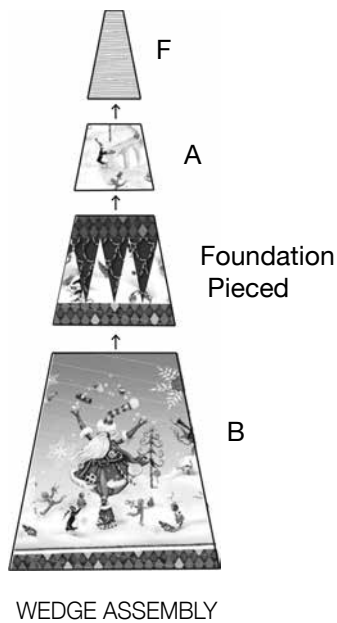
Refer to the template for fabric order and placement. All seams are sewn Right Sides Together with a 1/4" seam allowance. For a foundation piecing tutorial visit <http://staceyinstitches.wordpress.com> and click on the Foundation Piecing Tutorial.

1. Make 16 copies of the Foundation Pattern and cut from the paper, leaving 1/8" of paper around the seam allowance of the printed pieces.
2. Using the Fabric A and Fabric E 2" x 4" rectangles, piece the inner sawtooth using a preferred method of foundation piecing and paying careful attention to the fabric order on the foundations.
3. Sew the Fabric C rectangles to the bottom of the inner sawtooth, and then sew the Fabric D rectangles to the top of the inner sawtooth using a preferred method of foundation piecing.
4. Press the finished foundation pieces well, trim the extra paper and fabric from around the piece, and then remove the papers from each foundation.



FINISHED FOUNDATION PIECE

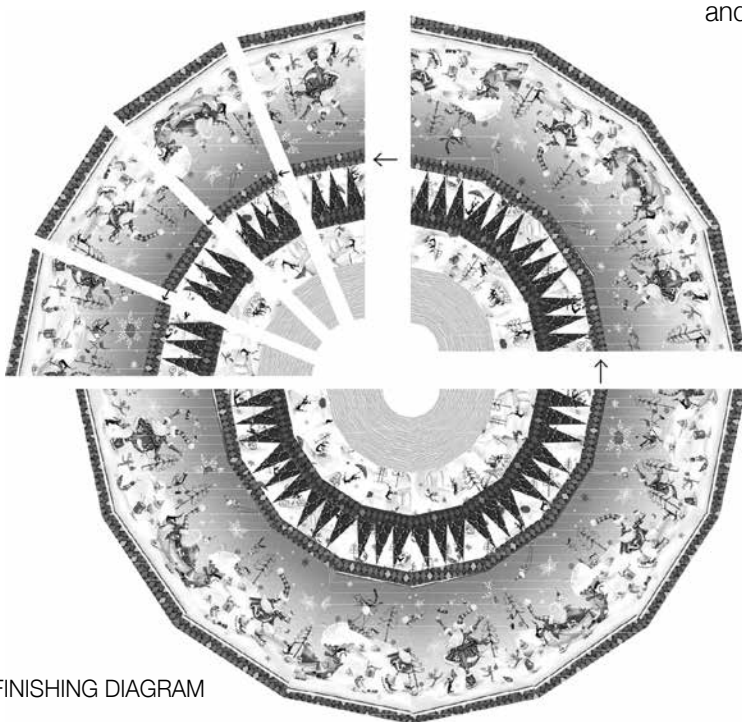
5. Referring to the Wedge Assembly construction diagram sew the Fabric B pieces, foundation pieces, Fabric A pieces, and Fabric F pieces together to make (16) wedges. Press half the wedges towards the bottom (Juggling Santa and Skating Santa wedges) and the other half towards the top (Bathtub, Santa and Snowmen wedges).



6. Sew the wedges together into four groups of (4) wedges, matching seams carefully, with one of each Santa motif and a Snowman in each group, in the same order: Juggling, Bathtub, Skating, Snowman. Press towards the left.

7. Sew the wedge groups into a pair of half circles so that there is one of each Snowman motif in each half. Continue pressing towards the left.

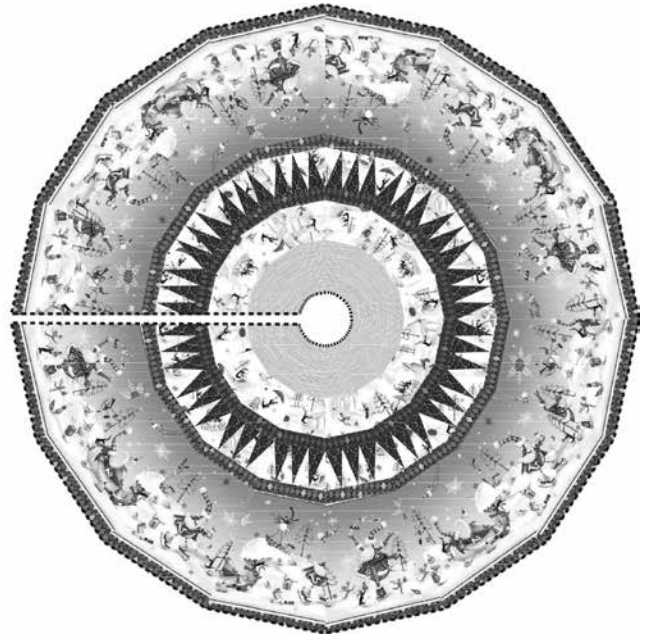
8. Sew the two halves together on a single side only, leaving the other side as the opening split. Trim the 1/4" seam allowance from the opening split. Press the tree skirt well.



Tree Skirt Assembly

9. Layer the tree skirt top with the batting and backing; baste. Quilt as desired.

10. Cut the batting and backing from around all edges of the tree skirt, including the opening split.



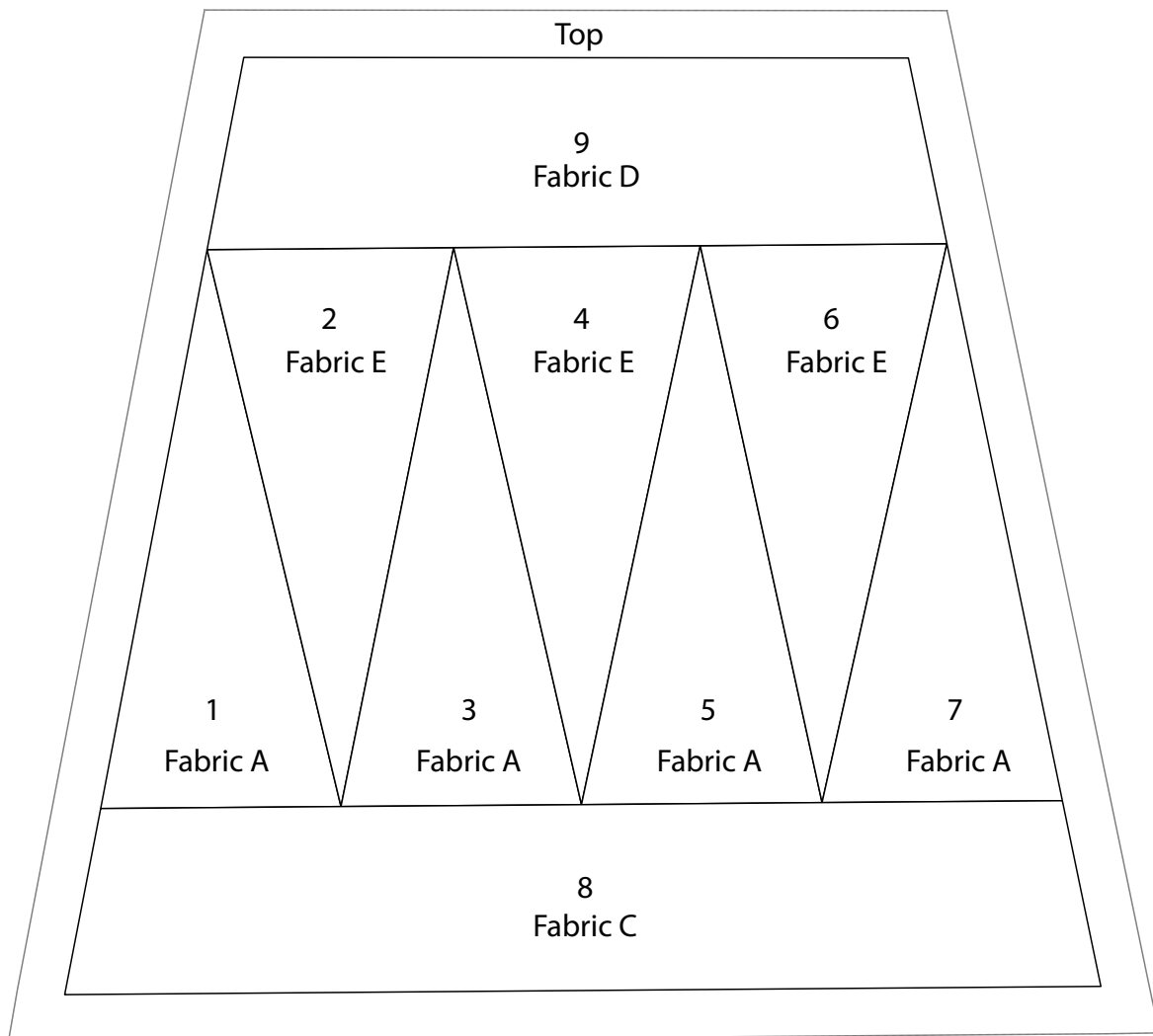
11. Using the Fabric D 2 1/4"-wide bias binding strips, sew around the entire outer perimeter, up one opening split side to the center, around the center, then back down the other opening split side to the outer perimeter, so the entire tree skirt is bound in a single piece. Label and enjoy!

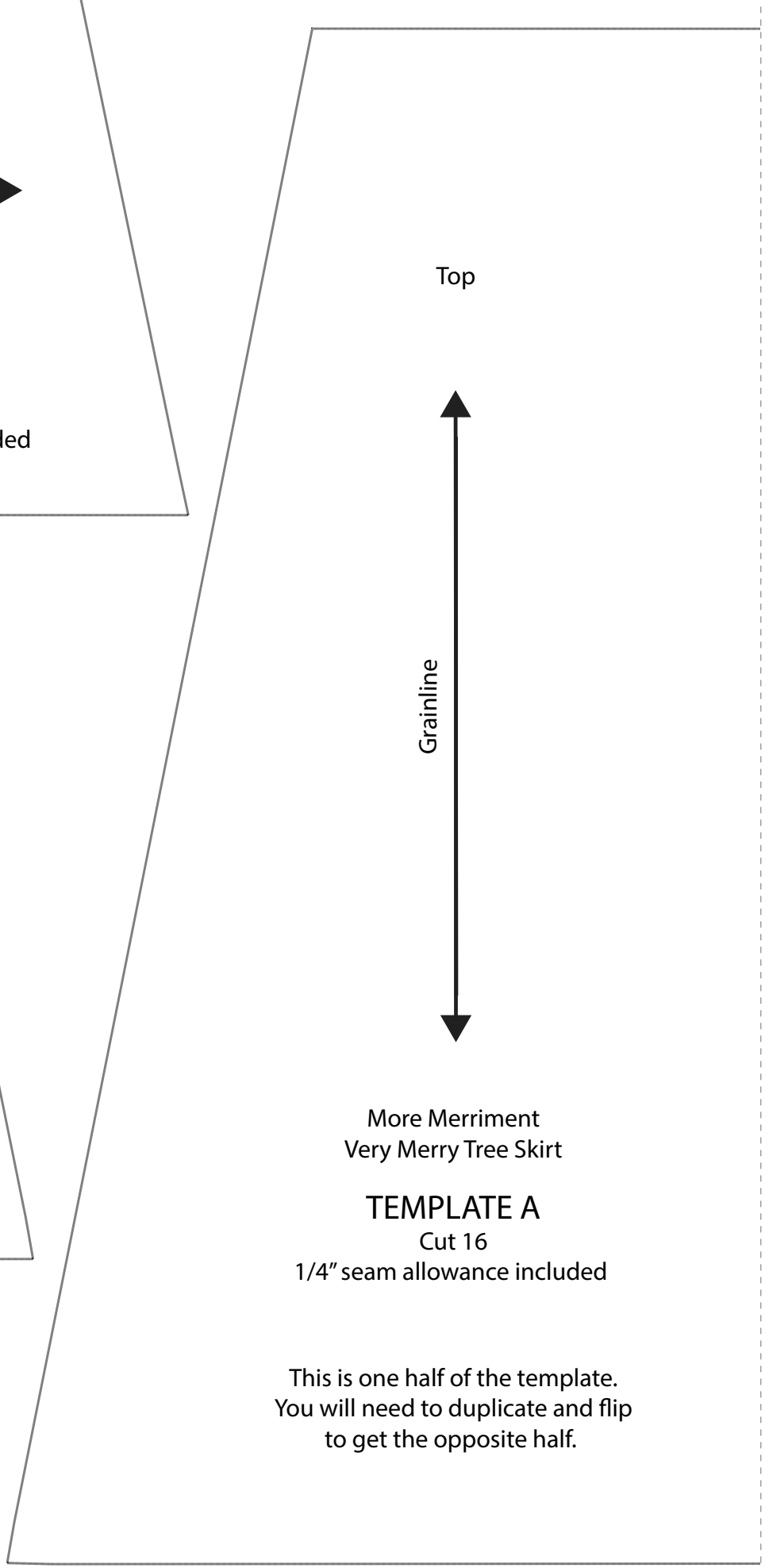
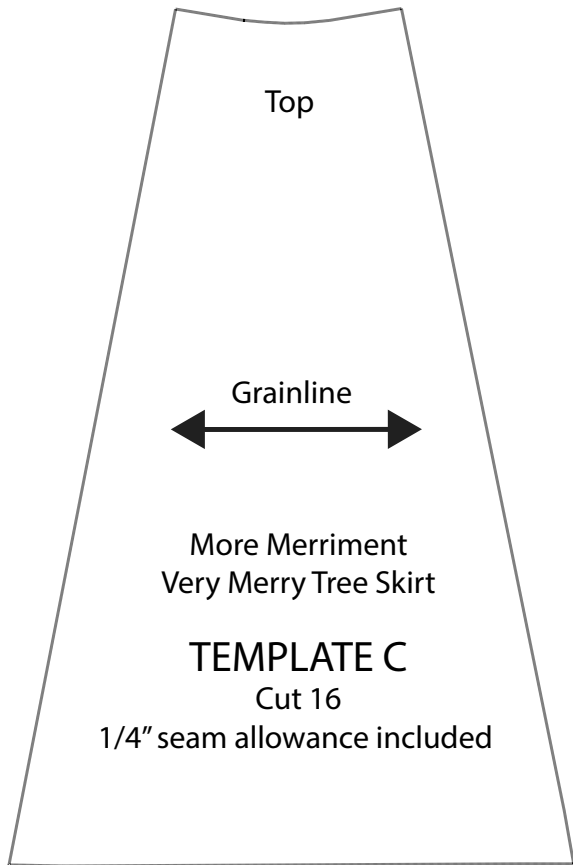
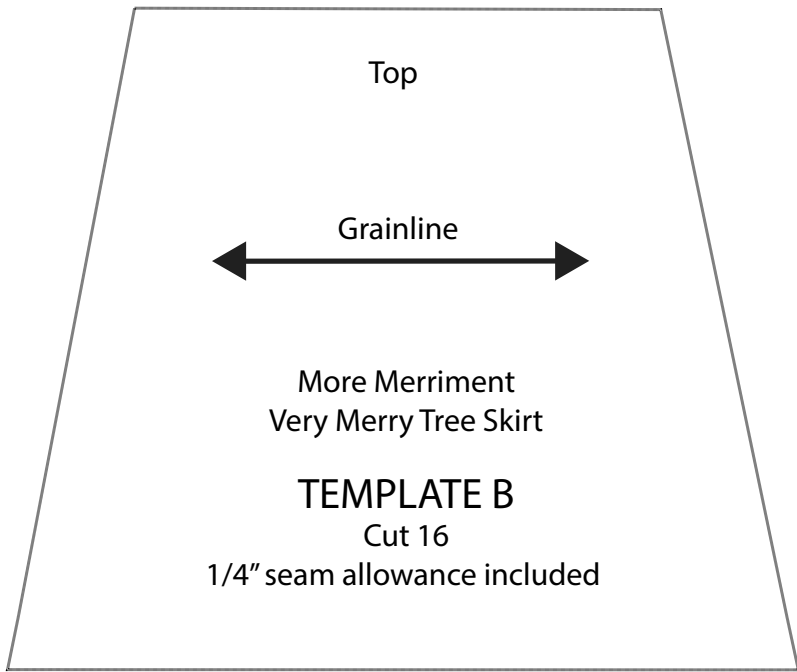
More Merriment

Very Merry Tree Skirt Templates

More Merriment
Very Merry Tree Skirt

FOUNDATION PATTERN
Make 16
1/4" seam allowance included



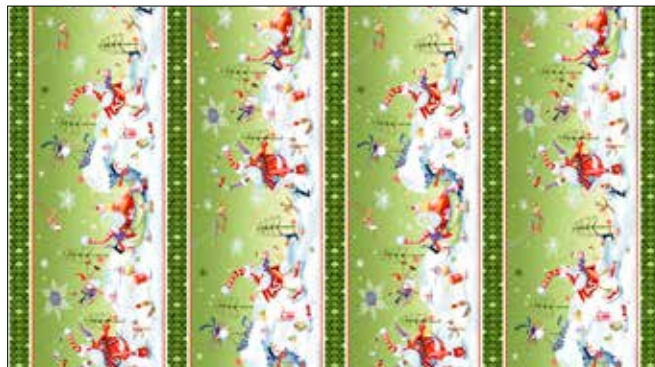


More Merriment

Fabric Collection by Paper D'Art



MMN2 420 G – shown selvage to selvage – 24" repeat



MMN2 422 G – shown selvage to selvage – 9" stripe



MMN2 421 W



MMN2 423 G



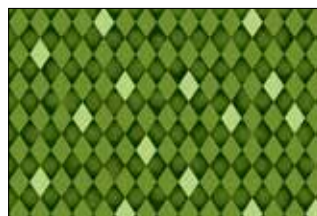
MMN2 423 R



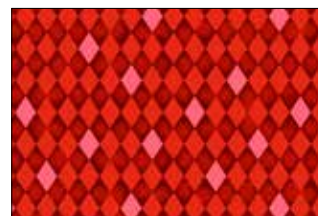
MMN2 424 G



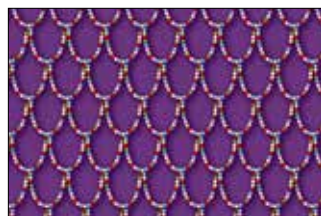
MMN2 424 R



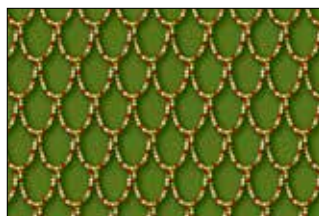
MMN2 425 G



MMN2 425 R



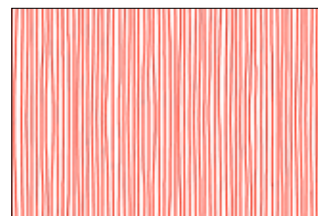
MMN2 426 C



MMN2 426 G



MMN2 427 WG



MMN2 427 WR



P&B Textiles ♦ www.pbtex.com ♦ 800-351-9087

45-47 Washington St., Pawtucket, RI 02860 ♦ 253 W. 35th St., 11th floor, New York, NY 10001

▲ 100% cotton ♦ Cold wash & dry ♦ 43" / 44" ♦ Colors may vary due to printing process

All fabrics shown at 25% scale except where indicated otherwise.