



Rivers Casino
Pittsburgh, PA
Architect: Strada Architecture, LLC and
Bergman, Walls & Associates, Ltd.



Newport Lofts
Las Vegas, NV
Architect: WPH Architecture, Inc.



Seattle Seahawks Stadium
Seattle, WA
Architect: Ellerbe Becket



EcoScreen®

**PERFORATED
SCREENWALLS**

Front and Back Covers, Third page - second photo:
Charlotte Douglas International Airport Parking Decks
Charlotte, NC
Architect: LS3P/The Wilson Group



CENTRIA

www.CENTRIA.com

1005 Beaver Grade Road, Moon Township, PA 15108-2944
412-299-8000; Fax: 412-299-8317
800.759.7474

Imagine the Possibilities...



CENTRIA

Description

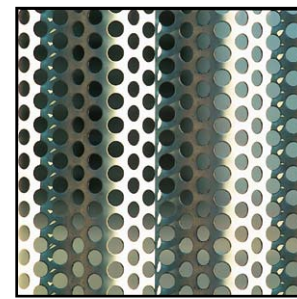
Achieve exciting, fresh new designs by incorporating CENTRIA EcoScreen Perforated Screenwalls into your next project. EcoScreen Perforated Screenwalls are made by punching millions of tiny holes across quality CENTRIA Profile Series panels. Especially excellent for open structures requiring ventilation or fall protection, EcoScreen Perforated Screenwalls also mask building equipment and control light pollution.

Available Profiles

- Econolap 3/4"
- BR5-36
- Style-Rib
- MR3-36
- CS-260
- CS-660

Material Options

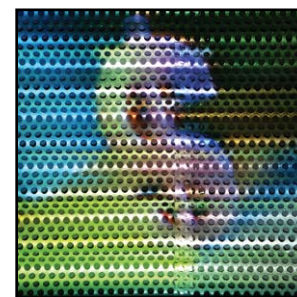
- 20 gage stainless steel
- 0.040" painted aluminum



Perforated 40%



Integration



Projected Imaging

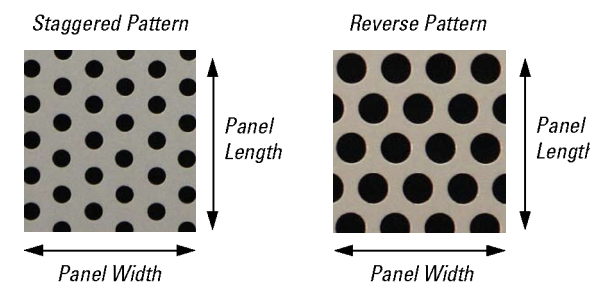


Inside View

Double Tree Hotel
Arlington Heights, IL
Architect: Fitzgerald
Associates Architects

Perforation Pattern Options

Choose from two perforation patterns.



Open/Free Area (%)	Pattern	Diameter (in)	Spacing (in)
10	Reverse	1/8	3/8
23	Staggered	1/8	1/4
23	Reverse	1/4	1/2
30	Staggered	1/8	7/32
33	Staggered	3/16	5/16
40	Staggered	1/8	3/16
40	Staggered	3/8	9/16

Bold lines are Standard
For additional patterns contact CENTRIA

Features

- Control light
- Provide ventilation and security
- Achieve free area from 10% to 40%
- Choose from a distinct selection of profile panels
- Available in stainless steel or aluminum

Free Area Options

Achieve a percentage of open area by specifying hole diameter and spacing.

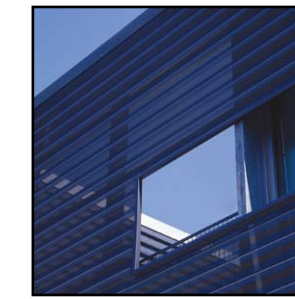
An environmentally responsible design decision

CENTRIA EcoScreen Perforated Screenwalls, made from stainless steel or aluminum, contain a high percentage of recycled content and are themselves recyclable. The material is lightweight, requiring limited structural material usage. In many applications, EcoScreen Perforated Screenwalls provide other environmental benefits including the reduction or elimination of artificial lighting, fresh air ventilation, and reduced light pollution. EcoScreen, made with stainless steel and 100% renewable energy, earned the first ever Cradle-To-Cradle Gold Certification for exterior building products.



Top Photo: Verizon Wireless
Robinson Twp., PA
Architect: Edge Studio

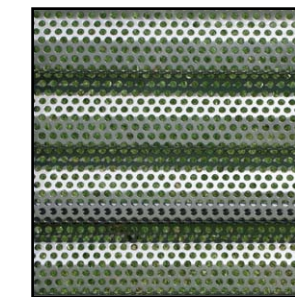
Bottom Photo: University of Pennsylvania Chiller Plant
Philadelphia, PA
Architect: Leers Weinzapfel Associates



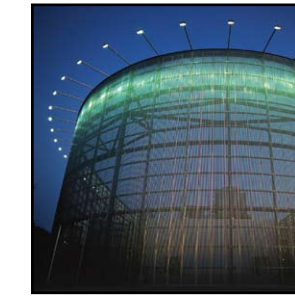
Color Options



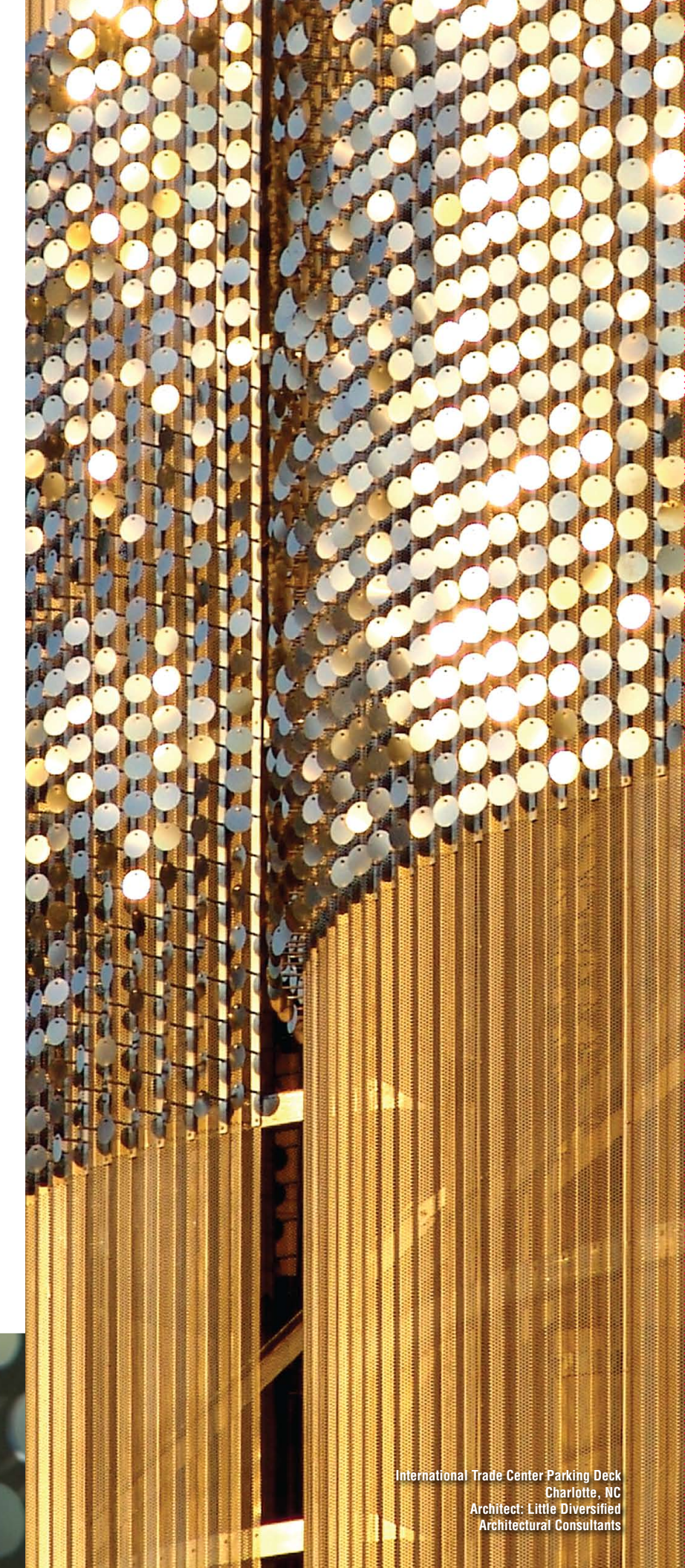
Soft Curves



Profile Options



Exterior Lighting



International Trade Center Parking Deck
Charlotte, NC
Architect: Little Diversified
Architectural Consultants

