

before



best white

Cotton Balls OC-122
CABINETRY PAINT,
Benjamin Moore,
benjaminmoore.ca.

TEXT BETHANY LYTTLE | PHOTOGRAPHY DONNA GRIFFITH | STYLING ANN MARIE FAVOT

GATHER around

Equipped with function and style, this casual kitchen was made to be used by its owners – a couple that loves to cook and entertain.

Twelve years have passed since Gail Dignam, her husband, Michael, and their three daughters made this Tudor-style stone house their home. They've always loved the heritage of the century-old house, but the 1980s addition? Not so much. Cramped and dark, it served as a dysfunctional kitchen with a tiny island, an insufficient cooktop and no room for guests. The family made the best of it, but for Gail, an avid cook and entertainer, it was a constant source of frustration.

Then along came Carol Reed. Looking beyond the kitchen's poor layout, the Toronto-based interior designer noted the two-storey addition's vertical potential. "It had a catwalk that blocked the light and a pantry that made the kitchen's footprint smaller," she says. So, beginning with the removal of these structural details, she embarked on a nine-month transformation. The outcome? An East-Coast-meets-farmhouse-style kitchen filled with light and all the modern amenities.

LESSON 1

Use a Lazy Susan to hold a collection of oft-used culinary essentials, such as oils, vinegars and spices. Choose attractive bottles and dishes to double as a chef-inspired display when they're not in use.

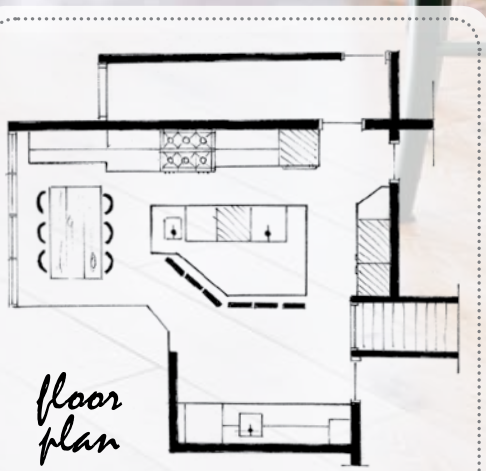


LESSON 2

To keep a white kitchen feeling cozy, not cold, layer in dark-coloured countertops and hardware, light woods, aged-looking metal accents and soft colour, such as the watery blues used in this room.

LESSON 3

If you have the space, use multiple seating areas to accommodate different types of gatherings. Here, a long harvest-style table is perfect for sit-down meals, while the island is better suited for casual cocktails and afternoon snacks.



FLOOR PLAN, EMILIE DESROCHERS

LESSON 4

Usher in an antique to make a new kitchen look old. Designer Carol Reed kept homeowner Gail Dignam's well-worn monk's table in the kitchen. Surrounded by dark brown country-style chairs, the table serves as a focal point in the farmhouse-inspired room.

- Warm white cabinetry with plenty of open shelving.
- Black hardware.
- Aged-looking metal fixtures, such as nickel and brass.
- Wide-plank wooden floors.
- Harvest-style dining table and simple country chairs.
- Wooden utensils, wicker baskets and chunky white dishes.

Get the look
FRESH FARMHOUSE

LESSON 5

They may seem like extras you don't need, but convenient accessories like a pot filler, wine fridge and prep sink dramatically improve cooking and entertaining ease. Maximize space by installing an under-counter microwave drawer.

LESSON 6

Opt for low-maintenance surfaces. Quartz countertops, as opposed to marble, are easier to care for – bonus if you choose a darker colour, such as black, which is better at hiding stains and imperfections.

LESSON 7

If you want floors that look reclaimed but are actually new, consider a light tone in character-grade oak. Its knots and imperfections won't show wear as much as "clear" wood, making it ideal for high-traffic areas – and it'll look like it's been there for years.

LESSON 8

Accessorize with the things you love. Carol did this for Gail by creating a bulletin board from her wine cork collection. And knowing Gail's love of all things beachy, Carol included touches of seaside colour, such as the watery blue-green hue of the bar stools.



Homeowner Gail Dignam sits at the office nook, which showcases the DIY wine cork bulletin board.



LESSON 9

Just because it's practical doesn't mean a pantry has to be drab. Silver serveware, a fancy faucet and fresh flowers make this one as attractive as it is utilitarian. Beadboard panelling was added for a farmhouse-style backdrop.

LESSON 10

Update basic white cabinetry with attractive millwork to lend it a high-end, custom look. Use elements like corbels, toe-kick corner blocks, crown moulding and baseboards. The result? Cabinets with the feeling of always-been-there furniture.

DESIGN, Carol Reed Interior Design, carolreeddesign.com; **CONTRACTING**, custom **MILLWORK**, Henriksen Construction; **Crème Brulee 2022-70 WALL PAINT**, Benjamin Moore; **Akurus/Lidingö CABINETRY**, IKEA; **CABINETRY HARDWARE**, Richelieu Hardware; **BACKSPLASH TILES**, Salsito Imports; custom copper **RANGE HOOD COVER**, Carol Reed Interior Design; **BAR STOOLS**, Pottery Barn; **PENDANT LIGHTS**, Concept Lighting; wooden **PASTRY BRUSH**, **MUSHROOM BRUSH**, Mjöll; white **BOWLS** (on shelf), **BASKETS**, West Elm; clay **POTS**, The Home Depot.

FOR SOURCES, SEE OUR WORKBOOK

