

Hopemont

S E R I E S
RAISED RANCH HOMES



Presented By

*Designed for you—
with living your life
in mind*


PLEASANT VALLEY HOMES
MODULAR INC.

Hopemont Raised Ranch Homes

Presented By

Pleasant Valley Modular Homes, Inc.

Standard Features

Floors [16" On-Center]:

2" x 10" Floor Joists, 16" On-Center
Double 2x10 Perimeter Joists
¾" OSB Tongue & Groove Floor Decking
No Standard Floor Insulation

Exterior Walls [16" On-Center]:

2x6 Graded Wall Studs, 16" On-Center
8' Exterior Sidewall Height
R-19 Fiberglass Insulation

Exterior:

Double Four Vinyl Siding
7/16" OSB Sheathing Under Siding & On Marriage Walls
Tyvek Vapor/Air Barrier
Fiberglass 6-Panel Front Door
Fiberglass 2-Lite Rear Door
Exterior Light at Front and Rear Door
Vinyl Thermopane Windows with Low "E" Glass and Grills
15" Raised Panel Shutters on Front Elevation
Entry Platform and Up Stair Shipped Loose

Roof [16" On Center]:

5/12 Pitch Roof with Shingle Over Ridge Vent
30-Year Architectural Fiberglass Roof Shingles
Eaveguard Ice Shield
6" Fascia and Vented 6" Soffit
100-Pound Ground Snow Load Roof Rafters -- 16" O.C.
Smooth Finish Drywall Ceilings
R-33 Cellulose Ceiling Insulation in Standard 5/12 Roof
(Opt. R-38 As Required in Some Areas)

Heating:

No Standard Heating System

Plumbing:

No Standard Water Heater
Outside Water Faucet
Water and Drain Lines Stubbed Through the Floor
Plumb and Wire for Washer
Water Shut-offs at All Fixtures
Single Lever Delta Faucets on All Bath Fixtures
Anti-Scald Valves on Tub/Shower Units
Wire and Vent for Dryer

Electrical:

Built to the National Electric Code
200 Amp Service with 40 Spaces
Copper Wiring Throughout
Pewter Color Light Fixtures Throughout
Wired Smoke Detectors with Battery Back-Up
Two GFCI Protected Exterior Receptacles
Switched Receptacle in Living Room
Bisque Color Electrical Switches and Receptacles

Interior:

Primed, Finished Drywall Throughout, Including All Closets
8' Flat Ceilings Throughout with Finished Drywall
25 oz. Carpet Installed
5.5# Rebond Carpet Pad
Tack Strip Carpet Installation with Carpet Bars
No-Wax Vinyl Flooring
Pre-hung 32" White 6-Panel Interior Doors (Most Areas)
Lever Handles & Mortised Hinges on All Interior Doors
Floor Mount Door Stops (Most Areas)
Designer-Coordinated Window Treatments
Hanging Dining Room Chandelier
Ceiling Light Fixtures in All Bedrooms
Vinyl Clad Wardrobe Shelving in Closets and Pantries
Vinyl Foyer Entry
White Wood Moulding Profiles
White Window Sills
Railing Shipped Loose
Down Stair Built On-Site by Builder

Kitchen:

8" Deep 33" x 22" Double Bowl Stainless Steel Sink
Single Lever Delta Kitchen Faucet with Sprayer
Soffit Light Over Kitchen Sink (Most Models)
Raised-Panel Oak Cabinets with ¾" Solid Oak Face Frames
Concealed Cabinet Door Hinges
Pewter Color Door and Drawer Pulls
25" Deep Laminate Counter Tops
Ceramic Backsplash on All Counter Tops
Metal Drawer Guide System
Drawer-Over-Door Base Cabinets
Adjustable Shelving in Overhead Cabinets
Shelving in All Base Cabinets

White Kitchen Appliances:

18 Cubic Foot Two-Door Refrigerator
30" Free Standing Gas Range
30" Non-Vented Range Hood with Light

Baths:

Fixture Color is White
Vitreous China 1.6 Gallon Water Saver Elongated Toilets
36" High Oak Vanity Cabinets with Generous Storage
China Sinks with Overflow and Pop-Up Assemblies
Delta 'SBS' Bath Faucets with Anti-Scald Shower Valve
Armstrong No-Wax Vinyl Flooring
Laminate Vanity Tops
Medicine Cabinets and/or Light with Mirror
60" One-Piece Fiberglass Tub/Shower Units
36" or 54" One-Piece Fiberglass Shower Stalls in Glamour Baths
Fiberglass Soaker Tubs in Glamour Baths as Shown
Tub Drape at 60" Tub/Shower Units
Lighted Exhaust Fan in Bath

All representations and descriptions of the Pleasant Valley product are believed to be accurate at the time of publication. Due to continual product improvement and changes in design and material suppliers, we cannot guarantee pricing and exact duplication of every product mentioned herein. Model availability and specifications are subject to change without notice. Your Retailer/Builder is not an agent of Pleasant Valley Modular Homes, Inc. They, as an independent party, are responsible for your purchase contract and for any and all deletions, additions, alterations, or attachments made to or in your home.

Updated 06/2009



Index of Floor Plans

Model Name	Floor Plan	Size	Sq. Ft.	Page Number
Mount Rainier	RR2-HM-0201	27'-5" x 64'	1,755	1
Mount Whitney	RR2-HM-0202	27'-5" x 56'	1,536	1
Mount Everest	RR2-HM-0203	27'-5" x 64'	1,755	2
Mount Rushmore	RR2-HM-0204	27'-5" x 56'	1,536	2
Mount Hood	RR2-HM-0205	27'-5" x 52'	1,426	3
Mount Blanc	RR2-HM-0206	27'-5" x 48'	1,316	3
Mount Redington	RR2-HM-0207	27'-5" x 56'	1,522	4
Mount Lafayette	RR2-HM-0208	27'-5" x 60'	1,632	4

Sales Phone: (570) 345-6500

Fax: (570) 345-4440

E-Mail: sales@pvmhi.com

www.pvmhi.com

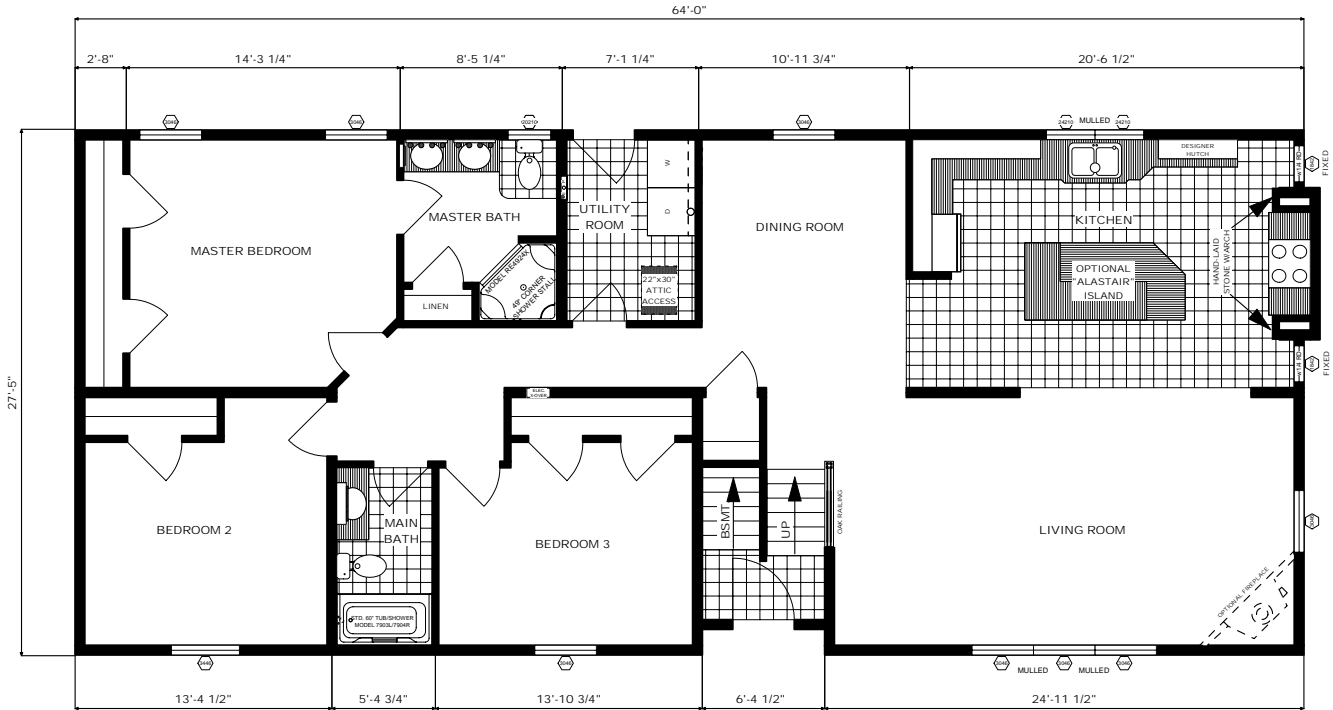
Mount Rainier

Featuring the "Stone Chimney" Kitchen

Floor Plan: RR2-HM-201

Size: 27'-5" x 64'

Sq. Ft.: Appx. 1,755

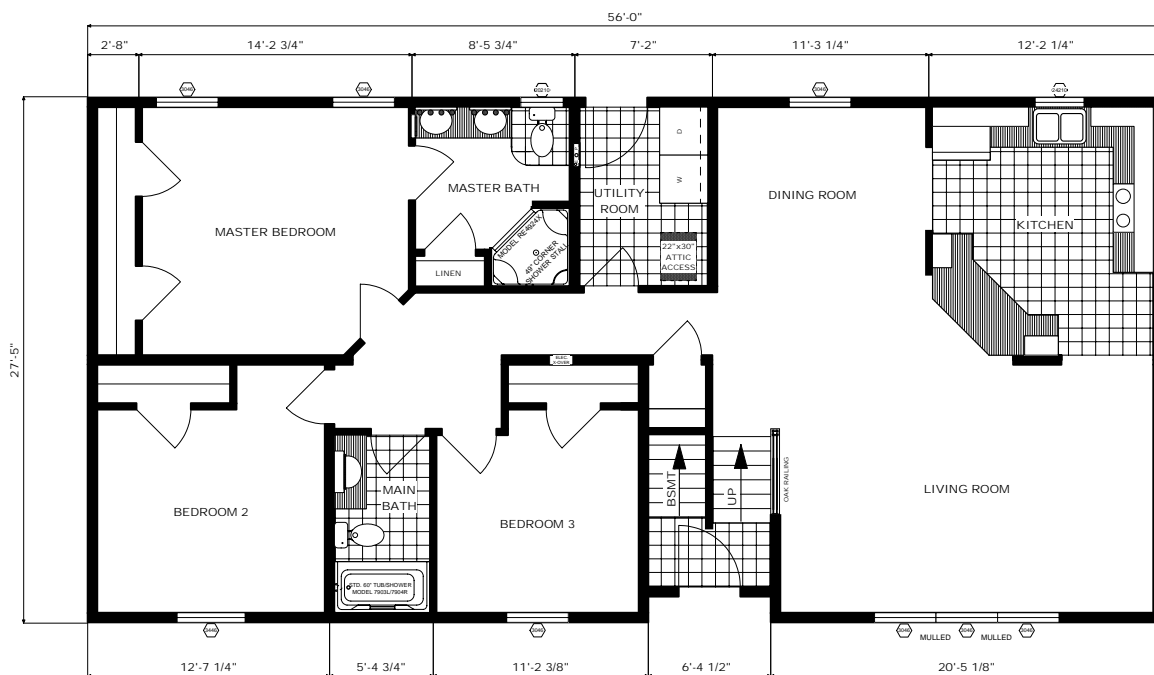


Mount Whitney

Floor Plan: RR2-HM-202

Size: 27'-5" x 56'

Sq. Ft.: Appx. 1,536



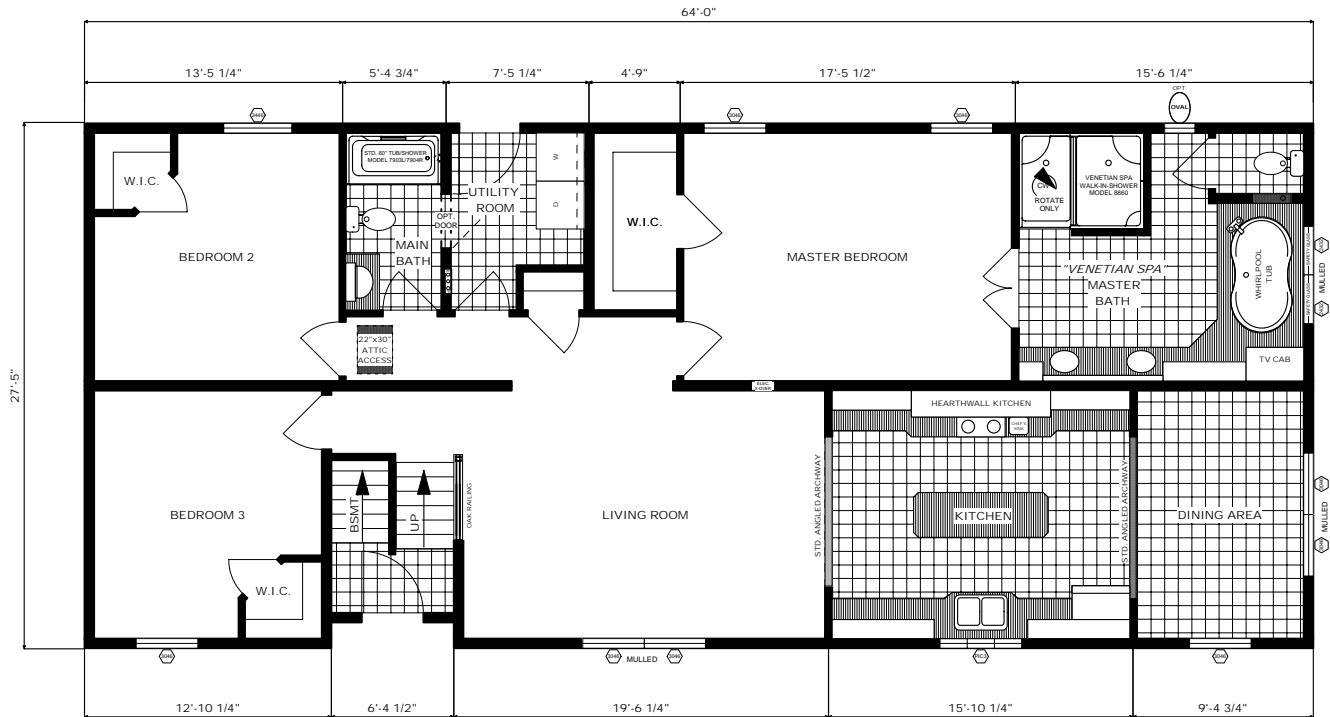
Mount Everest

Floor Plan: RR2-HM-203

Size: 27'-5" x 64'

Sq. Ft.: Appx. 1,755

Featuring the "Hearth Wall" Kitchen & "Venetian Spa" Master Bath

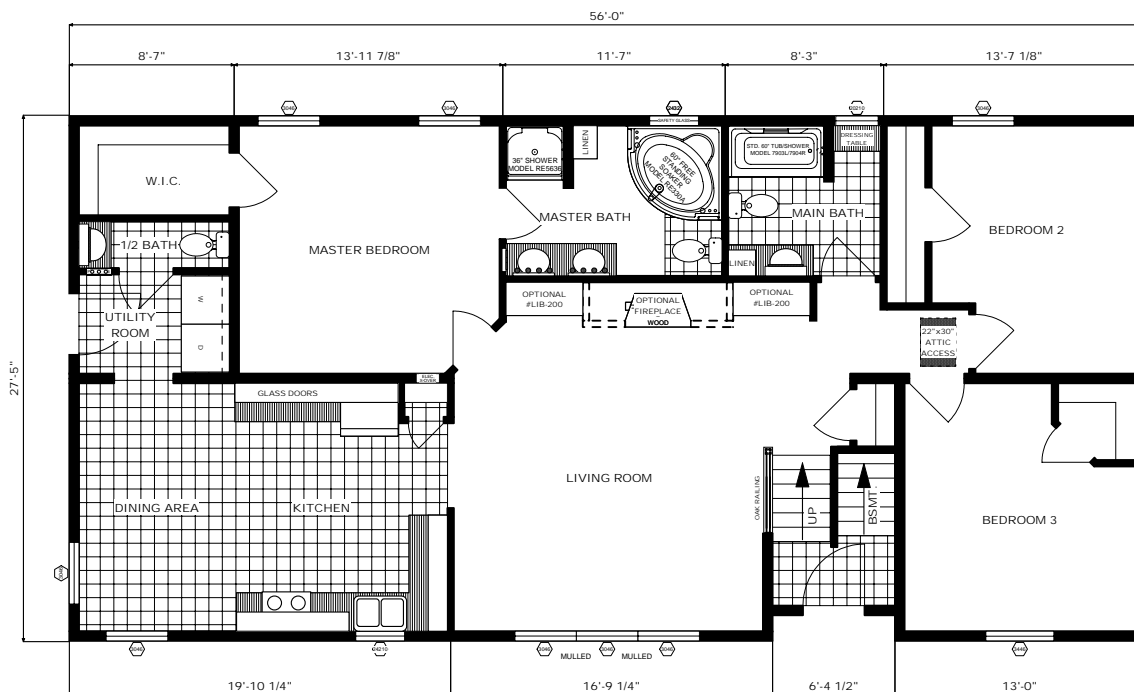


Mount Rushmore

Floor Plan: RR2-HM-204

Size: 27'-5" x 56'

Sq. Ft.: Appx. 1,536



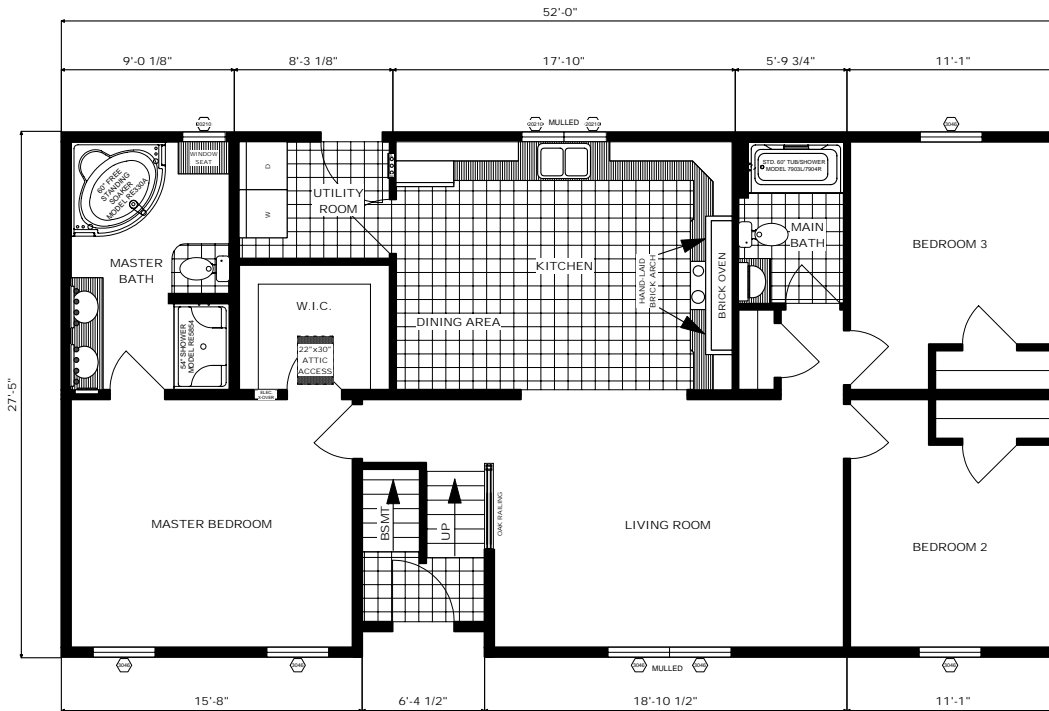
Mount Hood

Floor Plan: RR2-HM-205

Size: 27'-5" x 52'

Sq. Ft.: Appx. 1,426

Featuring the "Brick Oven" Kitchen

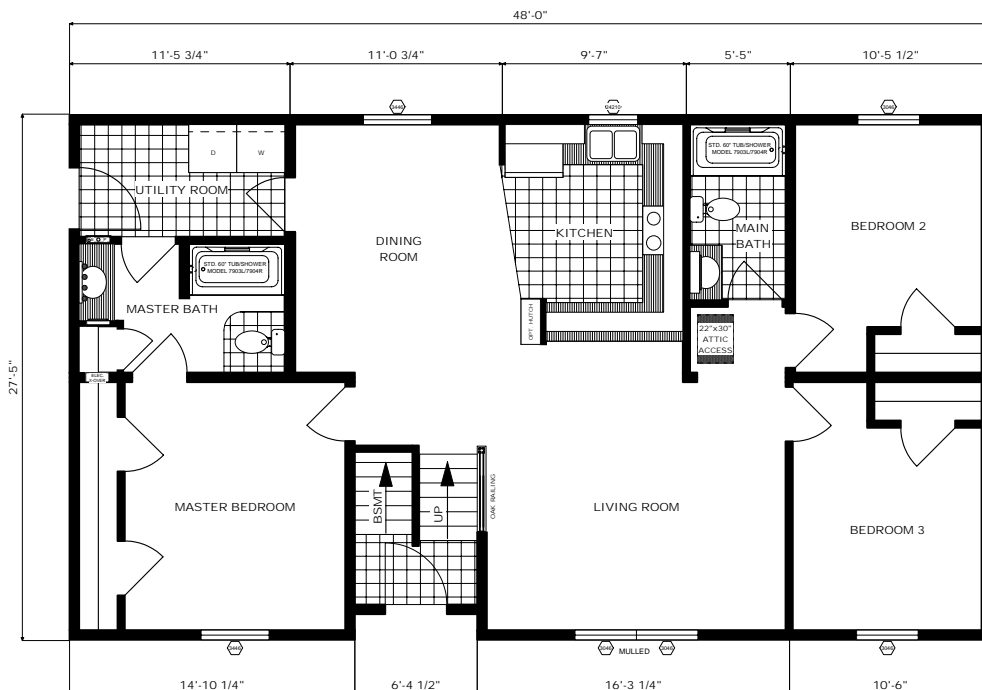


Mount Blanc

Floor Plan: RR2-HM-206

Size: 27'-5" x 48'

Sq. Ft.: Appx. 1,316

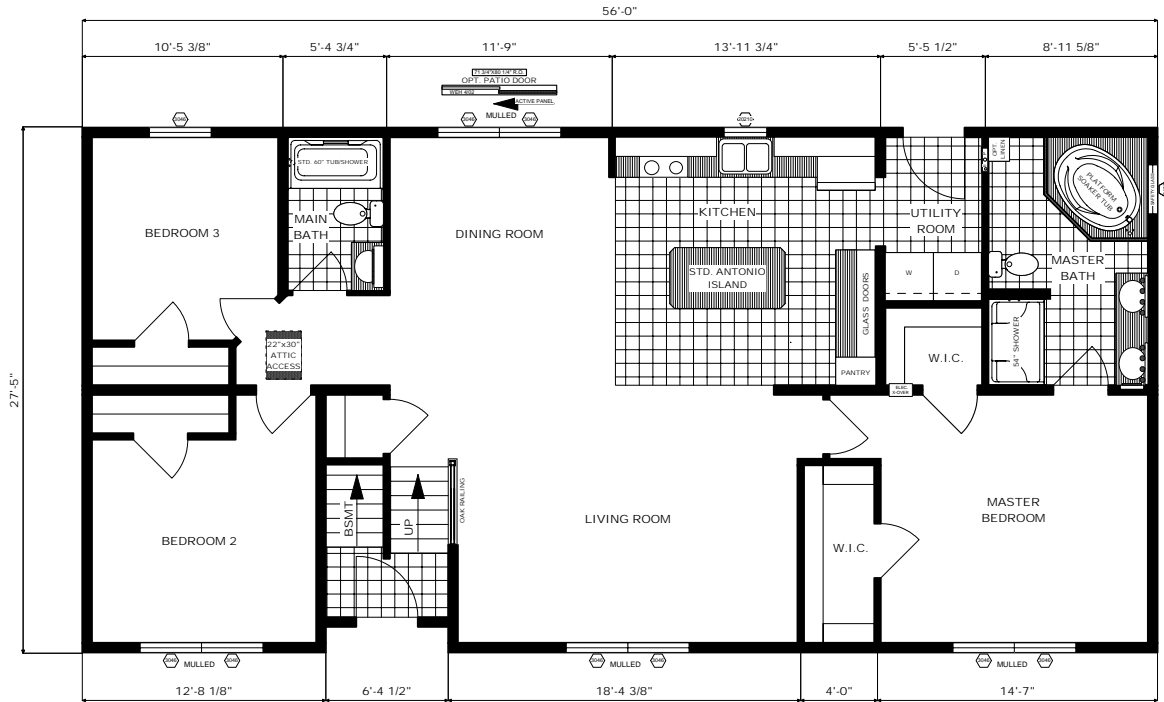


Mount Redington

Floor Plan: RR2-HM-207

Size: 27'-5" x 56'

Sq. Ft.: Appx. 1,536

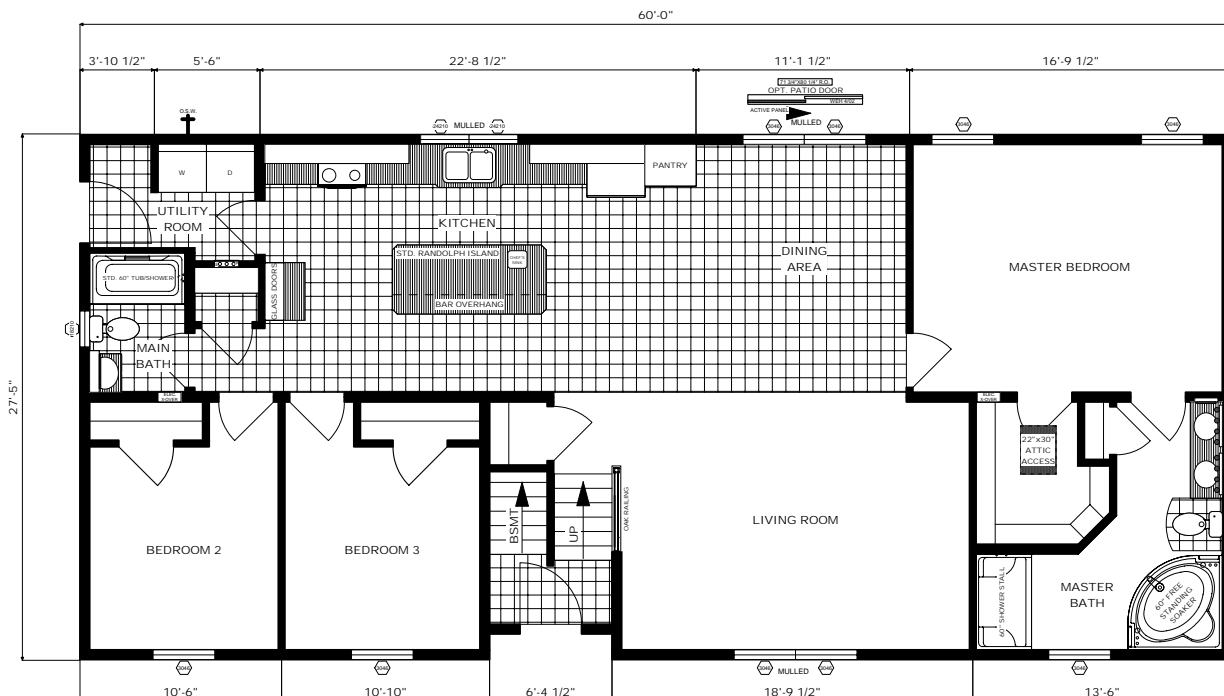


Mount Lafayette

Floor Plan: RR2-HM-0208

Size: 27'-5" x 60'

Sq. Ft.: Appx. 1,645





STRENGTH
Every
PLEASANT VALLEY
Home Is Built To Superior
Construction Standards

- 2" x 6" Exterior Walls - 16" On-Center
- 16" On-Center Floor Framing
& Roof Construction
- 7/16" OSB Sheathing Around Entire
Home & On Marriage Walls
- Roof
- 100# Ground Snow Load

FAR BEYOND THE STANDARD



100 Hammersmith Drive, PO Box 88, Pine Grove, PA 17963
570-345-6500 Sales — 570-345-4440 Fax
www.PVMHI.com