

Bennington

S E R I E S

L-RANCH, T-RANCH &
SPLIT-LEVEL HOMES



Presented By

*Designed for you—
with living your life
in mind*


PLEASANT VALLEY MODULAR HOMES

“Bennington” Split-Level Homes

Presented By

Pleasant Valley Modular Homes, Inc.

Standard Features

Floors [16" On-Center]:

2" x 10" Floor Joists, 16" On-Center
Double 2x10 Perimeter Joists
¾" OSB Tongue & Groove Floor Decking
No Standard Floor Insulation

Exterior Walls [16" On-Center]:

2x6 Graded Wall Studs, 16" On-Center
8' Exterior Sidewall Height
R-19 Fiberglass Insulation

Exterior:

Double Four Vinyl Siding
7/16" OSB Sheathing Under Siding & On Marriage Walls
Tyvek Vapor Barrier
Fiberglass 6-Panel Front Door
Fiberglass 2-Lite Rear Door
Exterior Light at Front and Rear Door
Vinyl Thermopane Windows with Low "E" Glass
15" Raised Panel Shutters on Front Elevation

Roof [16" On Center]:

5/12 Pitch Roof with Shingle Over Ridge Vent
30-Year Architectural Fiberglass Roof Shingles
Eaveguard Ice Shield
6" Fascia and Vented 6" Soffit
100-Pound Ground Snow Load Roof Rafters – 16" O.C.
Smooth Finish Drywall Ceilings
R-33 Cellulose Ceiling Insulation in Standard 5/12 Roof
(Opt. R-38 As Required in Some Areas)

Heating:

No Standard Heating System

Plumbing:

No Standard Water Heater
Outside Water Faucet
Water and Drain Lines Stubbed Through the Floor
Plumb and Wire for Washer
Water Shut-offs at All Fixtures
Single Lever Delta Faucets on All Bath Fixtures
Anti-Scald Valves on Tub/Shower Units
Wire and Vent for Dryer

Electrical:

200 Amp Service with 40 Spaces
Copper Wiring Throughout
Pewter Color Light Fixtures Throughout
Wired Smoke Detectors with Battery Back-Up
Two GFCI Protected Exterior Receptacles
Switched Receptacle in Living Room
Bisque Color Electrical Switches and Receptacles

Interior:

Primed, Finished Drywall Throughout, Including All Closets
8' Flat Ceilings Throughout with Smooth Finished Drywall
25 oz. Saxony Plush Carpet Installed
5.5# Rebond Carpet Pad
Tack Strip Carpet Installation with Carpet Bars
No-Wax Vinyl Flooring
Pre-hung 32" White 6-Panel Interior Doors (Most Areas)
Lever Handles & Mortised Hinges on All Interior Doors
Floor Mount Door Stops (Most Areas)
Designer-Coordinated Window Treatments with 2" Mini Blinds
Hanging Dining Room Chandelier
Ceiling Light Fixtures in All Bedrooms
Vinyl Clad Wardrobe Shelving in Closets and Pantries
Vinyl Foyer Entry
White Wood Molding Profiles
White Window Sills
Up Stair Shipped Loose (Split-Level Only)
Railing Shipped Loose (Split-Level Only)

Kitchen:

8" Deep 33" x 22" Double Bowl Stainless Steel Sink
Single Lever Delta Kitchen Faucet with Sprayer
Soffit Light Over Kitchen Sink (Most Models)
Raised-Panel Oak Cabinets with ¾" Solid Oak Face Frames
Concealed Cabinet Door Hinges
Pewter Color Door and Drawer Pulls
25" Deep Laminate Counter Tops
Ceramic Backsplash on All Counter Tops
Metal Drawer Guide System
Drawer-Over-Door Base Cabinets
Adjustable Shelving in Overhead Cabinets
Shelving in All Base Cabinets

Bisque Kitchen Appliances:

General Electric 18 Cubic Foot Two-Door Refrigerator
General Electric 30" Free Standing Gas Range
30" Non-Vented Range Hood with Light

Baths:

Fixture Color is White
Vitreous China 1.6 Gallon Water Saver Elongated Toilets
36" High Oak Vanity Cabinets with Generous Storage
China Sinks with Overflow and Pop-Up Assemblies
Delta 'SBS' Bath Faucets with Anti-Scald Shower Valve
Armstrong No-Wax Vinyl Flooring
Laminate Vanity Tops
Medicine Cabinets and/or Light with Mirror
60" One-Piece Fiberglass Tub/Shower Units
36" or 54" One-Piece Fiberglass Shower Stalls in Glamour Baths
Fiberglass Soaker Tubs in Glamour Baths as Shown
Tub Drape at 60" Tub/Shower Units
Lighted Exhaust Fan in Baths

All representations and descriptions of the Pleasant Valley product are believed to be accurate at the time of publication. Due to continual product improvement and changes in design and material suppliers, we cannot guarantee pricing and exact duplication of every product mentioned herein. Model availability and specifications are subject to change without notice. Your Retailer/Builder is not an agent of Pleasant Valley Modular Homes, Inc. They, as an independent party, are responsible for your purchase contract and for any and all deletions, additions, alterations, or attachments made to or in your home.

PVMHI 02/08

Index of Floor Plans

Model Name	Floor Plan	Size	Sq. Ft.	Page #
THE CRESTVIEW	SL4-BN-401	27'-5" x 40'/32'	1,974	8
THE HIGHPOINTE	SL4-BN-402	27'-5" x 48'/40'	2,413	9
THE STONEBROOK	SL4-BN-403	27'-5" x 40'/24'	1,755	10
THE SUNRIDGE	RA3-BN-4404	27'-5"/13'8" x 60'/27'5"	2,020	2
THE BROOKFIELD	RA3-BN-4405	27'-5"/15'7" x 60'/27'5"	2,073	1
THE SPRINGFIELD	RA4-BN-4406	27'-5" x 36'/27'5" x 36'/32'8"	1,927	3
THE CLEARFIELD	RA4-BN-4407	27'5" x 26'/27'5" x 34'/33'	1,632	4
THE RICHFIELD	RA3-BN-4408	27'5" x 64' / 27'5" x 13'8"/12'2"	2,108	5
THE ELKRIDGE	RA4-BN-4409	27'5" x 42'6"/41'6" / 27'5" x 30'8"	1,993	6
THE BRIARCREST	RA4-BN-4410	27'5" x 40'/39' / 27'5" x 28'	1,851	7

Sales Phone: (570) 345-6500

Fax: (570) 345-4440

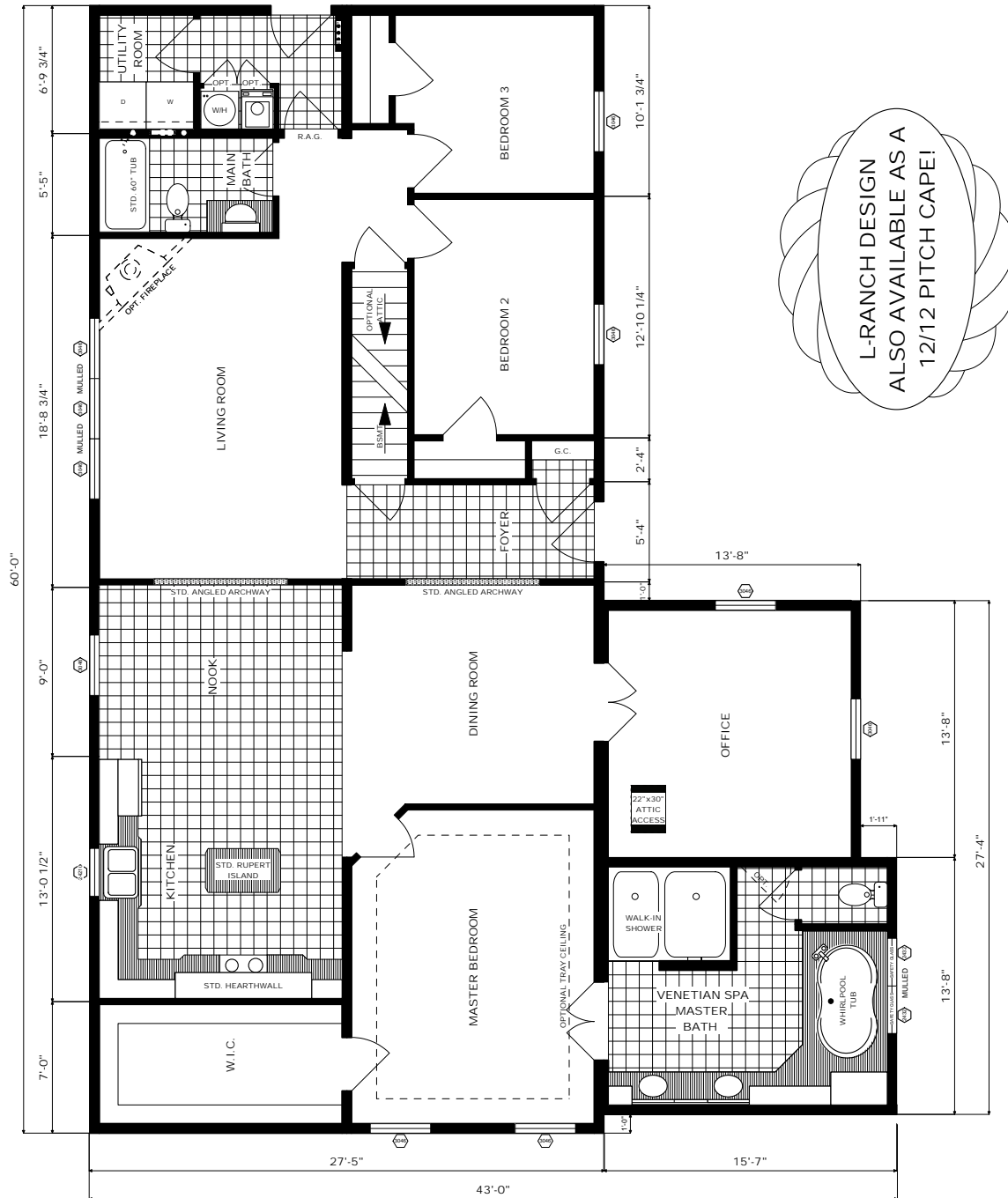
E-Mail: sales@pvmhi.com

www.pvmhi.com

The Brookfield

Floor Plan: RA3-BN-4405
 Size: 27'-5"/15'7" x 60'/27'5"
 Sq. Ft.: Appx. 2,073

Featuring the "Napoli Fireside" Hearth Wall Kitchen & the "Venetian Spa" Master Bath



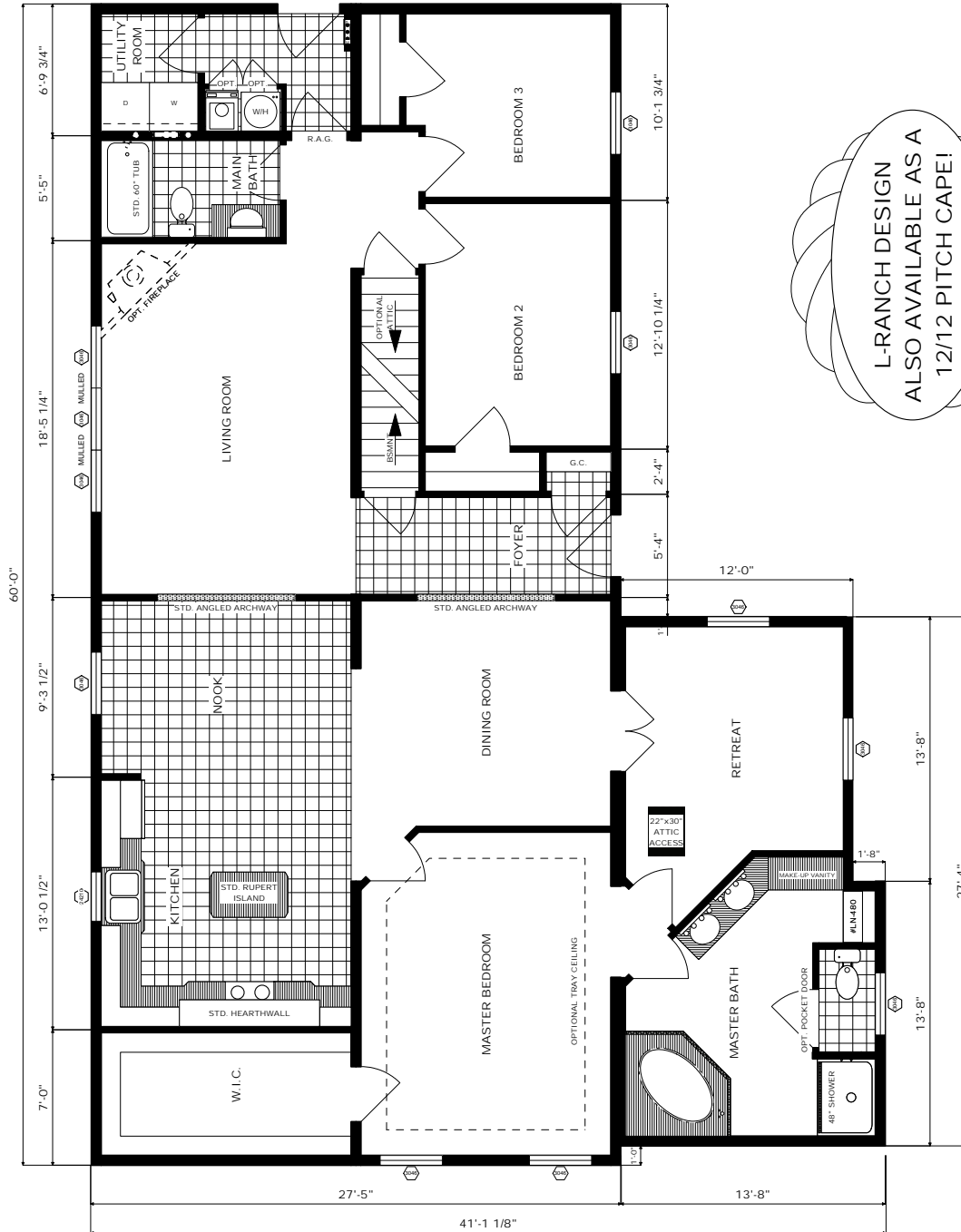
L-RANCH DESIGN
 ALSO AVAILABLE AS A
 12/12 PITCH CAPE!

RENDERING ON FRONT COVER DEPICTS THE FRONT ELEVATION OF THIS HOME BUILT AS A 12/12 PITCH CAPE. IT IS STANDARD AS AN L-RANCH HOME WITH A 5/12 ROOF AND NO DORMERS. SEVERAL OTHER OPTIONS ARE SHOWN IN THE RENDERING.

The Sunridge

Floor Plan: RA3-BN-4404
 Size: 27'-5"/13'8" x 60'/27'5"
 Sq. Ft.: Appx. 2,020

Featuring the "Napoli Fireside" Hearth Wall Kitchen

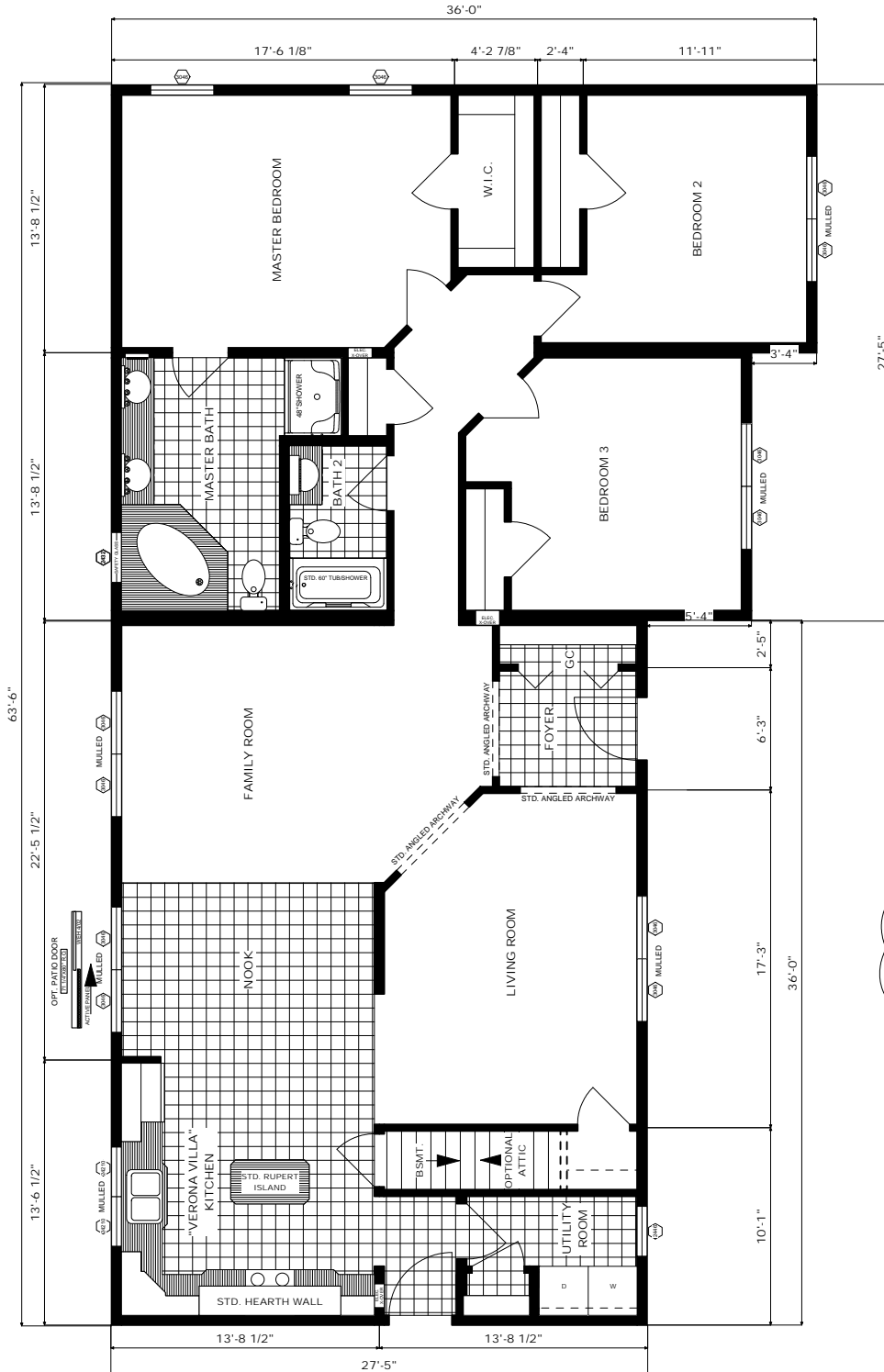


L-RANCH DESIGN
 ALSO AVAILABLE AS A
 12/12 PITCH CAPE!

The Springfield

Floor Plan: RA4-BN-4406
Size: 27'5" x 36'/27'5" x 36'/32'8"
Sq. Ft.: Appx. 1,927

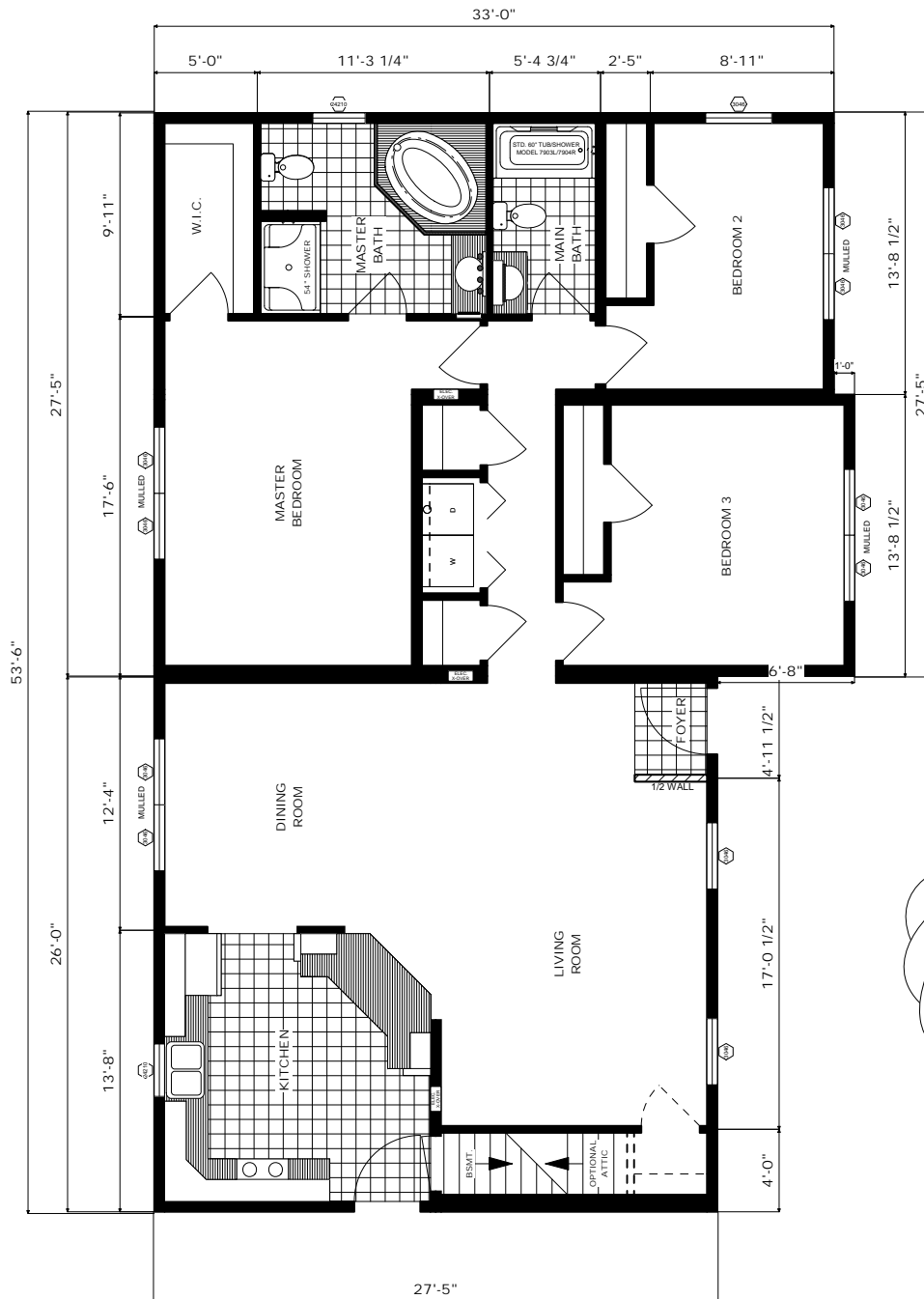
Featuring the "Verona Villa" Hearth Wall Kitchen



L-RANCH DESIGN
ALSO AVAILABLE AS A
12/12 PITCH CAPE!

The Clearfield

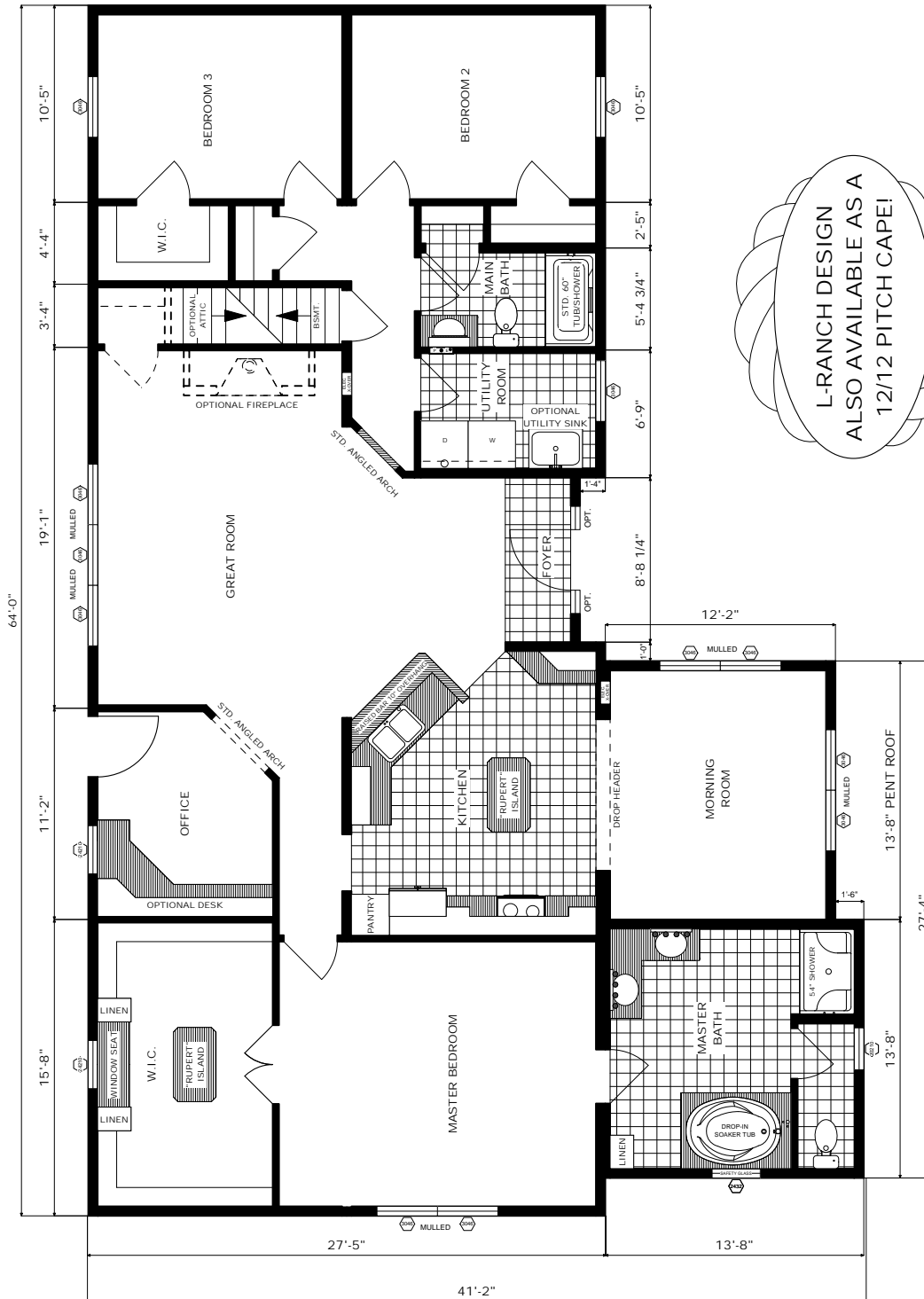
Floor Plan: RA4-BN-4407
 Size: 27'5" x 26'27'5" x 34'33"
 Sq. Ft.: Appx. 1,632



L-RANCH DESIGN
 ALSO AVAILABLE AS A
 12/12 PITCH CAPE!

The Richfield

Floor Plan: RA3-BN-4408
 Size: 27'-5" x 64' / 27'5 x 13'8"/12'2"
 Sq. Ft.: Appx. 2,108

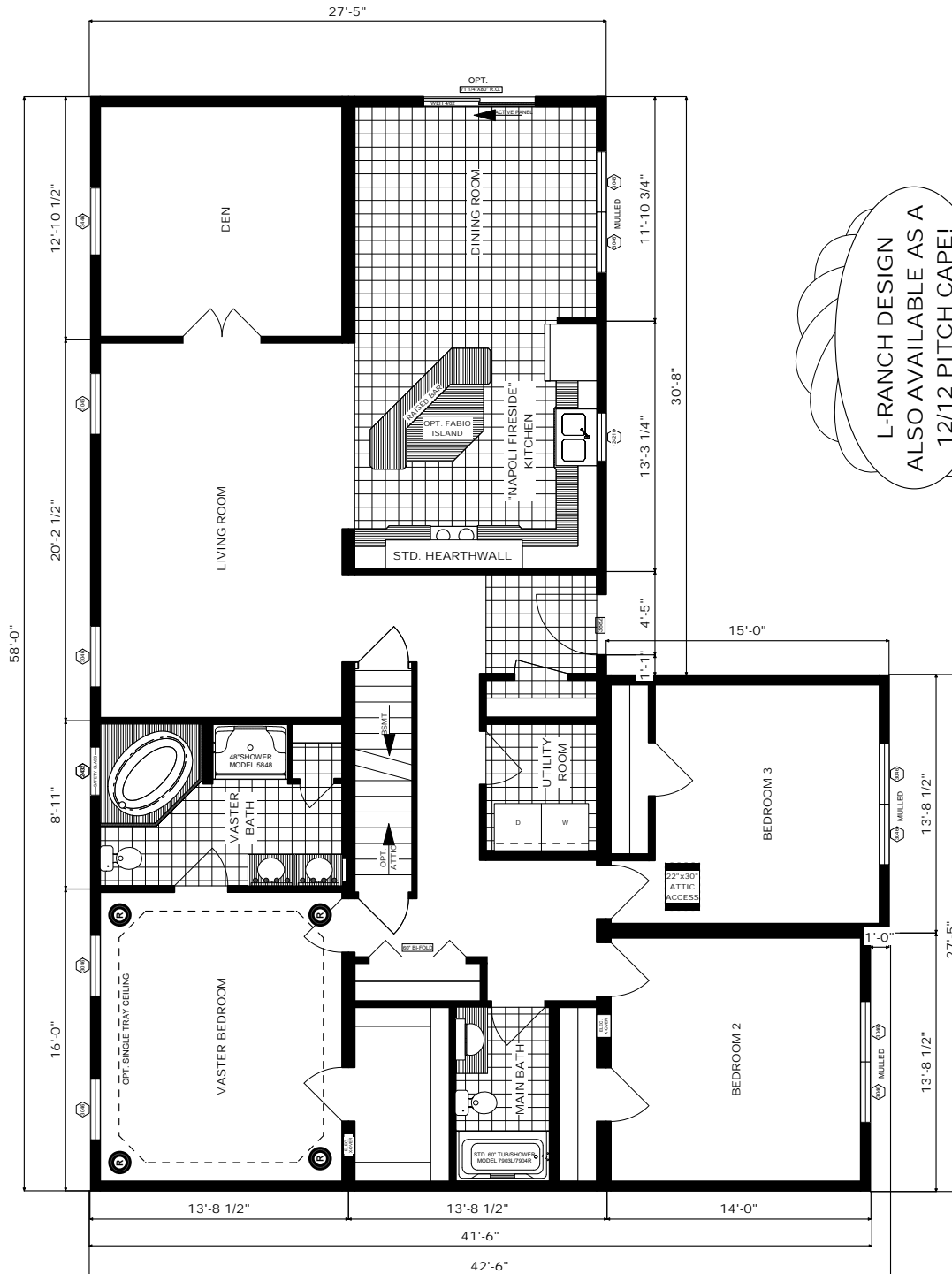


L-RANCH DESIGN
 ALSO AVAILABLE AS A
 12/12 PITCH CAPE!

The Elkridge

Floor Plan: RA4-BN-4409
 Size: 27'5" x 42'6"/41'6" / 27'5" x 30'8"
 Sq. Ft.: Appx. 1,993

Featuring the "Napoli Fireside" Hearth Wall Kitchen

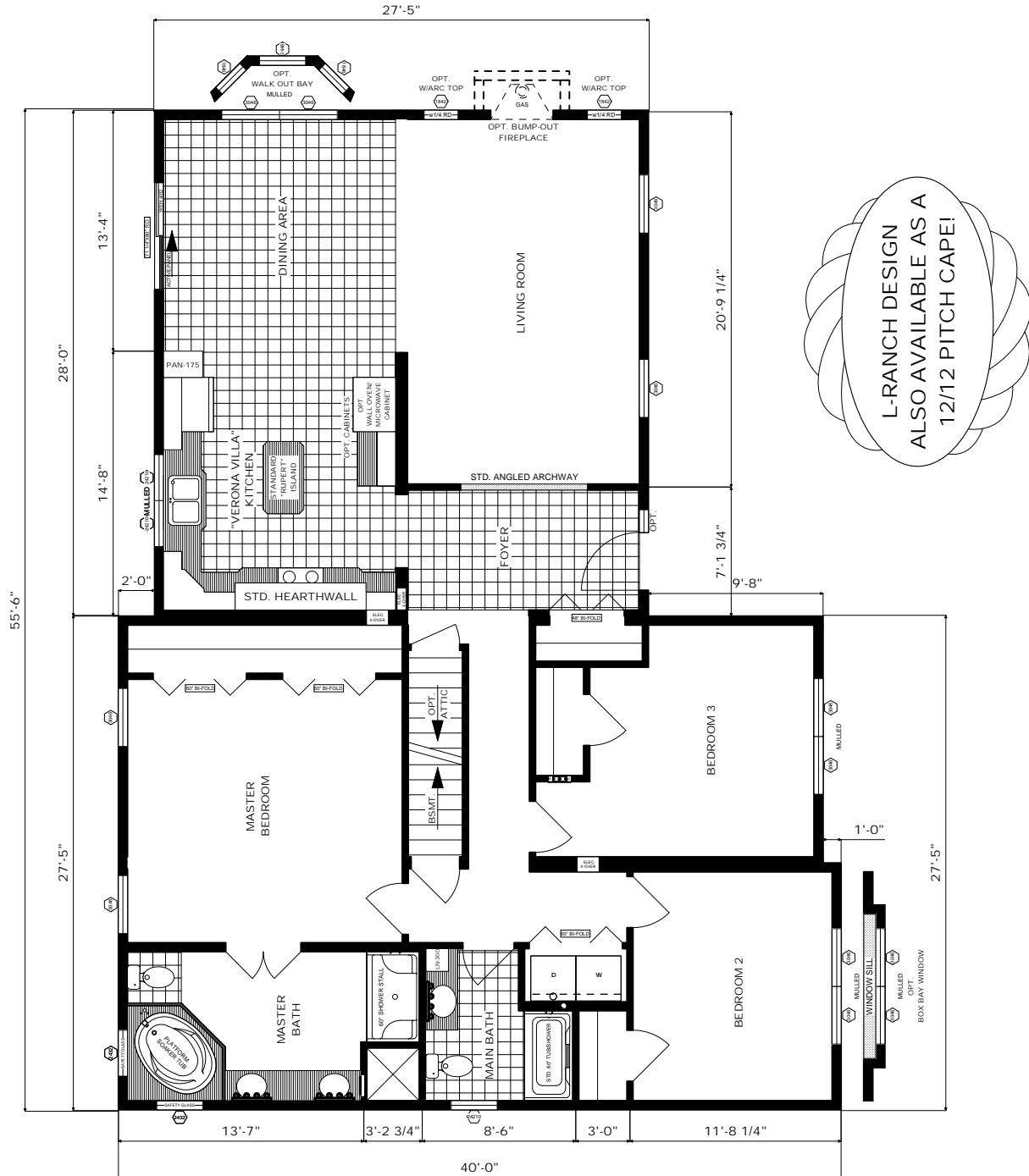


L-RANCH DESIGN
 ALSO AVAILABLE AS A
 12/12 PITCH CAPE!

The Briarcrest

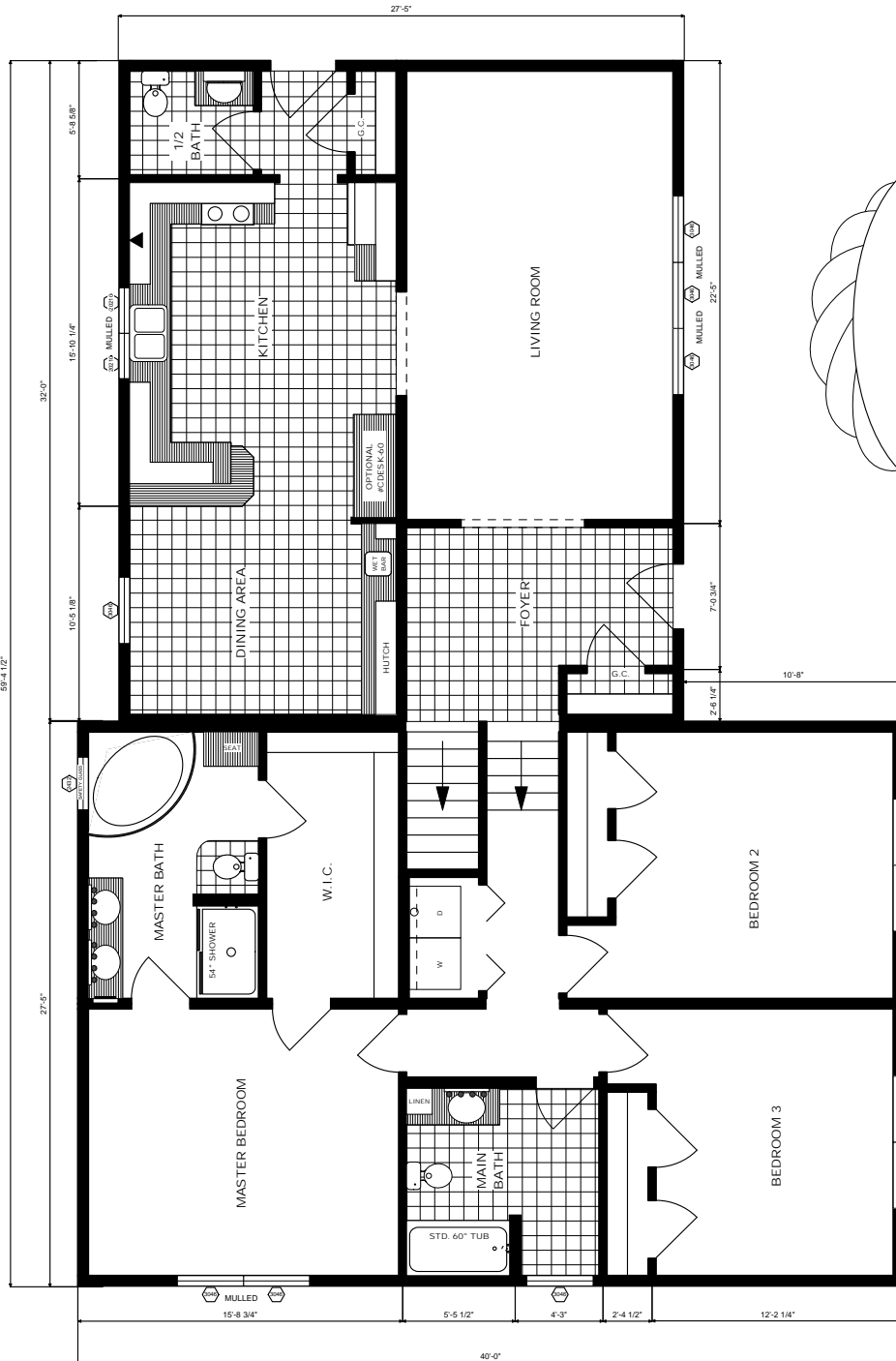
Floor Plan: RA4-BN-4410
 Size: 27'5" x 40'39" / 27'5" x 28'
 Sq. Ft.: Appx. 1,851

Featuring the "Verona Villa" Hearth Wall Kitchen



The Crestview

Floor Plan: SL4-BN-401
 Size: 27'-5" x 40'-32"
 Sq. Ft.: Appx. 1,974



AVAILABLE AS A
 T-RANCH HOME. SIMPLY
 OMIT STAIRS!

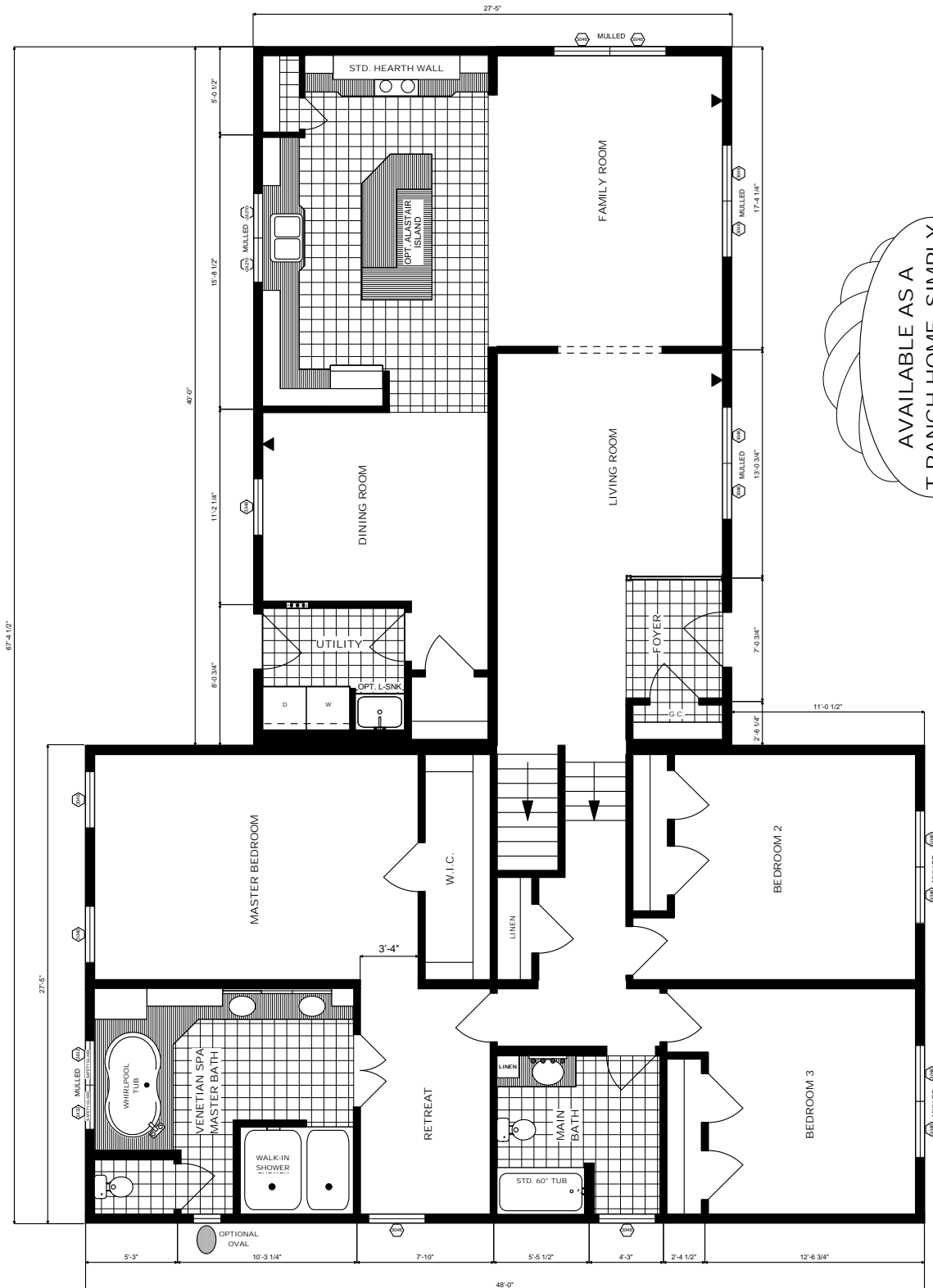
The Highpointe

Floor Plan: SL4-BN-402

Size: 27'-5" x 48'/40

Sq. Ft.: Appx. 2,413

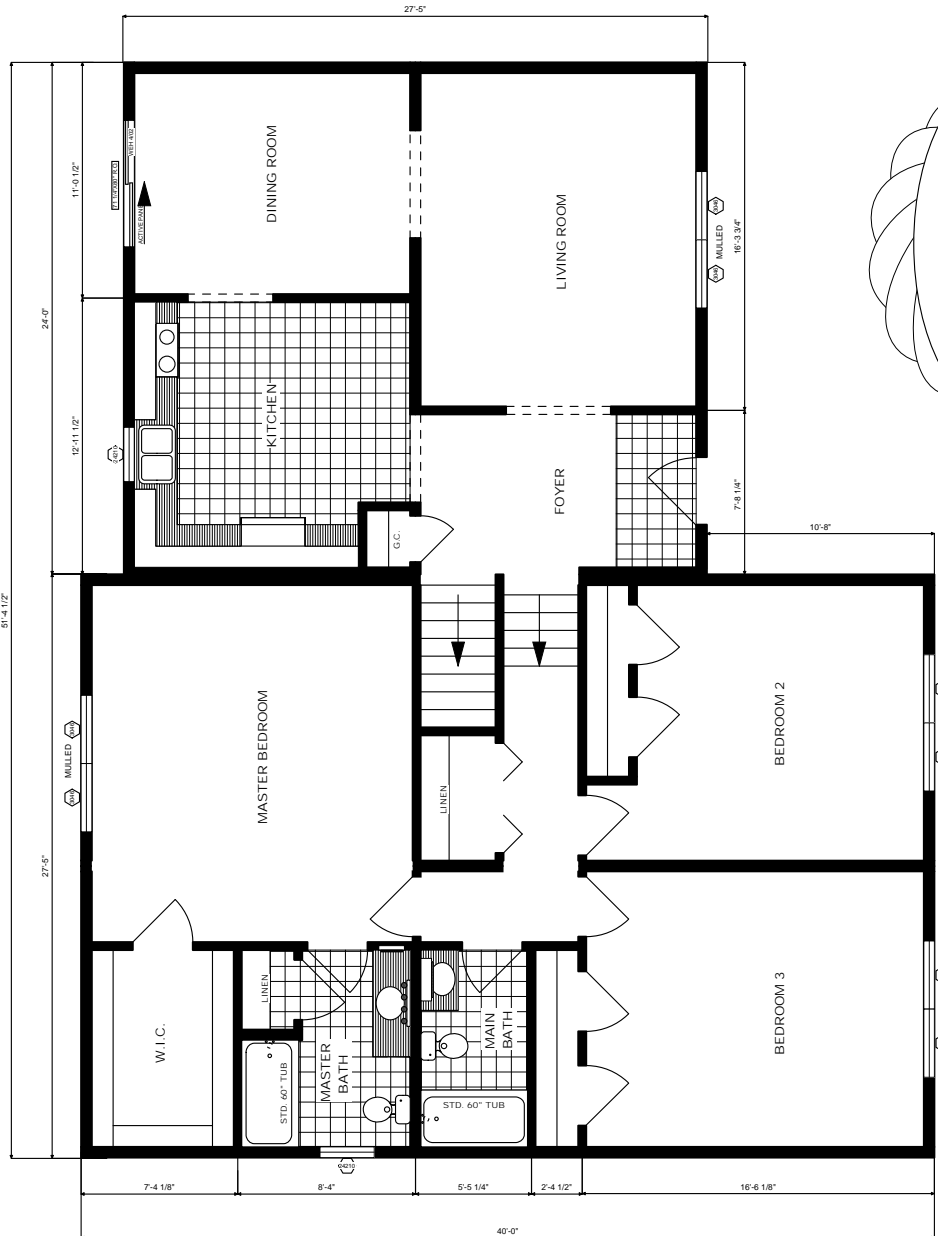
Featuring the "Hearth Wall" Kitchen & the "Venetian Spa" Master Bath



AVAILABLE AS A
T-RANCH HOME. SIMPLY
OMIT STAIRS!

The Stonebrook

Floor Plan: SL4-BN-403
Size: 27'-5" x 40'-24"
Sq. Ft.: Appx. 1,755



AVAILABLE AS A
T-RANCH HOME. SIMPLY
OMIT STAIRS!

The "Briarcrest" w/Opt. 12/12 Cape Roof



- 12/12 Cape Roof System & (2) 7-Foot Doghouse Dormers
- Walk-Out 1846-2446-1846 Bay Window in Dining Area
- Box Bay Double Window on Front Gable End
- Sagebrook Ship Lap Siding with Beige Lineals on Windows & Doors

The "Briarcrest" w/Std. 5/12 Ranch Roof

- Standard 5/12 Roof Pitch
- Fireplace Bump-Out and Walk-out 1846-2446-1846 Bay Window in Dining Area
- Box Bay Window Not Shown
- Ship Lap Hampton Red Siding Shown with White Lineals on Doors & Windows



Some features shown on renderings may be optional. See this floor plan on page 7.
Also on display at the Model Home Village @ Pleasant Valley in Pine Grove, PA



STRENGTH
Every
PLEASANT VALLEY
Home Is Built To Superior
Construction Standards

- 2" x 6" Exterior Walls - 16" On-Center
- 16" On-Center Floor Framing
& Roof Construction
- 7/16" OSB Sheathing Around Entire
Home & On Marriage Walls
- Roof
- 100# Ground Snow Load

FAR BEYOND THE STANDARD



100 Hammersmith Drive, PO Box 88, Pine Grove, PA 17963
570-345-6500 Sales — 570-345-4440 Fax
www.PVMHI.com