



KEYYA

KEYYA

men's	6
women's	12
apparel	18
our specifications	23
our colours	24
our fabrics	27
our factory	27



KEYA COLOUR



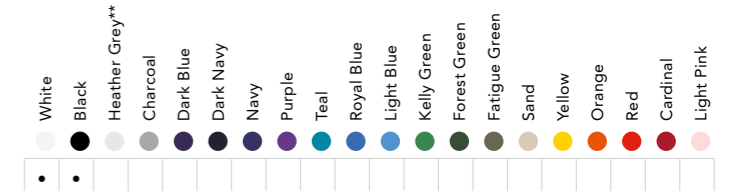


MEN'S



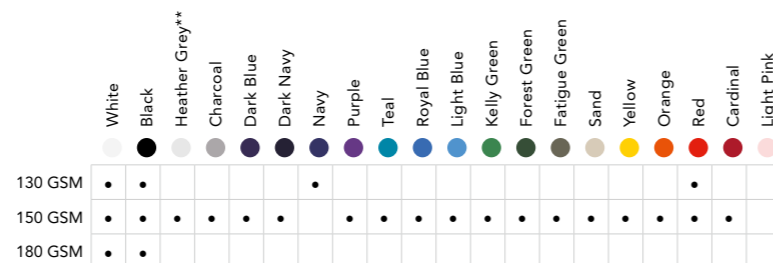
⬇️ MT150 MEN'S TANK

- Euro fit
- 150 GSM
- 100% ringspun cotton
- Size range: S – 3XL
- Shown in Black



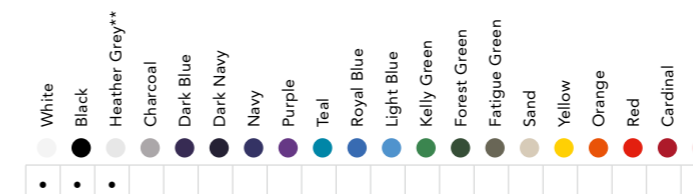
MEN'S CREW NECK TEE ⬆️

- Euro fit
- 100% ringspun cotton
- **Heather Grey – 85% cotton 15% viscose
- 3 fabric weights:
 - MC130 – 130 GSM
 - MC150 – 150 GSM
 - MC180 – 180 GSM
- MC130 Size range: S – 2XL
- MC150 & MC180 Size range: S – 3XL
- Shown in Charcoal



⬆️ MV150 MEN'S V-NECK TEE

- Euro fit
- 150 GSM
- 100% ringspun cotton
- **Heather Grey – 85% cotton 15% viscose
- Size range: S – 3XL
- Shown in Heather Grey



⬇️ MCL180 USA MEN'S L/S CREW NECK

- USA fit
- 180 GSM
- 100% ringspun cotton
- Size range: S – 5XL
- Shown in Black

White	Black	Heather Grey**	Charcoal	Dark Blue	Dark Navy	Navy	Purple	Teal	Royal Blue	Light Blue	Kelly Green	Forest Green	Fatigue Green	Sand	Yellow	Orange	Red	Cardinal	Light Pink
•	•																		

⬇️ MEN'S POLO SHIRT

- Euro fit
- 100% ringspun cotton
- 2 fabric weights:
 - MP5180** – 180 GSM
 - MP5210** – 210 GSM
- Size range: S – 3XL
- Pique finish; Available in ringspun, combed and enzymed
- Shown in Dark Blue

	White	Black	Heather Grey**	Charcoal	Dark Blue	Dark Navy	Navy	Purple	Teal	Royal Blue	Light Blue	Kelly Green	Forest Green	Fatigue Green	Sand	Yellow	Orange	Red	Cardinal	Light Pink
180 GSM	•	•	•															•		
210 GSM	•	•	•															•		



MC180 USA MEN'S CREW NECK TEE ⬆️

- USA fit
- 180 GSM
- 100% ringspun cotton
- Size range: S – 5XL
- Shown in Black

White	Black	Heather Grey**	Charcoal	Dark Blue	Dark Navy	Navy	Purple	Teal	Royal Blue	Light Blue	Kelly Green	Forest Green	Fatigue Green	Sand	Yellow	Orange	Red	Cardinal	Light Pink
•	•																		

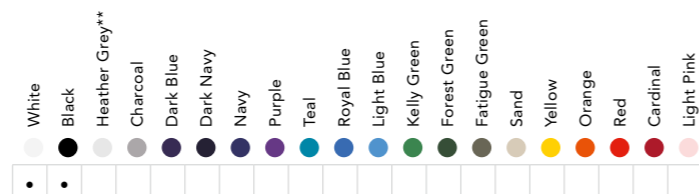


WOMEN'S



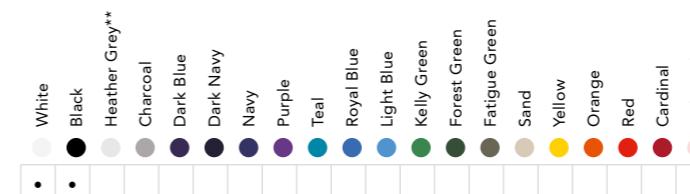
WVS180 WOMEN'S V-NECK TEE

- Euro fit
- 180 GSM
- 100% ringspun cotton
- Size range: S – 2XL
- Shown in Black



WT150 WOMEN'S TANK

- Euro fit
- 150 GSM
- 100% ringspun cotton
- Size range: S – 2XL
- Shown in White



WC150 WOMEN'S CREW NECK TEE

- Euro fit
- 150 GSM
- 100% ringspun cotton
- Size range: S - 2XL
- **Heather Grey - 85% cotton 15% viscose
- Shown in Fatigue Green

	White	Black	Heather Grey**	Charcoal	Dark Blue	Dark Navy	Navy	Purple	Teal	Royal Blue	Light Blue	Kelly Green	Forest Green	Fatigue Green	Sand	Yellow	Orange	Red	Cardinal	Light Pink
150 GSM	•	•	•	•	•	•	•	•	•	•	•	•	•	•	•	•	•	•	•	•



WOMEN'S POLO SHIRT

- Euro fit
- 100% ringspun cotton
- 2 fabric weights:
 - WPS180** - 180 GSM
 - WPS210** - 210 GSM
- Size range: S - 2XL
- Pique finish; Available in ringspun, combed and enzymed
- Shown in Red

	White	Black	Heather Grey**	Charcoal	Dark Blue	Dark Navy	Navy	Purple	Teal	Royal Blue	Light Blue	Kelly Green	Forest Green	Fatigue Green	Sand	Yellow	Orange	Red	Cardinal	Light Pink
180 GSM	•	•	•	•	•	•	•	•	•	•	•	•	•	•	•	•	•	•	•	•
210 GSM	•	•	•	•	•	•	•	•	•	•	•	•	•	•	•	•	•	•	•	•

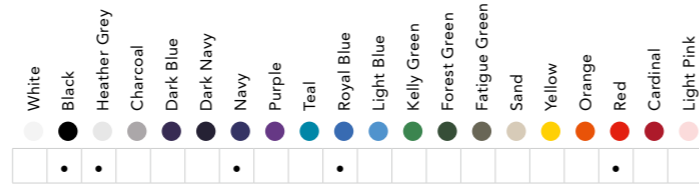




APPAREL

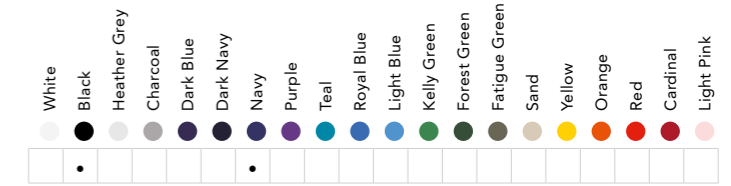
SWP280 UNISEX HOODED PULLOVER

- 280 GSM
- 50/50 poly cotton
- Size range: S - 3XL
- Shown in Heather Grey & Royal Blue



SWZ280 UNISEX HOODED ZIP

- 280 GSM
- 50/50 poly cotton
- Size range: S - 3XL
- Shown in Black & Navy



YOUTH POLO

- Euro fit
- 100% ringspun cotton
- 2 fabric weights:
 - YPS180 – 180 GSM
 - YPS210 – 210 GSM
- Size range: XS – XL
- Pique finish; Available in ringspun, combed and enzymed
- Shown in Light Pink

	White	Black	Heather Grey**	Charcoal	Dark Blue	Dark Navy	Navy	Purple	Teal	Royal Blue	Light Blue	Kelly Green	Forest Green	Fatigue Green	Sand	Yellow	Orange	Red	Cardinal	Light Pink
180 GSM	•	•	•	•	•	•	•	•	•	•	•	•	•	•	•	•	•	•	•	•
210 GSM	•	•	•	•	•	•	•	•	•	•	•	•	•	•	•	•	•	•	•	•

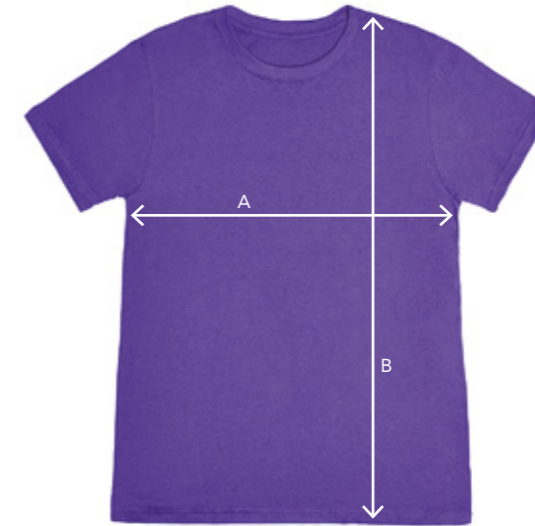


YC150 YOUTH CREW NECK TEE

	White	Black	Heather Grey**	Charcoal	Dark Blue	Dark Navy	Navy	Purple	Teal	Royal Blue	Light Blue	Kelly Green	Forest Green	Fatigue Green	Sand	Yellow	Orange	Red	Cardinal	Light Pink
•	•	•	•	•	•	•	•	•	•	•	•	•	•	•	•	•	•	•	•	•

- Euro fit
- 150 GSM
- 100% ringspun cotton
- Size range: XS – XL
- **Heather Grey – 85% cotton 15% viscose
- Shown in Red

OUR SPECIFICATIONS



MC130 – MEN'S CREW NECK TEE

	XS	S	M	L	XL	2XL	3XL
A	-	50	53	56	59	62	-
B	-	69	72	74	76	78	-

MC150 & MC180 – MEN'S CREW NECK TEE

	XS	S	M	L	XL	2XL	3XL
A	-	50	53	56	59	62	65
B	-	69	71	73	75	77	79

MV150 – MEN'S V-NECK TEE

	XS	S	M	L	XL	2XL	3XL
A	-	50	53	56	59	62	65
B	-	69	71	73	75	77	79

MT150 – MEN'S TANK

	XS	S	M	L	XL	2XL	3XL
A	-	45	48	51	54	57	60
B	-	66.5	68.5	70.5	72.5	74.5	77

MPS180 & MPS210 – MEN'S POLO SHIRT

	XS	S	M	L	XL	2XL	3XL
A	-	50	53	56	59	62	65
B	-	69	71	73	75	77	79

MCL180 – USA MEN'S L/S CREW NECK

	XS	S	M	L	XL	2XL	3XL	4XL	5XL
A	-	45.7	50.8	55.9	61	66	71.1	76.2	81.3
B	-	71.1	73.7	76.2	78.7	81.3	83.8	86.4	88.9

MC180 – USA MEN'S CREW NECK TEE

	XS	S	M	L	XL	2XL	3XL	4XL	5XL
A	-	45.7	50.8	55.9	61	66	71.1	76.2	81.3
B	-	71.1	73.7	76.2	78.7	81.3	83.8	86.4	88.9

WC150 – WOMEN'S CREW NECK TEE

	XS	S	M	L	XL	2XL	3XL
A	-	40.5	43	47	49.5	56	-
B	-	64	66.5	69	71	72.5	-

WVS180 – WOMEN'S V-NECK TEE

	XS	S	M	L	XL	2XL	3XL
A	-	44	47	50	54	58	-
B	-	61	63	65	67	68	-

WT150 – WOMEN'S TANK

	XS	S	M	L	XL	2XL	3XL
A	-	42	45	48	52	56	-
B	-	61	63	65	67	68	-

WPS180 & WPS 210 – WOMEN'S POLO SHIRT

	XS	S	M	L	XL	2XL	3XL
A	-	44	47	50	54	58	-
B	-	61	63	65	67	68	-

SWZ280 – UNISEX HOODED ZIP

	XS	S	M	L	XL	2XL	3XL
A	-	51	54	58	64	68	72
B	-	66	69	71	74	78	82

SWP280 – UNISEX HOODED PULLOVER

	XS	S	M	L	XL	2XL	3XL
A	-	54	58	62	66	69	72
B	-	66	69	71	74	78	82

YC150 – YOUTH CREW NECK TEE

	XS	S	M	L	XL	2XL	3XL
A	36	39	42	45	48	-	-
B	44	50	54	60	64	-	-

YPS180 & YPS210 – YOUTH POLO SHIRT

	XS	S	M	L	XL	2XL	3XL
A	36	39	42	45	48	-	-
B	44	50	54	60	64	-	-

*All measurements are in cm



Navy



Orange



Light Blue



Purple



Black



Fatigue Green



Kelly Green



Sand



Dark Blue



Teal



Forest Green



Red



Charcoal



Light Pink



Yellow



Royal Blue



Heather Grey



Cardinal



White



Dark Navy

OUR COLORS



OUR FABRICS

Keya Knit Composite exclusively produces ringspun garments, assuring durability, better printability and outstanding quality and comfort. All of our cotton used to produce our garments is imported from USA and we then produce all of our yarn in-house, which allows our internal quality control to be of an international standard.

All of the Keya yarn is produced into 'ringspun' cotton; a process of continuously twisting together cotton fibres to make very fine cotton rope. The twisting action makes short cotton hairs stronger and softer. Ringspun cotton is a much lighter weight than regular cotton, though the fabric is softer and more durable.

We use exactly the same amount of cotton to knit a 180 gram t-shirt and a 130 gram t-shirt of the same size, however the ringspun cotton shirt is lighter because of tighter yarn threads. Ringspun cotton compacts the fabric so even though a regular cotton T-Shirt may be heavier, it's the ringspun process that creates the wonderfully light, soft and durable handle of the Keya garments.

OUR FACTORY

Keya T-shirts have been sold and all over the world for more than 20 years, and is one of the leading manufacturers and exporters of knit garments in Bangladesh. As one of the largest and fully integrated facilities in the world, Keya prides itself on both state-of-the-art equipment and a driving force of over 10,000 employees, whose quality assurance make our knitwear one of the world's best.

Keya is committed to creating a safe, responsible and industry leading workplace for all of its employees, while also avoiding the employment of under-aged children at its facilities. Onsite there is an Effluent Treatment Plan (ETP) to treat all outgoing water and effluents, providing a healthier environment for the local area.

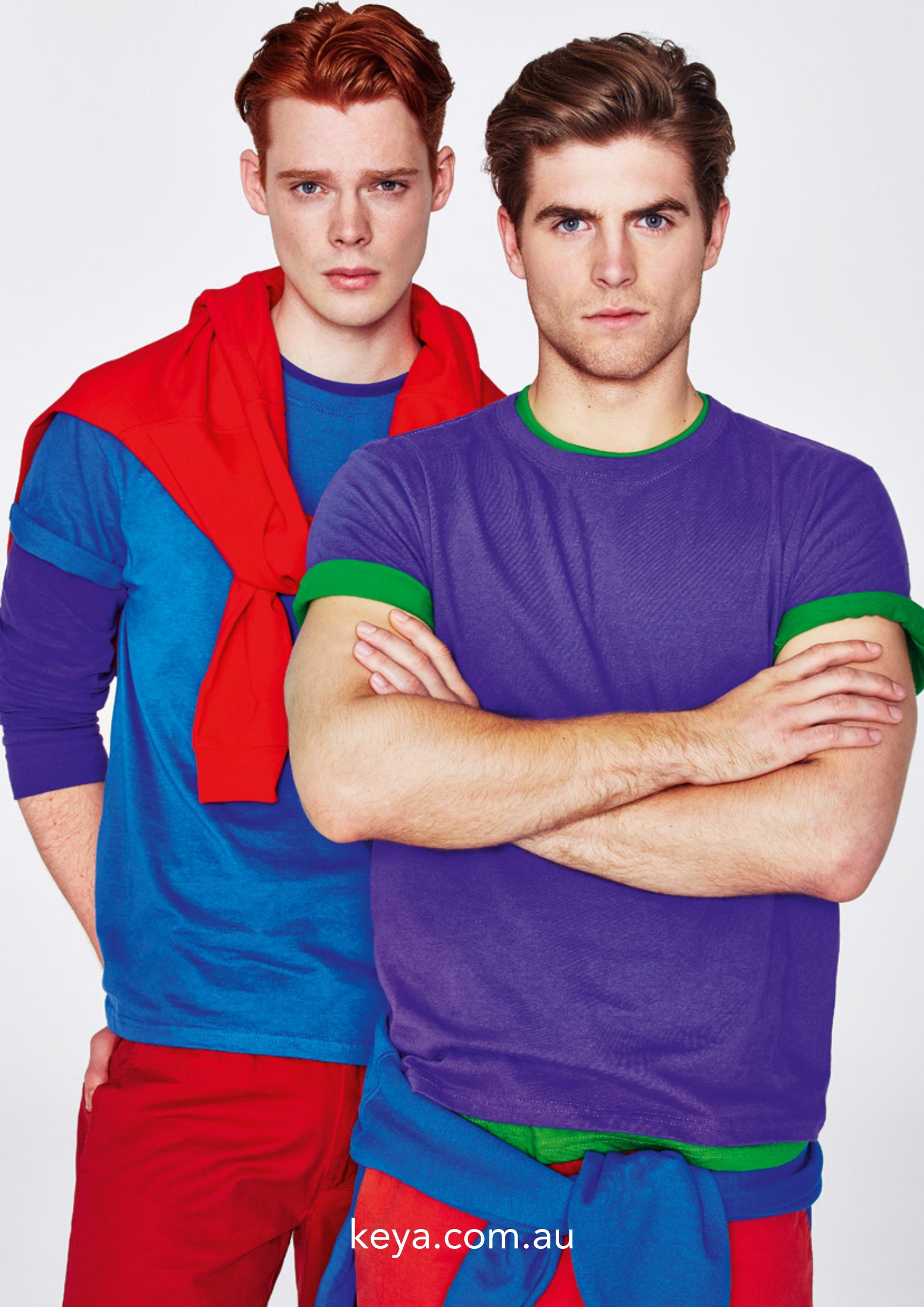
The core success of Keya comes from high quality production, timely shipment and fulfilment of orders. Thanks to our Quality Assurance and Industrial policies, these accomplishments have earned us a gold membership of the prestigious Bangladesh Germany Chamber of Commerce and Industry (BGCCI). Other certifications for quality and compliance include Öko-Tex®- Standard 100, WRAP, Organic Exchange Control Certificates, SEDEX, BSCI.

OUR CORPORATE AND SOCIAL RESPONSIBILITIES

- Medical Insurance
- Legal job protection for young or soon to be mothers
- Pharmacy on production site
- Medical centre on production site
- Fire Department on site
- A company playground for children
- Antipollution investment
- Support and employment of more than 1,000 handicapped and deaf people
- Support of students (paying school expenses)
- Water treatment plant
- Safe and healthy working conditions

Australian distributor:
 SV Imports
 568 Geelong Road
 Brooklyn Victoria
 Australia 3012
 03 9314 9990





keya.com.au