

# The Byron – 555 Peachtree St NE

Atlanta, GA 30308



+/- 5,821 SF Total Available For Lease



## PARKING:

Ample surface parking provided

## NOTES:

- Circa 1890's building located at the intersection of Linden Ave & Peachtree St
- Residential tower about to undergo extensive renovations & improvements into premium in-town lofts.
- Midtown Alliance is implementing exciting new streetscapes
- NCR headquarters, Emory Proton Center, 715 Peachtree & new art gallery all happening on sites surrounding 555 Peachtree!
- 2<sup>nd</sup> generation restaurant & retail opportunities from 1,500 – 3,500 sf
- 14,500 cars per day on Peachtree St & 15,500 cars per day on Courtland

For more information, contact:

Brittany McCall

[brittany@vantageatl.com](mailto:brittany@vantageatl.com)

(678) 686-3106

Kelsey Mandus

[kelsey@vantageatl.com](mailto:kelsey@vantageatl.com)

(678) 686-3109



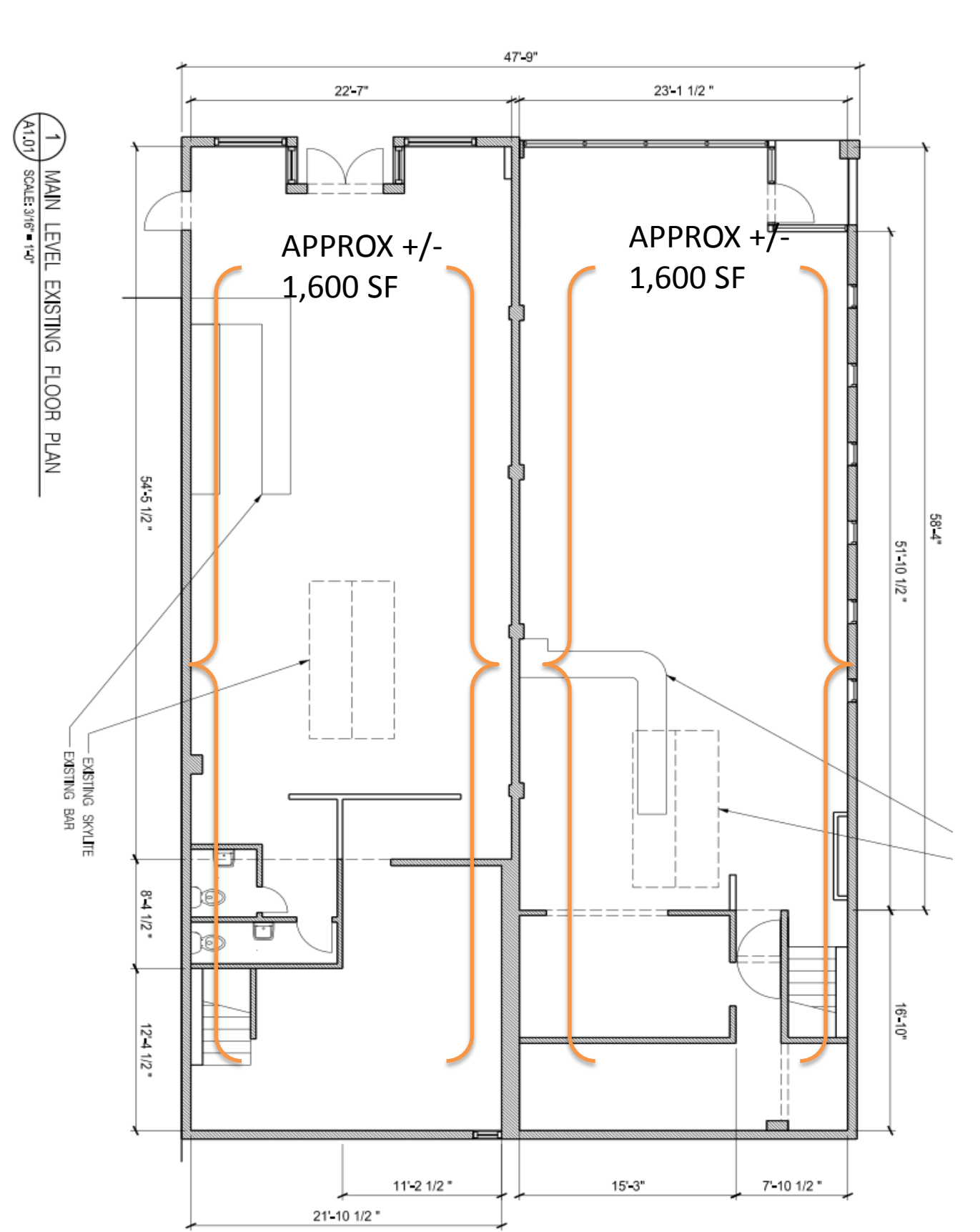
# VANTAGE

REALTY PARTNERS

 [VantageRealtyPartners](https://www.facebook.com/VantageRealtyPartners)  [@VantageAtl](https://twitter.com/VantageAtl)

# The Byron – 555 Peachtree St NE

Atlanta, GA 30308



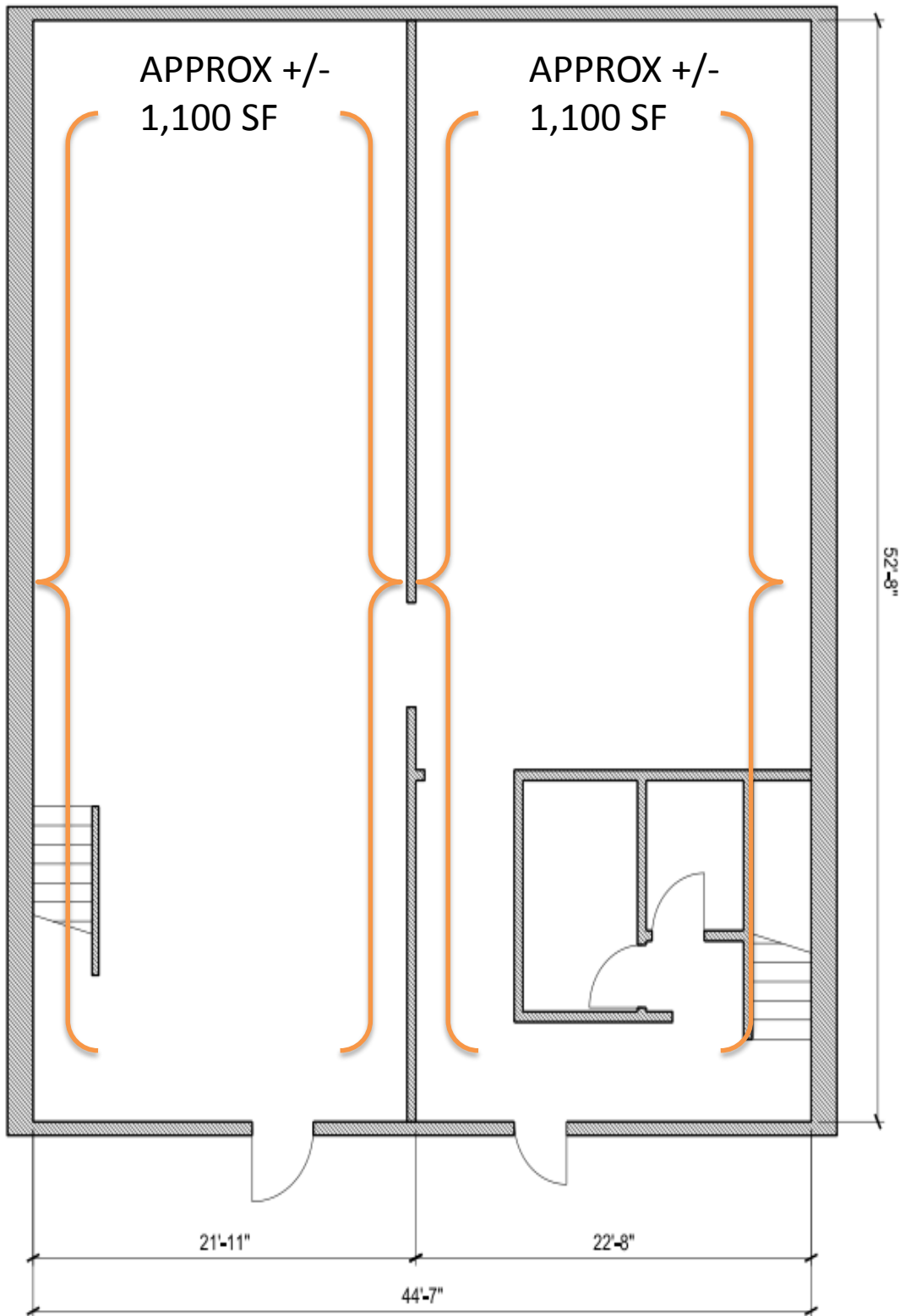
+/- 5,821 SF Total Available For Lease

This information has been secured from sources we believe to be reliable, but we make no representations or warranties, expressed or implied, as to the accuracy of the information. References to square footage or age are approximate. Buyer must verify the information and bears all risks for any inaccuracies. Vantage Realty Partners, LLC.

# The Byron – 549 Peachtree St NE

Atlanta, GA 30308

## LOWER LEVEL SPACE

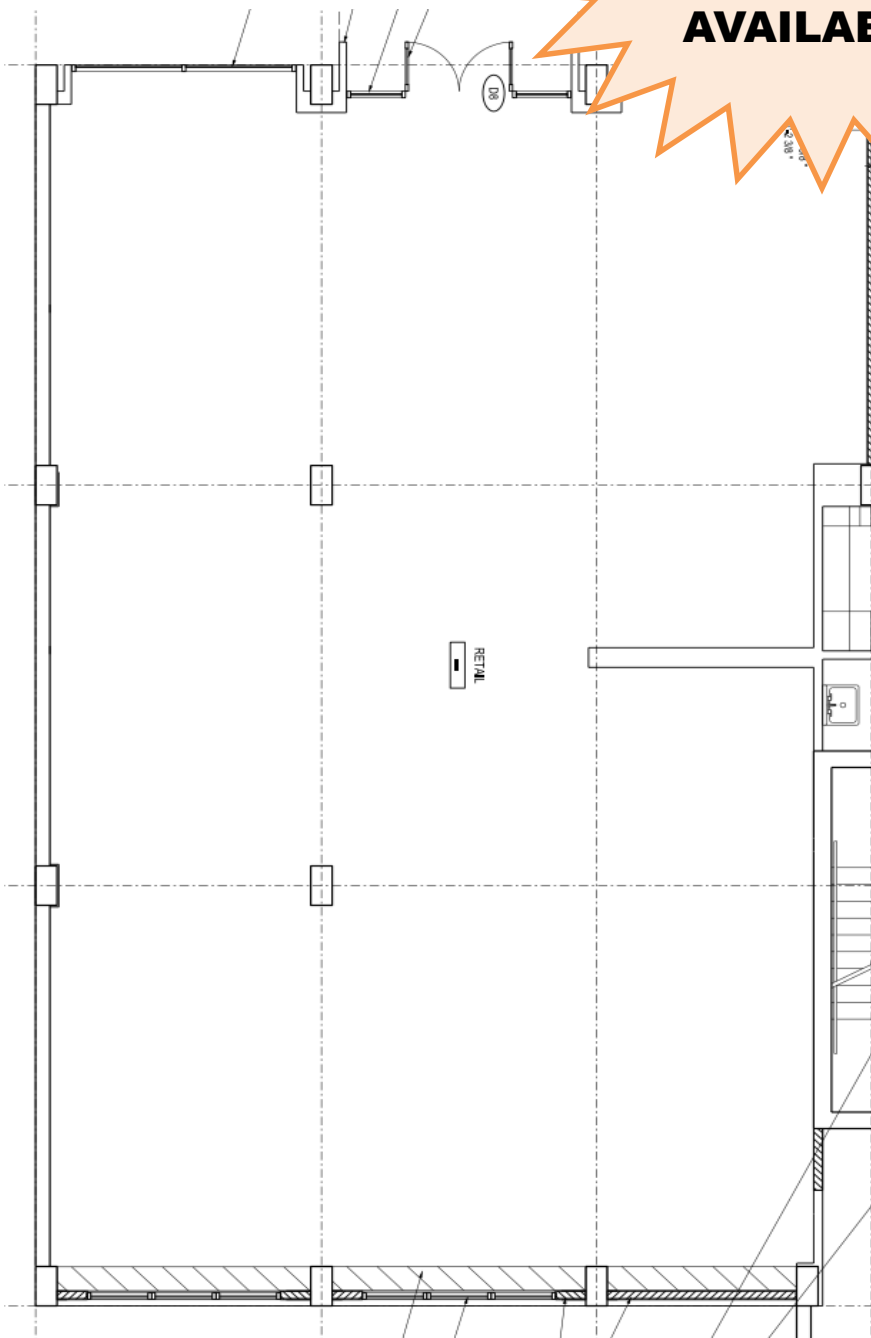


+/- 5,821 SF Total Available For Lease

# The Byron – 549 Peachtree St NE

Atlanta, GA 30308

**2,321 SF OF  
IN-LINE  
RETAIL  
SPACE  
AVAILABLE!**



+/- 5,821 SF Total Available For Lease