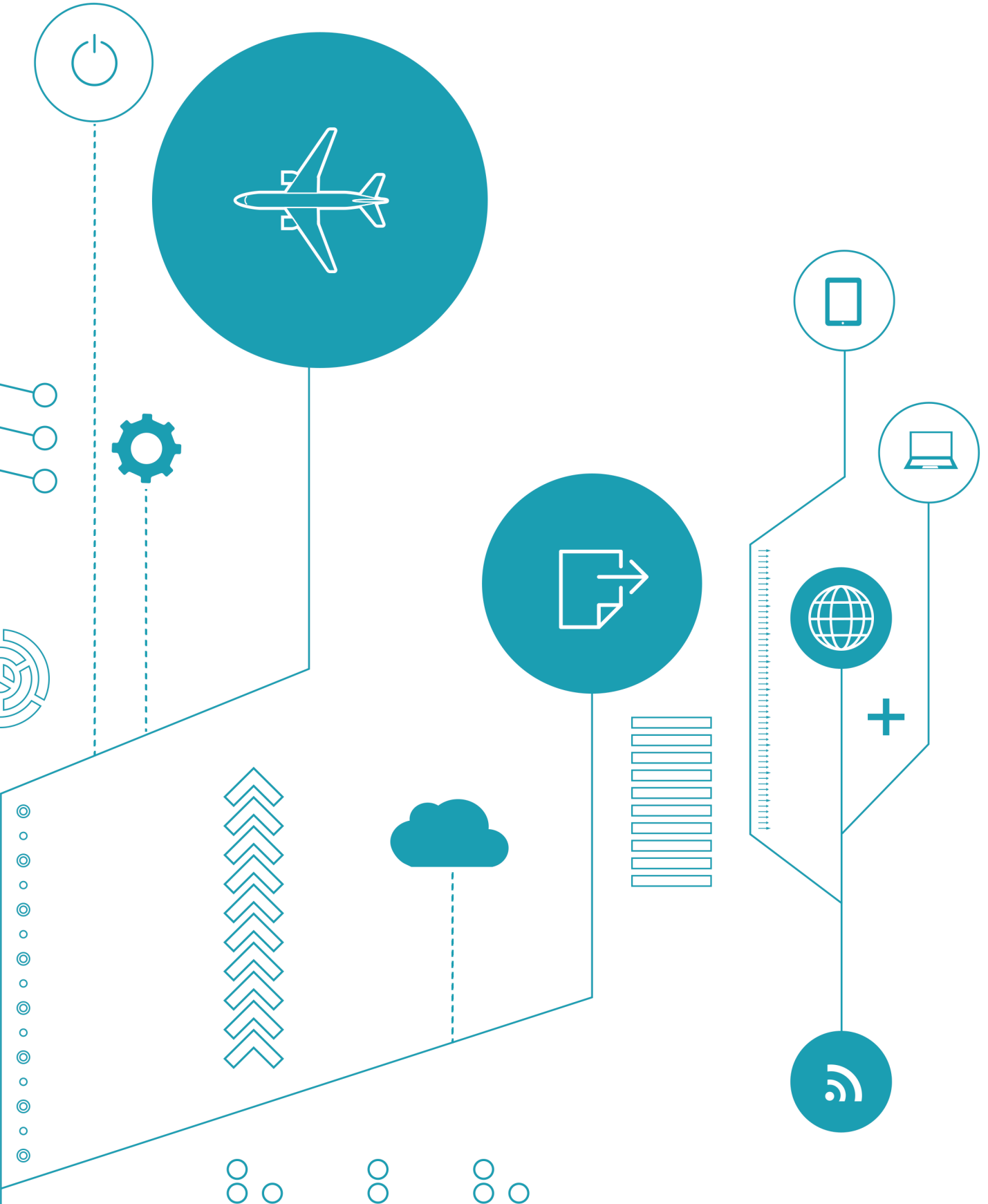


# eHBL

SIMPLIFIED eMANIFEST SOLUTION



# eHBL

## SIMPLIFIED eMANIFEST SOLUTION

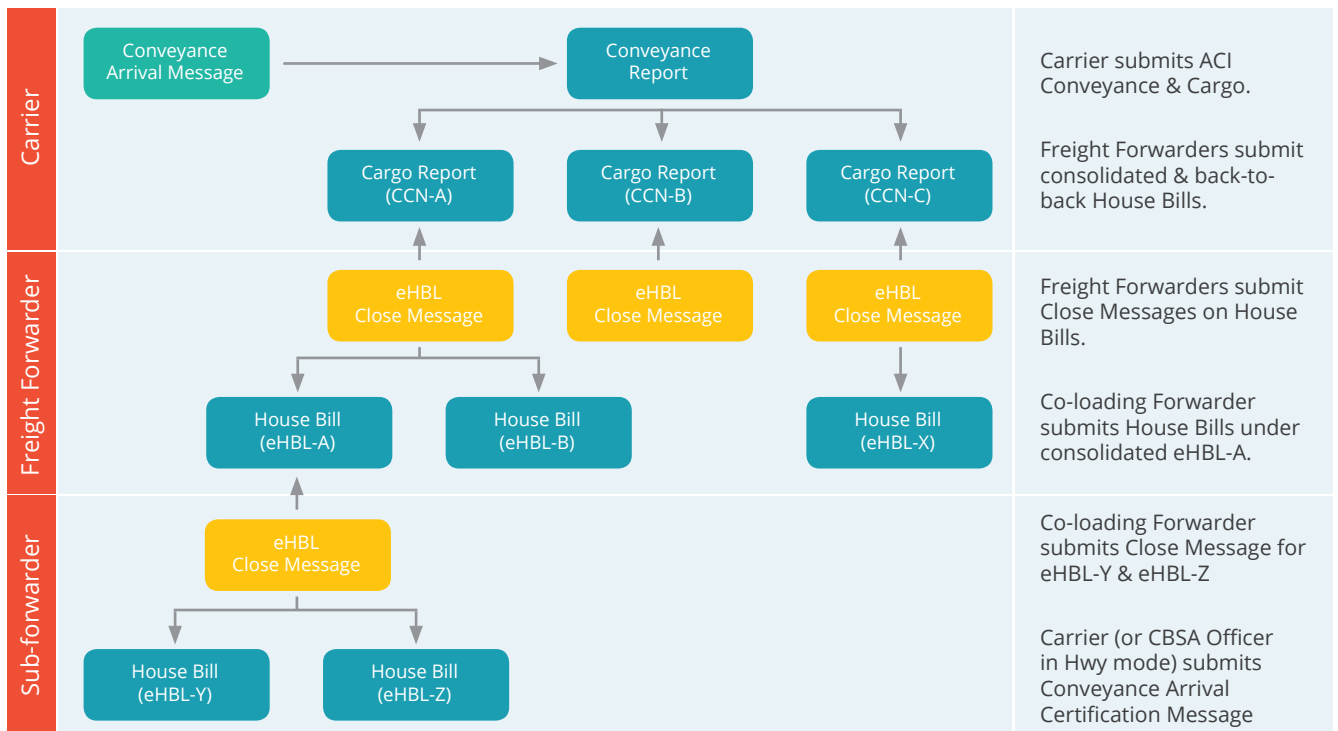
## WHAT IS eHBL?

ACI eManifest House Bill (eHBL) is a requirement for Canadian freight forwarders to submit house-level Bill of Lading data to the **Canada Border Services Agency (CBSA)**. The program eliminates paper-based house bill reporting and replaces legacy ACI supplementary data submitted to the CBSA. CrimsonLogic is proud to offer you best-in-class solutions to enable efficient and accurate compliance with the eHBL regulations.

## WHO SHOULD USE IT?

Canadian Freight Forwarders who hold an 8,000 series freight forwarder code issued by the CBSA.

## HOW DOES IT WORK?



## eHBL FILING TIMEFRAMES

Marine	Air	Rail	Highway
24	4	2	1
24 hours prior to loading container or prior to arrival, cargo type & origin dependent	Four hours prior to arrival in Canada or at "wheels up" on shorter lights	Two hours prior to arrival in Canada	One hour prior to arrival in Canada

# BENEFITS

## 24/7 CUSTOMER SUPPORT

On demand access to support for all services

## OFFLINE NOTIFICATIONS

Receive email and SMS alerts on key filing events

## DATA RETENTION

Comply with Customs Act records keeping regulations

## USER ROLES MGMT

HQ, branch and agent configured user id's for efficient oversight of local and overseas trade-chain partners

## MASTER EHL GROUPING

Reduced eHBL data-entry and simplified Close Message filing

## AUTO-FILL, TEMPLATES

Numerous in-app functionality for valuable time savings

## REPORT GENERATION

Data reporting exported to spreadsheet for internal audit, records keeping and management purposes

# SUBMITTING eMANIFESTS

## WEB

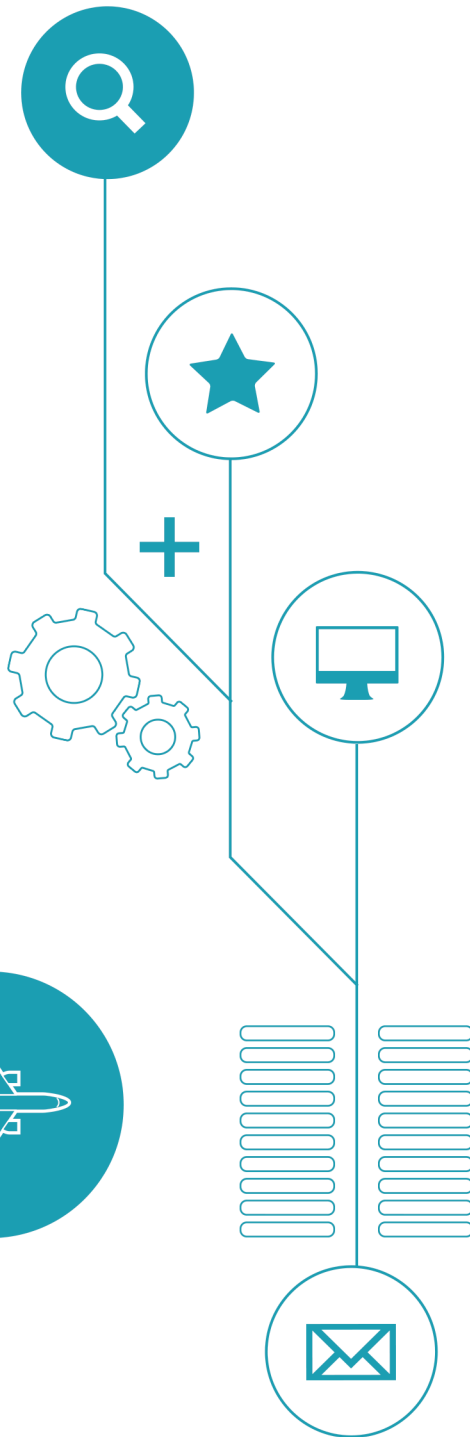
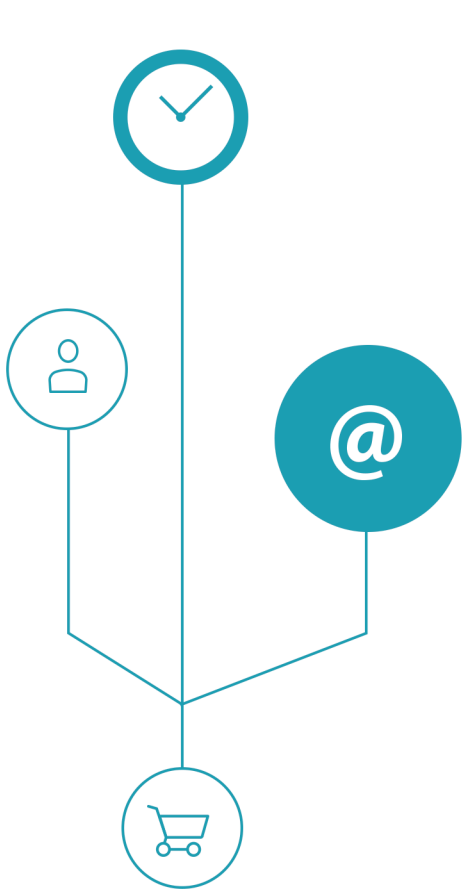
An online account which stores all your trade-chain partners plus all your previous house bill eManifest details. Many enhanced features on the web account are available to ease your data entry, such as eManifest templates creation. Email or SMS alerts for responses received from Customs are communicated directly to the filer and other team members in the organization who collaborate to ensure smooth eManifest filings.

## BPO (Business Process Outsourcing)

The BPO solution is a program for freight forwarders who may need after-hours or holiday support. Simply fax or email your paperwork to our 24/7 eHBL processing facility and we will prepare and submit the eManifest to CBSA. This is also an ideal option for freight forwarders that need a simple backup system in place.

## INTEGRATION

If operating with an in-house or 3rd party software, we offer data integration that can seamlessly transfer manifest submissions and responses directly to customs. CrimsonLogic will work with your IT so that filers don't have to rekey the same data across different applications.



[www.etrade.crimsonlogic.com](http://www.etrade.crimsonlogic.com)

