

2008-2009

Monterey City Disposal Service

SERVICE GUIDE

Recycling, Yard Waste & Garbage Pick Ups

Presorted
Standard
U.S. Postage Paid



Included in this Guide:

- Recycling Service
- Household Hazardous Waste
- Used Oil
- Holiday Service Schedule
- And More....



REDUCE ◦ REUSE ◦ RECYCLE

www.montereydisposal.com



Monterey City Disposal Service
P.O. Box 2780
Monterey, CA 93942

Thank you for allowing us to serve the Citizens of Monterey for another year. We would like to take this opportunity to share some tips to make your lives a little bit easier.

SERVICES

Just Give Us A Call



How Do I Start Service?

If you have just moved into a home within the City of Monterey call us at (831) 372-7977 to establish service. This is also a good time to learn about what can and cannot be put in your 3 color-coded carts.

Billing Questions

Have questions about your bill? Contact us today and we can walk you through items or identify possible errors. Call us today at (831) 372-7977 to resolve your questions.

Moving

No worries. Please leave the carts for the next resident. Also, call us so we can stop service at your residence so you do not get charged for additional waste service.

Christmas Tree Pick Up

When the holiday is over, Monterey City Disposal will pick up your trees Dec 26th through January 9th, if they are placed on the curb on your regular service day. Trees must be cut to under 4 feet. No decorations, tinsel, or flocked trees allowed. After January 9th, please cut your tree and place it in your green yardwaste container.

Large Items/Bulk Collection

Curbside collection of large items is available for residents of single family residential dwellings. Large items are collected by appointment only. Examples of items include large and small household appliances, furniture, rugs, mattresses and white goods such as refrigerators and washing machines. Construction and demolition materials are not eligible for this service. Some items may have special disposal handling charges. For an appointment or additional information, call us at (831) 372-7977.

Holiday Schedule

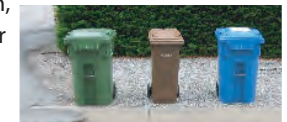
No collection on Christmas or New Years Day. Both fall on Thursday. Therefore Thursday service will be on Friday and Friday Service on Saturday.

Cart Placement

City of Monterey has transitioned to automated residential collection vehicles to reduce emissions and increase efficiency. For these automated collection vehicles to operate most efficiently, curbside carts need to be placed at the curb or street edge in the proper manner, 18" apart.

Place carts out by 6:00 am on your collection day and allow 18 inches on all sides of each cart. Do not place carts where they are obstructed by vehicles, road signs or trees.

Do not tie the lids shut.



BLUE Cart

Weekly Recycling Service

OK For Recycling

PAPER

Books
Boxes, Packages
Carbonless Paper
Cardboard
Catalogs
Cereal boxes
Colored/Construction paper
Computer paper
Copy paper
Coupons
Detergent boxes
Egg cartons (paper only, no Styrofoam)
Envelopes with plastic windows
Frozen food boxes
Gift wrap
Gift Tissue Paper
Junk mail
Magazines
Manila folders
Newspapers and inserts
Office Paper
Paper (adhesive/post its)
Paper bags
Paper packaging with remnant tape
Pet food bags
Ribbon
Shredded paper
(In a clear plastic bag)
Telephone Books

GLASS

Rinsed; all colors
(lids, caps OK)
Bottles/Beverage containers
Jars
Wine Bottles

PLASTICS

Containers only; empty; rinsed with arrows #1- #7, Lids, caps OK
Bleach Bottles
Buckets
Beverage containers (soda, water, juice)
Detergent bottles
Food containers
Household cleaning containers
Milk jugs
Salad dressing bottles (rinsed)
Shampoo/Conditioner Bottles
Water jugs

METAL

Aerosol cans (empty)
Aluminum cans
Aluminum foil (Clean)
Aluminum pie plates
Beverage cans
Food cans (clean)
Pet food cans
Steel cans
Tin cans

REMINDER

Place all recyclables in the Blue Recycling Cart

Be sure all materials fit inside the cart with the lid closed

Before discarding, consider reusing or donating.

Bag your Bag & Tie!

MCDS will accept filmy plastic if it is consolidated into one bag and tied at the top.

Plastic that can be included:
Grocery Bags
Zip Lock Bags
Bubble Wrap
Dry cleaner Bags
Other stretchy/filmy plastics

DO NOT RECYCLE

Ceramics, window glass, drinking glasses and light bulbs,

Food, garbage and organic or green waste materials

Styrofoam or polystyrene packing peanuts, metal pipe or plumbing fixtures or appliances

Hazardous Waste



GREEN Cart

Weekly Yard Waste Recycling

OK For Yard Waste Recycling

Brush
Flower cuttings
Flowers
Garden trimmings
Grass
House plants
Lawn Clippings
Leaves

Prunings
Shrubby
Tree Limbs up to 3 inches in diameter should be cut to 3-foot lengths
Wood chips
Yard Trimmings



REMINDER

Collection is the same day as garbage service

Be sure all materials fit inside the cart with lid closed

No garbage or inorganic materials (plastics, glass, metal, paper)

DO NOT INCLUDE:

Rocks and concrete
Sod and dirt
Building materials
Large tree trunks and stumps greater than 3 inches in diameter or more than 3 feet in length
Palm Fronds, Cactus, Ice Plants
Pet waste

BROWN Cart

Weekly Garbage Service

OK For Garbage

6-pack rings (please cut)
Auto Glass
Binders (plastic)
Carbon paper
Cigarette Butts
Cotton Balls
Computer Disks
Contaminated Paper
Deodorant Casing
Diapers
Drinking glasses
Extension Cords
Feminine Products
Foam (all types)
Food and snack waste (Try composting!)
Fireplace Ash (Bagged)
Hangers (dry cleaners will take back hangers)
Hoses
Ice cream wrappers
Laminated items
Leather
Light bulbs (no fluorescent)
Metallic wrapping paper
Mirrors
Rope

Packing peanuts (bagged or take to a shipping store)
Paper clips
Pet feces (bagged)
Photographs
Plastic plants
q-tips
Records, tapes, cds
Rubber bands
Rubber/neoprene
Rugs/mats
Shoes (unwanted or can't be donated)
Shower curtains, liners
Sponges
Straws, Stir sticks (plastic)
Stuffed animals, toys
Styrofoam
Tape
Tempered Glass (Corning, Pyrex)
Textiles (unwanted or can't be donated)



REMINDER

Materials must fit inside cart with lid closed

Before discarding items, consider reuse or donating

Place only trash in garbage cart

Place cart at the curb by 6 a.m. or the night before

Toothpaste tubes
Transparencies, microfilm, negatives (acetate)
Utensils (plastic)
Vacuum cleaner bags & dust (Must be bagged)
Window Glass
Wood (treated)

TOXICS

Household Hazardous Waste

It is illegal to dispose of hazardous waste in the garbage, down storm drains, or onto the ground.

Many common products that we use in our homes and daily lives may contain hazardous ingredients and require special care when disposed.

City of Monterey Residents can drop off HHW FREE of charge at the Monterey Regional Waste Management District.

Acceptable HHW Materials

Antifreeze	Motor Oil	Pool Chemicals
Batteries	Nail Polish, Removers	Propane Tanks
Drain Openers	Oven Cleaners	Used Oil Filters
Fluorescent Bulbs	Paint, Latex or Oil	Wood Cleaners
Grease, Rust Solvents	Paint Strippers	Metal Cleaners
High-Intensity Lamps	Paint Thinners	Herbicides
Lighter Fluid	Pesticides, Insecticides	Gasoline
Mercury Thermometers		

Not Acceptable

Asbestos	Radioactive Materials	Treated Wood
Explosives	Rail Ties	Tires
Medical Waste		

Monterey County Residents can bring up to 15 gallons or 125 lbs of HHW per turn-in. *Businesses, please call for charges

Electronic waste consists of any consumer or business electronic device that has become "obsolete" or is nearing its useful life in the eyes of the consumer. Many of these products can be reused, refurbished, or recycled.

Electronic Waste Recycling Includes:

Televisions	Speakers	Monitors	LCD's
Printers	Telephones	Stereos	Calculators
Fax Machines	MP3 Players	Microwave ovens	Keyboards
Cell Phones	Laptops and more...	Electronic toys	Mice

Monterey Regional Waste Management District

14201 Del Monte Blvd

Marina, CA 93933

(831) 384-5313

www.mrwmnd.org

Hours

M-F 8:00 to 5:00

Sat, 8:00 to 4:30

Used Oil Collection

Did you know that you can recycle your used motor oil curbside? Contact Monterey City Disposal at (831)372-7977 and they will provide you with a FREE used oil starter kit. If you live in a multi family unit, you can utilize the regional drop off locations. Visit www.MontereyRecycles.org for Used Oil drop off locations.