



This puppet theater is inspired by the book "A Christmas Goodnight" and will inspire lots of holiday play! This set was created with little people in mind, but do keep in mind that the initial cutting and assembling should be done by an adult. I suggest assembling first as the cutting may take a bit of time.

Supplies you will need:

- 1) Printed illustrations on good quality card stock paper
- 2) Cereal box, or other box that can support an opening of approx. 7 x 9.25 inches (18 x 23.5 cm)
- 3) Scissors
- 4) Small Brads: These are not the same as regular size brads. They are used for scrap-booking and can be found in most craft stores
- 5) Small Wooden Dowels: or BBQ skewers...even chopsticks will work
- 6) Safety Pin: for pre-punching the holes
- 7) Tape: to adhere the wooden dowel to the puppet

INSTRUCTIONS:

- 1) PRINT: Print out these PDF files onto good quality card stock. If your printer does not accept thick paper, you can print onto regular printer paper, and then glue to cardstock before cutting.
- 2) Carefully cut out all the pieces. Some pieces are small, so take your time.
- 3) Poke a hole on the black dots located on all the characters. This will make fastening the brads much easier, and your paper is less likely to break.
- 4) Assemble the characters and use the photos here for reference. Notice that some legs and arms are best placed behind the character's body to look as real as possible.
- 5) Place the cut proscenium to a box of your choice. A cereal box works really well. Trace the opening of the proscenium (with a pencil so you don't blemish the paper) and then cut into the box where you have traced.
- 6) Tape or glue the proscenium to the box. Poke two holes into the crown ("My Puppet Theater") and fasten to the top of the proscenium. See Picture.
- 7) Place the wooden dowels on the back of the dolls and adhere with tape.
- 8) Enjoy playing!

This set was inspired by the book:

A CHRISTMAS GOODNIGHT written by NOLA BUCK and illustrated by myself, Sarah Jane Wright

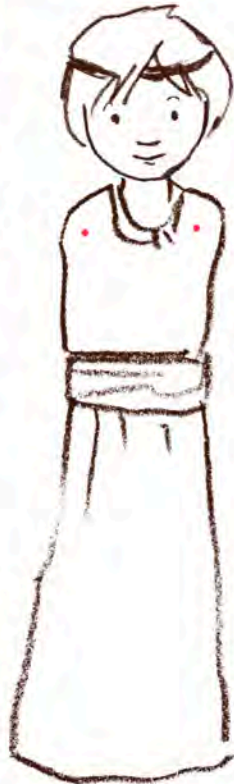
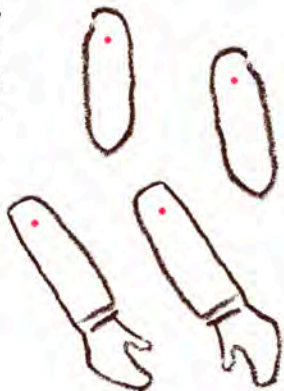
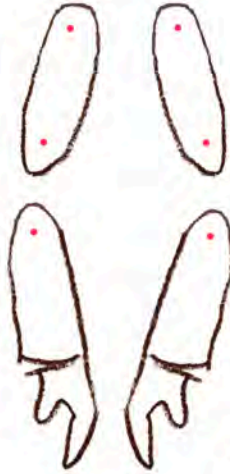
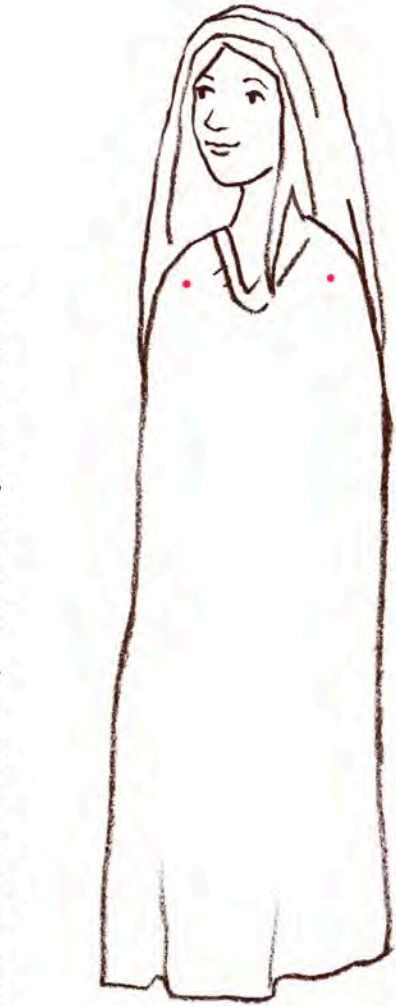
All images are © Sarah Jane Studios and for Personal use only.

You can visit my blog for more pictures and information:
<http://sarahjanestudios.com/blog/make-things/>

Nativity Puppet Theater

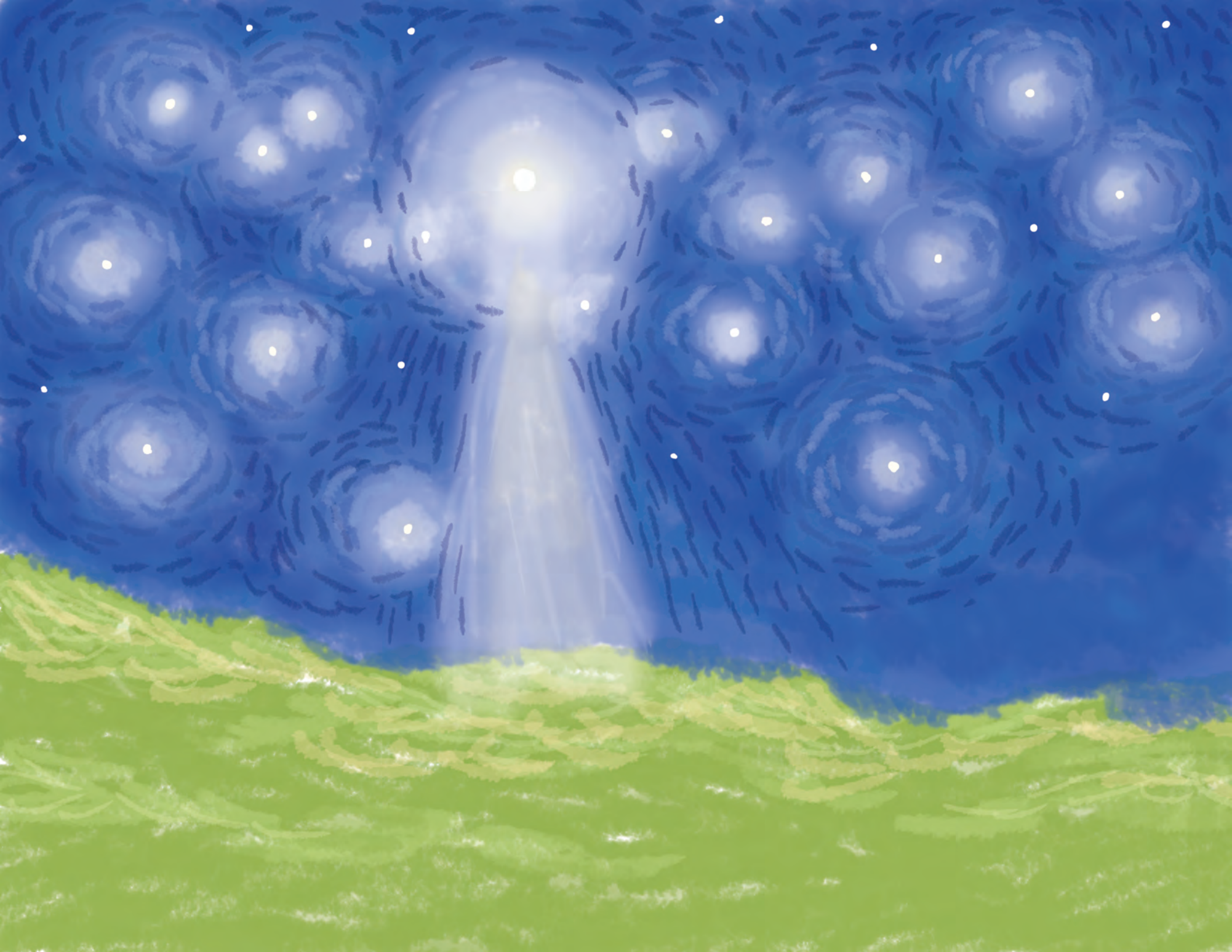
characters from *A Christmas Goodnight*

© sarah jane studios For Personal Use Only. www.sarahjanestudios.com



Instructions:

- 1) Color each character and piece
- 2) poke holes in the red dots with a safety pin
- 2) cut out along the outside edge
- 4) assemble the characters using small brads
- 5) Tape or glue a wooden skewer, or small dowel to the back of the doll for use in the Puppet Theater
- 6) MANGER: cut the half circles and the manger along the dashed lines to allow the manger to be free standing.





MY
NATIVITY