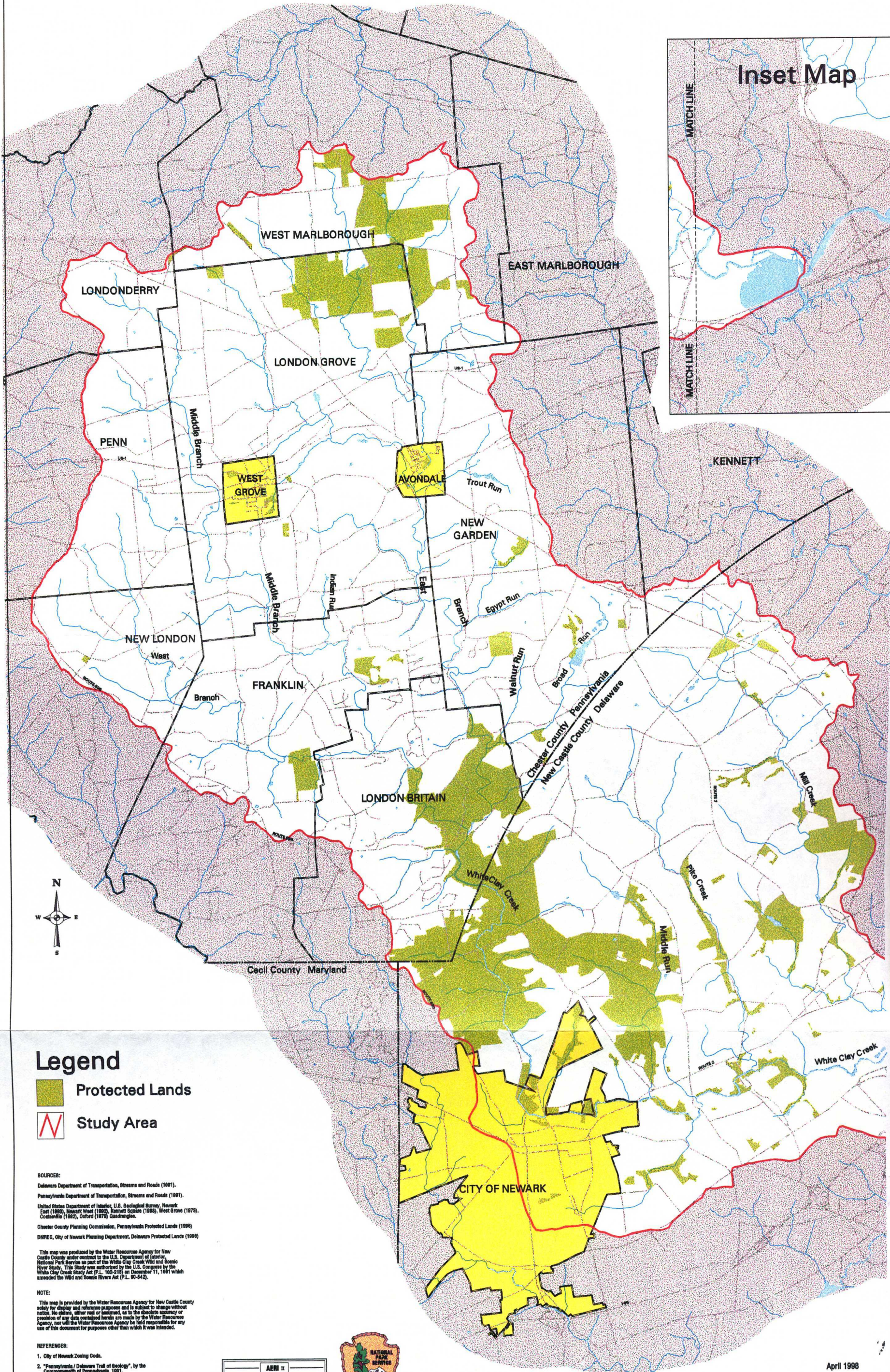


White Clay Creek Wild and Scenic River Study Area Protected Lands



Legend

- Protected Lands
- Study Area

SOURCE:
 Delaware Department of Transportation, Streams and Roads (1991).
 Pennsylvania Department of Transportation, Streams and Roads (1991).
 United States Department of Interior, U.S. Geological Survey, Newark East (1965), Newark West (1965), Forest Square (1968), West Grove (1978), Coatesville (1982), Oxford (1978) Quadrangles.
 Chester County Planning Commission, Pennsylvania Protected Lands (1990)
 DNREG, City of Newark Planning Department, Delaware Protected Lands (1998)

NOTE:
 This map is provided by the Water Resources Agency for New Castle County solely for display and reference purposes and is subject to change without notice. No claims, either real or assumed, as to the absolute accuracy or precision of any data contained herein are made by the Water Resources Agency, nor will the Water Resources Agency be held responsible for any use of this document for purposes other than which it was intended.

- REFERENCES:**
1. City of Newark Zoning Code.
 2. "Pennsylvania / Delaware Trail of Scenery", by the Commonwealth of Pennsylvania, 1981.
 3. State and County Parks, digitized by the New Castle County Department of Parks and Recreation, 1990-1993.

