



The Candid Canid



JUDITH A BASSETT
Canid Education & Conservation Center

PREVIEW PARTY

ISSUE 1

That was one wild party!

by ABassett

We would like to thank all of those that joined us at our Preview Party on Aug 6th, 2016 to learn more about the work we will be doing at the JABCECC and to meet some of our Ambassador animals.



The party held at Pizza Port at Bressi Ranch brought some of our closest friends and colleagues and many we have not had the opportunity to meet, but share our love and passion for animals. Guests gathered from all over the country to help support our work. We had such a diverse group of people from, CEOs of companies, lawyers, rock stars, models, artists, accountants, financial planners, photographers, animal behaviorists and zookeepers to name a few. This diversity shows us that the love we have for animals permeates beyond our careers and identity.

It is part of our soul to seek harmony with nature.



The party started with the opportunity to meet some of our Ambassador animals. Our **Ambassador wolves** were there to wow the crowd with their striking presence and of course the wolf pup supplied plenty of humor! Howie Savige brought Ambassador **Mohegan** (wolf/dog), Ashley Greaves brought Ambassador **Teddy Bear** (wolf/dog) and Melinda Sargent brought baby **Novi** (Ambassador wolf/dog in the making) through our collaboration with Mark Klemperer. **Foxes**, Yes, we had our Ambassador Foxes from Siberian Cupcakes partner Amanda Godin. Ambassadors **Ishy Squishy**, **Soul**, and **Chudo** gave most people there an opportunity to interact with a fox in a way they had never done before. People were amazed at

how much interaction they could have with them.

Archie, our adopted **New Guinea Singing Dog**, did amazing on his first Ambassador role representing the **Singers** and **primitive dog breeds**. Of course, a canid center cannot call themselves a canid center without man's BFF and our 10 yr old adopted **GSD**, **Betty** showed everyone the calmness, love, support, and connection that the domesticated dog provides to humans.



Dave shared some information on the a current theory on dog domestication and how we need to do more to treat all canids with respect and dignity and value their lives. He also talked about the focus and goals on the [JAB Canid Education and Conservation Center](#). And of course there was pizza and beer and super yummy Cupcakes from Little Cakes Cupcakes Kitchen. The night ended with an after party for those taking things to the wild side



at Arcana Brewing who were gracious enough to host us for this event.

We want to thank Pizza Port at Bressi Ranch and Arcana Brewing for hosting our first Party!!



AMBASSADOR CORNER

Our featured Ambassador for issue 1 is Sophia. Sophia is our Russian domesticated fox. She is 4 years old and her color is Georgian White. Our interest in the Russian domesticated fox program was to further explore their appropriateness for search and rescue work and as animal assisted therapy animals. With that goal in mind, we imported Sophia and Boris (also a Georgian White color).



Nickname: Sopho

Favorite Food: Watermelon

Personality trait: TALKATIVE



HOW CAN YOU HELP

by Ambassador Archie

One of the questions we consistently receive is “How can I help”? Well, we are glad you asked. Starting a non-profit animal conservation center takes A LOT of work. So where are we and how soon can we open our doors? We have purchased the property in Santa Ysabel, CA and started the fencing and development for the center. What do we need?

- * Financial contributions
- * Labor: We need people who can help fence, landscape, construction
- * Donations of equipment: fencing, construction materials, landscaping items, etc
- * Social media experts to help us get the word out and assist with advertising
- * Fund raising: if your skill set is fund raising, we need you!!
- * Increase our visibility: Are you following us on social media?? Facebook, Twitter, Youtube and Instagram: Siberian Cupcakes. Instagram: JABCECC. Follow us and share our posts with your friends and family.

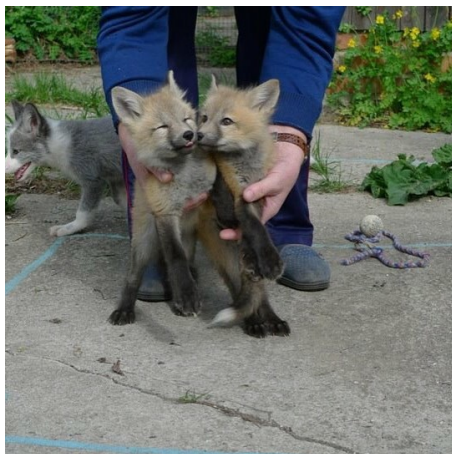
Go to www.jabcecc.org and hit Support. We also have an apparel line found at www.foxappeal.us. All proceeds from sales go to the JABCECC. If you are an artist or know one who can donate designs for apparel please let us know.

DOG DOMESTICATION

Have you ever wondered how that wet nosed fuzzy friend sitting next to you came to be? Dogs truly have a unique relationship with humans unlike any other animal. They are our friends, our servants, our protectors and much more. The dog was the first animal to leave the wild and enter into a unique relationship with man called domestication. Scientists are not exactly certain when this happened but the available evidence points to a time around 15,000 to 30,000 years ago. There are some researcher that suggest a time even further back. The exact circumstances by which a wild animal would leave a niche which it had inhabited for many years and enter into this relationship with man is not fully understood. Researchers have various opinions on how this might have happened. The most common thought is that the dog descended from the Grey wolf. Perhaps early man found some abandon newborn wolf puppies and could not resist their cuteness.



As these wolves grew up, the ones that were the most tame stuck around and resisted their natural urge to eat their captors, the others were cast out. When these animals grew larger our ancestors found that the wolves were useful in helping us hunt and ward off predators. After many years of only allowing the most friendly animals to breed they became more friendly and began to look like dogs. This change in appearance while selecting for tameness has been confirmed by the Russian fox experiment.



Some scientists reject this conjecture as they feel wolves were far too dangerous for early man to risk bringing into their lives. They feel that wolves just started hanging around man as we started to generate garbage for them to forage through. The wolves that were the least afraid of man and perhaps the least aggressive could be found closer to the settlements and would have gotten the “best” garbage and therefore would have been the most likely to survive and pass on their friendly genes to future generations. Again, some scientists say this scenario is not possible as the earliest remains that are believed to be from a dog come from a time before man was living in permanent settlements and therefore we would not have large garbage dumps. The latest thinking on this subject is perhaps the dog did not descend from the Grey wolf at all, but that the dog and Grey wolf have a common ancestor. This common ancestor would have been smaller than the Grey wolf and therefore not quite so dangerous to have around. Recently, a rib bone has been found in Siberia from an animal that may be this common ancestor. This animal is genetically half way between a Grey wolf and a dog. Radiocarbon dating has shown that this animal lived about 30,000 years ago. This was a time when glaciers were advancing southward. Perhaps some of these animals followed groups of humans as they made their way south to avoid the glaciers. Once these animals were geographically isolated from other members of their species they would have evolved independently, maybe into a dog. The members of this species that stayed behind would eventually evolve into the Grey wolf. Still other researchers believe the dog may have evolved independent from people and then came into association only to fill a niche created by man. However dogs became domesticated we should be glad they did. The close association between man and dog has allowed both species to be the most successful animals on earth. For those who are interested in learning more about this topic, there are several excellent books that go into much greater detail.

The Genius of Dogs Brian Hare

Dawn of the Dog Janice Koler Matznick

Dogs: a New Understanding of Canine Origin, Behavior and Evolution Raymond Coppinger





YOU OUGHT TO BE IN PICTURES

The JABCECC was honored to be a part of photoshoots with some beautifully talented ladies. Dorian Dane and Kota Wade collaborated with us to create these magical photos by photographer: **Anabel Dflux**: www.DeliquescenceFlux.com. Sophia Miacova, a model and animal lover collaborated with the JABCECC to create some truly beautiful photos by Kingston Photography. We couldn't have been more thrilled.

Our Ambassador animals would be more than happy to collaborate with persons in the film, photography, non-profit, corporate space.



WHY JABCECC?

Who is Judith A Bassett and how is she connected to the Center?

Judi is Dave's mother who recently passed away. Judi was known for being fearless. She spent the majority of her life breeding, training, and rehabbing dogs. She was a AKC judge in obedience, bred GSDs for companion, SAR, and K-9, and was known as the last resort when someone had an aggressive dog that had no options left except euthanasia. Sure enough within 2 weeks, the previously called hellhound was giving her kisses on her face! It was all a matter of finding a way to "communicate" with the dog and then teaching its owners to do the same, she called it "dogese". Through her unique abilities she was able to enrich the lives of many people by letting them fully experience the human/dog bond. Her mantra when someone said it could not be done was "WATCH ME"!! And by golly that 5 ft tall women did the unbelievable.

It is her love for canids and her ability to see something beautiful in every dog which is the reason the center is named in her honor. It is with the "WATCH ME" attitude that we move forward in creating a Canid center like no other.

Canid factoid of the month

Have you ever heard of a Dhole?

The Dhole (pronounced DOLE) is a canid native to Central, South and South-East Asia. It is also called the Asiatic wild dog or the whistling dog. The dhole is the only member of the genus Cuon, which makes them distantly related to domesticated dogs. They are highly social canids, being found in packs with up to 100 members. They are incredibly skilled hunters which, unfortunately, sometimes puts them in conflict with humans. As such, they are critically endangered. If you ever



hear someone talk about conserving a dhole, please remember that this is not just a brand of pineapple, but a remarkable canid that has been around for millions of years.

Contact:

Website: www.jabcecc.org

Fox Appeal: www.foxappeal.us

Facebook: <https://www.facebook.com/Siberiancupcakes/>

Instagram: <https://www.instagram.com/jabcecc/>

Instagram: <https://www.instagram.com/siberiancupcakes/>

foxes@siberiancupcakes.com

760-224-9392

Santa Ysabel, CA