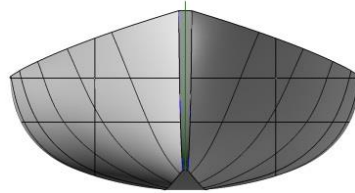
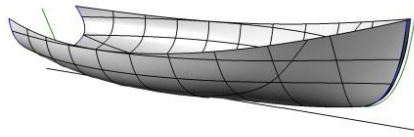


Design Project: Calendar Islands Yawl 18

By Clint Chase

boatkits@gmail.com

WWW.ClintChaseBoatbuilder.com

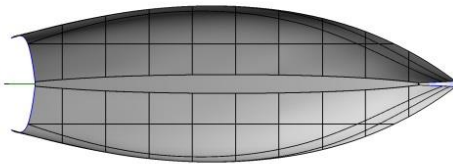


CIY Specs

LOA ~18'

Beam ~6'2"

Hull Weight < 250lbs



- Hull above will be modified into more of a light daysailer hull form with more freeboard, bearing aft for sailing, but enough dreadrise and flare forward for cutting through choppy water.
- Features that will be retained: narrow flat bottom for beaching, yawl rig.
- Capacity will be up to 4 people or two people and gear
- Bullet proof, plywood stitch and glue bottom (glassed) and lapstrake topsides 9mm ply (not glassed) would look much like the CIY 16 but with one additional plank
- Foredeck and a coaming to make it a dry boat or it can be built open for sail and oar version.
- Lug-yawl rig or gaff-sloop configurations w/ centerboard
- Auxiliary power by oars or small OB motor set in a well aft or on transom (TBD)
- Motor 2.5hp is aux. Power with oars stowed out of the way
- Interior layout with side benching and a thwart across to stabilize cb trunk and provide a spot to row
- Side benches aft and forward compartment provide positive flotation
- Custom designed dodger for daysailer version will be made to fit coaming and provide a dry, warm space when the weather is not great

Price to bring design project to fruition as a set of plans and/or kit: \$2,750.00

The final plywood kit will retail for about \$3,500.00



Figure 1: The CIY 18 will be similar to the CIY16, but only bigger