

# NY UPSTATE PLANNER



American Planning Association  
New York Upstate Chapter

Making Great Communities Happen

A Publication of the New York Upstate Chapter of the American Planning Association

April 2014 | Volume 28, Issue 1



PAGE 2

## Ten Years of the Michael J. Krasner Memorial Scholarship

*The scholarship honors Mike Krasner's dedication to the profession and education in Western New York, as well as his commitment to the American Planning Association.*

## Also Inside...

### Southern Tier Section Report

The 2013 Annual Report from the Southern Tier Section.

PAGE 4

### Western New York Section Report

The 2013 Annual Report from the Western New York Section.

PAGE 4

### Genesee/Finger Lakes Section Report

The 2013 Annual Report from the Genesee/Finger Lakes Section.

PAGE 5

### Central New York Section Report

The 2013 Annual Report from the Central New York Section.

PAGE 7

### New SEQR Forms

The new forms are now available.

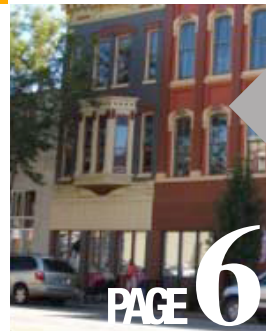
PAGE 9



## Empire State Future

A Project of the Tides Center

PAGE 7



PAGE 6

## POP QUIZ!

An excerpt from *The Myths of Main Street*: exploring developmental history of the American small town in its heyday (1870-1930)

## Recharging in the Electric City

A summary of the joint American Planning Association/American Society of Landscape Architects Chapter Conference held in Schenectady in 2013



PAGE 8



PAGE 3

## PRESIDENT'S REPORT

The 2014 Annual Report from Ellen Parker, Chapter President, including a discussion of her outlook for 2015.



# Ten Years of the Michael J. Krasner Memorial Scholarship



**Michael Krasner served for more than 25 years in the public, private and academic sectors until his passing in 2004.**

In addition to serving as Senior Planner with the Erie County Division of Planning from 1986 until his passing in 2004, Mike also served as an adjunct professor in the University of Buffalo Urban Planning Department. He volunteered as a member of the Town of Cheektowaga Conservation Advisory Committee and the Stiglmeier Park Steering Committee. Serving an active role on both the Western New York Section and the Upstate New York Chapter of APA, he received the Distinguished Service to the Section Award in 1994 and the Distinguished Leadership award in 2002.

## The Scholarship

The Michael J. Krasner Scholarship is a competitive award for a graduate student in the Urban and Regional Planning Program at the University at Buffalo. The scholarship is awarded to the student that best exhibits his/her commitment to planning issues in Western and Upstate New York and who best reflects the ideals of Mike Krasner.

The Scholarship honors Mike Krasner's dedication to the profession and education of planning in Western New York, as well as his commitment to APA. The Scholarship is funded through the generous support of WNY Section and Upstate NY Chapter APA members. Thanks to our members, we have been able to keep Mike's memory alive through awarding the scholarship for the past ten years. With your continued support, we hope to continue the scholarship on to the future.

In honor of the tenth anniversary of the scholarship, we have tracked down the ten winners for a "where are they now" update.

## The Winners



### 2004 - Eric Ameigh

Eric currently works as Senior Project Manager in the City Manager's Office in Boulder Colorado. He has coordinated the City of Boulder's involvement in a major international bicycle race (the USA Pro Cycling Challenge), served as the co-pilot for the update of the Fire Department's master plan, has been involved in a handful of organizational development initiatives.



### 2005- Christopher Parezo

Christopher works at Civitas in Denver, Colorado, where he is the Urban Design Leader and Project Manager. In 2012, Chris led his team to win an urban design competition to transform 400 acres into a new transit-oriented, mixed use neighborhood adjacent to rail in Denver. Chris will also be leading the Civitas team in Kabul New City, a development project the Afghan Government is undertaking to help stabilize the country, designing the urban framework and open space system that will guide the development of a new city center.



### 2006 - Mark Rountree

Mark is a Planner with the Erie County's Department of Environment and Planning. Mark has been involved in the demolition, remediation and redevelopment of the Spaulding Fibre Superfund Site in the City of Tonawanda, assisted in the production of the Black Rock Canal Park Feasibility Study, and is currently working on physical improvements to the park in the Black Rock/Riverside neighborhood of Buffalo.



438 Main Street, Suite 700  
Buffalo, NY 14202  
T 716.854.1181 F 716.854.1800  
www.hatchmott.com

**Consulting Engineers and Planners providing studies, design, and construction inspection services for:**

- Highways & Bridges
- Rail & Transit Systems
- Tunnels & Underground Construction
- Facilities & Infrastructure
- Site Development
- Airports
- Pipelines
- Environmental Remediation
- Solid Waste Management
- Water & Wastewater
- Information Management
- Contract Operations



# President's Report

*Ellen Parker, AICP*



***As I enter into my final year as President, I'd like to thank my fellow Chapter Board members and the Section leadership, for volunteering to run our programs and activities. I am extremely grateful for all their hard work.***

*Ellen Parker is a planner at Wendel Companies and is based in the Buffalo, New York office.*

We hope that Spring has finally arrived as you are reading this newsletter. Planning is underway for our conference in Rochester. Please plan to join us at the Memorial Art Gallery from September 17th through 19th. The conference is a great way to meet with other planners, explore the city and learn about current trends and topics. This year, the program committee is hoping to have a stronger focus on practical skills for planners. All sessions will be submitted for CM credit, and there will be sessions on law and on ethics.

In 2015, we are hosting a Regional Conference for APA Region 1, which includes the New York Metro, Massachusetts, Connecticut, Rhode Island, Northern New England, Pennsylvania and New Jersey Chapters. It will be held in Saratoga Springs at the City Center from June 24th – 26th. This is the first time there has been a Region 1 conference since 2002, when it was held in Providence, Rhode Island. We are excited to be the hosts for this event, which will draw planners from across the northeast. Please note, because of the Regional Conference, we will not have a fall conference in 2015. The Western New York Section will host the Fall conference in 2016.

We just completed our first year of offering “Chapter-only” memberships. It is a great option for retired planners, people in allied professions and planners who are not interested in full APA membership. At only \$75 per year, it is an affordable alternative, and it provides a number of benefits, which are listed on our website. Please let your friends and colleagues know about this option.

You may have noticed regular updates from the Chapter, letting you know about new jobs, projects and other topics of interest. These updates are generated automatically by our website. Please go to your profile with national APA (the

“My APA” button at [planning.org](http://planning.org)) to make sure your email address is accurate to make sure you receive the newsletters and other communications from the Chapter.

I will be attending the Chapter Presidents Council (CPC) meetings held during the conference in Atlanta. These CPC meetings are an opportunity to hear what other Chapters are doing, and to communicate our members' concerns to national APA. One topic will be the role of the APA President, now that Paul Farmer is retiring. Please feel free to contact me about any questions or concerns you have.

***I look forward to seeing you all in Rochester. As always, if you have any questions, comments or even complaints, please feel free to let me know!***

Chapter elections for new officers will be held over the summer. We are starting to pull together our slate of officers now. Please submit any nominations to me or Judy Breselor. We are also looking for volunteers to get involved. Opportunities include writing articles for this newsletter, helping with the conferences, and getting involved with legislative policy issues.

In closing, I'd like to thank my fellow Chapter Board members and the Section leadership, for volunteering to run our programs and activities. Our Chapter and Sections do a lot: newsletters, websites, events, lectures, tours, legislative advocacy, student mentoring, the annual conference, the awards program, the Krasner scholarship, maintaining financial records, etc. As I enter into my final year as President, I am extremely grateful for all their hard work. ●





## Western New York Section Report

Angela Keppel, AICP, WNY Section Director

### The Western New York (WNY) Section hosted a several events over the course of 2013.

#### July 2013

The WNY Section hosted a walking tour of the Larkin District, a newly revitalized business center just outside of Downtown Buffalo. City Planner Chris Hawley and Developer Howard Zemsky led the tour, which was well attended and enjoyed by all.

#### November 2013

WNY Section, along with the University of Buffalo Graduate Planning Student Association (GPSA), hosted our biannual student/professionals mixer. To put a twist on our mixer, we used a speed networking format, which was fun for all in attendance.

#### December 2013

The WNY Section hosted a holiday happy hour for planners. Additionally, through the generous support of WNY Section and Upstate Chapter APA members, the WNY Section successfully raised \$1530 during 2013 towards the Michael Krasner Memorial Scholarship! ●

## Southern Tier Section Report

Tom Knipe, Southern Tier Co-President with Jennifer Yonkoski

### New bylaws and updated Section programming is on the horizon for the Southern Tier Section.

Following the successful leadership of the 2012 Chapter Conference in Corning, the Southern Tier Section reorganized in 2013. We adopted new bylaws, elected a new Section Board and are gearing up to activate new Section programming for the Southern Tier in 2014. We are energized to explore an expanded engagement with the Cornell University Department of City and Regional Planning (CRP) and Cornell-affiliated student and alumni groups including the Organization of Cornell Planners and CRP Connect.

Do you have ideas for educational programming, professional networking, event co-sponsorship, or other things you would like to see in the Southern Tier Section's 2014 work plan? Want to organize a Chapter event in Broome, Chemung, Cortland, Delaware, Otsego, Schuyler, Steuben, Tioga or Tompkins County? Drop us an email. ●

✉ [tknipe@tompkins-co.org](mailto:tknipe@tompkins-co.org)

✉ [jyonkoski@co.broome.ny.us](mailto:jyonkoski@co.broome.ny.us)

**Bergmann**  
associates  
architects // engineers // planners

our people and our passion in every project

28 E. Main St. | 200 First Federal Plaza | Rochester, NY 14614





# Genesee/Finger Lakes Section Report

Katie Evans, GFL Section Director

**For the Genesee/Finger Lakes Section, a year packed full of activities, combined with planning for the 2014 conference has made time fly.**

Did 2013 seem to go by really fast for anyone else? In a profession focused on long-range planning, application deadlines for agendas a month or more in advance, deadlines, drop-dead deadlines, and emergency deadlines with the addition of a flurry of night meetings it is no wonder the year seems to go by fast!

Nonetheless it is my pleasure as G/FL Section Director to share the following highlights with you:

- Annual meeting and social gathering in February
- *Chapter-Only Membership promotion resulted in nine new members.* While we are still working to attract more individuals unable to commit to a full APA membership, G/FL is leading the pack with over half of the NYU Chapter Only Members in our Section. I hereby issue a challenge to the other Sections to try to surpass our efforts!
- *Sponsored the Reshaping Rochester Lecture Series.* In its 8th year five lectures were held January through June. The series is made possible by the coordination of the Rochester Regional Community Design Center and many generous donors. See the NYU APA March 2013 newsletter for a list of impressive presenters. Audio of past lectures is available <http://rrcdc.org/listen.html>.
- *Rochester Public Market Tour and overview of the Market Master Plan in June.* If you are in the region and haven't visited the Rochester Public Market, you won't believe the activity going on in this amazing space that dates back to 1905! It is truly something to see in person. The market now includes vendors, restaurants, loft office space, band on the bricks, food truck rodeos, garage sale days, an ATM that looks like a British phone booth and so much more. Click on the following link for more information: <http://www.cityofrochester.gov/article.aspx?id=8589936780>
- Various meetings throughout fall to prepare for the 2014 NYU APA Conference

Transitioning into 2014, under the direction of Lisa Cheung (Passero Associates) and David Kruse (SRF & Associates),

we are working very hard to plan an invigorating Chapter Conference. This year's theme will be *Practical Knowledge for Practical Planning*. The conference will be held at the Memorial Art Gallery in Rochester September 17th-19th. The reception will be held at the Rochester Museum and Science Center. If you have any suggestions or comments for the planning committee, please don't hesitate to e-mail them to David at [dkruse@srfa.net](mailto:dkruse@srfa.net). We want to hear from you!

In closing, the Section has one again sponsored the 9th Annual Reshaping Rochester Lecture Series. Under the theme *In the Trenches: A Celebration of Grassroots Efforts*, the series kicked off with Jeff Speck speaking on walkability in January. Monthly lectures will be held through May. Visit <http://rrcdc.org/reshapingrochester.html> for details. ●

**LABELLA**  
Associates, P.C.

Engineering  
Architecture  
Environmental  
Planning

*More than \$420 million in funding obtained on behalf of our clients!*

Grant Applications & Administration

Comprehensive & Area Plans

Agricultural Protection Plans

Zoning & Subdivision Regulations

Downtown Revitalization

Economic Development Strategies

Brownfield Opportunity Areas

Environmental Reviews

Energy Project Review & Permitting

Energy Efficiency / Conservation  
Plans & Grants



[www.labellapc.com](http://www.labellapc.com) | (585) 454-6110

Stuart I. Brown  
A LaBella Company

Relationships. Resources. Results.



# POP QUIZ!

## *The Myths of Main Street*, by Dr. Kirin J. Makker

**That's right, a pop-quiz (by the way, you can relax, there is only one question on this pop quiz)**

In lectures on my book research, I have occasionally started my talks with a blank slide that says “pop quiz” (I stole this brilliant idea from a colleague of mine when I was teaching at Smith College, in Northampton, MA and I have shamelessly employed it on many an occasion. I don’t care who you are or if you’re 75 or 18, if someone standing at the front of the room says “pop quiz!” you find yourself uncontrollably attentive).

So here we go.

**Question #1: Where are we?**



Typically everyone is quiet at first and I have to egg them on. “Are we in one town or two or four? Are we in real towns or at Disney World? Are we in the South or Northeast? Are we looking at towns that were built in the 19th century or 20th century?”

After a fair amount of guessing from folks, I throw up the next slide (roll-over the photos to see the answers).

And (hopefully) my point is made: Main Street has a “visual vocabulary” that spans every region of the United States. This is just what small town America looks like! It’s got highly ornamented two- and three-story buildings. There are clean sidewalks with awnings to walk under. The road is nicely graded. There are streetlamps, the occasional park bench, trash receptacles, and maybe a finial here and there. There are leafy street trees.

### About the Author

Kirin holds an M.A. in English Language and Literature (UMass Amherst), an M.Arch. (UMaryland College Park), and a Ph.D. in Regional Planning (UMass Amherst). At Hobart William Smith (HWS) she teaches architectural design, visual communication, and American planning history. Before HWS, she taught at Smith College in Northampton, Massachusetts (2004-2008).

Reprinted with permission from *The Myths of Main Street: exploring the developmental history of the American small town in its heyday (1870-1930)*



<http://mythsomainstreet.wordpress.com/>

Laberge  Group

Planning • Economic Development  
Public Outreach • Grant Writing & Administration  
Parks & Trails • Waterfront Development  
Engineering • Architecture • Surveying

Offices in Albany & Utica, New York  
(518) 458-7112 • (800) 755-2237

[www.labergegroup.com](http://www.labergegroup.com) • [clientservices@labergegroup.com](mailto:clientservices@labergegroup.com)

{Continued on page 10}



# Central New York Section Report

*Dana Crisino, CNY Section Director*

The CNY Section has been in a bit of a stagnant stage for some period of time now. While there are many planners working and living in the CNY area, there is a great geographic distance that exists between nodes of planners and population. This has proven to be a lynch pin in activating the section and providing professional resources to our planners in the area.

The direction the CNY section is looking to go is of more an electronic-based group that provides a forum for communication and networking. It is still assumed that in-person events and meetings will take place. As we look to other Sections and see the activities, resources and connections they bring to area planners, we wish to bring the same to Central New York. The goal is to progress the CNY Section in 2014 to an active status and begin to reconnect the planners of the region. Any CNY planners reading this that wish to help with the activation, please let me know! ●

 [drcaicp@gmail.com](mailto:drcaicp@gmail.com)



*Common sense approaches to complex problems*

[www.smalltownplanning.com](http://www.smalltownplanning.com)

**PARSONS  
BRINCKERHOFF**

[www.pbworld.com](http://www.pbworld.com)

Mark Tytko  
Buffalo Office  
50 Lakefront Blvd.  
Suite 111  
Buffalo, N.Y. 14202  
716 - 853 - 1220

**Land Use Planning -  
Transportation Planning -  
Environmental Planning -  
Public Involvement -  
Strategic Consulting -  
Placemaking -**

# Empire State Future Update

*Evan Michael Lowenstein, co-founder and consultant*

Founded in 2008, Empire State Future works to actualize the principles, policies, and practices of smart growth. The organization's legislative successes have included the passage of the Public Infrastructure Policy Act, which instructs state agencies and authorities to direct infrastructure dollars to smart growth projects and not to the costly, location-inefficient developments we call sprawl; the state Complete Streets Law; and the state land banking authority legislation. In addition to its advocacy work, we strive to be the go-to resource in New York for land use and development information and inspiration.

**Check out ESF's website and sign up for email updates:**



[www.empirestatefuture.org](http://www.empirestatefuture.org)

**And don't forget to join our social media communities!**



**M.J. Engineering and Land Surveying, P.C.**

Site / Civil Design  
Structural Design & Inspection  
Environmental Design  
Water / Wastewater Engineering  
Construction Inspection  
Architecture  
Planning  
Survey & Mapping  
3D Laser Scanning

1533 Crescent Road, Clifton Park, NY 12065  
518.371.0799 • [www.mjels.com](http://www.mjels.com)



**Planning & Development  
Consultants**  
P.O. Box 824  
Rock Hill, New York 12775  
TEL/FAX: 845-796-4500  
Cell: 845-807-2994  
[planit@hvc.rr.com](mailto:planit@hvc.rr.com)  
[www.planitmainstreet.com](http://www.planitmainstreet.com)

**Alan J. Sorensen, AICP**  
President

- Comprehensive Planning
- Cultural & Heritage Planning
- Economic Development
- Grant Procurement
- Main Street Revitalization
- Visioning & Strategic Planning
- Zoning & Land Use Planning

*Preserving the Past. Defining the Future.*





# Recharging in the Electric City

## A summary of the 2013 Chapter Conference

**Conference highlights included twenty-eight sessions and six mobile workshops, featuring over 80 speakers, geared around three themes.**

Over 255 registrants and speakers gathered for the APA+ASLA Upstate Chapter Annual Conference Recharging Communities Through Planning & Design on September 25-27, 2013 in downtown Schenectady, NY. Our conference venue, the historic Proctors Theatre, provided a unique setting for three days of sessions and networking and the APA Upstate Chapter Awards luncheon.

Conference highlights included twenty-eight sessions and six mobile workshops, featuring over 80 speakers, geared around three themes: the Power of Water to carve and connect our landscape, Community Transformers that contribute to the revitalization of our communities, and Transportation Conduits that serve to enhance our land use and development patterns.

The Conference Committee was very pleased to see that approximately 40 students from several Upstate New York universities participated in the conference. We offered a special incentive for students to attend by providing a modest \$50.00 registration fee, and an opportunity to reduce that fee to \$25.00 by volunteering for three hours of work at the conference. Approximately twenty students from the University at Albany took advantage of this opportunity and provided crucial volunteer assistance to conference operations.

One of the conference highlights was the Student Poster Showcase. The Conference Committee invited universities to each submit two student projects. We received nine posters



**Proctor's Theater**

IMAGE: Grems-Doolittle Library Collections

Keynote speaker, Joseph Minicozzi AICP, provided a fascinating presentation illustrating new ways to think about urban forms and development. In addition to the detailed descriptions of the analytical tools he has developed, and which are being utilized around the country, he shared humorous insights into how a transplanted Upstate New Yorker from Rome, New York is now acclimating to his adopted home in North Carolina.

Conference attendees who had not been to Schenectady for many years remarked on the transformation of this post-industrial city into a lively mecca for arts and cultural activities within a vibrant downtown commercial corridor.

from five different degree programs. Winners were selected by the people who voted (via private ballot) at the Student Showcase. The two winning poster submissions were:

- *Planning Across Generations: Shifting the Planning Paradigm* - Cornell Planning Students Danielle Dunn, Xiaomeng Li, Victoria Long, Haylee Madfis, Travis North, Abigail Rivin, and Danai Zaire.
- *QR Marsh* - SUNY ESF Landscape Architecture Students Ben Boisclair and Ariana Muca.

{Continued on page 11}



# The New SEQR Forms are Here!

*The NYSDEC has adopted new Environmental Assessment Forms*

On January 25, 2012, the New York State Department of Environmental Conservation (DEC) adopted new “Short” and “Full” Environmental Assessment forms (EAFs). The new EAFs became effective on October 7, 2013.

The new forms are designed to work with the new Short-EAF and Full-EAF workbooks and the “EAF Mapper” software program - which the DEC expects will improve and modernize environmental impact analysis and the SEQR process.

**Here are frequently asked questions regarding the new forms, workbooks, and the EAF Mapper software program:**



[www.dec.ny.gov/permits/93240.html](http://www.dec.ny.gov/permits/93240.html)

## Comprehensive Planning

*Having a certified planner on your team offers a level of reassurance that your project will meet today's needs, and those of the future. To learn more, call us at (607) 358-1000 or contact us by email: [Barbern@hunt-eas.com](mailto:Barbern@hunt-eas.com).*

Nicolette Barber, AICP

**HUNT** ENGINEERS  
ARCHITECTS  
SURVEYORS

607 • 358 • 1000 / [www.hunt-eas.com](http://www.hunt-eas.com)

## Ten Years of the Michael J. Krasner Memorial Scholarship {continued from page 2}



### 2007 - Arlene Rodriguez

Following graduation, Arlene moved to Meadville, Pennsylvania to work with the Crawford County Planning Commission as a Planning Assistant. In January 2012, Arlene was promoted to become the Assistant Planning Director for the Commission. Arlene reviews new land developments for the county, as well as reviews and creates ordinances for the 51 municipalities in Crawford County. Arlene also takes on the lead role of maintaining and developing the GIS database for the County. Arlene also serves as Membership Chair for the Crawford Area Young Chamber of Commerce (CAYCC).



### 2009 - Christopher Schaut

After graduating in 2010, Christopher spent a year working at the University of Rochester. In 2011, he moved to New York City in search of professional opportunities. Christopher currently works as a Research Analyst with Jones Lang LaSalle. Jones Lang LaSalle is a global real estate services and investment management firm. In his position, he tracks trends in the Manhattan commercial office market. Christopher is a member of the New York Metro APA chapter.



### 2008 - Brittany DiLeo

Brittany works with the NYSDEC at the Reinstein Woods Education Center in Cheektowaga. Brittany works as an educator, focusing on leading guided tours and also as Invasive Species Coordinator, mapping invasives and writing management plans for controlling harmful plants. Brittany is currently working through Reinstein Woods under an EPA grant that allows her to train teachers in methods of incorporating the Great Lakes and Buffalo River into their curriculum. She has presented her work at local, state and national conferences.



### 2010 - Tyler Mekus

Tyler works for LP Ciminelli as a Project Manager, working on renewable energy projects across New York State. Recently, he has been involved with the redevelopment of the Erie County Medical Center campus. Beginning this May, he is serving as the lead Project Manager for LPCiminelli on the build out of the upper floors of the Kidney Dialysis Center of Excellence, to include new medical office spaces and operating rooms.

{Continued on page 12}



# POP QUIZ!

{continued from page 8}

Then I tell them that all these pictures were taken in the 1990s or thereabouts. If we look at pictures of small towns from the late 1800s, we might see something different:



New Ulm, MN c. 1890



Petroleum, PA c. 1870

Whoaa. Where's all the quaint prettiness? Maybe we don't know that much about Main Street.

My research looks at how Main Street happened — how it was physically built, assembled, styled, re-organized, and cleaned-up. Digging around in archives has convinced me that we don't know very much about the developmental

history of Main Street, that we tend to accept some givens: it was locally made, (“no corporate Wall Streeters on Main Street!”), conservative (“Why change? It’s always worked! We don’t need crazy new ideas from those city folk fussing with our way of life!”), and autonomous (“We look after our own! No outside influence here!”). Along the way, Main Street, the physical place, became an archetype of American values. Main Street is a physical place, but it’s also a community ethos.

So what? What’s the big deal you ask? (and more to the point, why am I digging around in archives about the developmental history of small town America?)

Well, in my profession (that’s architecture and urban planning), this Main Street imagery reigns a bit unquestioned in design proposals and policies. And well, I have a problem with what feels too much like blind faith in a nostalgic idea about small town life. I think we planners need to get more informed about what we’re referencing in our proposals — we have tended to recreate small town America in suburbia, as if the community ethos we associate with Main Street will magically grow from the ornamented buildings and streetscaping.

Hold on a minute! (you say) You think planners are vacuous automatons, employing small town imagery without realizing that they are recreating a place from the past?

No. Of course not. I’m a planner too, you know. And I personally LOVE ye olde small town Main Streets. I just think that the small town has more to offer contemporary planning and design than superficial imagery.

I believe that if we know a fuller story about what made the place we so admire and idolize, we will actually see that we can’t accept it at face value — that we will observe Main Street, the archetype, with a keener understanding of how complex a place it is and in our understanding of its complexity, see it as a place to learn from but not mimic. We will see that Main Street was made because it was open to unconventional and innovative approaches to social governance, municipal planning, the importing and exporting of ideas. It developed with the cities during America’s great period of urbanization, not independently of it. Main Street occurred in concert with Wall Street. ●

highlandplanning

A certified WBE and DBE in New York State

Public Outreach  
Grant Writing

Commercial District Revitalization  
Research Management

Tanya Mooza Zwahlen, AICP  
Principal and Owner  
(585) 315-1834

8 Public Market  
Rochester, New York 14609  
www.highland-planning.com





# Recharging in the Electric City

{continued from page 8}

Our main conference reception found us all ONSTAGE looking out at the 2,646-seat theater, while we sampled fresh, locally sourced foods and were entertained by a member of the American Theater Organ Society playing popular show tunes on “Goldie” -- Proctors mighty Wurlitzer organ!

The Conference Committee procured fifteen exhibitors and seven business card ads, plus seven organizations or businesses that provided substantial in-kind services. All of these contributors were listed on the conference website and program. We owe a special thanks to the Capital District Regional Planning Commission, which provided pro bono services and oversight for our conference registration.

The Conference Committee was able to earn a modest profit for the Chapter and the Section by raising considerable revenue, trimming our costs, negotiating a considerable amount of in-kind services, and providing considerable hours of member volunteer labor. Several CDPA Section officers and members worked for over a year to prepare the conference: Marcia Kees, Tom Carey, Mark Castiglione, Kathy Ember, Rocky Ferraro, Steve Iachetta, Kate

Lawrence, Jim Levy, Don Odell, Sam Piper, Corianne Scally, Steve Strichman, Linda Trombley, and Adam Yagelski. Upstate Chapter officers Ellen Parker, Art Buckley and Andy Raus as well as Chapter Staff Consultant Tanya Zwahlen also provided assistance.

Our ASLA colleagues who worked with us in planning this joint conference included Andy Hart, Christine Colley, Ian Law, John Lutz, Mary Moore Wallinger, Nick Schwartz, Sue Steele, Art Traver, and Rick Rivers and Diane Chevron from The Rivers Organization.

The conference provided a total of 54.25 CM credits, with the opportunity for an AICP member to earn up to 13.75 CM credits.

We would like to thank everyone who participated and helped make our 2013 NY Upstate Chapter conference a rousing success! ●

*By Marcia O. Kees, APA Conference Chair*



**JOIN US**  
NY UPSTATE APA ANNUAL CONFERENCE  
Memorial Art Gallery  
Rochester, NY  
SEPTEMBER 17-19, 2014



# Ten Years of the Michael J. Krasner Memorial Scholarship {continued from page 9}



## 2011 - Tamara Wright

Tamara completed her dual degree in law and urban planning (JD/MUP). Tamara works as a Policy Coordinator for the Empire Justice Center, which is a statewide, multi-issue, multi-strategy public interest law firm focused on changing the "system" within which poor and low income families live. Her legislative and administrative advocacy efforts, focus on social service issues such as childcare and disabilities, consumer protection issues and health care. Tamara is licensed to practice law in the State of New Jersey.



## 2012 - Christina Farrell

Since becoming a Krasner Scholarship recipient in 2012, Christina has completed her Master's in Urban Planning degree. While in school, Christina served as an intern at the Buffalo Urban Development Corporation, working on planning projects related to the South Buffalo Brownfield Opportunity Area. She also worked as a Research Assistant under Dr. Daniel Hess, co-authoring a published article, report and textbook chapter (pending) on multi-modal transportation planning for evacuations. Christina's final project for graduate school was an open space preservation plan for the Town of Tonawanda.



## 2013 - Melanie Reimondo

Melanie is expecting to graduate in 2014, and is specializing in Community and Economic Development. Melanie is interested in seeing how neighborhoods which are currently underserved can be places for growth, change and development. She currently works as a Community Building with the Perry Choice Neighborhood as part of the AmeriCorps program. The program is working to develop the community to create a sustainable community within the Perry Choice Neighborhood through employment and revitalization. ●



Syracuse | Albany | Rochester | Ellenville | Newburgh | Watertown

1-800-724-1070

[www.BartonandLoguidice.com](http://www.BartonandLoguidice.com)

**New Urbanism**

Environment, Natural Resources & Energy  
Transportation Planning  
Latinos & Planning  
Small Town & Rural Planning  
Federal Planning  
Housing & Community Development  
Planning & Law  
PRIVATE PRACTICE  
Urban Design & Preservation  
PLANNING & THE BLACK COMMUNITY  
Regional & Intergovernmental Planning  
Economic Development  
TECHNOLOGY  
GAYS & LESBIANS IN PLANNING  
Sustainable Communities

**Planning & Women**

**COUNTY PLANNING**  
City Planning & Management  
International

[www.planning.org/divisions](http://www.planning.org/divisions)

**JOIN AN APA DIVISION**