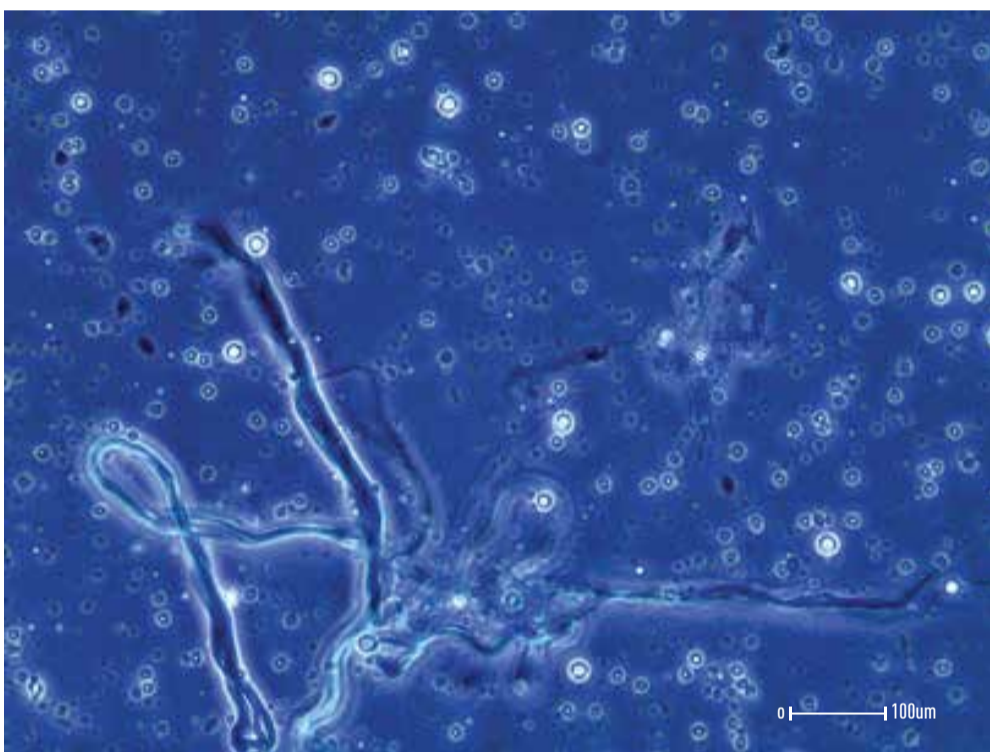


# Stem Cell Therapies Are Not All the Same...

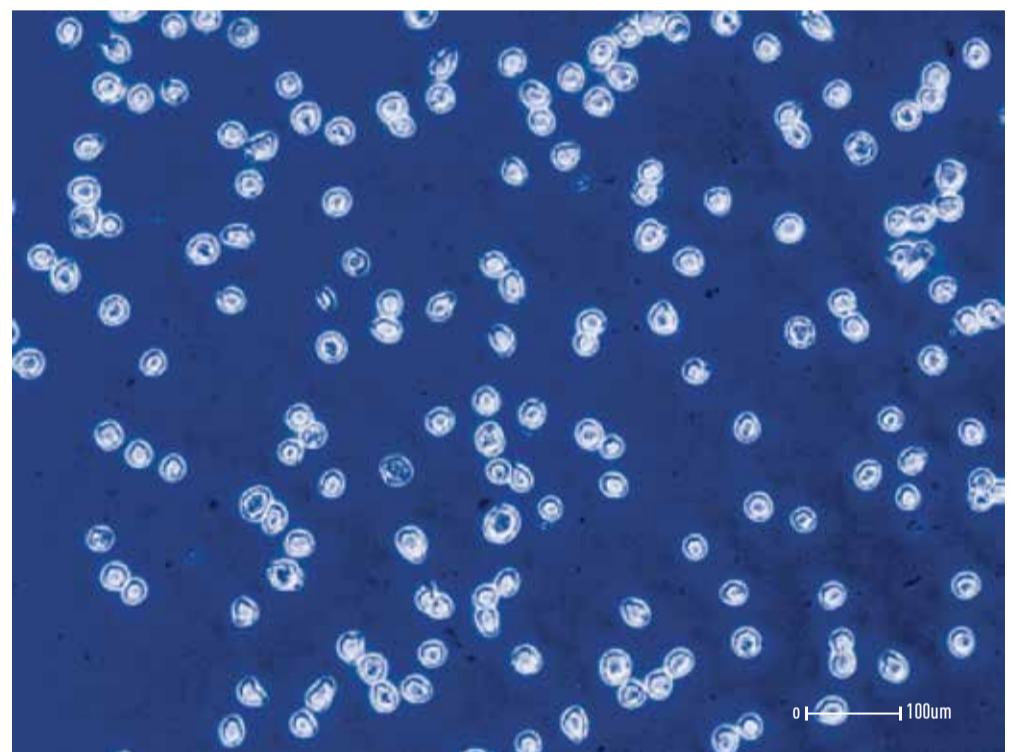
At CTSL we believe that **cultured stem cells** provide the highest standards of care for veterinary patients and offer significant advantages over same-day, in-house stem cell systems.

## Photomicrographs taken under Phase Contrast (viewed after trypan blue staining)

Stromal Vascular Fraction SVF same-day (Day 0) showing residual collagen and capillary fragments



Mesenchymal stem cells (MSCs) after 5 days in culture



Key: Bright cells = living cells

Dark blue cells = dead cells

Smaller cells = cell debris and RBCs

## Advantages of using culture-expanded stem cells in your practice

### Consistent Dosing and Quality

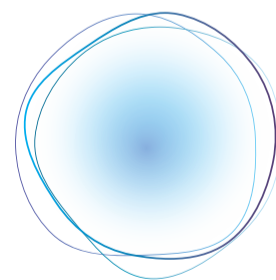
- CTSL cultured therapies contain:
  - > 90% MSCs with > 90 % viability at the point of care
  - SVF therapies contain < 5 % viable stem cells
  - BMAC therapies contain ~ 1% viable stem cells
- Stem cell yield and viability is confirmed for each injection
- Therapies are produced by dedicated experienced cell culture scientists - in a VMD authorised facility

### Manage your Clients' Expectations

- A single tissue harvest produces a lifetime of treatments – cells for life from as little as 5 gram of adipose tissue
- Convenience: stem cell injections are cryogenically frozen and stored until needed

### Protect your Patients' Safety

- Same-day therapies contain mixed cell types, tissue fragments and inflammatory cytokines
- Cultured stem cells are processed in sterile bio-safety cabinets inside hepa-filtered clean rooms
- AdiShot and StemShot undergo full sterility testing prior to release



**cell therapy** sciences  
Developing Regenerative Medicine for Vets