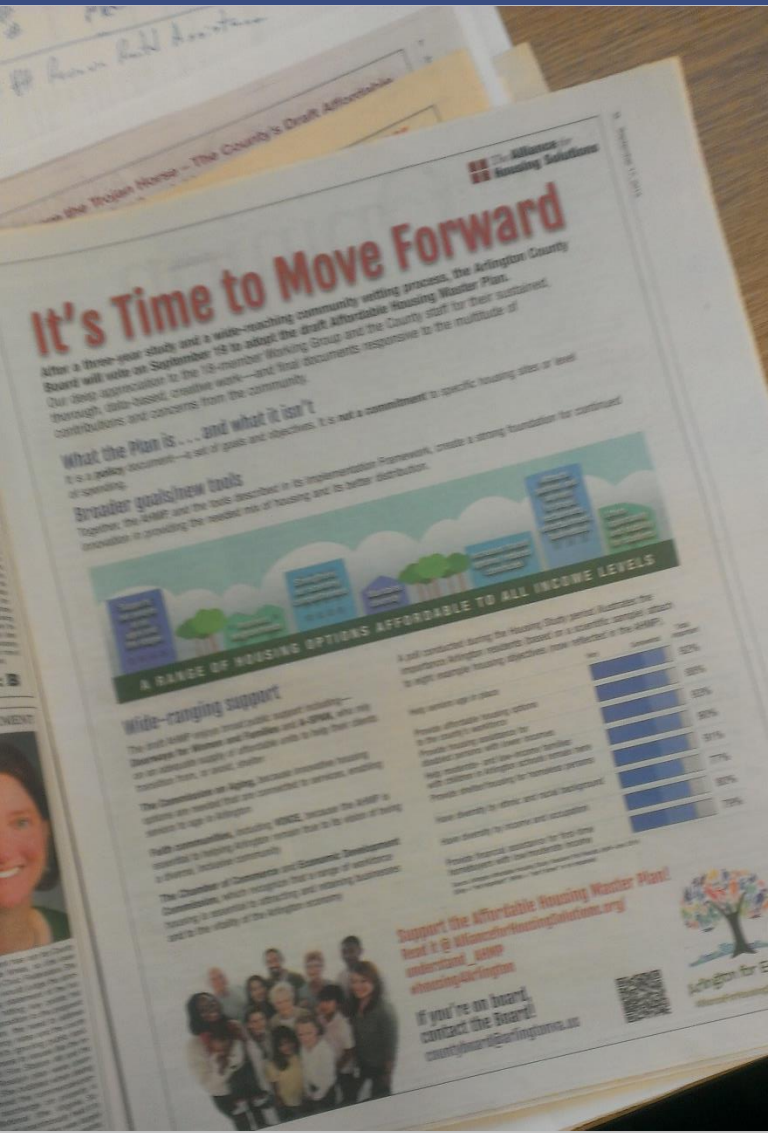


Implementing the Affordable Housing Master Plan



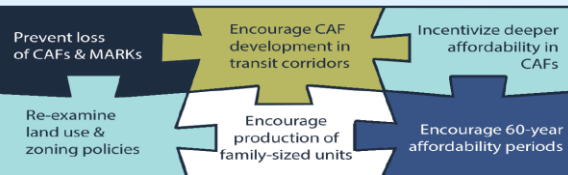
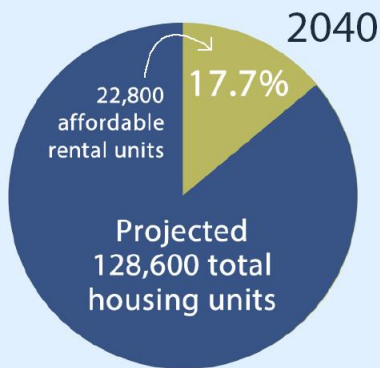
We have a plan!



Three Goals

Supply

Rental

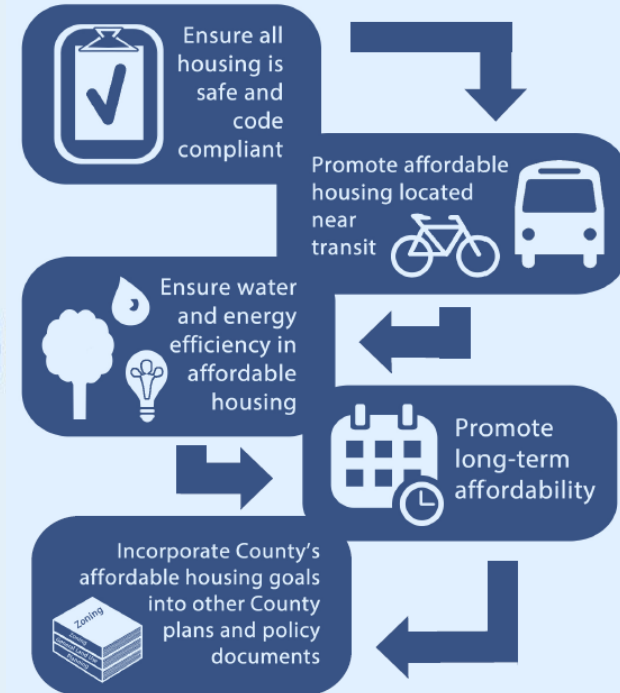


Homeownership

Access

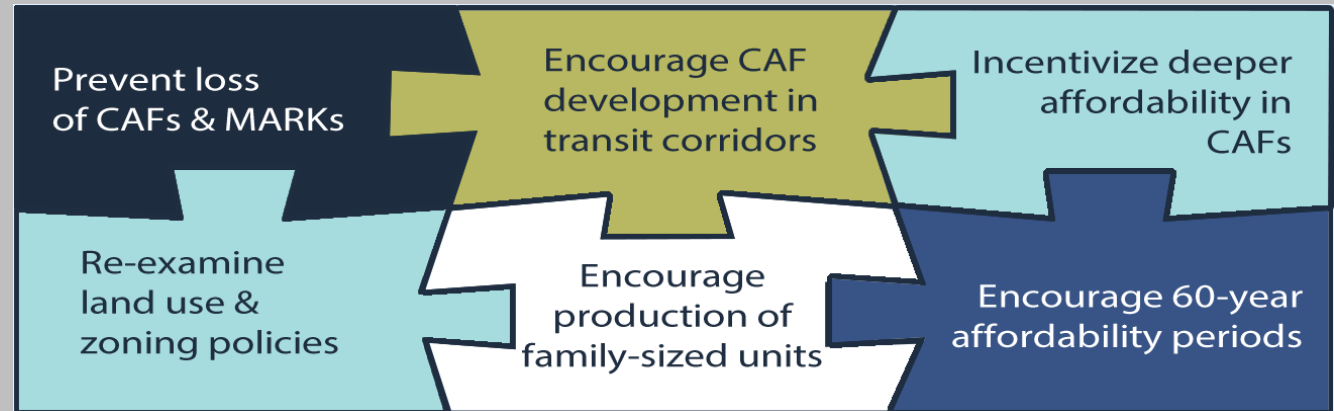
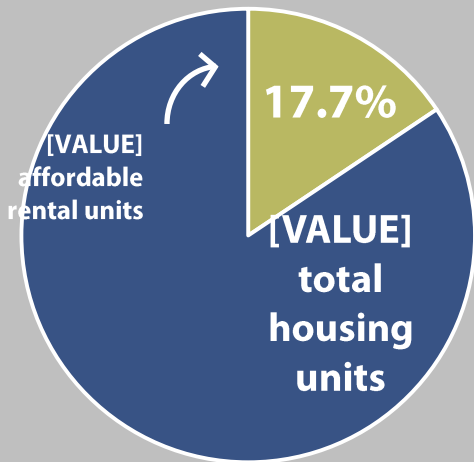


Sustainability



1. Supply

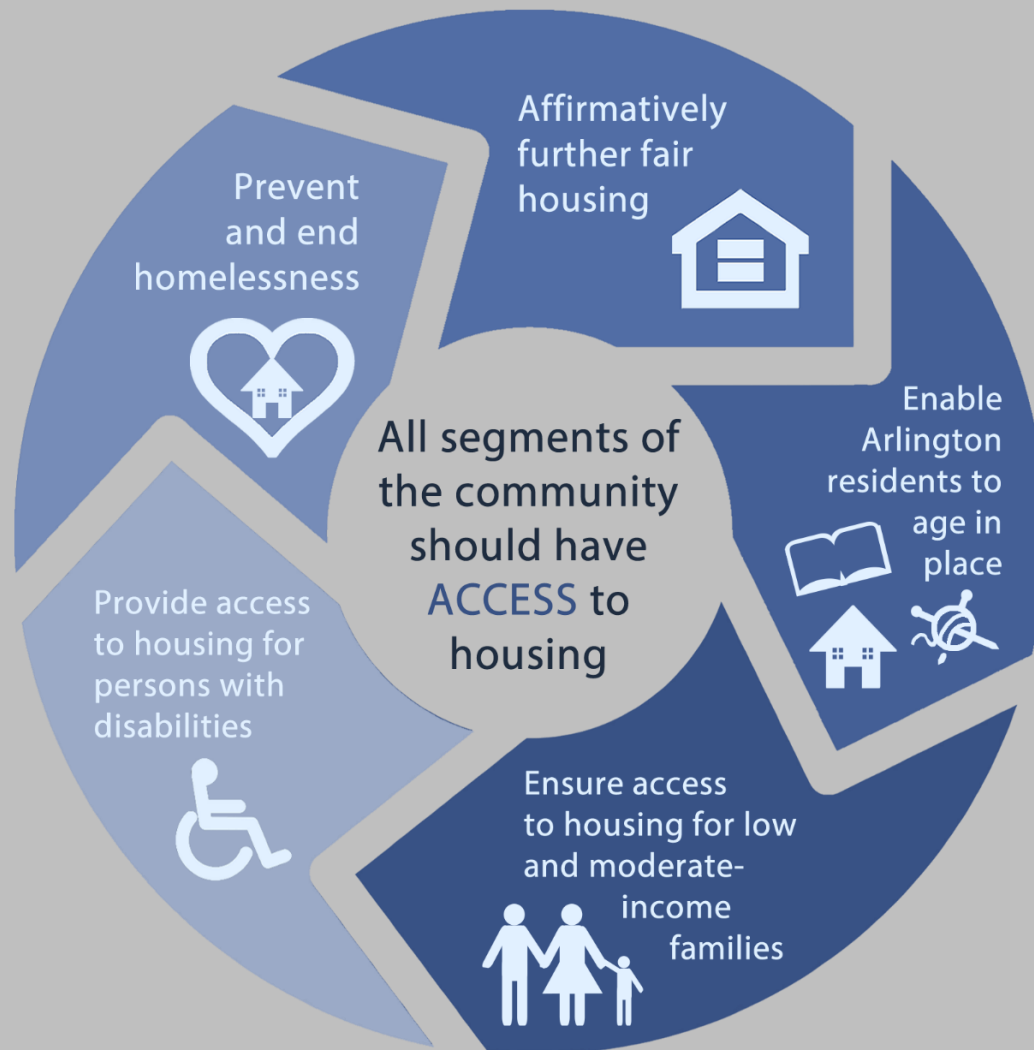
Affordable Rental Housing



Affordable Ownership Housing

- 28.4% of new housing
- 80% to 120% AMI

2. Access



3. Sustainability



Moving Forward



- **Monitoring and Evaluation Plan**
- **AHIF Guidelines and Procedures**
- **Accessory Dwellings**
- **Market Affordable Analysis**
- **Condo Association Assistance**
- **Real Estate Tax Relief Program Study**
- **Landlord Partnership**

- Establishes indicators for annual report
- Develop in consultation with Housing Commission Tools and Trends Subcommittee
- Public Comment (online & open houses)
- Housing Commission action – June 2016
- First Annual Report – December 2016

AHIF Guidelines and Procedures



- **Align w/AHMP & IF**
- **Notice of Funding Availability (NOFA)**
 - concurrent review of multiple proposals
 - encourage competitive applications
 - clarify the process and schedule
- **NOFA Working Group**
- **NOFA Package – Fall 2016**

Accessory Dwellings

- **Staff review of current Ordinance**
- **Report to Housing Commission on identified issues – July 2016**
- **Housing Commission – develop options**
- **Community discussion on options**
- **Recommendations for amendments to the Zoning Ordinance**
- **Consideration of amendments by County Board – July 2017**

Market Affordable Analysis



- **Countywide Market Affordable Analysis**
- **Consideration of preservation strategies**
- **Report to Housing Commission – Fall 2016**

Condo Association Assistance



- **Identification of needs and challenges**
 - **Survey of Condo Associations**
 - **Focus Groups**
- **Development of assistance program**
- **Housing Commission - TBD**
- **County Board action – Spring 2017**

Real Estate Tax Relief Study



- **Working Group to be formed**
- **Review of eligibility qualifications**
- **Review of scope and extent of relief (full/partial exemption, deferment)**
- **Effectiveness of program in enabling seniors and persons with disabilities to remain in their homes.**
- **Report to County Board - prior to FY 2018 Budget**

Landlord Partnership



- **Tenant guarantee fund**
- **Reduces risk to landlords**
- **Aids homeless clients**
- **Mitigates leasing barriers
(previous evictions, bad credit, etc.)**

- **Appointed advisory body to the County Board**
- **Chief advisor to the County Board on housing issues in Arlington County**
- **Aimed at expanding the County Board's knowledge about**
 - County housing conditions
 - Trends and needs, and
 - Developing policy recommendations

Function and Scope

- **Review housing policies and guidelines**
- **Develop policy recommendations**
 - Increasing the supply of affordable housing
 - Improvement of the rental housing supply
 - Homeownership assistance
 - Elderly and persons with disabilities housing needs
 - Homelessness
 - Housing related services
 - Displacement and relocation issues

Function and Scope



- **Recommendations to the County Board on housing funding proposals**
- **Budget recommendations**
- **Legislative agenda**
- **Review the housing data in Arlington**
- **Review new techniques and strategies**

Setting and Monitoring Housing Policy



- Advise the Board on setting housing policy
- Monitor the implementation of housing policy
- Recommendations on proposed new tools
- Evaluate affordable housing projects

FY 2016 Achievements



- **Homeless Services Center**
- **Opening of the Shell**
- **Union on Queen under construction**
- **Ground breaking of the Springs**
- **7,511 CAF units/over 1,300 Housing Grants**
- **FY 2017 Budget**
 - ✓ **\$9.6 Million - Housing Grants**
 - ✓ **\$13.6 Million - AHIF**

Thank you Mary



Kaz + Zen
Photography

20