

57



**SECULAR
MUSIC**

WALTON MUSIC CORP.

Chorus

University of California

Santa Cruz 95060

AFTONEN (EVENING)

Text by
NORMAN LUBOFF

Herman Säterberg

HUGO ALFVÉN

Quietly

pp

Soprano

Still, still, the woods, ra - dant, the
Sko - gen står tyst, him - len är

Alto

Still, still, the woods, ra - dant, the
Sko - gen står tyst, him - len är

Tenor

Still, still, the woods,

Bass

Still, still, the woods,
Sko - gen står tyst,

Piano
(For rehearsal only)

pp

heav'ns, Dim, dis - tant horns fill the air with their
klar. Hör, bu - ru tju - san - de vall - bor - net

heav'ns, Dim, dis - tant horns fill the air with their
klar. Hör, bu - ru tju - san - de vall - bor - net

pp *p*

ra - dant, the heav'ns, Dim, dis - tant horns fill the air with their
him - len är klar. Hör, bu - ru tju - san - de vall - bor - net

ra - dant, the heav'ns, Dim, horns ech - o,
him - len är klar. Hör, vall - bor - net

pp ©Copyright 1942 by A-B Carl Gehrman's Musikförlag, Stockholm.
"For the U.S.A. (incl. all its possessions and dependencies) and Canada:

ech - o. *poco rit.* *a tempo*
 lul - lar. *poco rit.* *a tempo* *pp*

ech - o. (Hum)
 lul - lar. *poco rit.* *a tempo* *pp*

ech - o. (Hum)
 lul - lar. *poco rit.* *a tempo* *pp*

ech - o. (Hum)
 lul - lar. *poco rit.* *a tempo* *pp*

ech - o. (Hum)
 lul - lar. *poco rit.* *a tempo* *pp*

poco rit. *a tempo* *pp*

rit.

rit.

rit.

rit.

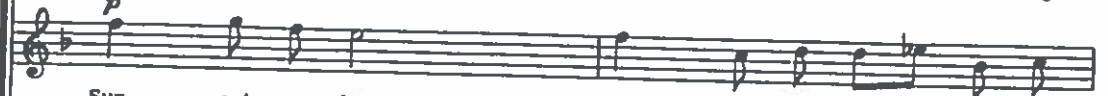
a tempo
p



Sun - set glow - ing, glow - ing, glow - ing, slow - ly, slow - ly dis - ap - pear - ing,
Kvöll - solns bloss sig stíl - la sán - ker, kvall - solns bloss sig stíl - la sán - ker

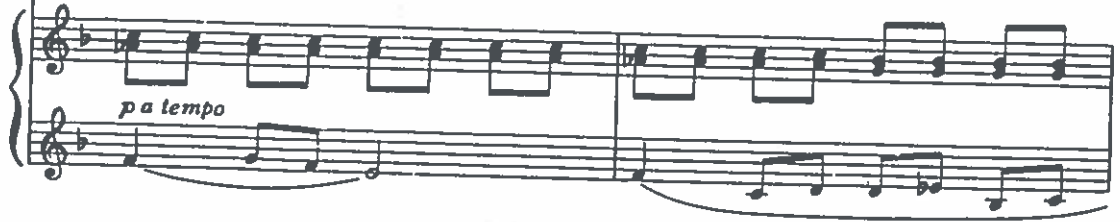


Sun - set, a - glow, soon dis - ap - pears be - neath the
Kvöll - solns bloss so - lens bloss sán - ker sig, sán - ker sig



Sun - set a - glow, soon dis - ap - pears be - neath the
Kvöll - solns bloss so - lens bloss sán - ker sig, sán - ker sig

a tempo



p a tempo



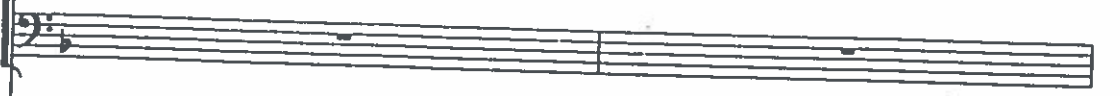
slow - ly, slow - ly dis - ap - pear - ing, dis - ap - pear - ing slow - ly, slow - ly,
ner ut - i den lug - na, kla - ra wæg, ut - i den lug - na, kla - ra



sea. Slow - ly, so slow - ly, it dis - ap -
ner, ner i den lug - na, den kla - ra,



sea. Slow - ly, so slow - ly, it dis - ap -
ner, ner i den lug - na, den kla - ra,



dim., *pp*
dis - ap - pear - ing 'neath the sea. (Hum)
våg, ut · i den kla - ra våg.

dim., *pp*
pears be - neath the sea. (Hum)
kla - ra våg.

dim., *pp*
pears be - neath the sea. (Hum)
kla - ra våg.

pp
(Hum)

dim., *pp*

rit.

rit.

rit.

rit.

rit.

rit.

a tempo
p

Thru' the moun-tains, thru' the val - leys, lin - g'ring, the ech - oes
a tempo
p
 i - bland däl - der, grö - na kul - lar e - ko kring nej - den

Thru' the moun-tains, thru' the val - leys, lin - g'ring, the ech - oes
a tempo
p
 i - bland däl - der, grö - na kul - lar e - ko kring nej - den

Thru' the moun-tains, thru' the val - leys, lin-g'ring, the ech-oes, the ech - oes
a tempo
p
 i - bland däl - der, grö - na kul - lar mång-dub-belt e - ko kring nej - den

a tempo

a tempo
p

sound. — Thru' the moun-tains, thru' the val - leys, lin - g'ring, the
 far... i - bland däl - der, grö - na kul - lar e - ko kring

sound. — Thru' the moun-tains, thru' the val - leys, lin - g'ring, the
 far... i - bland däl - der, grö - na kul - lar e - ko kring

sound. — Thru' the moun-tains, thru' the val - leys, lin - g'ring, the
 far... i - bland däl - der, grö - na kul - lar e - ko kring

p

Thru' the moun-tains, thru' the val - leys, lin-g'ring, the ech - oes, the
 i - bland däl - der, grö - na kul - lar mång-dub-belt e - ko kring

ech - oes sound. (Hum)
nej - den far...

ech - oes sound. (Hum)
nej - den far...

ech - oes sound. (Hum)
nej - den far...

ech - oes sound. (Hum)
nej - den far...

Handwritten annotations: *rit.* (ritardando) and *6/8* (time signature) are present in the piano accompaniment staves.

