



Walmart

Aerial View from 24th Street



Walmart

24th Street Entrance





Screen Wall from 24th Street



Screen Wall from Sisson Street



Screened Loading Dock

Walmart 

Market &
Pharmacy

Front of Walmart Store





Sidewalk in front of Walmart



PARKING ENTRANCE

10' CLEARANCE

Entrance to Additional Parking





Walmart



View from Huntingdon Bldg to
Circulation Tower





Pedestrian Experience on Main Entrance





View into Walmart's Main Entrance



PREVIOUS DESIGN - SOUTH ELEVATION



PROPOSED DESIGN - SOUTH ELEVATION



PREVIOUS DESIGN - EAST ELEVATION



PREVIOUS DESIGN - NORTH ELEVATION



PREVIOUS DESIGN - WEST ELEVATION



PROPOSED DESIGN - EAST ELEVATION



PROPOSED DESIGN - NORTH ELEVATION



PROPOSED DESIGN - WEST ELEVATION



Massa Montalto Architects, PC
3297 Route 66 | Neptune, NJ 07753

P: 732.918.2300 | F: 732.918.2351 | www.mma-architects.com

DESIGN REPRESENTATION ONLY NOT FOR CONSTRUCTION

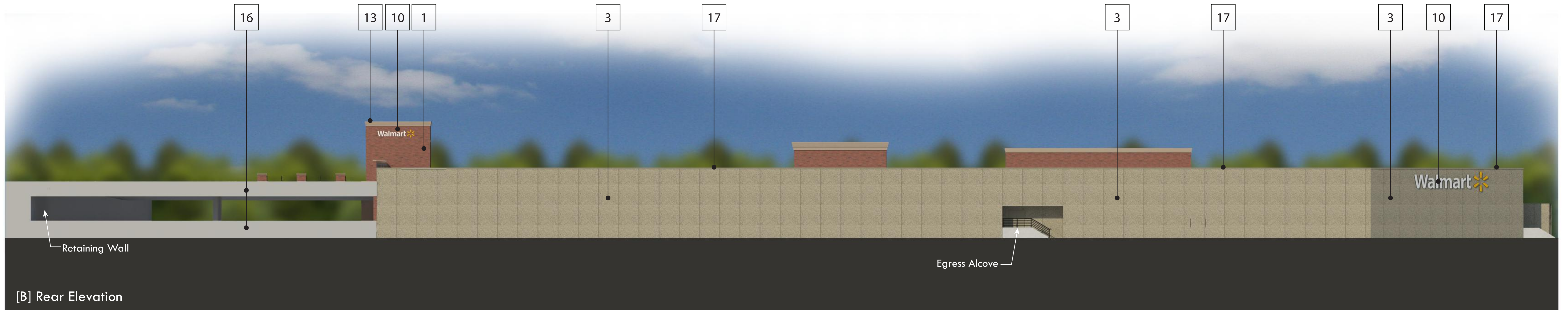
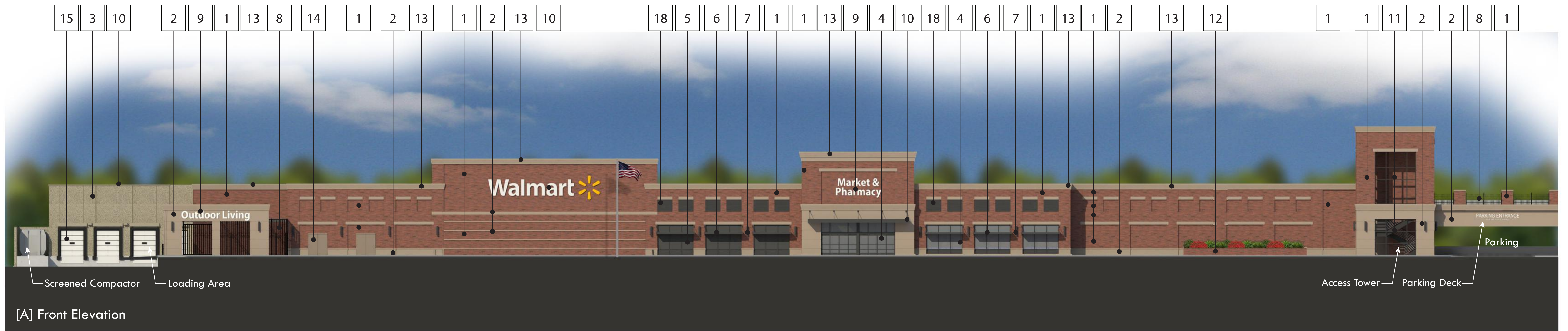
The building images shown are a representation of the current design intent only. The building images may not reflect variations in color, tone, hue, tint, shading, ambient light intensity, materials, texture, contrast, font style, construction variations required by building codes or inspectors, material availability or final design detailing.

Comparison Elevations
25th Street Station Development

| Submission: September 20, 2013 |

25th & Howard St.
Baltimore, MD





Elevation Key Notes:

1	Quik-Brik (Promenade Blend)	11	Open Metal Framing System
2	Arch. Block or Arch. Precast Concrete	12	Planter Box
3	Precast Concrete Panel	13	Cornice
4	Glass Storefront System	14	Painted Hollow Metal Door
5	Spandrel Glass Storefront System	15	Aluminum Roll Down Door
6	Metal Awning System	16	Concrete Parking Structure
7	Accent Lighting	17	Painted Metal Coping
8	Ornamental Fence	18	Centria Metal Panel
9	Directional Sign	19	Not Used
10	Illuminated Sign	20	Not Used

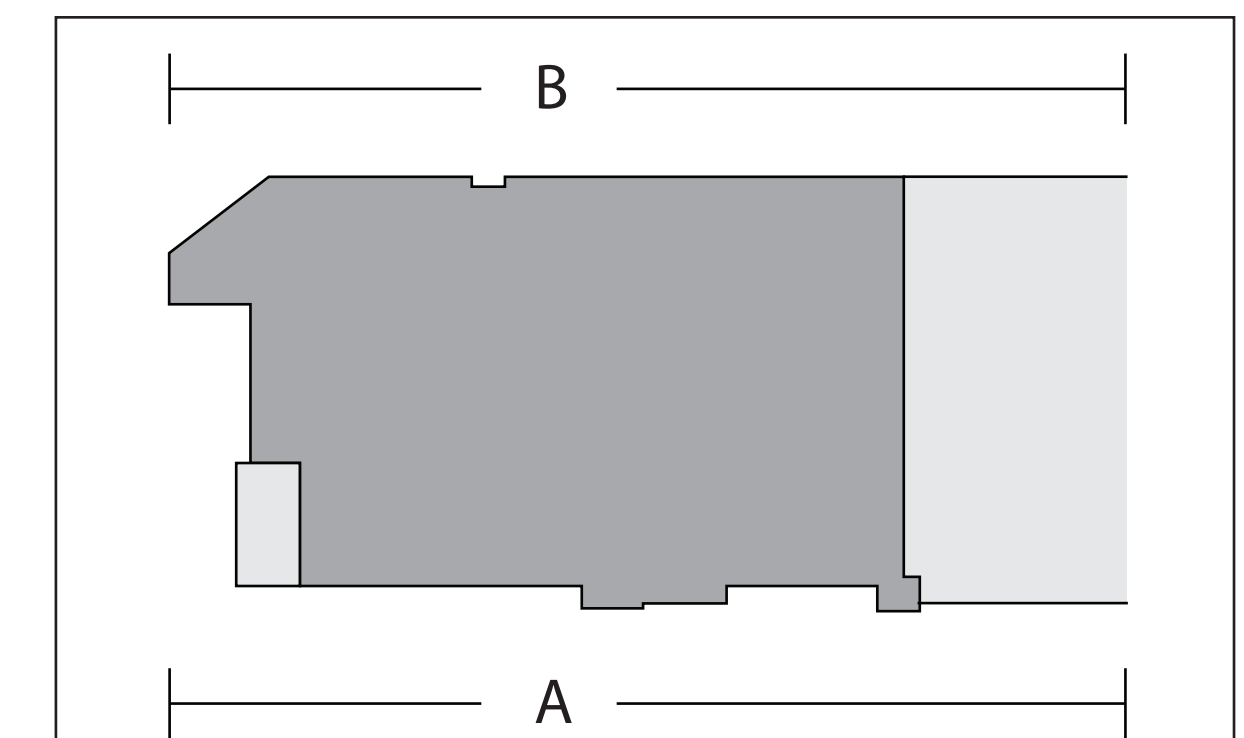
Perspective of Front:



Perspective of Rear:



Key Plan:



Massa Montalto Architects, PC
3297 Route 66 | Neptune, NJ 07753

P: 732.918.2300 | F: 732.918.2351 | www.mma-architects.com
DESIGN REPRESENTATION ONLY NOT FOR CONSTRUCTION
The building images shown are a representation of the current design intent only. The building images may not reflect variations in color, tone, hue, tint, shading, ambient light intensity, materials, texture, contrast, font style, construction variations required by building codes or inspectors, material availability or final design detailing.

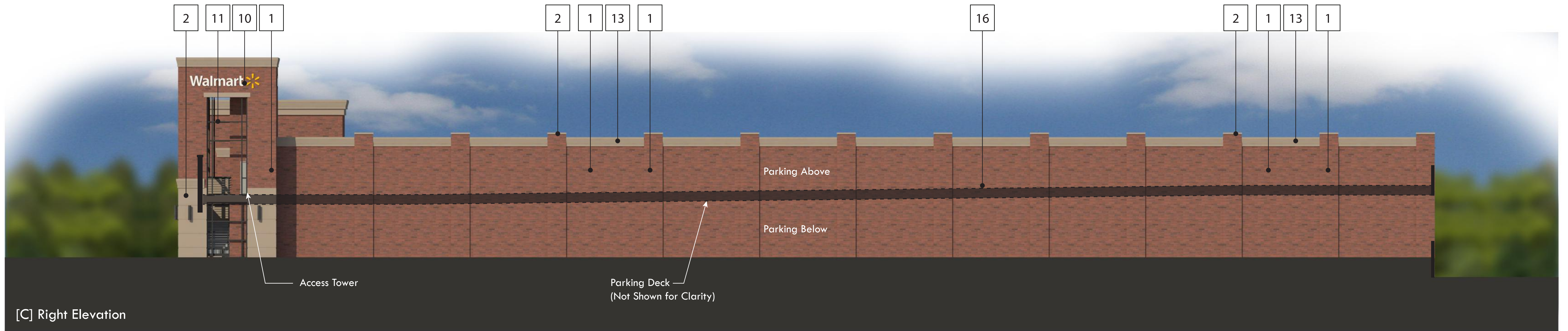
Elevations [Front & Rear]
25th Street Station Development

| Submission: March 20, 2013 |

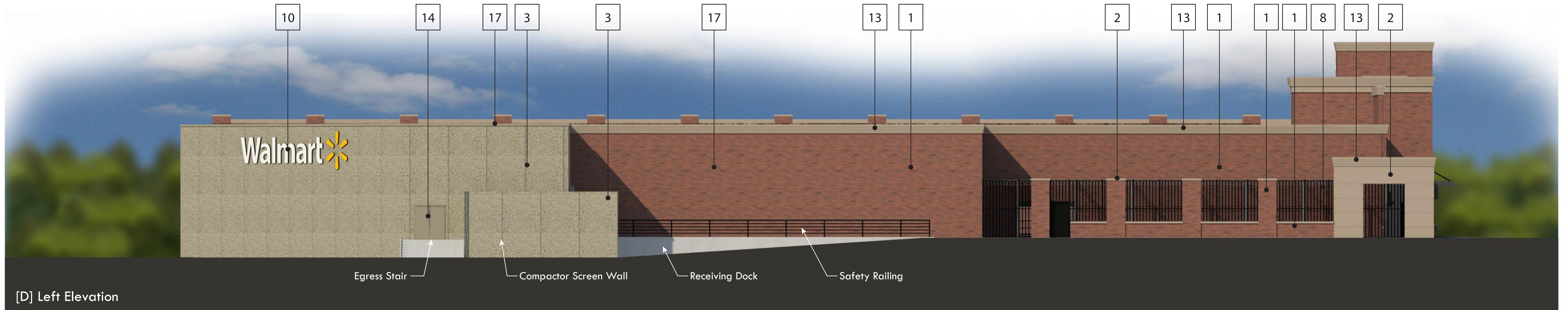
25th & Howard St.
Baltimore, MD



A1.1



[C] Right Elevation



[D] Left Elevation

Elevation Key Notes:

1	Quik-Brik (Promenade Blend)	11	Open Metal Framing System
2	Arch. Block or Arch. Precast Concrete	12	Planter Box
3	Precast Concrete Panel	13	Cornice
4	Glass Storefront System	14	Painted Hollow Metal Door
5	Spandrel Glass Storefront System	15	Aluminum Roll Down Door
6	Metal Awning System	16	Concrete Parking Structure
7	Accent Lighting	17	Painted Metal Coping
8	Ornamental Fence	18	Centria Metal Panel
9	Directional Sign	19	Not Used
10	Illuminated Sign	20	Not Used

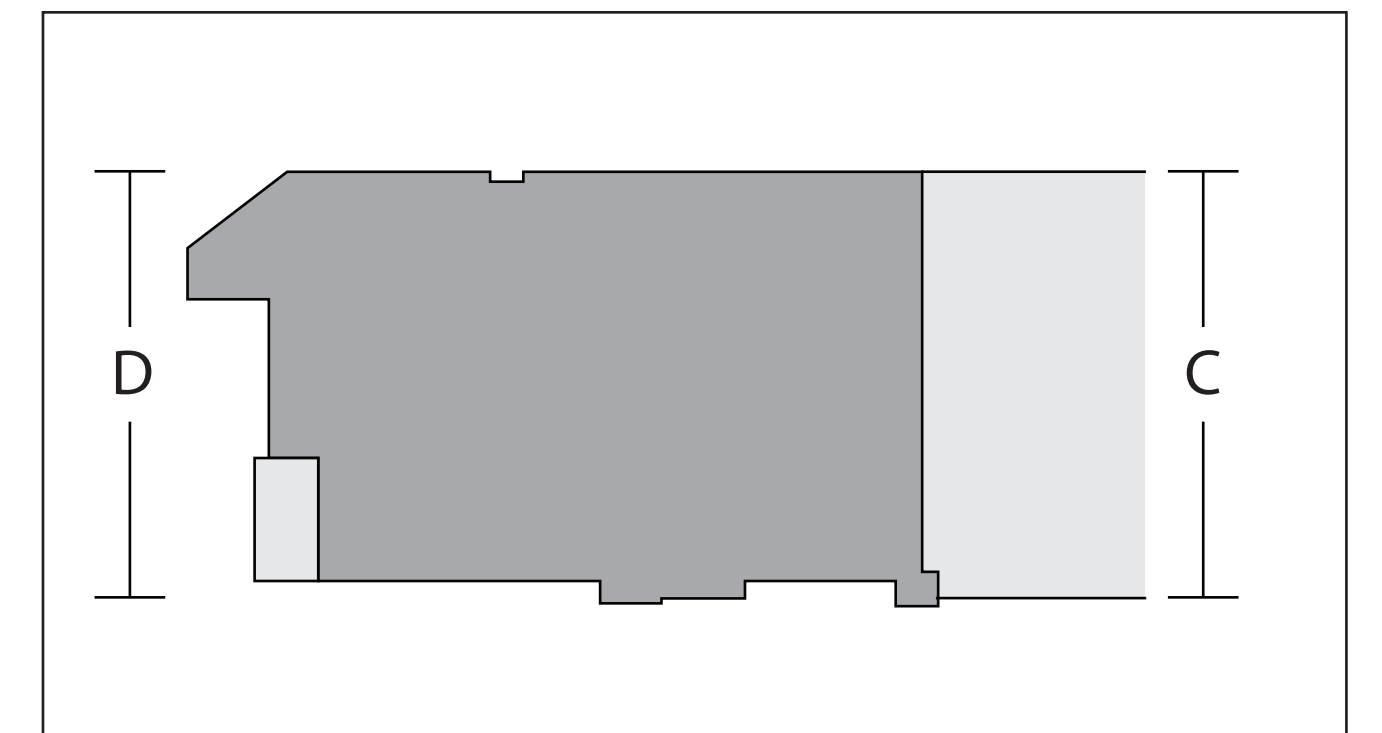
Perspective of Right:



Perspective of Left:



Key Plan:



Massa Montalto Architects, PC
3297 Route 66 | Neptune, NJ 07753

P: 732.918.2300 | F: 732.918.2351 | www.mma-architects.com
DESIGN REPRESENTATION ONLY NOT FOR CONSTRUCTION
The building images shown are a representation of the current design intent only. The building images may not reflect variations in color, tone, hue, tint, shading, ambient light intensity, materials, texture, contrast, font style, construction variations required by building codes or inspectors, material availability or final design detailing.

Elevations [Right & Left]
25th Street Station Development

| Submission: March 20, 2013 |

25th & Howard St.
Baltimore, MD



A1.2