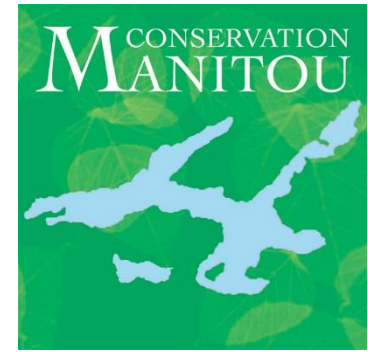


CONSERVATION MANITOU

2016 ANNUAL GENERAL MEETING OF MEMBERS

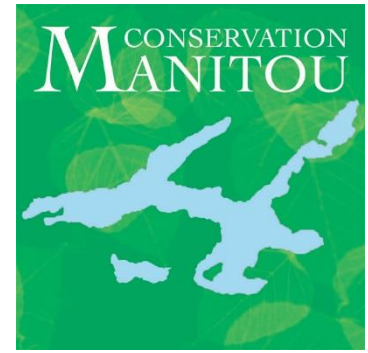
May 21, 2016 Ivry-sur-le-Lac, Quebec

HISTORY



- Founded as a Corporation (January 2013)
- Received Charitable Status from Canada Revenue Agency (April 2013)
- Qualified Recipient of Environment Canada's **Ecological-Gifts Program** (May 2013)
- Preserve & protect eco-sensitive areas around Lake Manitou (focus on watershed)
- Raised over \$1.7 million and received \$2.1 million in land donations (Eco-Gifts)
- Largest conservancy focused in Laurentians (130 members/\$3.8M in net assets)
- Board of Directors:
 - Stephen Takacsy (Chair) - David McAusland (Vice-Chair)
 - Kim Holden (Secretary-Treasurer)
 - Michael Prupas - Matt Stotland
 - Joseph Graham - Arnaud Holleville

CONSERVATION LANDS



2013: Campbell (33 acres with 2,200 ft of shoreline in Townsend Bay)

Purchase: \$1,165,000

2014: Adams (47 acres with 1,100 ft of shoreline in Townsend Bay + Adams Trail)

Eco-Gift: \$399,000 + Purchase: \$488,000 (BOS of \$238,000, now \$150,000)

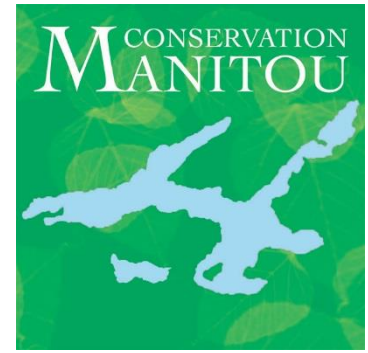
2015: Dobell (53 acres on Chemin Fyon/Chanterelles/Graham)

Eco-Gift: \$133,000

Stikeman-McCall (87 acres with 1,100 ft of shoreline on Lake Manitou
and 2,500 ft of shoreline on Horse Shoe Lake + section of Laurentian Trail)

Eco-Gift: \$1,475,000

CONSERVATION LANDS



2016: McCall Island (17 acres) – Transfer from McCall Island Foundation

Consent obtained from **Nature Conservancy of Canada**

Culver Lot 34 (48 acres on Chemin Fyon/Chanterelles)

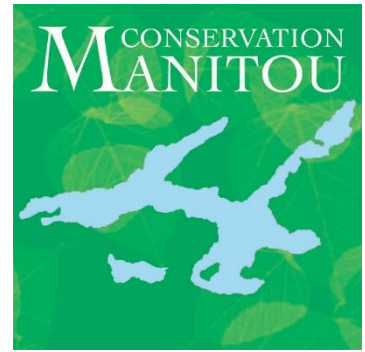
Eco-Gift: \$126,000

TOTAL: 285 acres of forested land in Ivry-sur-le-lac

4,400 ft (1.3 km) of shoreline on Lake Manitou + Islands

2,500 ft (0.8 km) of shoreline on Horse Shoe Lake

STEWARDSHIP

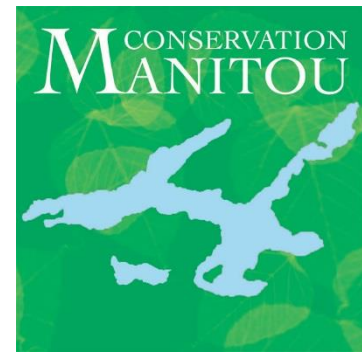


Rezoning by Municipality of Ivry-sur-le-lac (reduces MRC valuation & taxes):

- 1- **Reserve Naturelle Townsend:** 80 acres – rezoned for conservation in 2014
- 2- **Reserve Powell:** 101 acres – partly rezoned for conservation in 2015
- 3- **Reserve Fer-a-Cheval:** 87 acres – rezoned for conservation in 2015
- 4- **Ile McCall:** 17 acres – rezoned for conservation since 1989

Environment & Stewardship Committee:

Steve Adams (East), Michael Prupas (West), Matt Stotland (North),
Stephen Takacsy (South, Islands), Jean-Yves Dion (Horse Shoe)



NEW ACQUISITIONS

1 - Lac de la Loutre (aka Atwater Lake) – Ste-Agathe (Chemin du lac Azur)

250 acres being donated by Shirley Stikeman (excluding field & buildings)

Wetlands, ridges, hilltops, entire lake, and large network of hiking/ski trails

2- Hanging Rock – St-Faustin (between Chemin des lacs and Barker Road)

Offer to purchase 25 acres for \$50k funded mainly with \$35k in grants

Wetlands, hilltop, local landmark (huge glacial erratic), and hiking/ski trail

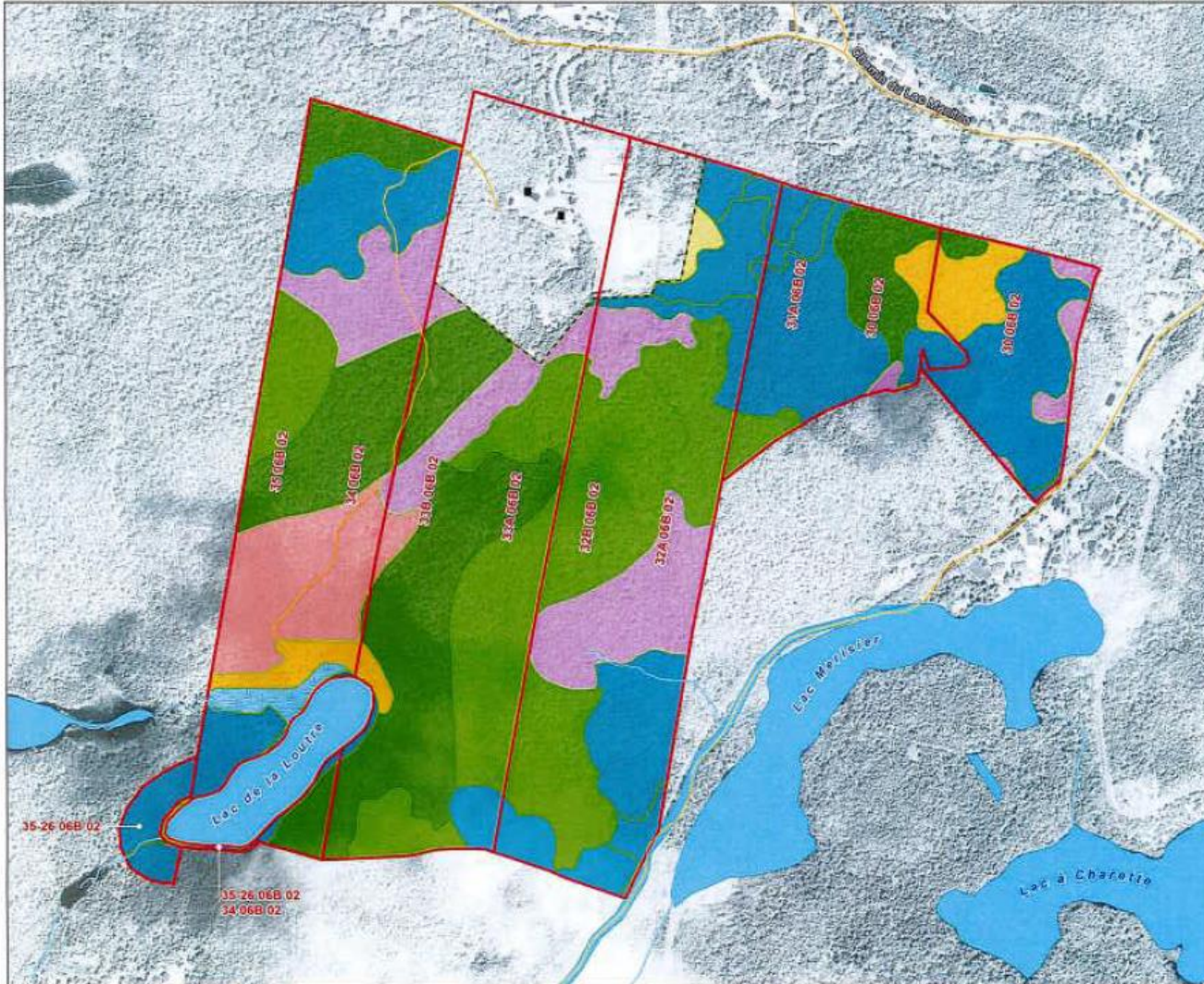
To become part of **Horseshoe Reserve**

Upon closing, conservation lands will total **560 acres**

LAC-DE-LA-LOUTRE/ATWATER LAKE



Peuplements forestiers et milieux humides de la propriété Stikeman Sainte-Agathe-des-Monts



Légende

- Bâtiment
- Cours d'eau
- Routes et sentiers
- Étendue d'eau
- Limite de peuplement

Propriété de conservation

- ▭ Lots faisant l'objet d'une demande de don écologique
- - - Superficie approximative à retrancher pour le don écologique (12,1 ha)

Peuplements forestiers

- Érablière à érable à sucre
- Érablière à érable à sucre et hêtre à grandes feuilles
- Érablière à bouleau jaune
- Érablière à érable à sucre et bouleau à papier
- Érablière à érable à sucre et érable rouge
- Peuplements mixtes à sapin baumier
- Milieu humide
- Milieu ouvert

0 200 400 m

N



Nature-Action Québec Inc.
 120, rue Ledoux
 Dolos (Québec) J3G 0A4
 Téléphone: (450) 596-0422
 gencmatique@nature-action.qc.ca

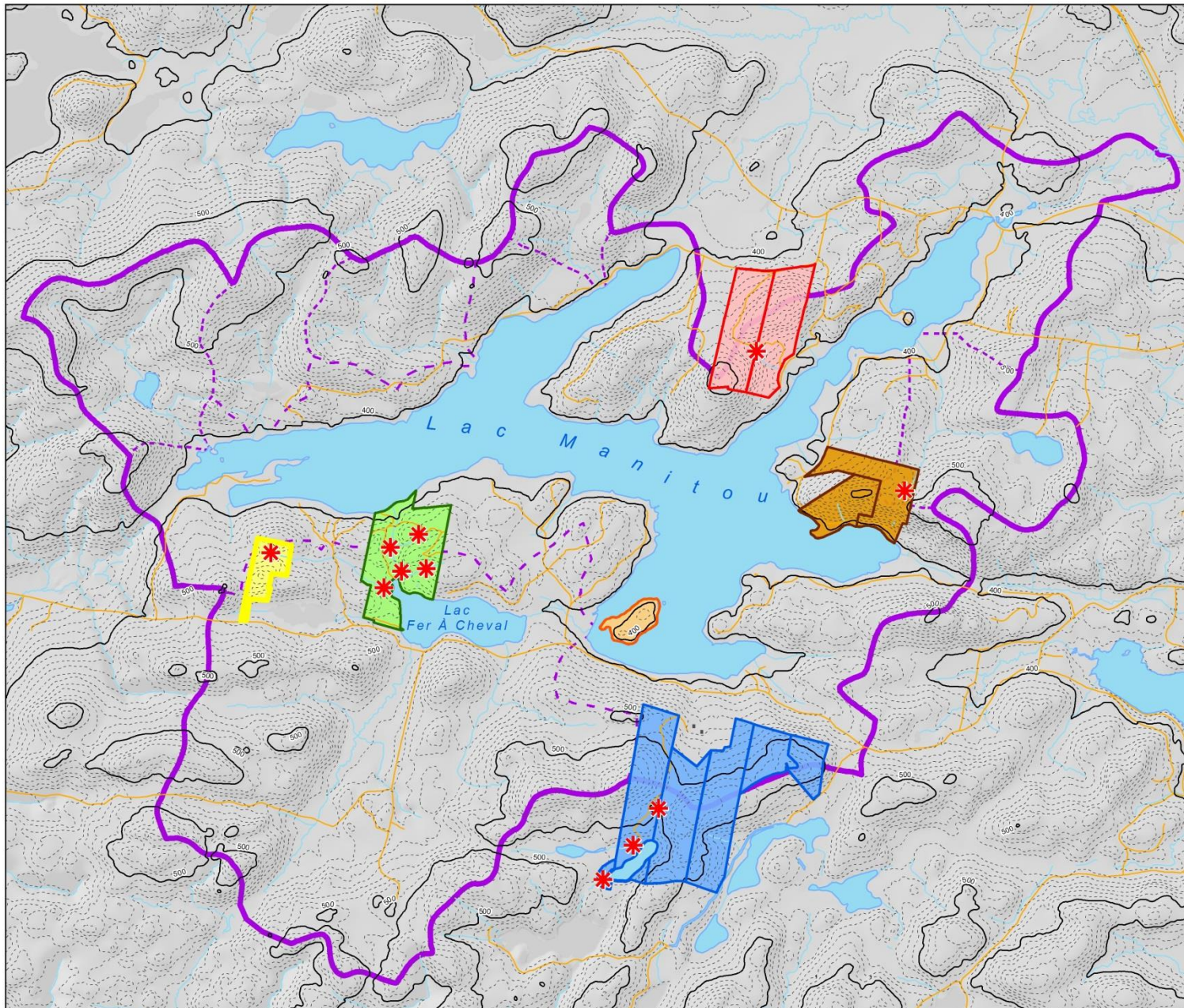
Préparation : PR; Date : Avril 2016
 Sources de données : BD1Q, SIEF, ESRI.
 Projection : MTM Zone 8
 Système de référence géodésique : NAD83
 Réf : SAG_2016_003_CT / MD / LB

HANGING ROCK



HANGING ROCK + HORSESHOE RESERVE = 112 acres

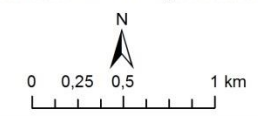




Propriétés de Conservation Manitou

Légende

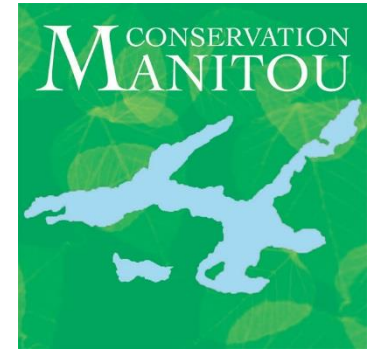
- * Milieu humide / Marécage arborescent
- Courbes de niveau : équidistance 10 m
- 400 Altitude en mètres au-dessus du niveau de la mer
- Routes et sentiers
- ▭ Bassin versant du lac Manitou
- ▭ Sous bassin versant
- Propriétés de conservation**
- ▭ Réserve naturelle Townsend (32,4 hectares / 80 acres)
- ▭ Réserve Powell (41 hectares / 101 acres)
- ▭ Réserve Fer-à-Cheval (35 hectares / 87 acres)
- ▭ Île McCall (6,9 hectares / 17 acres)
- Acquisitions prochaines**
- ▭ Chalifoux/Hanging Rock (10 hectares / 24,7 acres)
- ▭ Lac de la Loure/Atwater Lake (101 hectares / 250 acres)



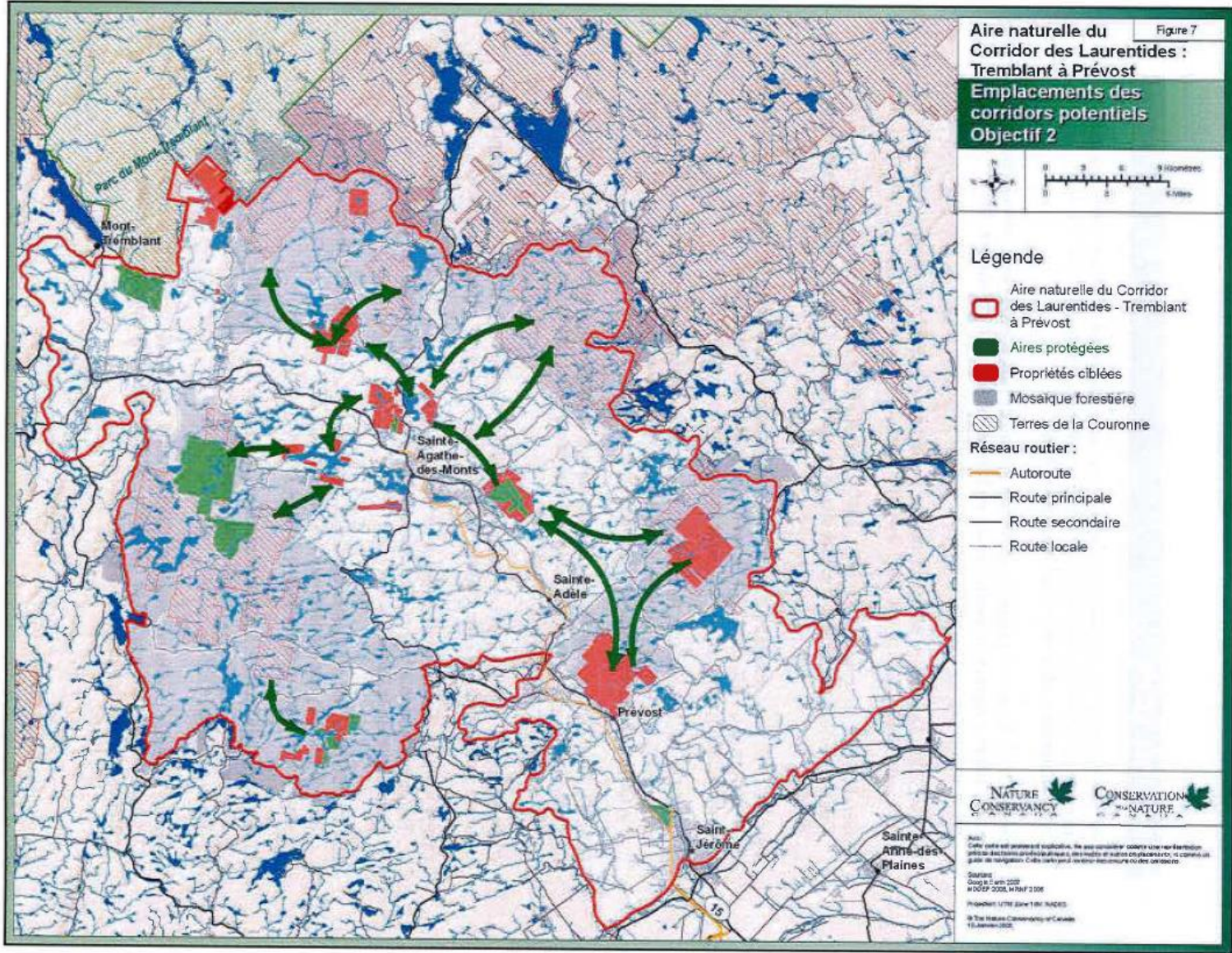
Nature-Action Québec Inc.
 120, rue Ledoux
 Belloeil (Québec) J3G 0A4
 Téléphone: (450) 536-0422
 geomatique@nature-action.qc.ca

Préparation : PR; Date : Mai 2016
 Source de données : BDTQ, SIEF, MRC, CEHQ.
 Projection : MTM Zone 8
 Système de référence géodésique : NAD83
 Réf : SAG_2016_006 / MD / MD

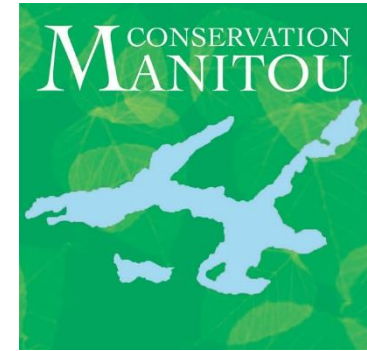
LONG TERM GOALS



- Preserve **2,000 acres** in Ivry, Ste-Agathe and St-Faustin (ownership or servitudes)
- Protect lands through rezoning, cross-servitudes or Private Nature Reserve status
- Build an endowment to fund stewardship costs in perpetuity
- Promote benefits of conservation to owners and municipalities (*“natural capital”*)
- Help protect historic ski trails such as Maple Leaf (Nantel) and Laurentian
- Help create East-West wildlife corridor between Lac Brule and CTEL
- Help study wildlife crossing over 117 (committee formed with NCC and others)



CAPITAL CAMPAIGN



STEWARDSHIP FUND

Objective: to raise a minimum of \$400,000

Purpose: to repay BOS and fund carrying costs of acquired lands in perpetuity

Use of Proceeds: up to \$150,000 to repay Balance of Sale

\$250,000+ to start Stewardship Fund

Board/Other Commitments: \$50,000 so far

Capital: to be preserved

Income: used solely to cover annual carrying costs of conserved lands



THANK YOU TO
ALL OF OUR MEMBERS & DONORS,
ECOLOGICAL GIFTS GIVERS
IVRY'S MAYOR & COUNCILLORS
FOR THEIR UNWAVERING SUPPORT IN
PRESERVING THE FUTURE TOGETHER

