



# Echoed X

finishes at 8" x 12"

*Tribal  
block  
club*

[www.13spools.com](http://www.13spools.com)

## *Cutting Directions*



Blue Fabric

- (2) 3" x 3"
- (1) 4" x 4"
- (2) 1" x 7"
- (2) 2" x 6"
- (2) 5" x 5"
- (1) 7" x 7"

Black Fabric

- (2) 1.5" x 7"
- (2) 1" x 7"
- (2) 1.75" x 11"



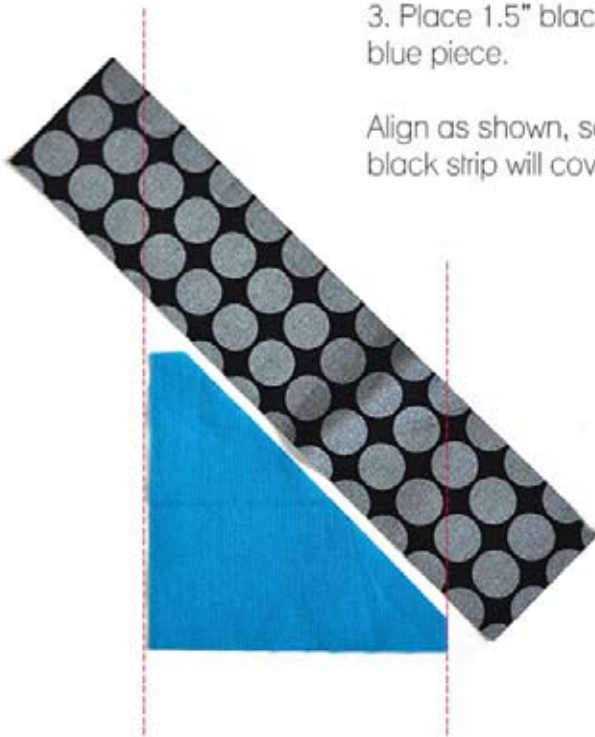
# *Piecing Directions*

1. Draw a diagonal line across 3" x 3" blue square.
2. Cut 1/4" away from drawn line.



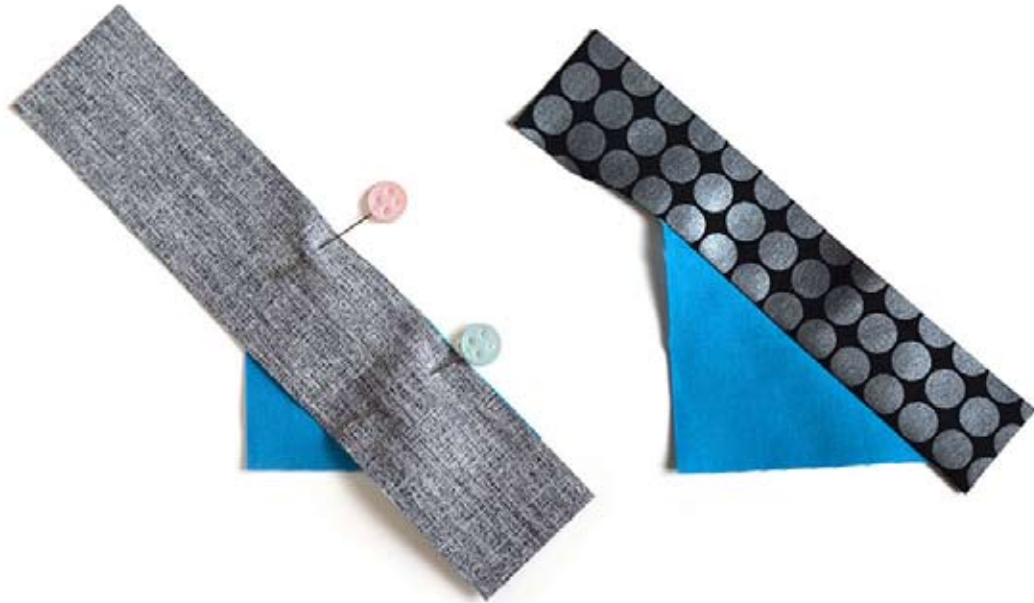
3. Place 1.5" black strip along diagonal edge of blue piece.

Align as shown, so that after seam is sewn, the black strip will cover both left and right guidelines.



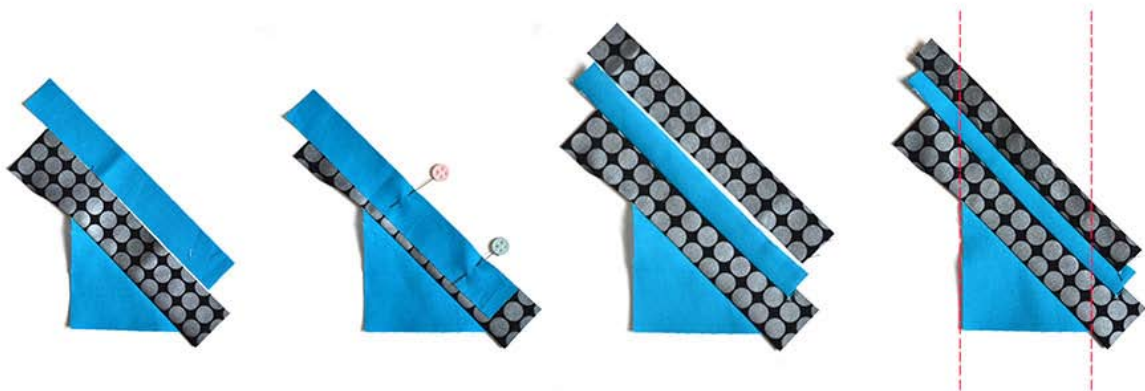
4. Flip piece gently over, to place right sides together.

5. Pin and sew 1/4" seam. Press toward black.



6. Repeat process with 1" blue strip and 1" black strip. Continue pressing all seams in same direction.

Make sure strips will cover both left and right guidelines.



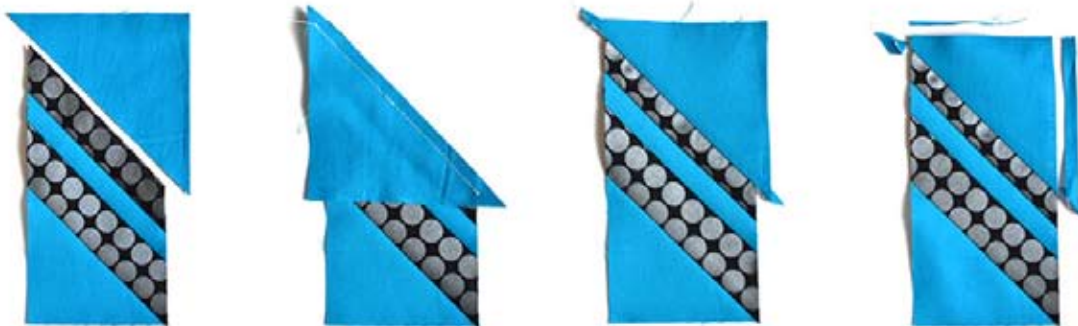
9. Cut 4" square in half diagonally.

10. Place one triangle as shown below, so there is excess on both sides of black strip.

11. Gently flip triangle over. Pin and sew in place.

12. Press toward blue.

13. Trim down to 3" x 6" (do not trim along bottom edge).



14. Repeat Steps 1 - 13 to create a second pieced section, in reverse.

Press first seam toward blue,  
and continue pressing all  
seams in the same  
direction.





15. Sew together two pieced sections (seams will nest). Press open.

16. Sew on both 2" x 6" blue pieces. Press toward blue pieces.



Set aside pieced section from Step 16.

17. Draw a diagonal line on 4.5" x 4.5" blue square.

18. Cut 1/4" away from drawn line.

19. As in previous steps, place black strip along diagonal edge of blue piece. Align as shown so that after seam is sewn, the black strip will cover both left and right guidelines.



20. Flip piece gently over, to place right sides together.

21. Pin and sew 1/4" seam. Press toward black.



22. Trim excess off strip on left side of piecing, lining it up with the left edge of the blue triangle.

23. Trim to 4.5" wide by cutting excess off strips on right side of piecing.

24. Cut 7" square in half diagonally.

25. As in Steps 10 - 12, place triangle next to pieced section, centering so there is excess on both sides of the black strip.



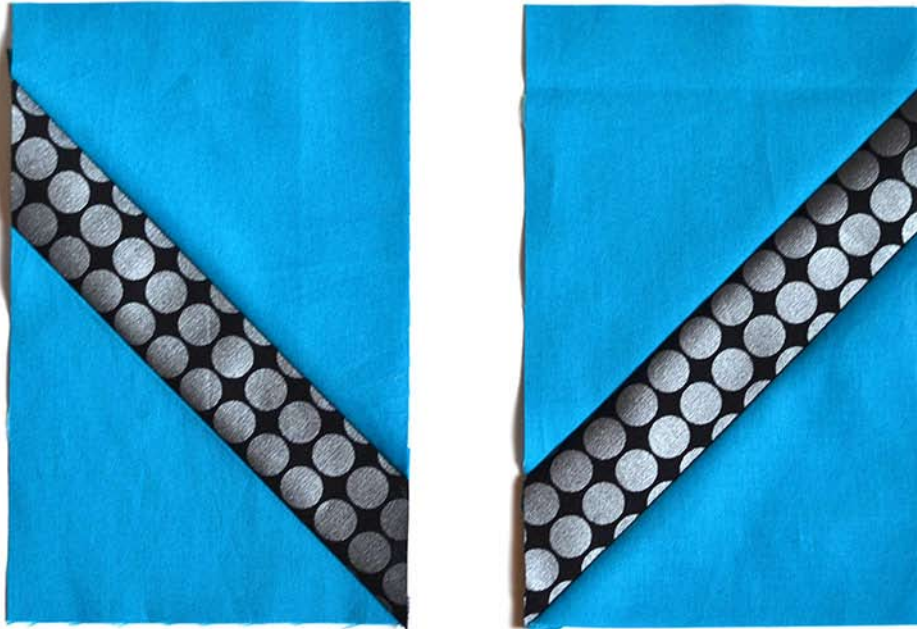
26. Gently flip triangle over so right sides are together.

Pin and sew in place.

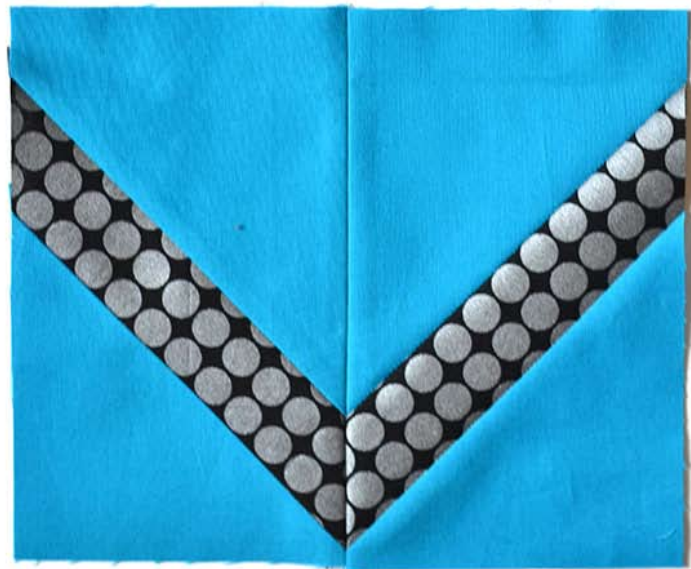
Press toward blue.

27. Trim down to 4.5" x 7" (do not trim along bottom edge, as in step 13).

28. Repeat Steps 17 - 27 to create a second pieced section. Press all seams in the opposite direction.



29. Sew together two pieced sections (seams will nest). Press open.





30. Sew two pieced sections together in orientation shown.

Press open.

