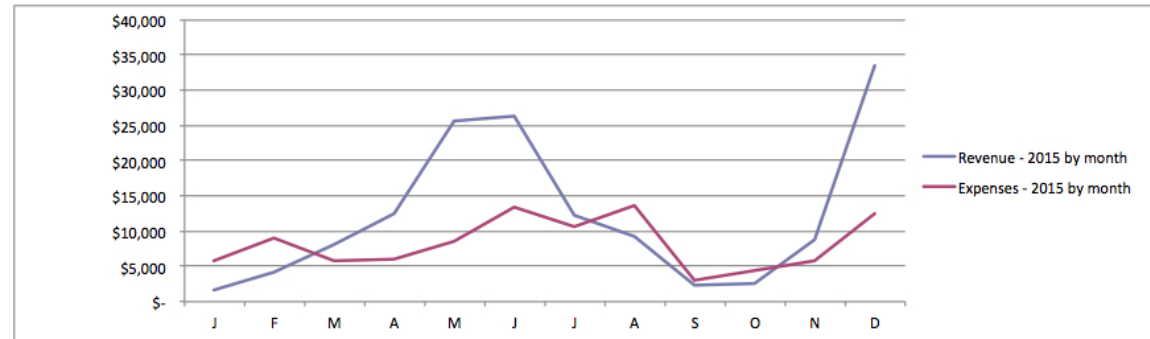
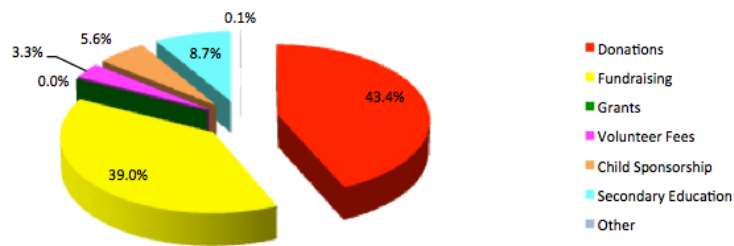




Revenue Report 2015

Month	Total	Donations	Fundraising	Grants	Volunteer Fees	Child Sponsorship	Children's Secondary Education	Other	
January 2015	\$1,626	\$1,526	\$-	\$-	\$-	\$100	\$-	\$-	
February	\$4,265	\$1,097	\$1,600	\$-	\$-	\$911	\$657	\$-	
March	\$8,053	\$4,385	\$1,594	\$-	\$400	\$1,560	\$90	\$24	
April	\$12,522	\$5,540	\$6,845	\$50	\$-	\$-	\$87	\$-	
May	\$25,550	\$3,721	\$12,114	\$-	\$707	\$100	\$8,907	\$-	
June	\$26,329	\$19,685	\$3,200	\$-	\$911	\$1,585	\$948	\$-	
July	\$12,304	\$3,020	\$5,755	\$-	\$2,408	\$1,030	\$91	\$0	
August	\$9,253	\$2,962	\$5,350	\$-	\$-	\$425	\$516	\$-	
September	\$2,285	\$1,095	\$500	\$-	\$-	\$600	\$90	\$0	
October	\$2,600	\$1,395	\$755	\$-	\$-	\$100	\$350	\$0	
November	\$8,765	\$8,165	\$280	\$-	\$-	\$300	\$-	\$20	
December	\$33,394	\$11,158	\$19,261	\$-	\$365	\$1,560	\$1,000	\$50	
	\$146,945	\$63,749	\$57,254	\$50	\$4,791	\$8,271	\$12,736	\$95	\$146,945
		43.4%	39.0%	0.0%	3.3%	5.6%	8.7%	0.1%	100.0%

Revenue - by Category - 2015



Donations - Individual donations

Fundraising - Resulting from an event or campaign

Grants - Applied for, earmarked funds

Volunteer Fees - Payments by volunteers

Child Sponsorship - Sponsoring a child at home

Children's Secondary Education - Sponsoring a child to attend secondary school

Other - Misc. income