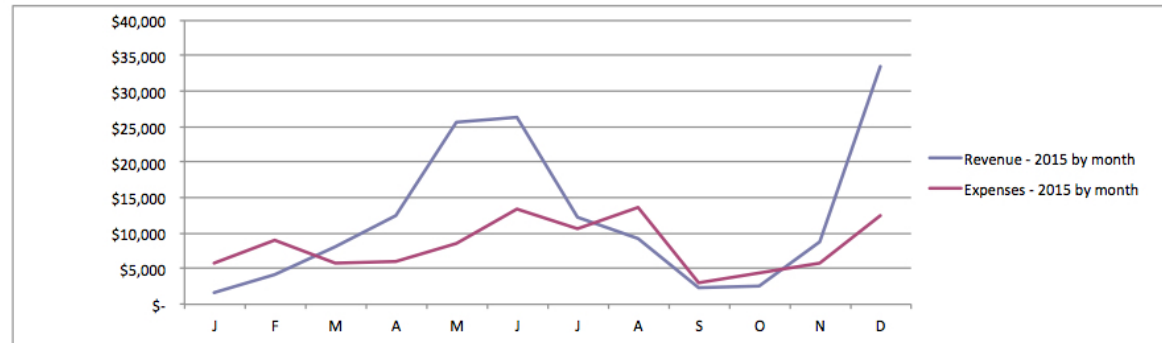
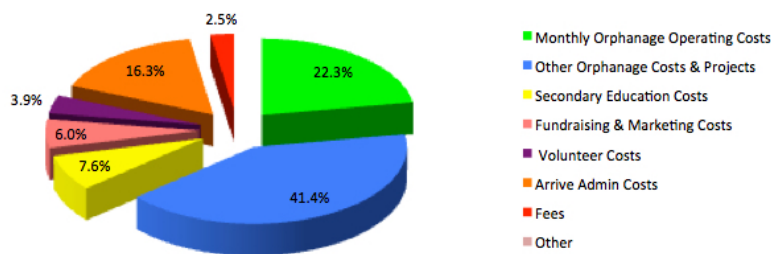




Expense Report 2015

Month	Total	Monthly Orphanage Operating Costs	Other Orphanage Costs & Projects	Secondary Education Costs	Fundraising & Marketing Costs	Volunteer Costs	Arrive Admin Costs	Fees	Other	
January 2015	\$5,882	\$1,818	\$2,666	\$-	\$-	\$-	\$1,250	\$148	\$-	
February	\$8,941	\$-	\$4,261	\$-	\$1,048	\$-	\$3,456	\$176	\$-	
March	\$5,898	\$4,350	\$-	\$-	\$1,253	\$-	\$20	\$275	\$-	
April	\$5,969	\$1,982	\$170	\$2,764	\$-	\$-	\$945	\$108	\$-	
May	\$8,624	\$-	\$7,078	\$-	\$-	\$1,051	\$290	\$204	\$-	
June	\$13,329	\$1,732	\$5,536	\$-	\$-	\$1,594	\$4,279	\$188	\$-	
July	\$10,596	\$1,771	\$7,349	\$-	\$-	\$966	\$150	\$359	\$-	
August	\$13,718	\$1,679	\$4,979	\$2,090	\$1,079	\$-	\$3,486	\$405	\$-	
September	\$2,982	\$1,902	\$464	\$-	\$228	\$-	\$150	\$239	\$-	
October	\$4,453	\$2,025	\$1,005	\$-	\$39	\$-	\$1,322	\$62	\$-	
November	\$5,848	\$2,395	\$2,020	\$-	\$1,205	\$-	\$160	\$68	\$-	
December	\$12,551	\$2,380	\$5,410	\$2,620	\$1,125	\$201	\$591	\$223	\$-	
	\$98,791	\$22,035	\$40,939	\$7,474	\$5,977	\$3,813	\$16,098	\$2,456	\$-	\$98,791
		22.3%	41.4%	7.6%	6.0%	3.9%	16.3%	2.5%	0.0%	100.0%
Net	\$48,153									

Expenses - by Category - 2015



Monthly Orphanage Operating Costs - Operation costs

Other Orphanage Costs and Projects - Purchase of livestock, tools and hoses, and anything which is not on the monthly operating budget but needed, and individual projects

Secondary Education Costs - Costs of a student's secondary education

Fundraising and Marketing Costs - Funds toward a campaign or fundraiser or for marketing purposes

Volunteer Costs - Accommodations, food, security, etc. for volunteers

Arrive Administrative Costs - Insurance, website, etc

Fees - Western Union, Chase Bank, and PayPal fees

Other - Misc. Expenses