



Work with HMAS Penguin to retain public parking when not required for Naval Purposes

In the long term work with council and sporting groups to relocate facilities to improve views

Landscape edge of oval to screen carparking

HMAS PENGUIN

Interpret former golf green

Pedestrian path

Car Parking in existing disturbed area

Consider traffic-calming measures

Investigate providing track through bush

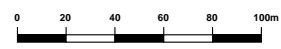
To Balmoral

To Chowder Bay

Remodel the intersection, possibly with a roundabout

Continue carpark use with improvements to surfacing, landscaping and stormwater management

OBELISK BAY



ASOPA: Adaptively reuse buildings for uses such as visitor accommodation, education, studios, offices. Some buildings may need to be replaced with new buildings of similar scale, form and materials. Retain hutted interconnected character. Retain tropical vegetation character.

Fig.15 Outcomes

COBBLERS BEACH

Track to Cobblers Beach

Possible new pavilion, amenities or visitors centre

MIDDLE HEAD OVAL

Guard House

Existing Car Park

Barbecue

Tennis courts

ASOPA

Possibly reinstate tennis court or relandscape

Obelisk

Work with NPWS to create integrated network of pathways

ASOPA:

Adaptively reuse buildings for uses such as visitor accommodation, education, studios, offices. Some buildings may need to be replaced with new buildings of similar scale, form and materials. Retain hutted interconnected character. Retain tropical vegetation character.

SYDNEY HARBOUR NATIONAL PARK

To Cobblers Beach

Possible adaptive reuse, or demolition of one or more buildings. Uses include visitor accommodation, education, offices, studios and similar.

Relandscape with more open character

Work with NPWS to partly reveal defensive ditch

Partly resurface for a civic space with provision for parking

Relandscape with open character to provide setting for fortification

Adaptive reuse as space that draws people to the park, for e.g. dining, gallery, functions etc..

Relandscape as an open space which allows occasional event car parking.

Remove fences within and around the site

10 Terminal: Adaptive reuse for uses such as visitor accommodation, dining, functions, offices, studios, education or similar. Allow for possible new building.

LEGEND

- Existing vegetation
- Proposed planting
- Grassed area
- Adjacent vegetation
- Pedestrian pathways
- Pedestrian crossing/threshold
- Shared access
- Vehicular access
- Existing building
- Building to be removed
- Possible new building area
- Building retention to be reviewed
- SHFT boundary
- Possible new pathway
- Existing Tracks