

THE NORTH CHANNEL



Topics

- **The North Channel**
- **Getting there**
- **What about a boat**
- **Customs**
- **Do we have to anchor out every night**
- **What to take**
- **Five things to do before you leave**
- **Two sample cruise itineraries**

Getting There

By water



70 nm Long; 20 nm Wide



History





CANADA

ONTARIO - LAKE HURON

GEORGIAN BAY TO CLAPPERTON ISLAND

Surveyed by Staff Commander J.G. Boulton, R.N.,
assisted by W.J. Stewart and D.C. Campbell, 1885

The portion engraved lightly is taken from a survey by Lieut. H.W. Bayfield R.N. 1822

Bearings refer to the True Compass and are given from Seaward (thus 295° etc.)

SOUNDINGS IN FATHOMS

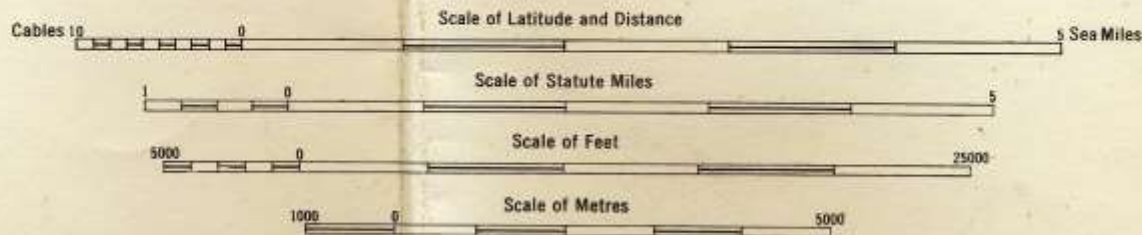
reduced to a datum which is the level surface of Lake Huron when the Canadian Hydrographic Service gauge at Goderich reads 581.5 feet (177.2 metres) (See CAUTION NO. 1)

Water areas with depths of 5 fathoms and less are tinted blue

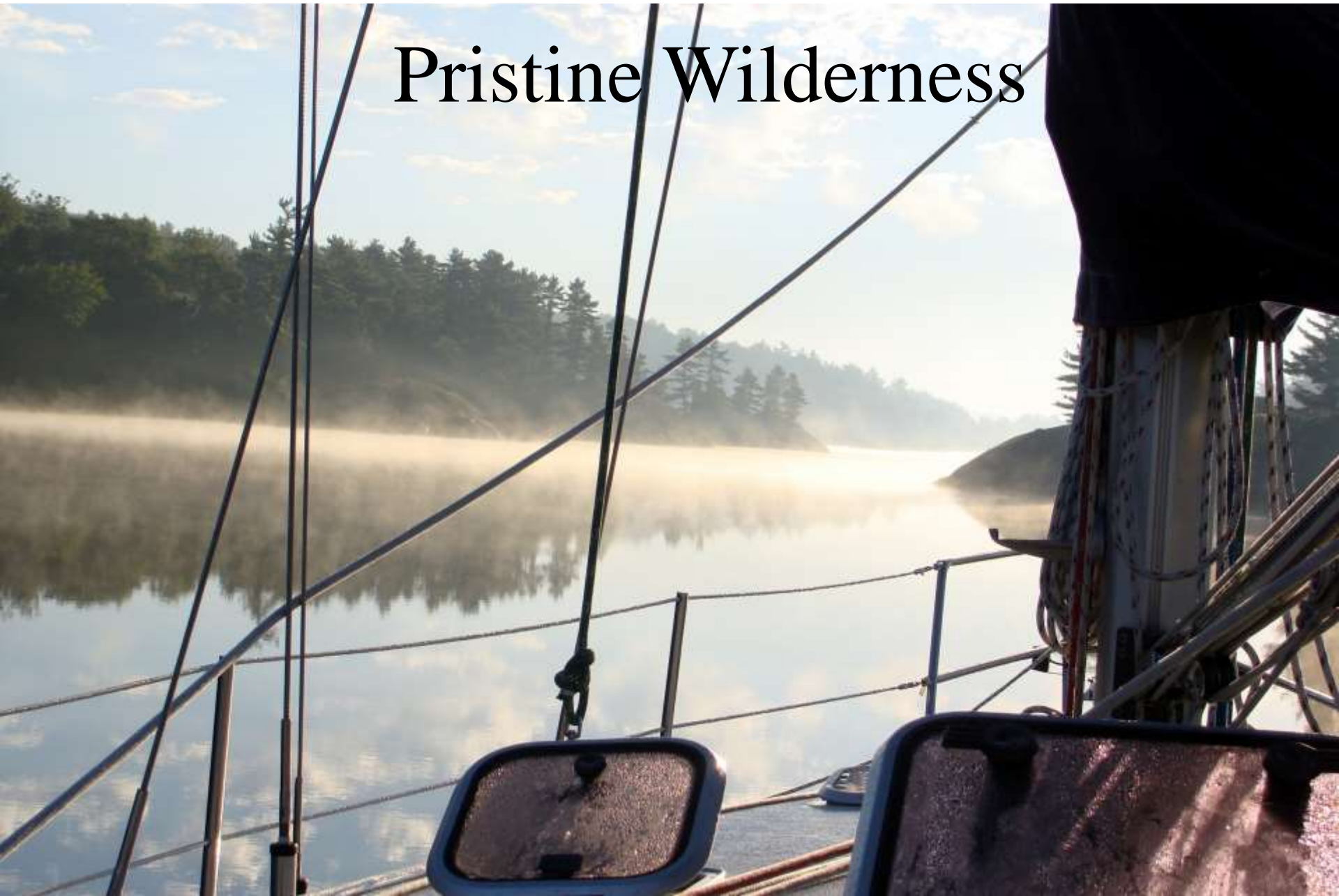
Heights are expressed in feet above the datum of soundings

For complete list of Symbols and Abbreviations see Chart No. 1

Natural Scale 1:90 381



Pristine Wilderness



Pristine Wilderness with

Well-Buoyed Channels



Pristine Wilderness with Restaurants



Pristine Wilderness with

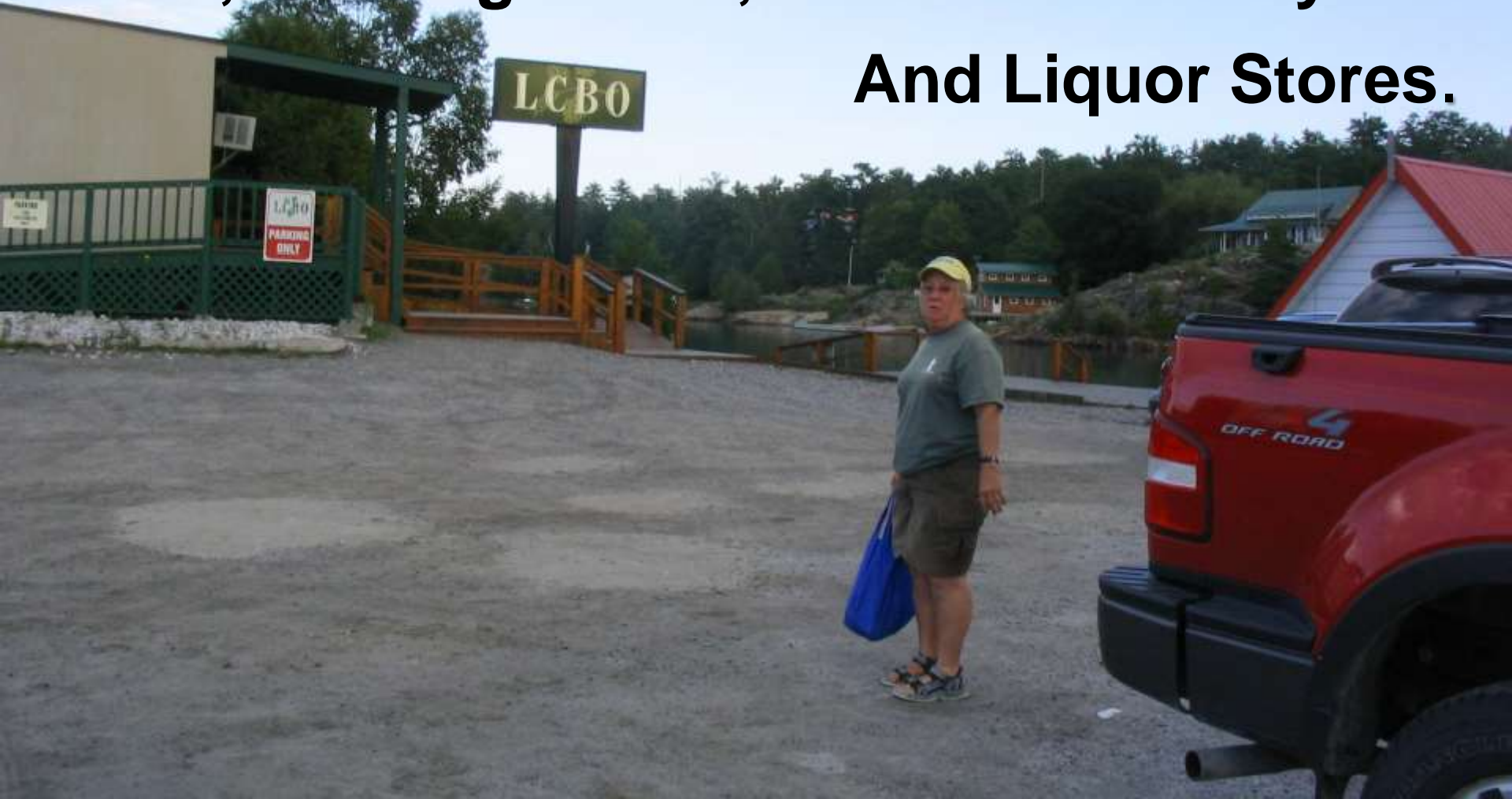
Close by Shopping



Plus

Banks, cash stations, restaurants, grocery stores, clothing stores, etc. found nearby

And Liquor Stores.

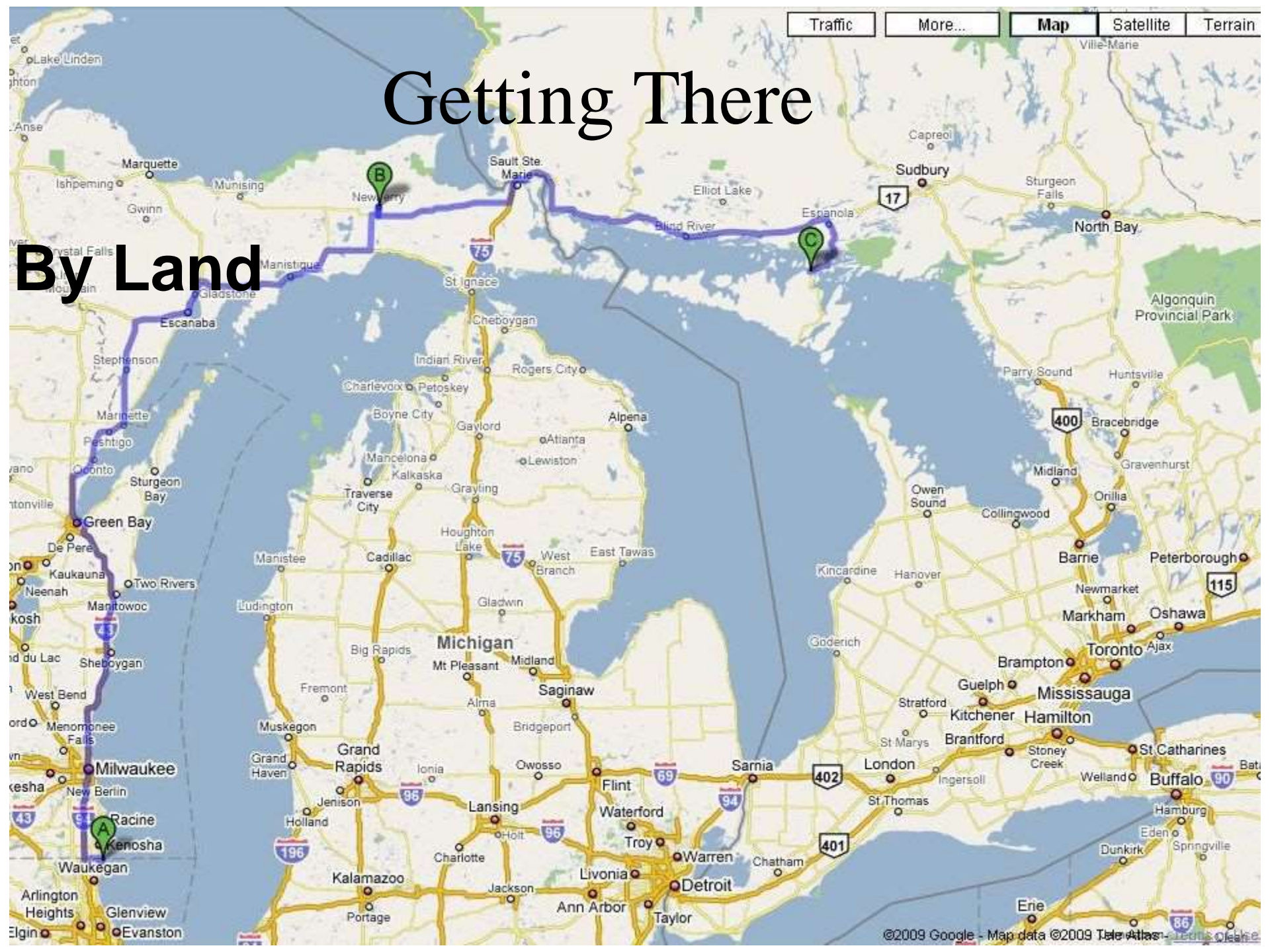


**Pristine Wilderness With
Excellent marine services available
-- Mechanics, fiberglass repair, props!!**



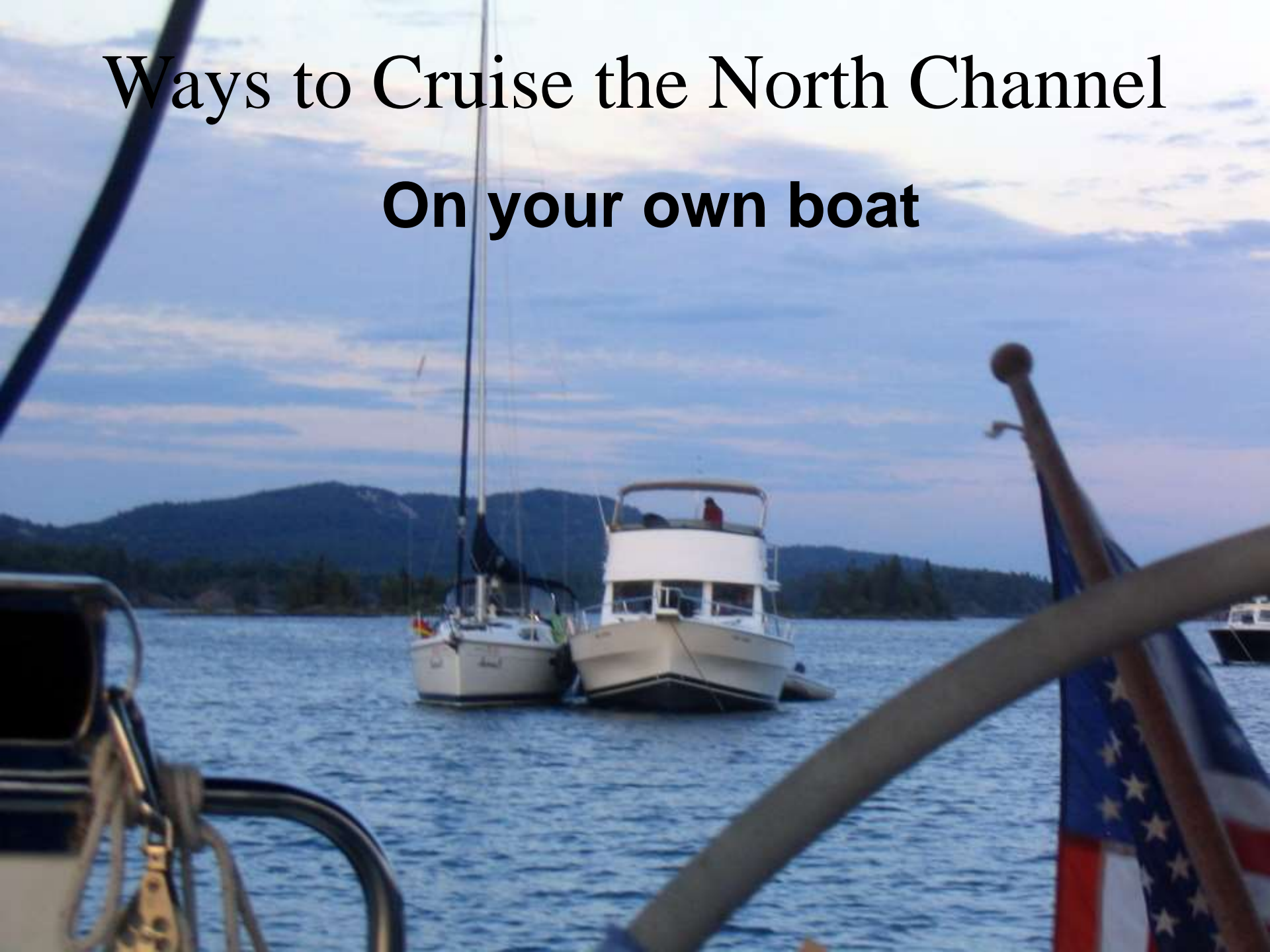
Getting There

By Land



Ways to Cruise the North Channel

On your own boat



Ways to Cruise the North Channel

Trailable Boat



Ways to Cruise the North Channel

Trailerable Boat Plus Hotel



Ways to Cruise the North Channel

By Charter

Canadian Yacht Charters

<https://www.cycnorth.com>

11 Sloops - 31' to 47'

3 Trawlers - 35' to 39'

2 Cats - 1 Power; 2 Sail

268 Sea Ray



Us



Cruises in the North Channel

- 1988
- 2004
- 2007 -- 2012



Canadian Border Crossing

Getting in is easy

<https://www.cbsa-asfc.gc.ca/menu-eng.html>

– By land: Sault St. Marie



Canadian Border Crossing

Getting in is easy

www.cbsa.gc.ca/travel-voyage/pb-pp-eng.html

- **By water: Port of Entry, Cell Phone?**
 - Full name, date of birth and citizenship;
 - length and purpose of the stay in Canada;
 - destination;
 - Acceptable identification eg passport

Once you touch (shore or anchor in Canada), you're in Canada.

Once you're in Canada, don't wait to check in

Canadian Customs

Canadian Restrictions

- **What you can bring across the border is getting more and more complex and changes daily.**
 - **In most cases it's not a problem but check the websites before you go**
 - **Prohibited Items**
 - **Duties on Items in excess of "Duty Free" allowances**
 - **Pets**
 - **Medications (in original bottle)**
 - **Firearms at own risk**
- 

Canadian Customs

After checking in
display the Canadian flag



Once you get into Canada
You've got to come back



U. S. Border Crossing / Customs

www.cbp.gov/travel/pleasure-boats-private-flyers

- **Please check with the U.S. government directly for current information. Border security requirements change frequently.**
- **Customs decal about \$28.84; Buy before you leave <https://dtops.cbp.dhs.gov> but can buy at port of entry (Sault St. Marie)**

U.S. Entry / Customs

- **Video Phone (Ipad)**
 - **Drummond Island,**
 - **Detour Village,**
 - **Mackinac Island,**
- **Nexus**
- **CBP Roam**



CBP ROAM App expands reach in Michigan, Minnesota

Wednesday, June 5, 2019 by [Chris Galford](#)



The Reporting Offside Arrival-Mobile (ROAM) application, used by U.S. Customs and Border Protection (CBP) Field Operations to report small boats, has expanded its capabilities to new sites in Michigan and Minnesota.

In Michigan, the app now reaches four sites in the Sault Ste. Marie area: the Rogers City Marina, Detour Village, Drummond Island Yacht Haven, and Mackinac Island. Minnesota will see the application expanded to the Arrowhead region.

“From an officer standpoint this is much-needed technology,” Arrowhead Area Port Director Jason Schmeiz said. “From the clarity of the video to the ease of use for the traveler, CBP ROAM has strengthened border security in these remote areas while facilitating legitimate travel and trade.”

Boaters – Looking for a faster way to report your U.S. entry?

CBP ROAM™
The Reporting Offside Arrival-Mobile (ROAM) application allows boaters to report their arrival to CBP to fulfill entry reporting requirements.
Available for your mobile device at [www.cbp.gov/roam](#)

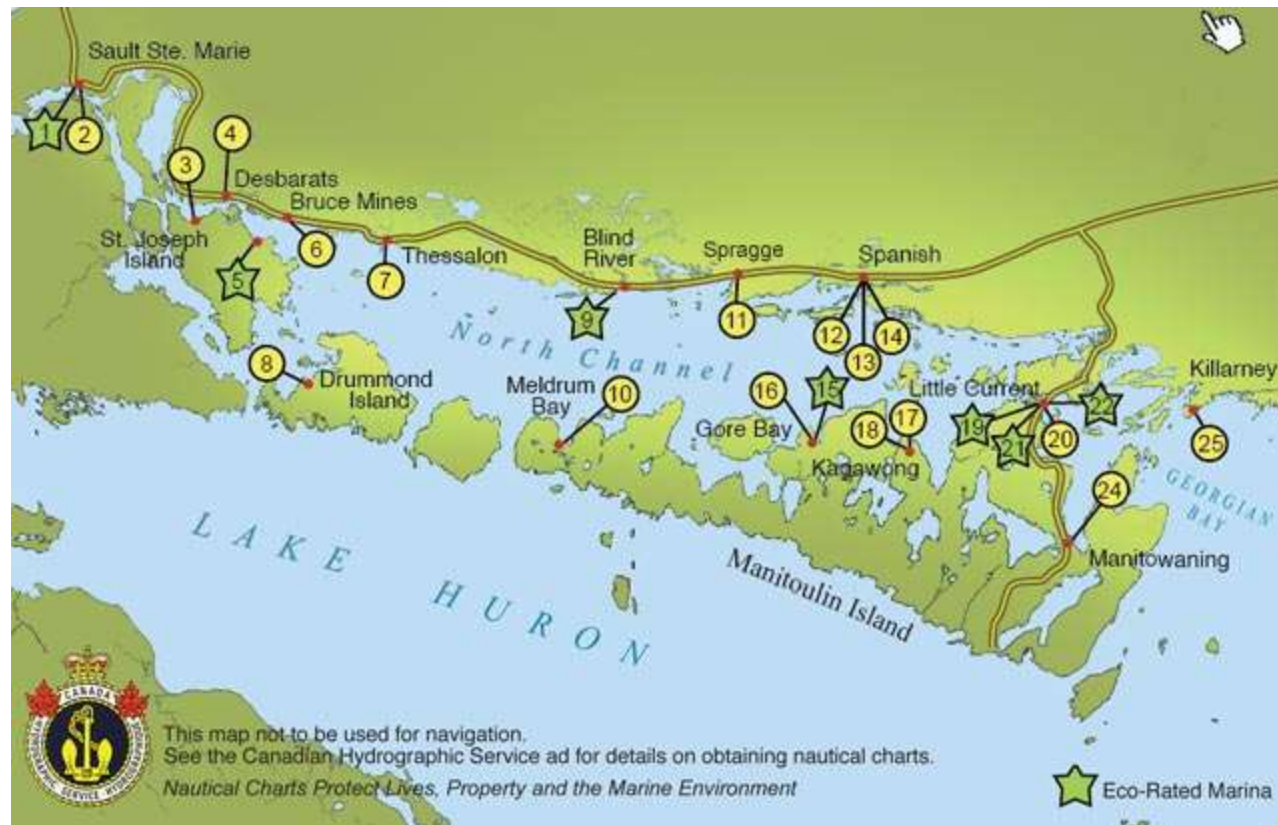
Fast • Convenient • Mobile

CBP

Do we have to anchor out (every night?)

Marinas, Fuel and Provisioning

<http://thenorthchannel.ca/>



Thessalon

Port of Entry



Meldrum Bay

Port of Entry



Blind River

Port of Entry



North Channel Yacht Club



Spanish



Gore Bay

Port of Entry



Kagawong



Little Current

Port of Entry



Killarney

NOT a Port of Entry Use
Tobermory if coming from the
east



Manitowaning



What to Take

(by no means a complete list)

A Good Boat & A Good Dinghy



What to Take

Communications



Portable VHF



A photograph of a man with a white beard and a red baseball cap, wearing a light blue t-shirt, standing on the deck of a boat. He is holding a black mobile phone to his ear. The boat has a black canvas cover over the cockpit area. In the background, there is a blue sky and a body of water with a distant shoreline. An American flag is visible on a pole behind the man. The text "Cellular service is available But expensive and limited" is overlaid in the center of the image.

**Cellular service is available
But expensive and limited**

Emergency Contacts



Navigation

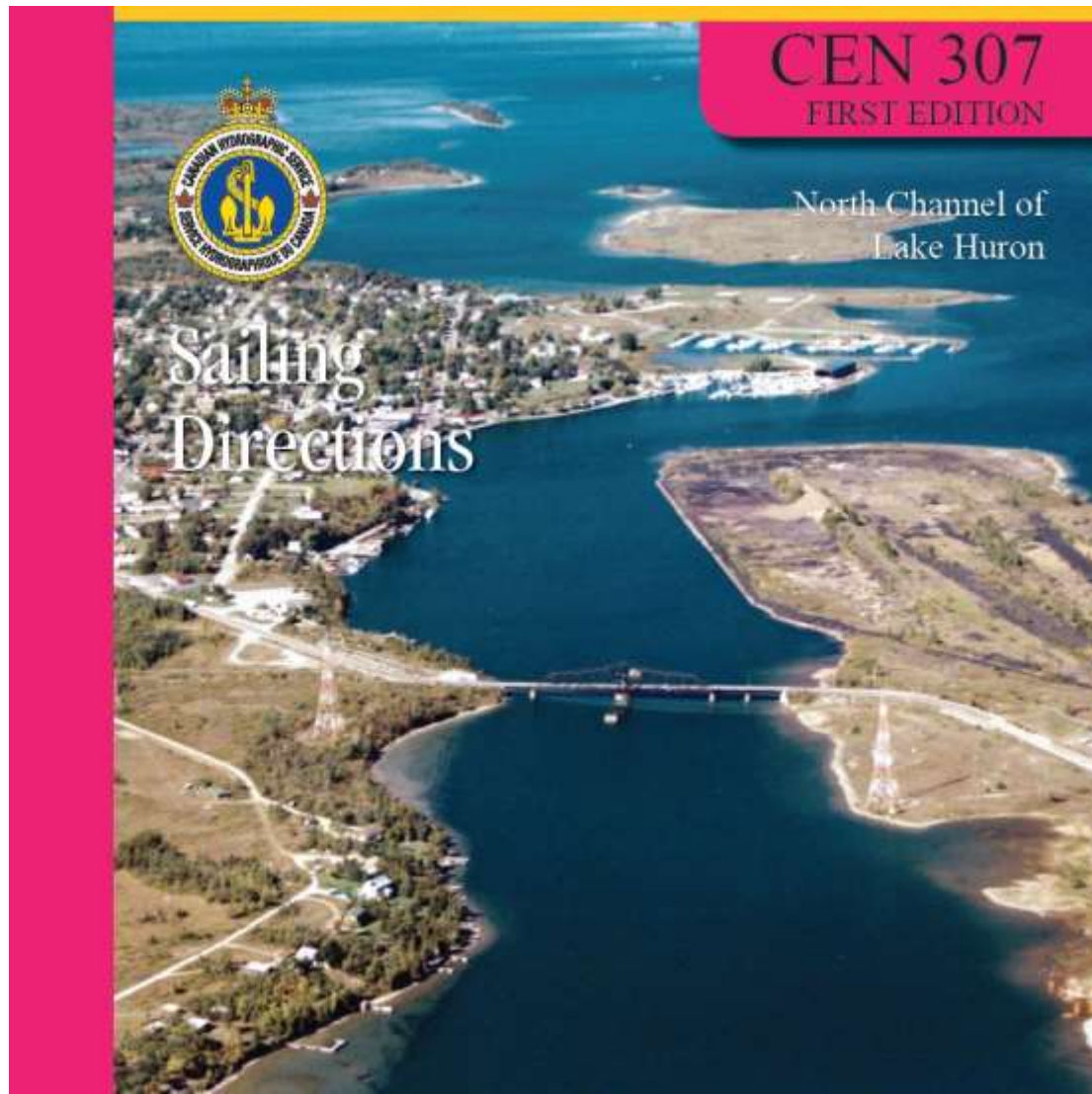
Charts and/or Chart Book

- **Danger: Some are in feet, some in fathoms and some metric**



Navigation

<http://www.charts.gc.ca/publications/sailingdirections-instructionsnautiques-eng.asp>



Navigation

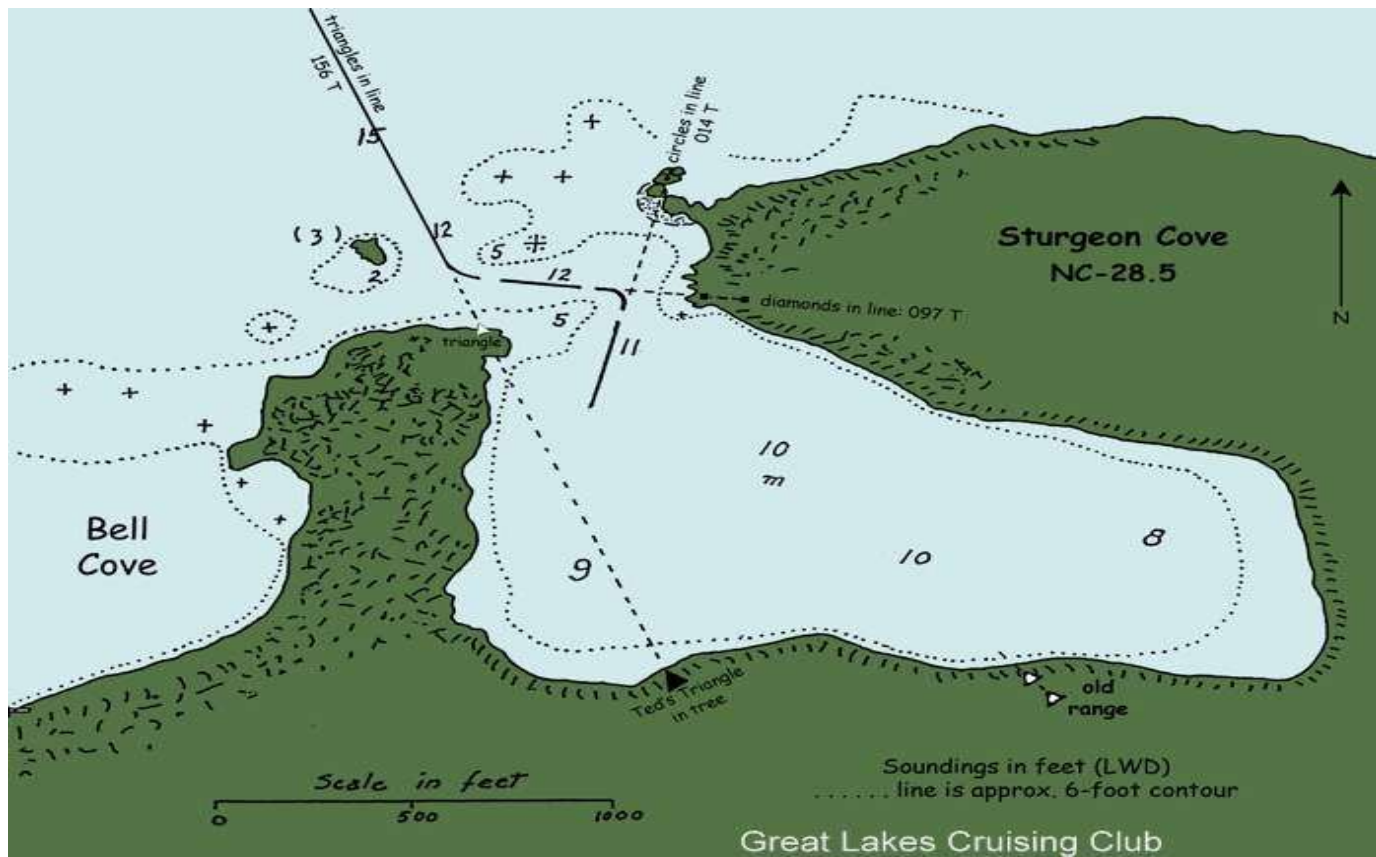
- **Tablet Apps**
- **Chart Plotter Chip**

Navigation

Cruising Guides

Great Lakes Cruising Club:

<http://www.glcclub.com/> \$125 annual + \$90 initiation



Navigation

Cruising Guides

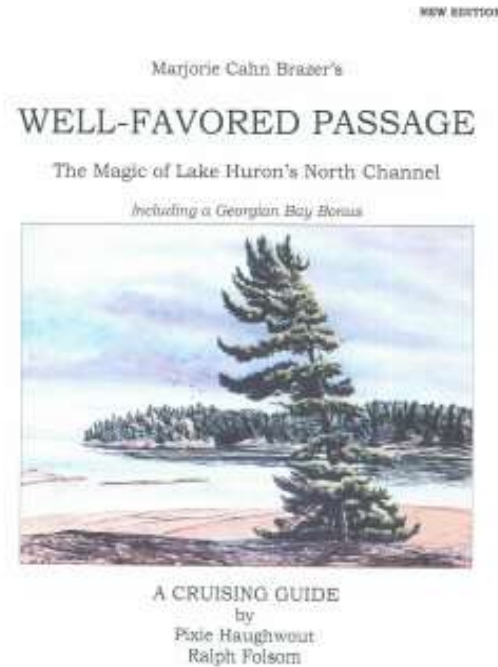
2014 Ports Book: Georgian Bay, The North Channel
and Lake Huron: <http://www.portsbooks.com/> \$29.85 +
S&H



Navigation

Cruising Guides

- **Well Favored Passage:**
 - Amazon [\\$24.95 + S&H](#)



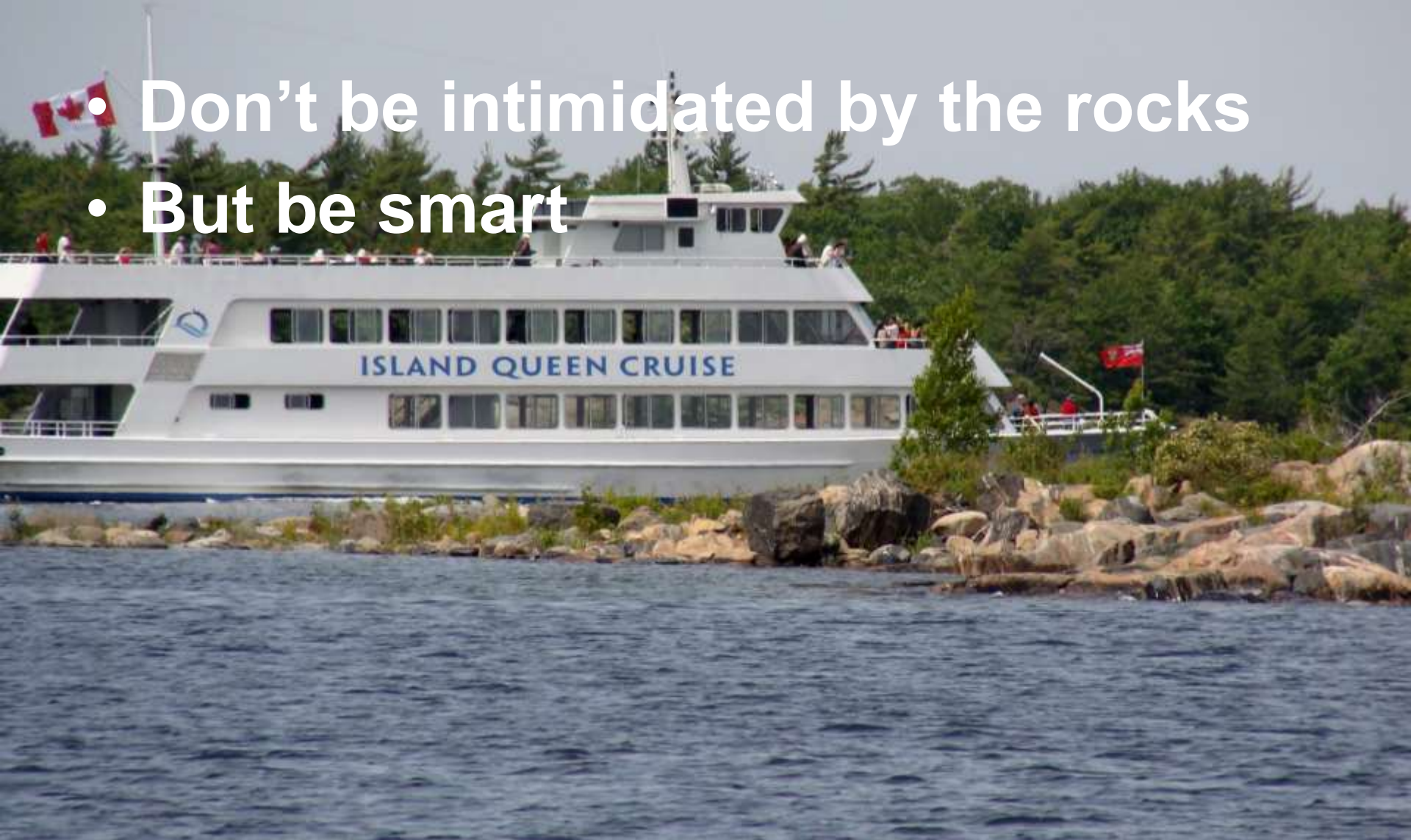
Navigation

Caveats

- **Canadian charts are good but you have to use them.**
- **Electronics charts are good BUT**
 - **GPS may be off due to magnetic anomalies so keep your eyes out of the cockpit**
 - **Autopilots are dangerous around rocks**
- **Slow down**
- **If gunk holing get some guides**

Navigation

- Don't be intimidated by the rocks
- But be smart



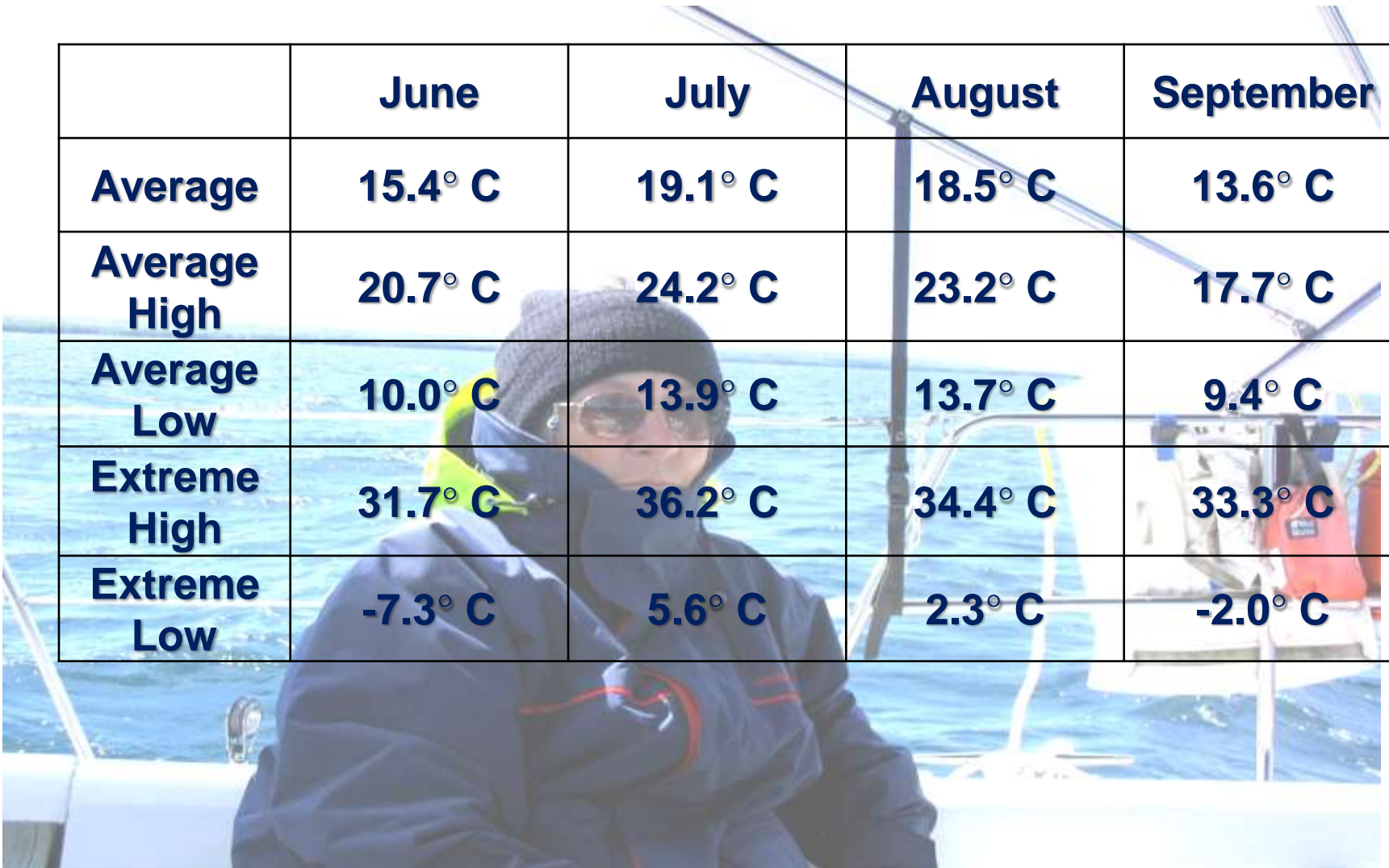
Provisioning

What we do



Clothing

	June	July	August	September
Average	15.4° C	19.1° C	18.5° C	13.6° C
Average High	20.7° C	24.2° C	23.2° C	17.7° C
Average Low	10.0° C	13.9° C	13.7° C	9.4° C
Extreme High	31.7° C	36.2° C	34.4° C	33.3° C
Extreme Low	-7.3° C	5.6° C	2.3° C	-2.0° C



Clothing

	June	July	August	September
Average	15.4° C	19.1° C	18.5° C	13.6° C
Average High	20.7° C	24.2° C	23.2° C	17.7° C
Average Low	10.0° C	13.9° C	13.7° C	9.4° C
Extreme High	31.7° C	36.2° C	34.4° C	33.3° C
Extreme Low	-7.3° C	5.6° C	2.3° C	-2.0° C

Kayaks
Swim wear
Water toys



Bikes?



Fishing



Hiking Gear



Hiking Gear



Hiking Gear



Wi-Fi available



Bug spray



**Books,
Games,
etc.**



Happy Hour



Five Things to Do Before Leaving the North Channel



See The Benjamins and/or



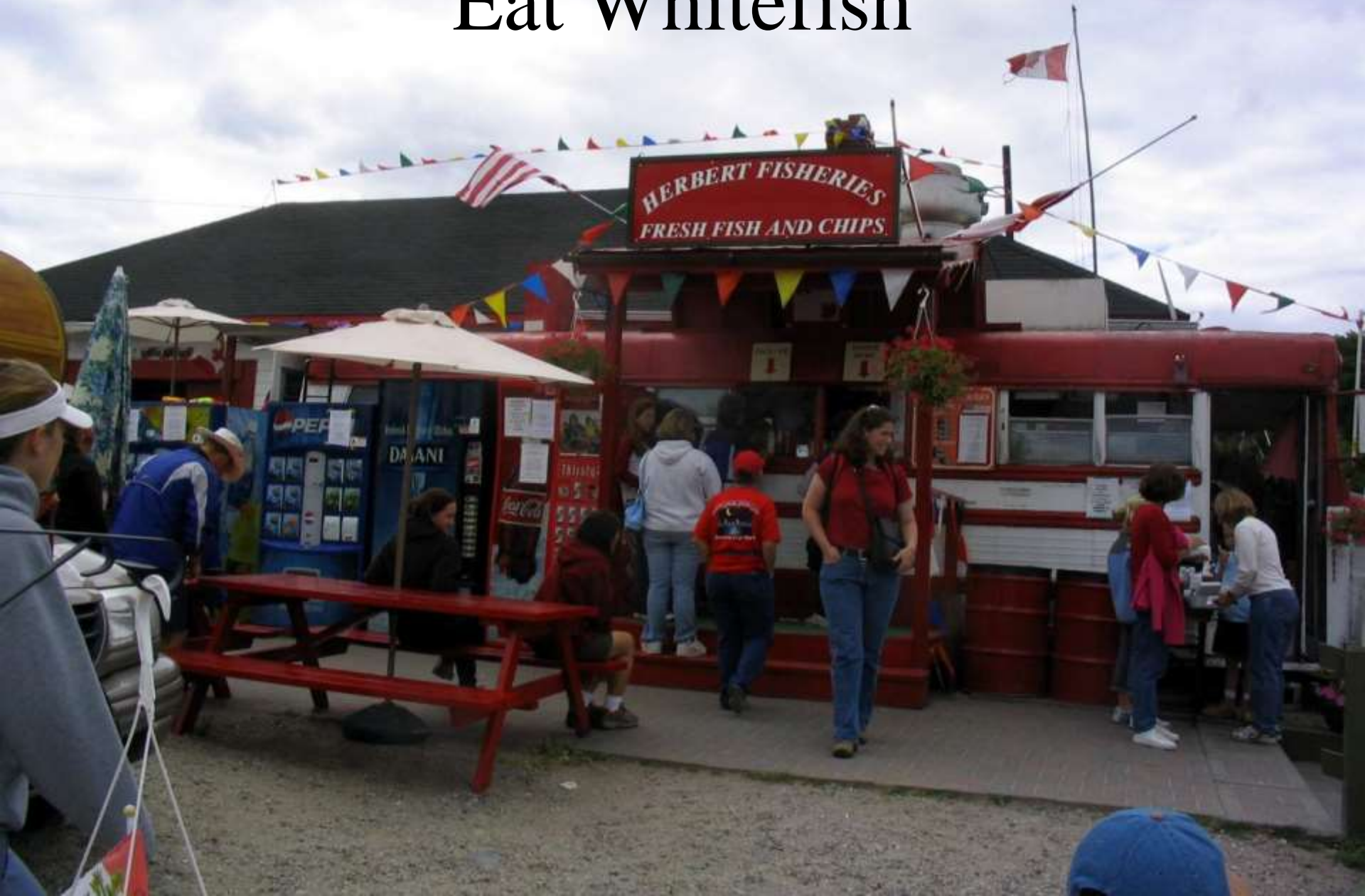
The Pool



Spend at least one night at anchor



Eat Whitefish



Look for blueberries



Listen to the Cruisers Net





Photo by Karen J Hansen

LCYC Cruisers' Net 16th Year of Broadcasting

VHF Channel 71, July & August

@ 9AM for the latest on:
Weather; News of the World;
Sports Scores;
Business Reports;
Manitoulin Happenings;
Upcoming Events.
Registered with the
Coast Guard &
Air Search & Rescue.

5,914 Call-Ins in 2018

Net Controller: Roy Eaton
roy.eaton@sympatico.ca
Phone 705-368-2148

Broadcast from the Anchor Inn
2nd floor Conference Room



Little Current Yacht Club

2019 Event Schedule

Club Race Schedule:

Cooper Cup June 22
Loco Beanz Coffee Cup June 23
NC Race Week July 22-26
Manitoulin Brewing Race Sept. 7
Anchor Inn/Labatt Fall Classic
Sept. 8

Other Events:

Launch Party June 1st
@ the Anchor Inn

Cruisers' Net Rendezvous
February 20 in Punta Gorda
@ The Laishley Crab House
July 29 & August 26 in Little Current

'Appy Hour @ the Anchor Inn
Fridays, 3-5 PM, July & August

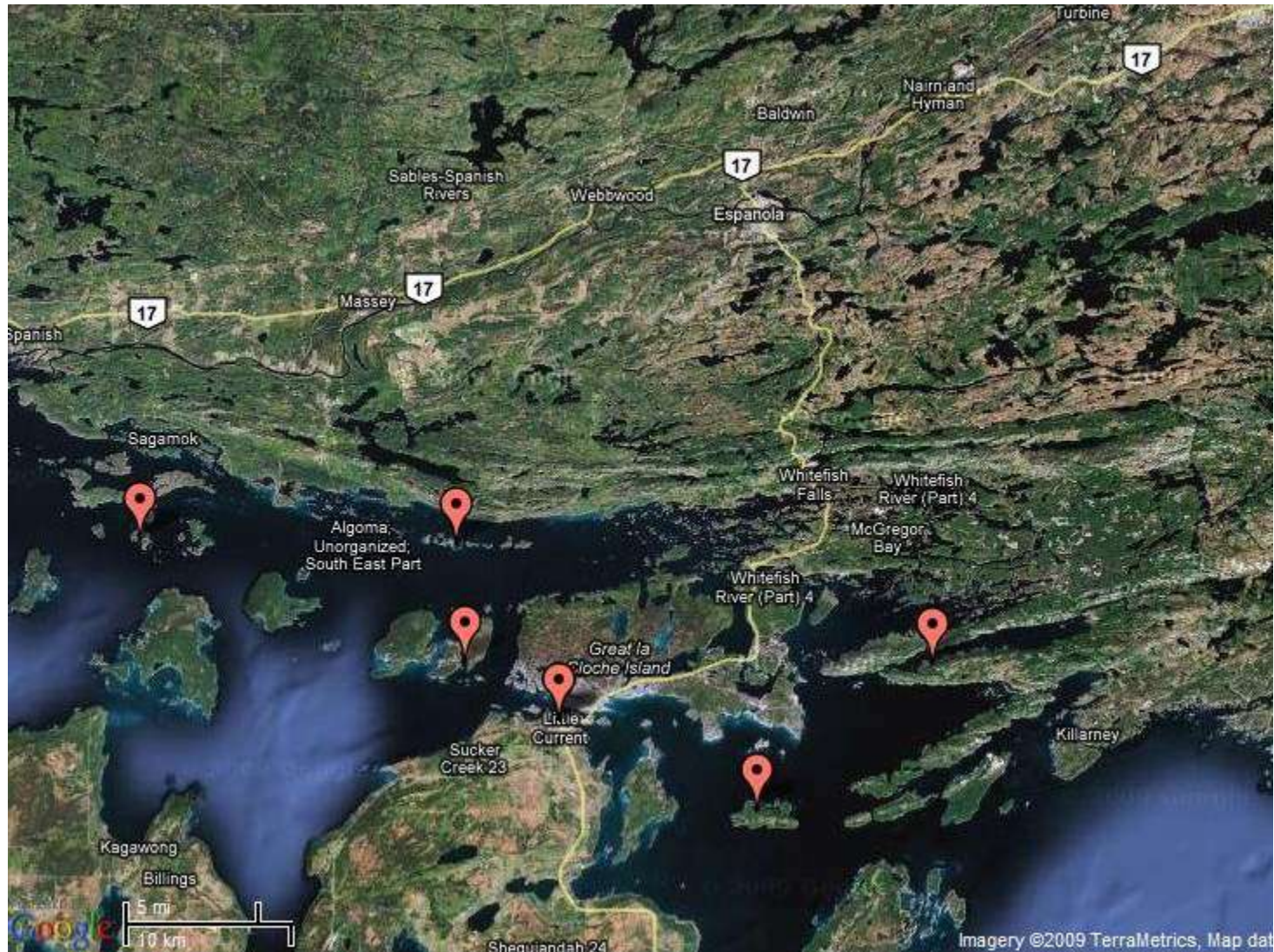
Listen Fridays for "Question of the
Day" to win a prize from Turners.

The Shop across from the Ships



...a piece of Island history

Sample week cruise starting and ending in Little Current



Day 1: Browning Cove

7.9 nm east of Little Current





Day 2: Baie Fine (Marianne Cove)

8.9 nm

Day 2: Baie Fine (Topaz Lake)

Hike to Topaz Lake and have a swim



Day 3: Louisa Island

22.3 nm - west through Little Current



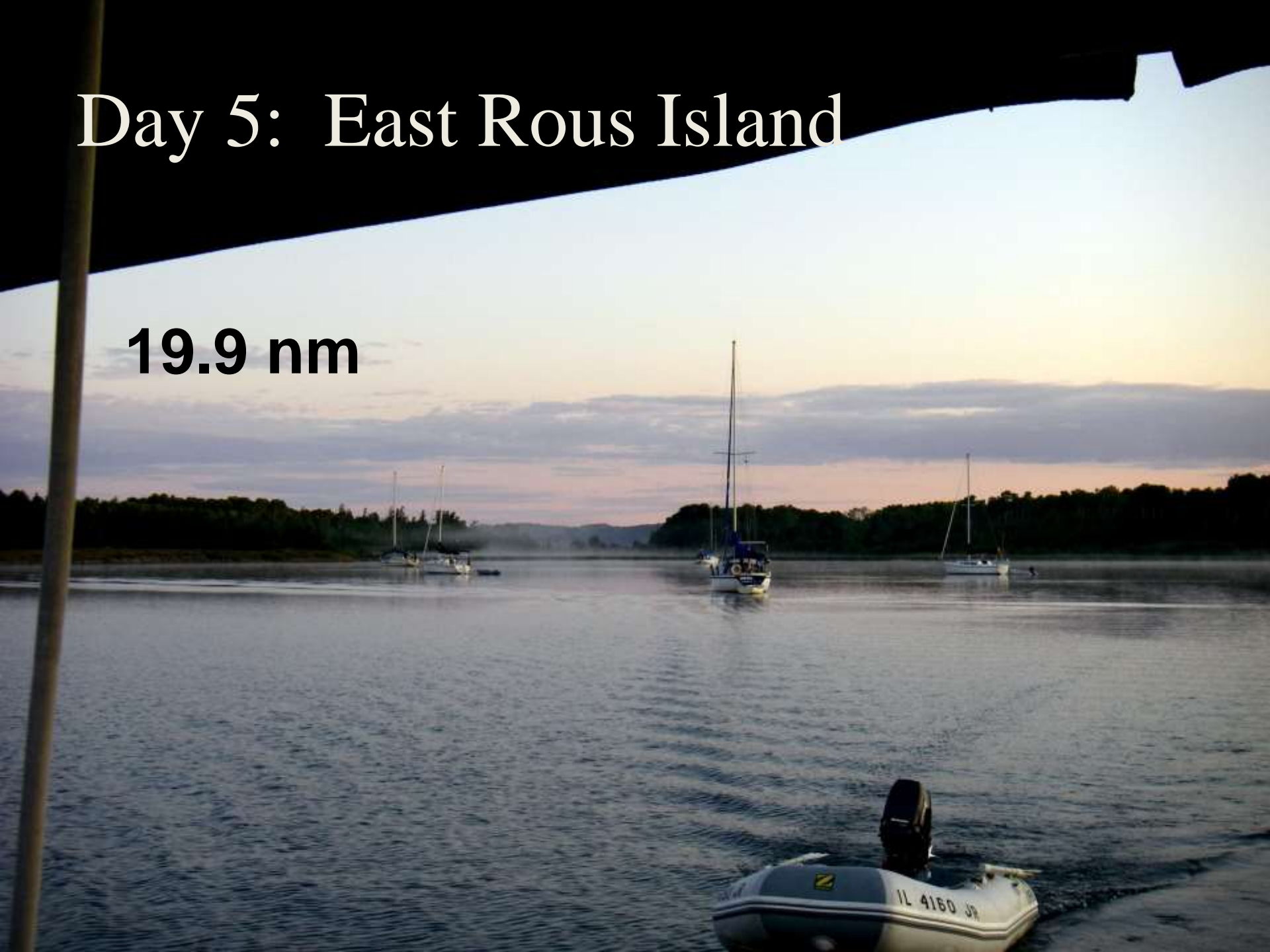
Day 4: South Benjamin Island

14.9 nm



Day 5: East Rous Island

19.9 nm

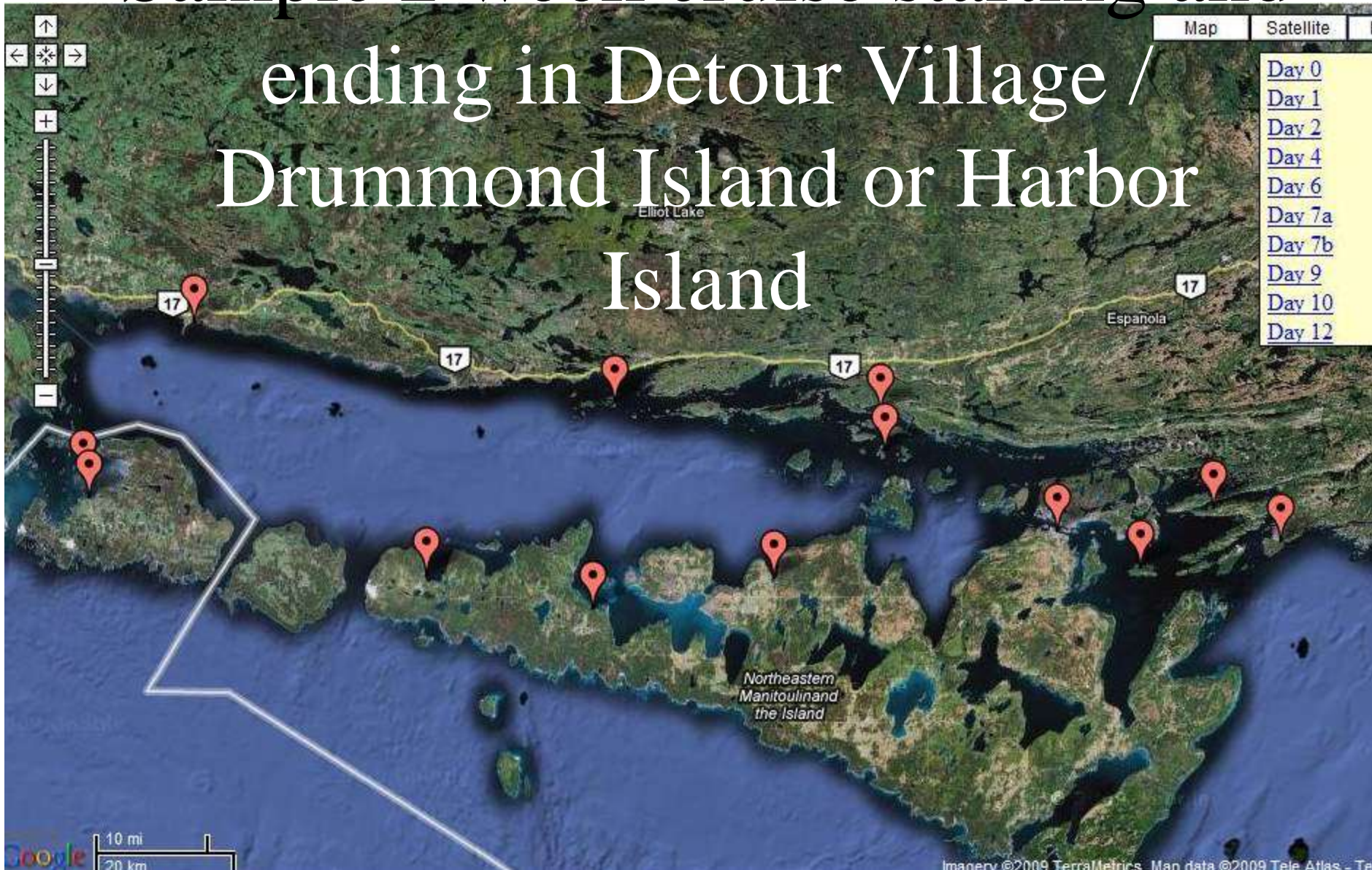


Day 6: Little Current

4.42 nm



Sample 2 week cruise starting and ending in Detour Village / Drummond Island or Harbor Island



Day 1: Thessalon -17 nm



➤ **Check into Canada**

➤ **Good for additional provisioning**

Day 2: Turnbull Island - 35 nm

**Marina alternative is Blind River - 27
nm**



Day 3: Explore Turnbull or
take a short hop to

Long Point Cove - 5 nm, or



**North Channel Yacht Club (marina),
or**



Beardrop Harbour - 7 nm



Day 4: Sail through the Whalesback
Channel to Oak Bay - 25 nm

Marina alternative is Spanish

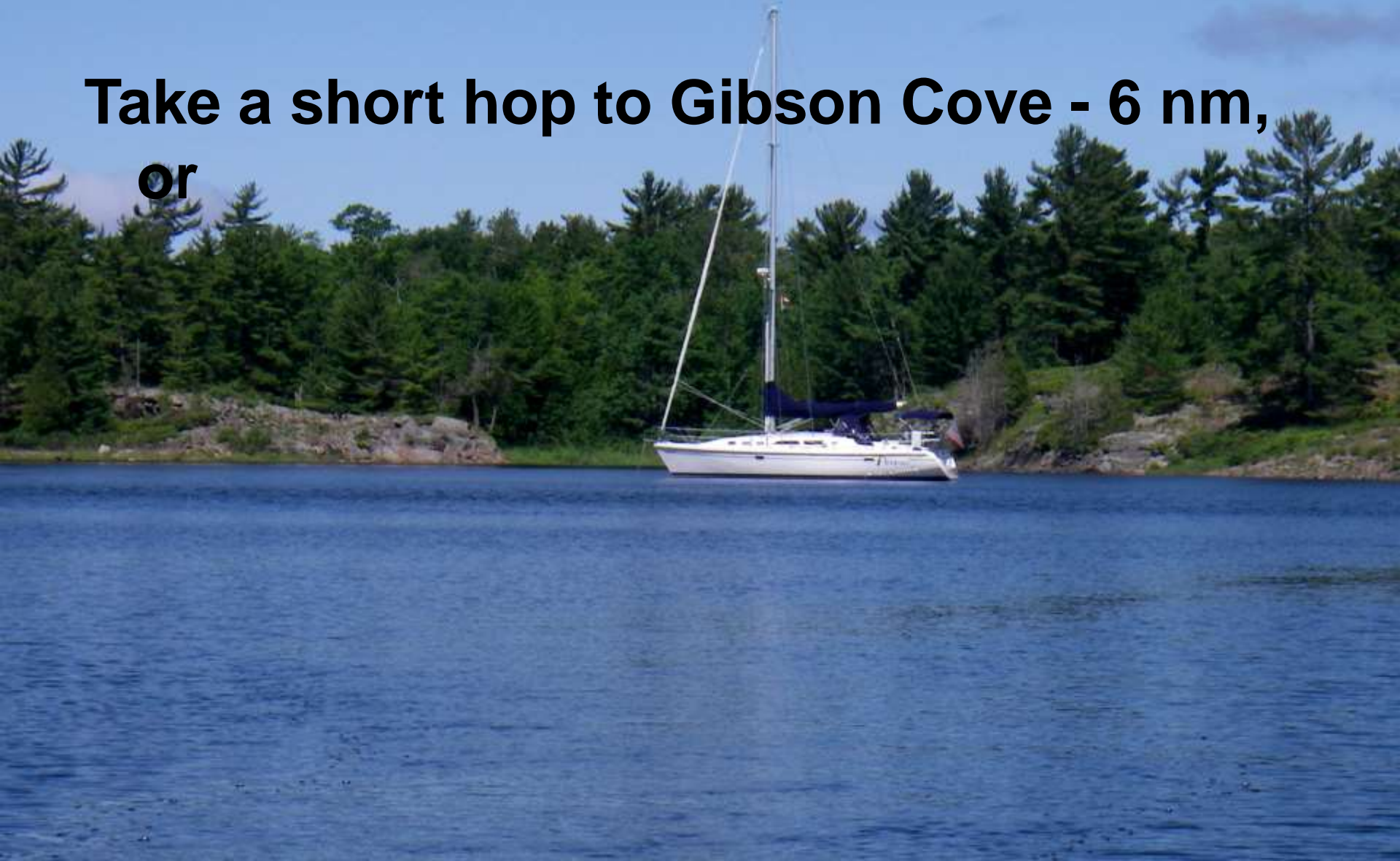


Day 5: Explore

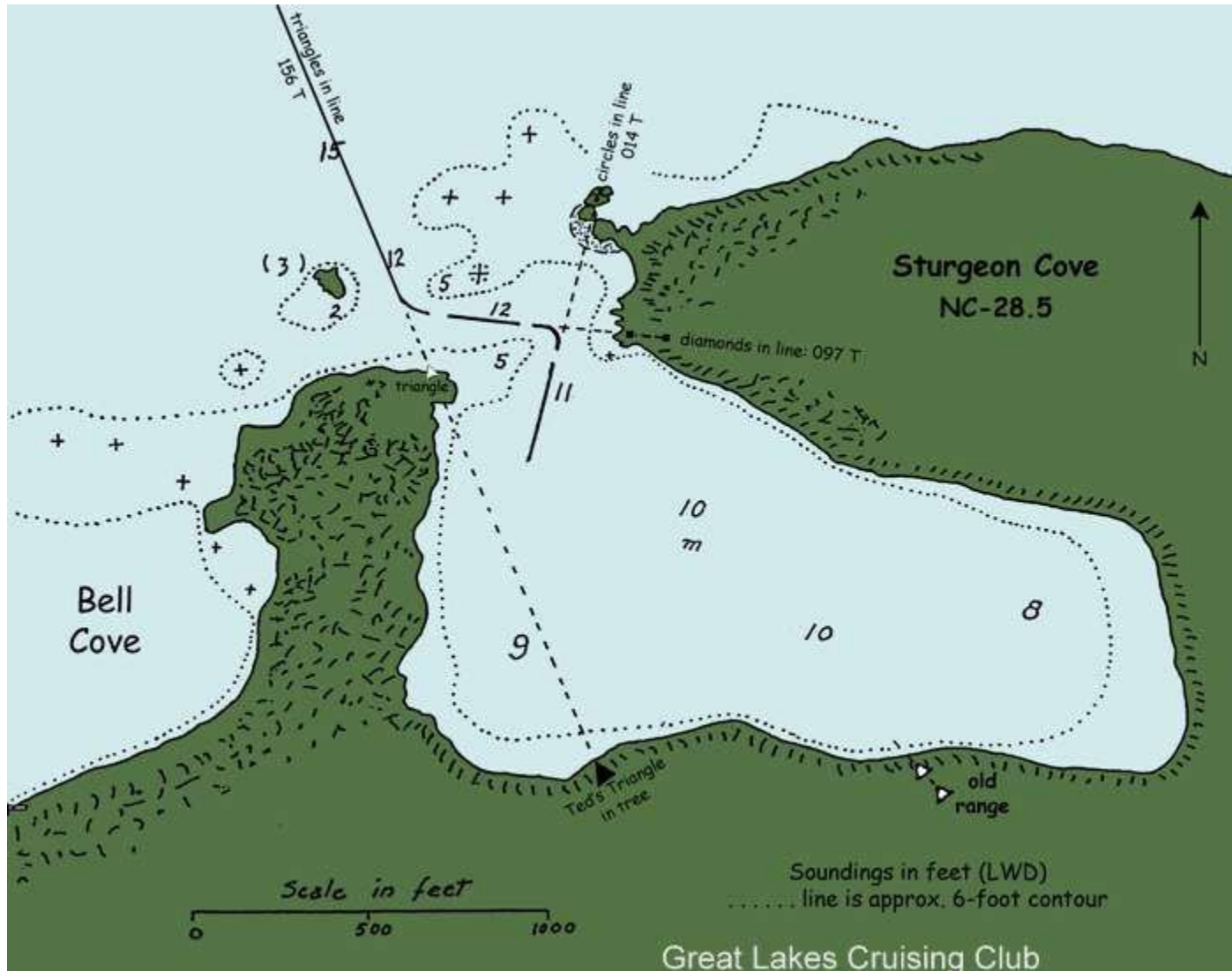
Oak Bay, or



**Take a short hop to Gibson Cove - 6 nm,
or**

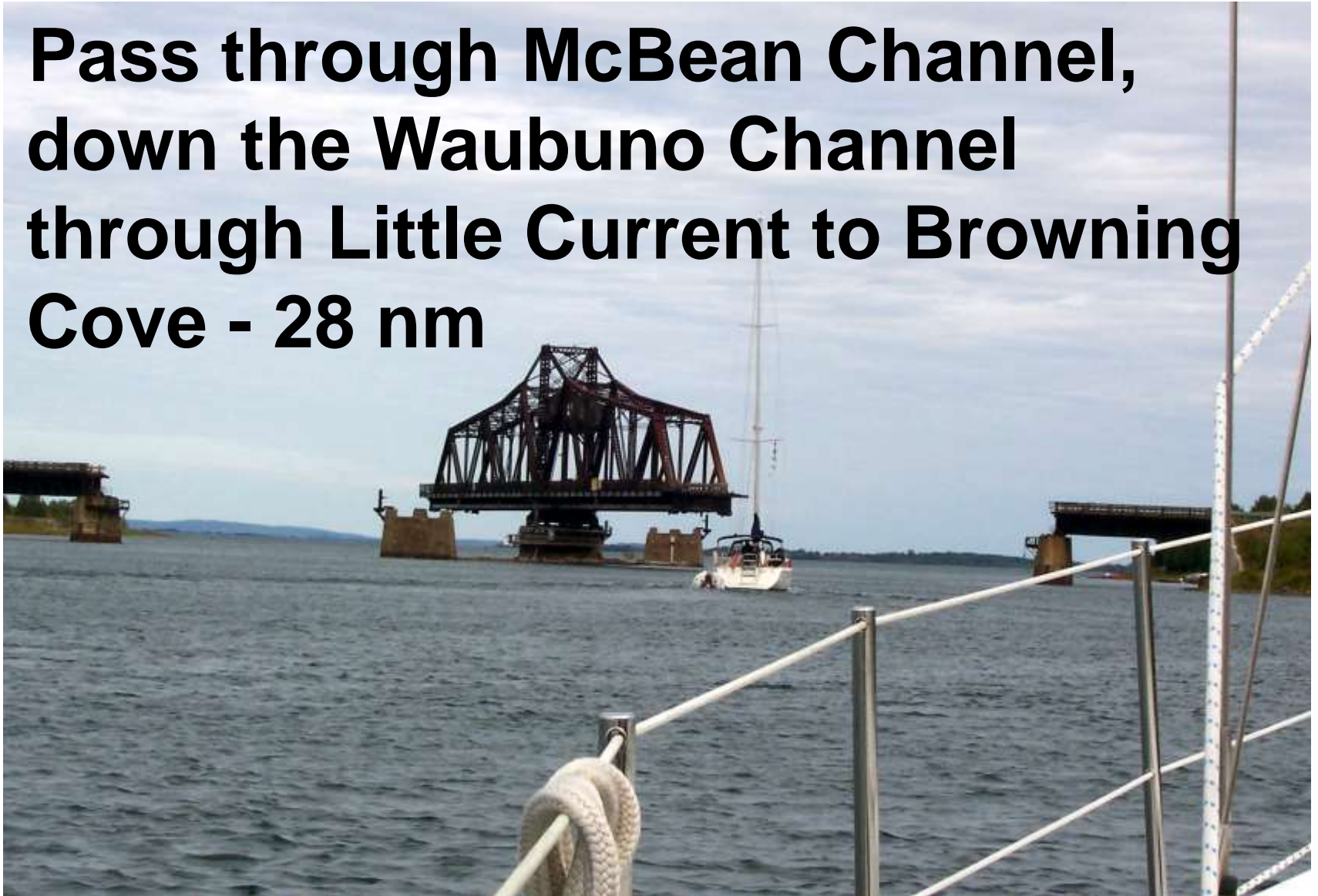


Take a longer hop to Louisa Island, Bell Cove, Sturgeon Cove, etc.



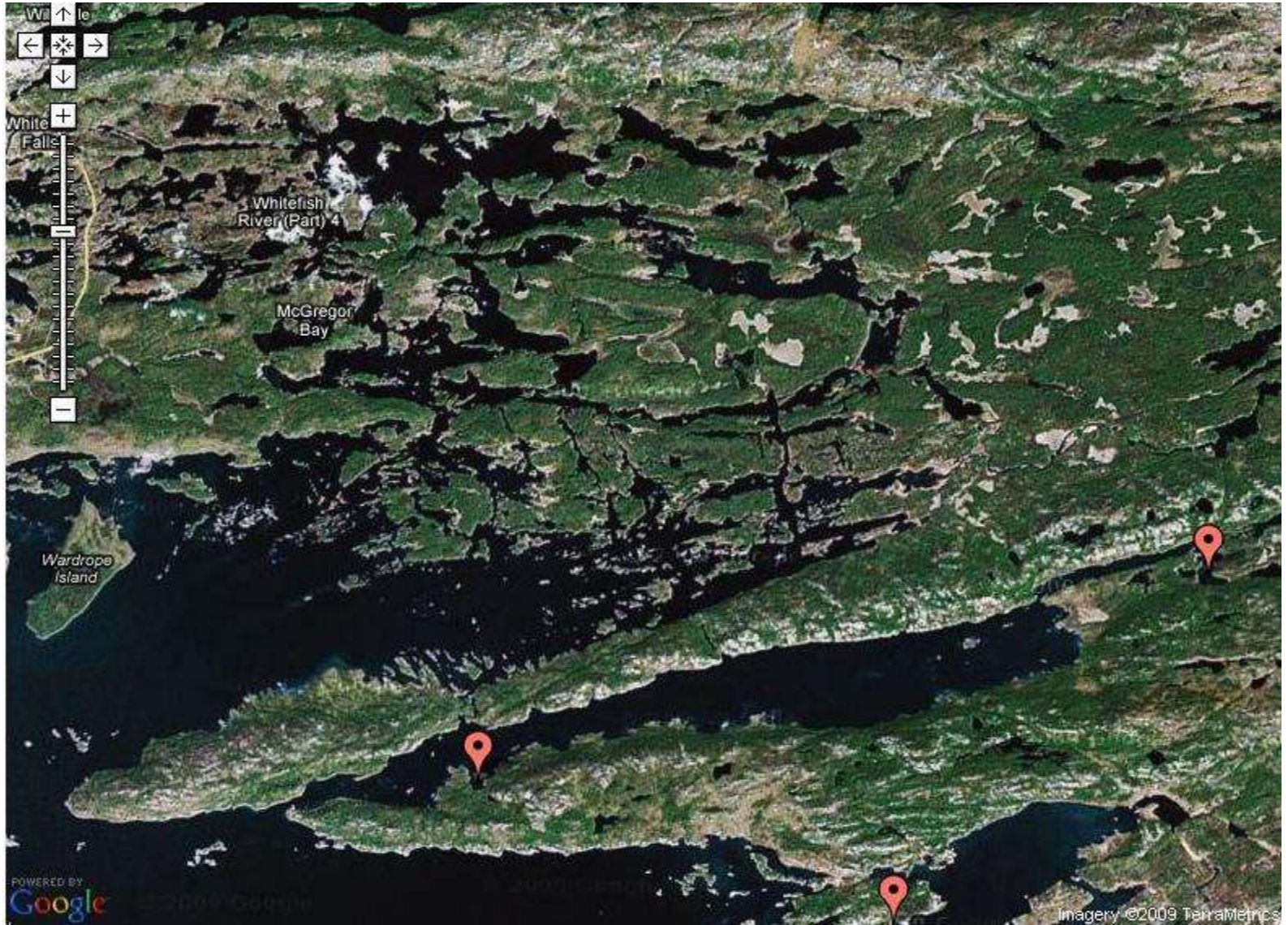
Day 6: Continue to Browning Cove

**Pass through McBean Channel,
down the Waubuno Channel
through Little Current to Browning
Cove - 28 nm**



Day 7: Baie Fine - 8 nm

The Pool is 9 nm miles from Marianne Cove

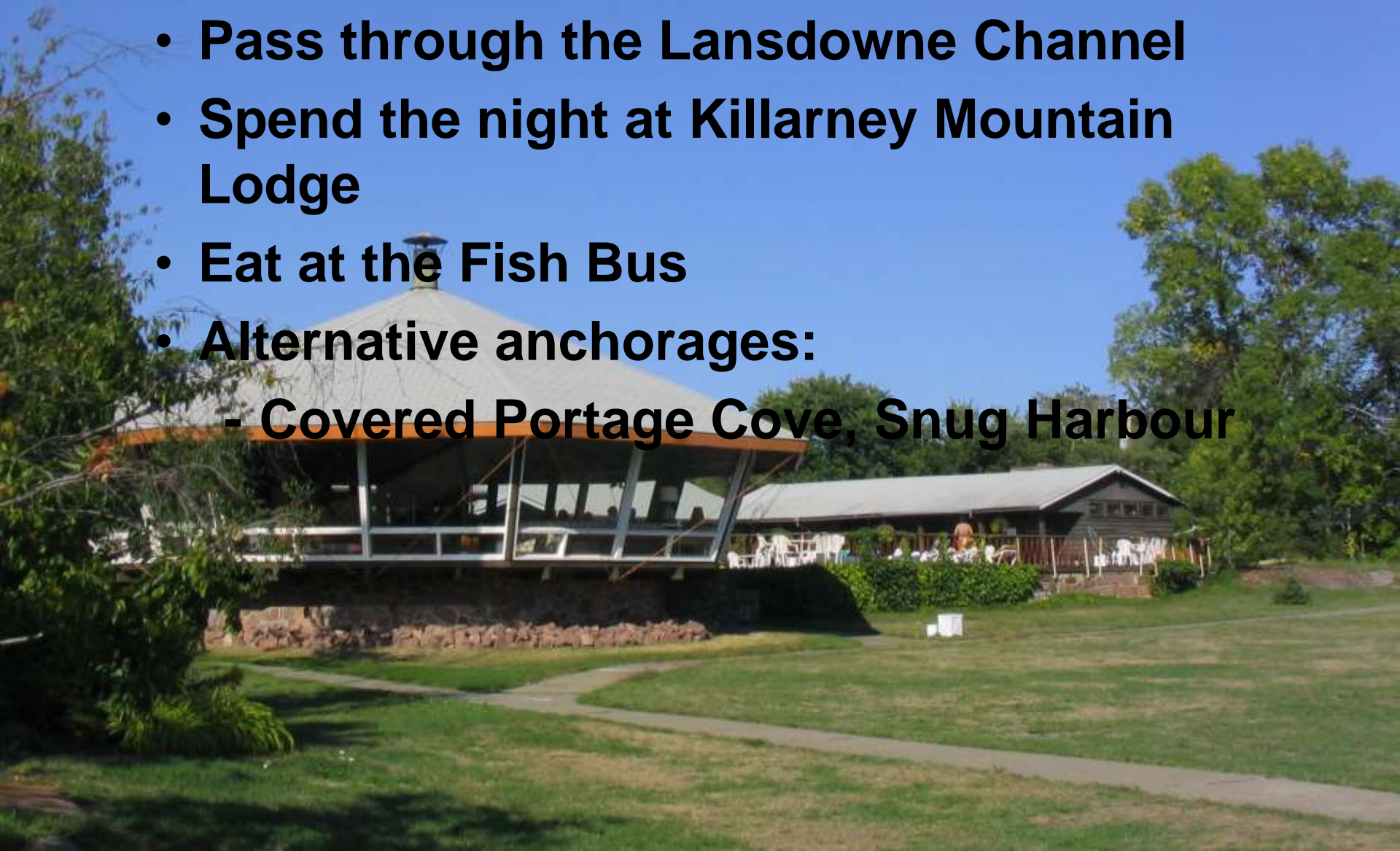


Day 8: Explore, or



Day 8: Killarney - 14 nm

- **Pass through the Lansdowne Channel**
- **Spend the night at Killarney Mountain Lodge**
- **Eat at the Fish Bus**
- **Alternative anchorages:**
 - **Covered Portage Cove, Snug Harbour**



Day 9: Return to Little Current -14 nm

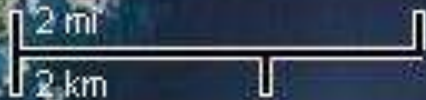
- Reprovision
- Stop for the night, or
- Continue on to
- East Rous - 4 nm



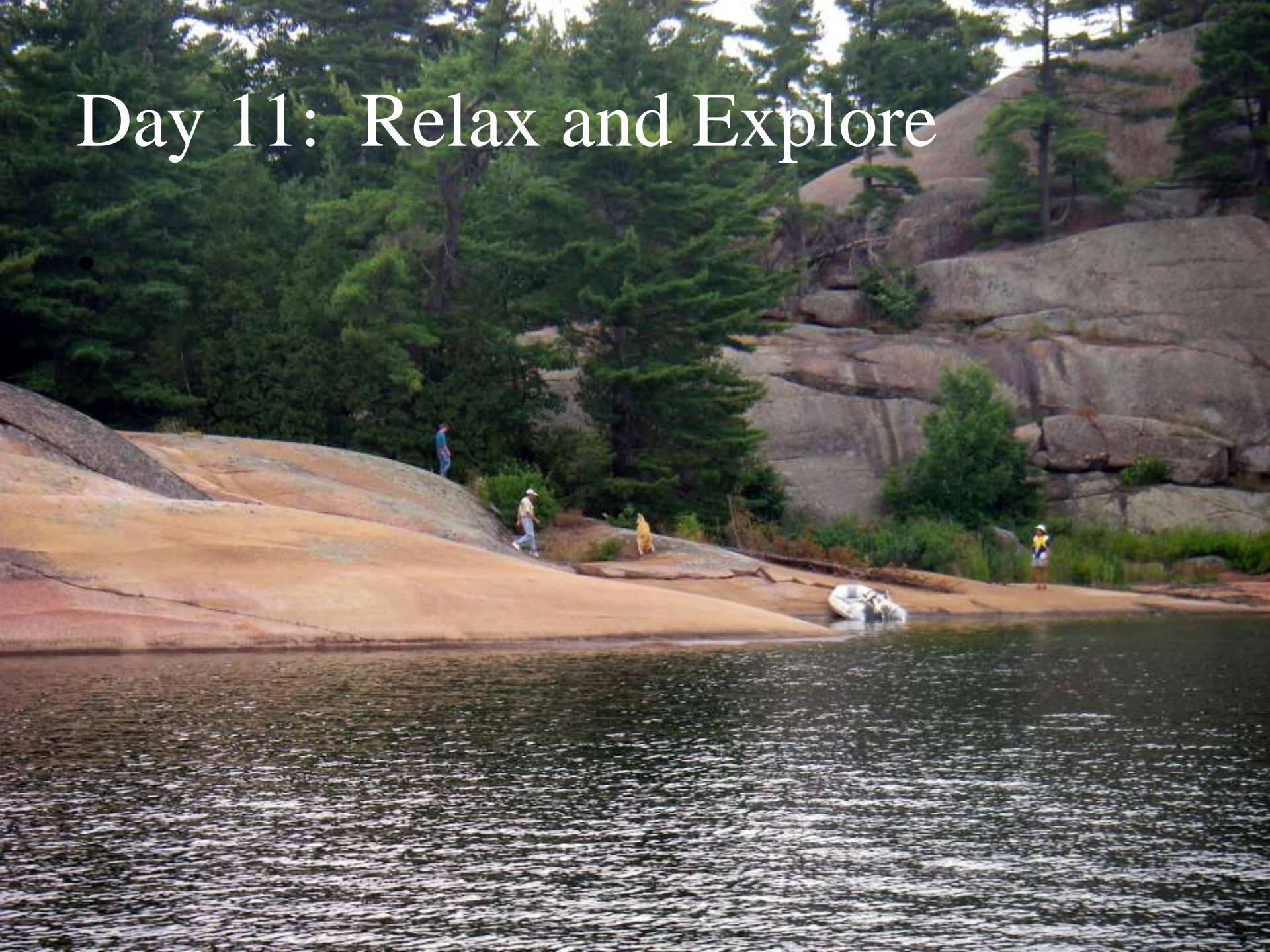
JDay 10: The Benjamins - 20 nm

Multiple anchorages

- South Benjamin
- Oak Bay
- Bay of the Benjamins
- Eagle Island
- Fox Harbour



Day 11: Relax and Explore



Day 12: Gore Bay - 13 nm

Reprovision



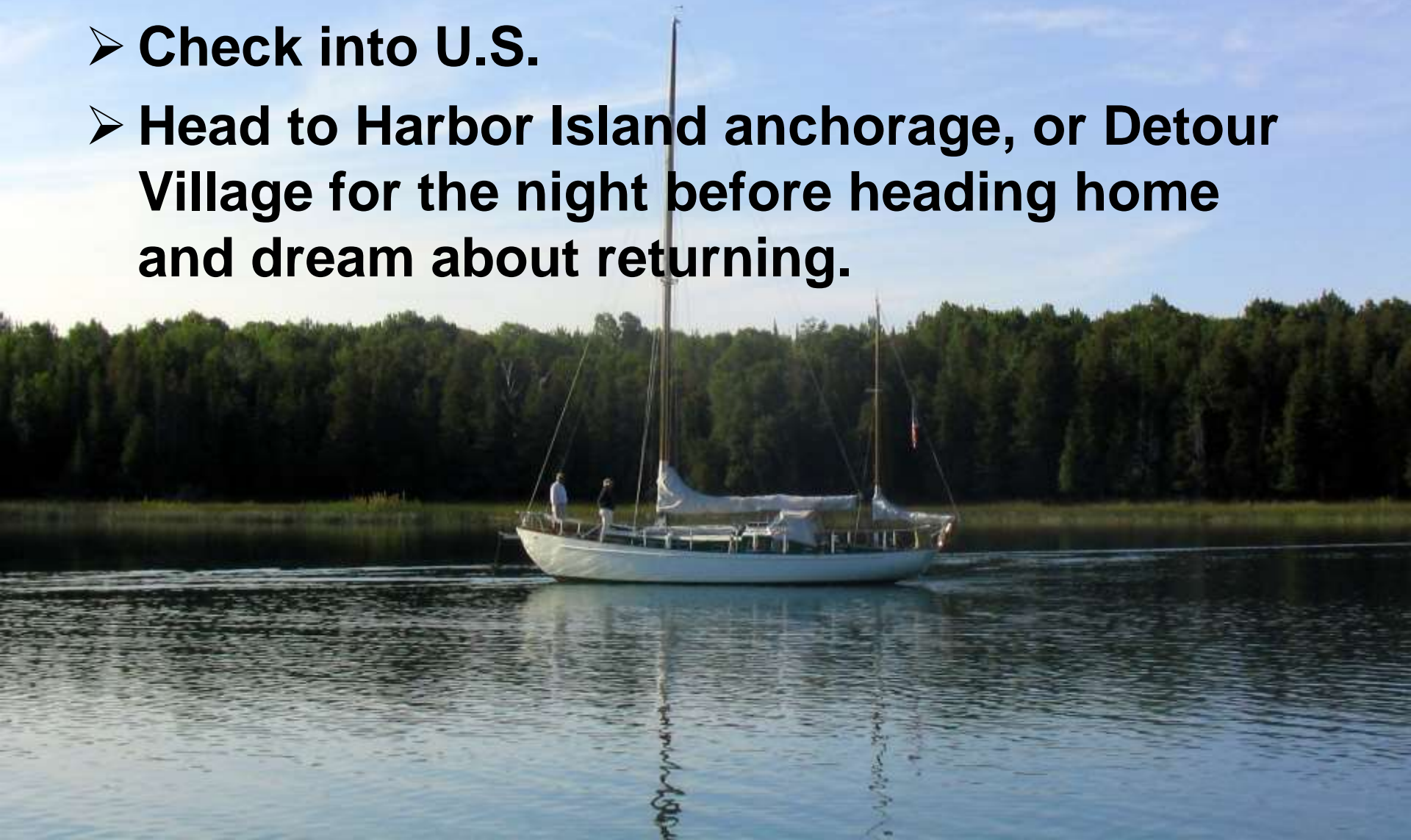
Day 13: Start heading west

- **Meldrum Bay - 32 nm, or**
- **Stop in Bayfield Sound - 18 nm, multiple anchorages**



Day 14: Drummond Island - 37 nm

- **Check into U.S.**
- **Head to Harbor Island anchorage, or Detour Village for the night before heading home and dream about returning.**



See you up there

