

SYMBOLS:

(ALL SYMBOLS MAY OR MAY NOT BE USED)

LIGHTING:

	2x4 RECESSED FLUORESCENT FIXTURE WITH 18 CELL PARABOLIC DIFFUSER. SEE FIXTURE SCHEDULE. (IN A T-BAR CEILING U.O.N.)
	2x4 RECESSED FLUORESCENT FIXTURE WITH 18 CELL PARABOLIC DIFFUSER AND BATTERY BACK UP. SEE FIXTURE SCHEDULE. (IN A T-BAR CEILING U.O.N.)
	2x4 RECESSED FLUORESCENT OR LED FIXTURE WITH DIRECT/INDIRECT DIFFUSER. SEE FIXTURE SCHEDULE. (IN A T-BAR CEILING U.O.N.)
	2x4 RECESSED FLUORESCENT OR LED FIXTURE WITH DIRECT/INDIRECT DIFFUSER AND BATTERY BACK UP. SEE FIXTURE SCHEDULE. (IN A T-BAR CEILING U.O.N.)
	2x4 RECESSED FLUORESCENT OR LED FIXTURE WITH ACRYLIC PRISMATIC DIFFUSER. SEE FIXTURE SCHEDULE. (IN A T-BAR CEILING U.O.N.)
	2x4 RECESSED FLUORESCENT OR LED FIXTURE WITH ACRYLIC PRISMATIC DIFFUSER AND BATTERY BACK UP. SEE FIXTURE SCHEDULE. (IN A T-BAR CEILING U.O.N.)
	2x4 RECESSED FLUORESCENT OR LED FIXTURE WITH SWITCH TAP FOR A SOFTWIRE CONNECTION. (IN A T-BAR CEILING)
	2x2 RECESSED FLUORESCENT FIXTURE WITH 18 CELL PARABOLIC DIFFUSER. SEE FIXTURE SCHEDULE. (IN A T-BAR CEILING U.O.N.)
	2x2 RECESSED FLUORESCENT OR LED FIXTURE WITH DIRECT/INDIRECT DIFFUSER. SEE FIXTURE SCHEDULE. (IN A T-BAR CEILING U.O.N.)
	2x2 RECESSED FLUORESCENT OR LED FIXTURE WITH DIRECT/INDIRECT DIFFUSER AND BATTERY BACK UP. SEE FIXTURE SCHEDULE. (IN A T-BAR CEILING U.O.N.)
	2x2 RECESSED FLUORESCENT OR LED FIXTURE WITH ACRYLIC PRISMATIC DIFFUSER. SEE FIXTURE SCHEDULE. (IN A T-BAR CEILING U.O.N.)
	2x2 RECESSED FLUORESCENT OR LED FIXTURE WITH ACRYLIC PRISMATIC DIFFUSER AND BATTERY BACK UP. SEE FIXTURE SCHEDULE. (IN A T-BAR CEILING U.O.N.)
	2x2 RECESSED FLUORESCENT OR LED FIXTURE WITH SWITCH TAP FOR A SOFTWIRE CONNECTION. (IN A T-BAR CEILING)
	2x2 RECESSED FLUORESCENT OR LED FIXTURE ON SOFTWIRE SYSTEM WITH EMERGENCY CIRCUITING. (IN A T-BAR CEILING)
	1x4 RECESSED FLUORESCENT OR LED FIXTURE WITH DIRECT/INDIRECT DIFFUSER. SEE FIXTURE SCHEDULE. (IN A T-BAR CEILING U.O.N.)
	1x4 RECESSED FLUORESCENT OR LED FIXTURE WITH DIRECT/INDIRECT DIFFUSER AND BATTERY BACK UP. SEE FIXTURE SCHEDULE. (IN A T-BAR CEILING U.O.N.)
	1x4 RECESSED FLUORESCENT FIXTURE WITH 18 CELL PARABOLIC DIFFUSER. SEE FIXTURE SCHEDULE. (IN A T-BAR CEILING U.O.N.)
	1x4 RECESSED FLUORESCENT OR LED FIXTURE WITH ACRYLIC PRISMATIC DIFFUSER. SEE FIXTURE SCHEDULE. (IN A T-BAR CEILING U.O.N.)
	1x4 RECESSED FLUORESCENT OR LED FIXTURE WITH ACRYLIC PRISMATIC DIFFUSER AND BATTERY BACK UP. SEE FIXTURE SCHEDULE. (IN A T-BAR CEILING U.O.N.)
	1x4 RECESSED FLUORESCENT OR LED FIXTURE WITH ACRYLIC PRISMATIC DIFFUSER. SEE FIXTURE SCHEDULE. (IN A T-BAR CEILING U.O.N.)
	1x8 RECESSED FLUORESCENT OR LED FIXTURE WITH ACRYLIC PRISMATIC DIFFUSER. SEE FIXTURE SCHEDULE. (IN A T-BAR CEILING U.O.N.)
	1x8 RECESSED FLUORESCENT OR LED FIXTURE WITH ACRYLIC PRISMATIC DIFFUSER AND BATTERY BACK UP. SEE FIXTURE SCHEDULE. (IN A T-BAR CEILING U.O.N.)

POWER:

	SWITCHBOARD OR DISTRIBUTION BOARD
	MOTOR CONTROL CENTER
	FLUSH OR SURFACE MOUNTED BRANCH CIRCUIT PANEL
	SURFACE MOUNTED RELAY PANEL
	TRANSFORMER, SIZE AS INDICATED ON DRAWINGS
	COMBINATION STARTER DISCONNECT SWITCH DISCONNECT SWITCH
	DISCONNECT SWITCH, MOTOR RATED, "F" INDICATES SWITCH TO BE FURNISHED WITH FUSES, SIZE TO EQUIPMENT NAMEPLATE DATA.
	MAGNETIC MOTOR STARTER WITH CPT, HOA AND 3 O.L.s. "2" INDICATES NEMA SIZE.
	EMERGENCY POWER OFF (PANIC BUTTON)
	FAN CONNECTION - PROVIDE MOTOR RATED DISCONNECT AT UNIT, AND MOTOR, FURNISHED AND INSTALLED BY OTHERS. "W" DENOTES HORSEPOWER WHEN KNOWN.
	WALL MOUNTED JUNCTION BOX
	VARIABLE FREQUENCY DRIVE
	WIREMOLD 6-4000 DIVIDED. VERIFY MOUNTING HEIGHT AND NUMBER OF BRANCH CIRCUITS
	PLUGMOLD - VERIFY MOUNTING HEIGHT AND NUMBER OF BRANCH CIRCUITS
	TELEPHONE/POWER POLE

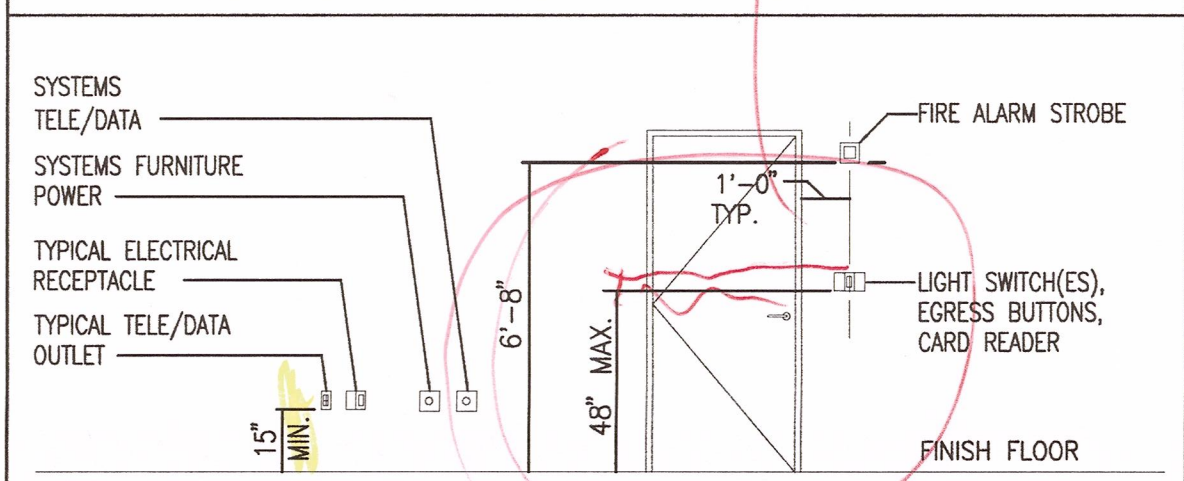
CONDUIT

	CONDUIT TURNING UP
	CONDUIT TURNING DOWN
	CONDUIT RUNNING UP & DOWN
	LOW VOLTAGE MULTI-CONDUCTOR CABLE - PLENUM RATED WHERE REQUIRED, NOT INSTALLED IN CONDUIT.
	CONDUIT OR MC CABLE RUN ON NIGHT LIGHT OR EMERGENCY CIRCUIT-- CONCEALED IN WALLS OR CEILING, WITH (2) #12 THHN/THWN CU & (1) #12 THHN/THWN CU GROUND U.O.N.
	CONDUIT OR MC CABLE - CONCEALED IN WALLS OR CEILING, WITH (2) #12 THHN/THWN CU & (1) #12 THHN/THWN CU GROUND U.O.N.
	CONDUIT - IN OR BELOW FLOOR, 3/4" WITH (2) #12 THHN/THWN CU & (1) #12 THHN/THWN CU GROUND U.O.N.
	CONDUIT - EXPOSED, 1/2" WITH (2) #12 THHN/THWN CU & (1) #12 THHN/THWN CU GROUND U.O.N.
	HASH MARK IDENTIFICATION:
	PHASE CONDUCTOR AND/OR SWITCH LEGS
	NEUTRAL CONDUCTOR
	EQUIPMENT GROUND CONDUCTOR
	ISOLATED GROUND CONDUCTOR (WHERE USED)
	CONDUIT - HOME RUN TO PANEL, TERMINAL CABINET, ETC., HASH MARKS INDICATE NUMBER OF WIRES. #10 INDICATES WIRE SIZE, SIZE CONDUIT PER CODE U.O.N.
	FLEX CONDUIT WITH CONNECTION.
	RELOCATE EXISTING DEVICE AS SHOWN.

FIRE ALARM

	IONIZATION TYPE SMOKE DETECTOR - CEILING MOUNTED U.O.N. "R" INDICATES WITH RELAY BASE.
	DUCT MOUNTED SMOKE DETECTOR - FURNISHED AND INSTALLED BY MECHANICAL. WIRING TO FACP BY ELECTRICAL. WIRING TO FAN SHUTDOWN BY MECHANICAL U.O.N.
	POST INDICATOR VALVE SUPERVISORY SWITCH - FURNISHED AND INSTALLED BY OTHERS. WIRING TO FACP BY ELECTRICAL.
	FIRE SMOKE DAMPER

TYPICAL MOUNTING HEIGHTS



	LINEAR FLUORESCENT OR LED FIXTURE AIRCRAFT CABLE SUSPENDED. SEE FIXTURE SCHEDULE FOR TYPES AND LENGTHS.
	LINEAR FLUORESCENT OR LED FIXTURE AIRCRAFT CABLE SUSPENDED WITH BATTERY BACK UP. SEE FIXTURE SCHEDULE FOR TYPES AND LENGTHS.
	1x4 WALL MOUNTED FLUORESCENT OR LED FIXTURE. SEE ARCHITECTURAL DRAWINGS FOR MOUNTING HEIGHT.
	1x4 WALL MOUNTED FLUORESCENT OR LED FIXTURE ON A NIGHT LIGHT OR AN EMERGENCY CIRCUIT. SEE ARCHITECTURAL DRAWINGS FOR MOUNTING HEIGHT.
	1x8 WALL MOUNTED FLUORESCENT OR LED FIXTURE. SEE ARCHITECTURAL DRAWINGS FOR MOUNTING HEIGHT.
	1x8 WALL MOUNTED FLUORESCENT OR LED FIXTURE ON A NIGHT LIGHT OR AN EMERGENCY CIRCUIT. SEE ARCHITECTURAL DRAWINGS FOR MOUNTING HEIGHT.
	COMPACT FLUORESCENT, LED OR INCANDESCENT DOWN FIXTURE. SEE FIXTURE SCHEDULE FOR TYPE, DESCRIPTION AND LAMP TYPE.
	COMPACT FLUORESCENT, LED OR INCANDESCENT WALL WASH FIXTURE. SEE FIXTURE SCHEDULE FOR TYPE, DESCRIPTION AND LAMP TYPE.
	COMPACT FLUORESCENT, LED OR INCANDESCENT PENDANT MOUNTED FIXTURE. SEE FIXTURE SCHEDULE FOR TYPE, DESCRIPTION AND LAMP TYPE.
	COMPACT FLUORESCENT, LED OR INCANDESCENT WALL SCONCE FIXTURE. SEE ARCHITECTURAL FOR MOUNTING HEIGHT.
	COMPACT FLUORESCENT, LED OR INCANDESCENT WALL MOUNTED FIXTURE. SEE ARCHITECTURAL FOR MOUNTING HEIGHT.
	COMPACT FLUORESCENT, LED OR INCANDESCENT, LINE OR LOW VOLTAGE TRACK LIGHT. SEE FIXTURE SCHEDULE FOR DESCRIPTIONS AND LIGHTING PLANS FOR TRACK LENGTHS.
	COMPACT FLUORESCENT, LED OR INCANDESCENT KEYLESS FIXTURE. SEE FIXTURE SCHEDULE FOR DESCRIPTION.
	UNDER CABINET FLUORESCENT, LED OR INCANDESCENT FIXTURE. SEE FIXTURE SCHEDULE FOR DESCRIPTION.
	2x4 SURFACE OR RECESSED MOUNTED FLUORESCENT OR LED FIXTURE WITH ACRYLIC PRISMATIC DIFFUSER. (IN GYPSUM BOARD CEILING U.O.N.)
	2x4 SURFACE OR RECESSED MOUNTED FLUORESCENT OR LED FIXTURE WITH ACRYLIC PRISMATIC DIFFUSER AND BATTERY BACK UP. (IN GYPSUM BOARD CEILING U.O.N.)
	1x4 SURFACE OR RECESSED MOUNTED FLUORESCENT OR LED FIXTURE WITH ACRYLIC PRISMATIC DIFFUSER. (IN GYPSUM BOARD CEILING U.O.N.)
	1x4 SURFACE OR RECESSED MOUNTED FLUORESCENT OR LED FIXTURE WITH ACRYLIC PRISMATIC DIFFUSER AND BATTERY BACK UP. (IN GYPSUM BOARD CEILING U.O.N.)
	1x8 SURFACE OR RECESSED MOUNTED FLUORESCENT OR LED FIXTURE WITH ACRYLIC PRISMATIC DIFFUSER. (IN GYPSUM BOARD CEILING U.O.N.)
	1x8 SURFACE OR RECESSED MOUNTED FLUORESCENT OR LED FIXTURE WITH ACRYLIC PRISMATIC DIFFUSER AND BATTERY BACK UP. (IN GYPSUM BOARD CEILING U.O.N.)
	4 FOOT SURFACE MOUNTED OR CHAIN HUNG FLUORESCENT OR LED INDUSTRIAL STRIP LIGHT. SEE FIXTURE SCHEDULE FOR DESCRIPTION.
	4 FOOT SURFACE MOUNTED OR CHAIN HUNG FLUORESCENT OR LED INDUSTRIAL STRIP LIGHT. SEE FIXTURE SCHEDULE FOR DESCRIPTION.
	4 FOOT SURFACE MOUNTED OR CHAIN HUNG FLUORESCENT OR LED INDUSTRIAL STRIP LIGHT ON BATTERY BACK UP. SEE FIXTURE SCHEDULE FOR DESCRIPTION.
	8 FOOT SURFACE MOUNTED OR CHAIN HUNG FLUORESCENT OR LED INDUSTRIAL STRIP LIGHT. SEE FIXTURE SCHEDULE FOR DESCRIPTION.

	DUPLEX RECEPTACLE
	HALF SWITCHED DUPLEX RECEPTACLE
	DUPLEX RECEPTACLE ON A DEDICATED CIRCUIT
	DOUBLE DUPLEX RECEPTACLE
	HALF SWITCHED DOUBLE DUPLEX RECEPTACLE
	DOUBLE DUPLEX RECEPTACLE ON A DEDICATED CIRCUIT
	480V, 208V 20A RECEPTACLE, NEMA CONFIGURATION TO BE VERIFIED WITH OWNER, U.O.N.
	480V, 208V 30A RECEPTACLE, NEMA CONFIGURATION TO BE VERIFIED WITH OWNER, U.O.N.
	480V, 50A RECEPTACLE, NEMA CONFIGURATION TO BE VERIFIED WITH OWNER, U.O.N.
	480V, 60A RECEPTACLE, NEMA CONFIGURATION TO BE VERIFIED WITH OWNER, U.O.N.
	480V, 208V 100A RECEPTACLE, NEMA CONFIGURATION TO BE VERIFIED WITH OWNER, U.O.N.
	50 HERTZ RECEPTACLE OR CONNECTION
	SPECIAL EQUIPMENT RECEPTACLE OR CONNECTION, NEMA CONFIGURATION TO BE VERIFIED WITH OWNER, U.O.N.
	ISOLATED GROUND DUPLEX RECEPTACLE
	ISOLATED GROUND DOUBLE DUPLEX RECEPTACLE
	ELEVATOR PIT DUPLEX RECEPTACLE, LIGHT AND SWITCH

MISC.

	EQUIPMENT TAG
	SHEET NOTE SYMBOL
	GENERAL NOTE SYMBOL
	FIXTURE TAG, NUMBER INDICATED QUANTITY OF FIXTURES
	REVISION REFERENCE SYMBOL - SEE ASSOCIATED REVISION NOTE.
	SINGLE LINE
	MOLDED CASE CIRCUIT BREAKER, "100" EQUALS TRIP RATING, "3" INDICATES NUMBER OF POLES, "150" EQUALS FRAME SIZE.
	ENCLOSED MOLDED CASE CIRCUIT BREAKER, "100" EQUALS TRIP RATING, "3P" INDICATES NUMBER OF POLES.
	DRAW OUT INSULATED CASE OR AIR CIRCUIT BREAKER WITH INDICATIONS ABOVE.
	EQUIPMENT GROUND FAULT DETECTION WITH TEST/MONITOR PANEL.

LIGHT FIXTURE NOTES:

- MANUFACTURER AND DESCRIPTIONS NOTED ARE TO ESTABLISH MINIMUM STANDARDS FOR FIXTURES. EQUIVALENT WILL BE REVIEWED BASED ON APPEARANCE, CONSTRUCTION AND PHOTOMETRICS.
- ALL 18 FLUORESCENT LAMPS SHALL BE ANSI STANDARD RE735 EXCEPT AS NOTED, AND SHALL HAVE C.E.C. APPROVED ENERGY SAVING TYPE BALLASTS.
- ALL COMPACT FLUORESCENT LAMPS SHALL BE ANSI STANDARD RE835 COLOR TEMPERATURE.
- FLUORESCENT BALLASTS SHALL BE HIGH FREQUENCY ELECTRONIC, MINIMUM 88% BALLAST FACTOR, MAXIMUM 20% TOTAL HARMONIC DISTORTION, INTEGRATED CIRCUIT, ADVANCE MARK V OR EQUIVALENT BY MOTOROLA, MAGNETEK, OR ETC.
- FINISH MATERIALS AND COLOR OF ALL LIGHT FIXTURES SHALL BE VERIFIED WITH OWNER'S REP. AS PART OF SHOP DRAWINGS SUBMITTAL PRIOR TO ORDERING. PROVIDE SAMPLE COLOR CHIPS AND/OR SAMPLES AS REQUESTED.
- PRISMATIC DIFFUSER LENSES SHALL BE 100% VIRGIN ACRYLIC, MINIMUM 0.125" THICKNESS, PATTERN #12A UNLESS OTHERWISE NOTED.
- ALL PAINTED METAL PARTS OF FIXTURES SHALL BE POST PAINTED AFTER SHAPING WITH MINIMUM 50% REFLECTION PAINT. PRE-PAINTED MATERIAL NOT ACCEPTABLE.
- VERIFY EXACT MOUNTING HEIGHTS AND REFERENCE HEIGHTS (I.E., BOTTOM OF FIXTURE, CENTER LINE OF OUTLET BOX, ETC.) WITH OWNER'S REP PRIOR TO ROUGH-IN.
- SURFACE MOUNTED FIXTURES SHALL BE SECURED TO BUILDING STRUCTURE.
- ALL PENDANT MOUNTED FIXTURES SHALL BE INSTALLED WITH CANOPIES AND STEMS SUCH THAT THEY SWING A MINIMUM OF 45 DEGREES IN ALL DIRECTIONS WITHOUT HITTING ANY OBSTRUCTIONS. IF THERE ARE OBSTRUCTIONS WITHIN THE 45 DEGREE SWING AREA, PROVIDE SWAY BRACING TO RESTRICT ANY MOVEMENT.
- PROVIDE SEISMIC BRACING FOR ALL FIXTURES AS REQUIRED BY STATE OF CALIFORNIA BUILDING CODES AND LOCAL JURISDICTION.
- SURFACE MOUNTED FIXTURES SHALL CLEAR SPRINKLER HEADS BY 12" MINIMUM.
- FLUORESCENT, COMPACT FLUORESCENT, AND METAL HALIDE LAMPS SHALL BE FULL WATTAGE, 3500K COLOR TEMPERATURE, BY GENERAL ELECTRIC, SYLVANIA-OSRAM OR PHILIPS.

LIGHTING CONTROLS:

	EMERGENCY LIGHTING CONTROL UNIT. WATTSTOPPER ELCO-200 OR EQUAL.
	PLUG LOAD CONTROLLER. WATTSTOPPER LMPL-101 OR EQUAL.
	DIGITAL WALL SWITCH, LOW VOLTAGE PUSHBUTTON SWITCH FOR CONTROL OF CONTROL OF MULTIPLE LOADS. WATTSTOPPER LMSW-100 SERIES OR EQUAL.
	DIMMING DIGITAL WALL SWITCH, LOW VOLTAGE PUSHBUTTON SWITCH FOR CONTROL OF CONTROL OF MULTIPLE LOADS. WATTSTOPPER LMDW-101 SERIES OR EQUAL.
	CEILING MOUNTED PHOTO CONTROL CELL. WATTSTOPPER LMLS-400 OR EQUAL.
	360° DUAL TECH CEILING MOUNTED OCCUPANCY SENSOR. WATTSTOPPER LMDC-100 OR EQUAL.
	NETWORK BRIDGE. WATTSTOPPER LMBC-300 OR EQUAL.
	SINGLE RELAY DIGITAL ON-OFF 0-10V DIMMING ROOM CONTROLLER. WATTSTOPPER LMRC-212 OR EQUAL.
	TWO RELAY DIGITAL ON-OFF 0-10V DIMMING ROOM CONTROLLER. WATTSTOPPER LMRC-213 OR EQUAL.
	THREE RELAY DIGITAL ON-OFF 0-10V DIMMING ROOM CONTROLLER. WATTSTOPPER LMRC-213 OR EQUAL.

ABBREVIATIONS:

AFI ABOVE FINISHED FLOOR	GEN GENERATOR	PB PULL BOX
AL ALUMINUM CONDUCTOR OR BUS	GFI GROUND FAULT INTERRUPTER	PE PHOTO-ELECTRIC CELL
AM AMPERE	GRD GROUND	PNL PANEL
ANN ANNUNCIATING	HGT HEIGHT	PR PWR
ART ARTICLE	HP HORSEPOWER	QTY QUANTITY
AUTO AUTOMATIC	HPS HIGH PRESSURE SODIUM	R REMOVE OR RELOCATE
AUX AUXILIARY	HTR HEATER	REC RECEPTACLE
AWG AMERICAN WIRE GAGE	HW HOT WATER	REF REFERRER/REFERENCE
BD BOARD	IG ISOLATED GROUND	REQD REQUIRED
BBG BACKBOARD	INDC INCANDESCENT	RL RELOCATED
BKR BREAKER	JBX JUNCTION BOX	SCHED SCHEDULE
BTM BOTTOM	KV KILOVOLT	SECT SECTION
CAB CABINET	KVA KILOVOLT AMPERE	SM SIMILAR
CB CIRCUIT BREAKER	KW KILOWATT	SQ SQUARE
CCTV CLOSED CIRCUIT TELEVISION	LT LIGHT	SW SWITCH
CKT CIRCUIT	LTG LIGHTING	SWBD SWITCHBOARD
CO CONDUIT ONLY	MAX MAXIMUM	SYR SYR
CU COPPER CONDUCTOR OR BUS	MCB MAIN CIRCUIT BREAKER	SYST SYSTEM
	MCC MOTOR CONTROL CENTER	
	MCM MILLICIRCULAR MILS	TC TIME CLOCK
	MN MINIMUM	TEL TELEPHONE
	MISC MISCELLANEOUS	TEMP TEMPORARY
	MO MAIN LUG ONLY	TEMPERATURE
	MTD MOUNTED	TRANS TRANSFORMER
	MTS MOUNTING	TTB TELEPHONE TERMINAL
	MTR MOTOR	TV TELEVISION
	N NORTH	TV TYP TYPICAL
	NC NORMALLY CLOSED	UC UNDER CABINET
	NEC NATIONAL ELECTRIC CODE	UG UNDERGROUND
	NEUT NEUTRAL	UL UNDERWRITERS LABORATORY
	NO NOT IN CONTRACT	UN UNLESS OTHERWISE NOTED
	NTS NOT TO SCALE	V VOLT
	OL OVERLOAD	W WALL MOUNTED, WATT
		WI WITH
		W/O WITH OUT
		WP WEATHERPROOF

CONSTRUCTION NOTES:

- ALL WIRE TO BE THIN/THIN COPPER, STRANDED EXCEPT WHERE NOTED OTHERWISE.
- ALL DEVICES AND EQUIPMENT INSTALLED OUTDOORS OR EXPOSED TO THE WEATHER SHALL BE OF WEATHERPROOF CONSTRUCTION.
- ALL DEVICES SHALL BE COMMERCIAL GRADE. ALL SINGLE AND GANGED PLATES SHALL BE THERMOPLASTIC AND SHALL MATCH THE DEVICE IN COLOR. COORDINATE DEVICE COLOR WITH THE ARCHITECT PRIOR TO INSTALLATION. GANG DEVICES AT GROUP LOCATIONS UNDER A SINGLE COVER PLATE.
- ALL FIXTURES INSTALLED IN SUSPENDED T-BAR CEILINGS SHALL BE SUPPORTED BY A MINIMUM OF TWO FIXTURE SUPPORT WIRES FURNISHED BY OTHERS.
- THE ELECTRICAL PLANS ARE SCHEMATIC IN NATURE AND ARE NOT INTENDED TO SHOW ALL OF THE ARCHITECTURAL DETAIL OR SPECIFICS OF ELECTRICAL CONSTRUCTION. TAKE ALL DIMENSIONS FROM THE ARCHITECTURAL DRAWINGS.
- REFER TO THE LATEST EDITION OF THE NEC, TITLE 24, USC AND LOCAL ORDINANCES IN EFFECT AT THE TIME OF CONSTRUCTION AS THE CONTROLLING DOCUMENTS.
- ALL CONNECTIONS TO MECHANICAL EQUIPMENT SHALL BE MADE WITH A MINIMUM OF 24" OF WEATHERPROOF FLEXIBLE CONDUIT TO PREVENT SOUND AND VIBRATION TRANSMISSION TO THE STRUCTURE.
- COORDINATE ALL MOTOR OVERLOADS AND/OR FUSES FURNISHED BY THIS CONTRACT WITH THE ACTUAL EQUIPMENT INSTALLED. SIZE OVERLOADS BASED ON MOTOR NAMEPLATE FULL LOAD CURRENT AND SERVICE FACTOR. FUSES FOR MOTOR AND TRANSFORMER CIRCUITS SHALL BE DUAL ELEMENT. FUSES FOR OTHER "NON-INDUST" LOADS SHALL BE FAST ACTING. ALL FUSES SHALL BE CURRENT LIMITING CLASS "Rxs" OR CLASS "L" UNLESS OTHERWISE NOTED.
- GROUNDING CONDUCTORS ARE GENERALLY NOT SHOWN. GROUND AND BOND ALL EQUIPMENT, RACEWAYS, MOTORS, PANELBOARDS AND SWITCHBOARDS, ETC. IN ACCORDANCE WITH NEC ARTICLE 250.
 - ALL INTERIOR METAL WATER PIPING SHALL BE BONDED TO ONE OR MORE GROUNDING ELECTRODES USED. THE BONDING JUMPING SHALL BE SIZED IN ACCORDANCE WITH TABLE 250-66.
 - INTERIOR METAL PIPING THAT MAY BECOME ENERGIZED (I.E. GAS PIPING, ETC.), SHALL BE BONDED TO ONE OR MORE GROUNDING ELECTRODES USED. THE BONDING JUMPER SHALL BE SIZED IN ACCORDANCE WITH TABLE 250-122, USING THE RATING OF THE CIRCUIT THAT MAY ENERGIZE THE PIPING.
- INSTALL ALL WALL MOUNTED POWER, TELEPHONE AND DATA OUTLETS AT +18" A.F.F., UNLESS OTHERWISE NOTED. INSTALL ALL LIGHTING CONTROL SWITCHES, FIRE ALARM PULLSTATIONS, FIREMAN'S TELEPHONE JACKS, AND WALL TELEPHONE JACKS AT +46" AFF, UNLESS OTHERWISE NOTED. ALL HEIGHT MEASUREMENTS SHALL BE TO THE CENTERLINE OF THE DEVICE.
- ISOLATED GROUNDING TYPE RECEPTABLES' TERMINALS SHALL BE GROUNDING BY AN INSULATED EQUIPMENT GROUNDING CONDUCTOR RUN WITH THE CIRCUIT CONDUCTORS. THIS GROUNDING CONDUCTOR SHALL BE PERMITTED TO PASS THROUGH ONE OR MORE PANELBOARDS WITHOUT CONNECTION TO THE PANELBOARD GROUNDING TERMINAL, SO AS TO TERMINATE WITHIN THE SAME BUILDING OR STRUCTURE. DIRECTLY AT AN EQUIPMENT GROUNDING CONDUCTOR TERMINAL OF THE APPLICABLE DERIVED SYSTEM OR SERVICE. NOTE: USE OF AN ISOLATED EQUIPMENT GROUNDING CONDUCTOR DOES NOT RELIEVE THE REQUIREMENT FOR GROUNDING THE RACEWAY SYSTEM AND OUTLET BOX.
 - WHERE MORE THAN ONE NOMINAL VOLTAGE SYSTEM EXISTS IN A BUILDING, EACH UNGROUNDED SYSTEM CONDUCTOR SHALL BE IDENTIFIED BY PHASE AND SYSTEM. THE MEANS OF IDENTIFICATION SHALL BE POSTED AT EACH BRANCH CIRCUIT PANELBOARD. THE PHASE COLOR CODING OF THE INSULATION OF THE CONDUCTORS SHALL BE:
 - BROWN-PURPLE-YELLOW FOR 480/277 VOLTS.
 - BLACK-RED-BLUE FOR 208/120 VOLTS.
- ALL EQUIPMENT SHALL BE LISTED AND LABELED BY A NATIONALLY RECOGNIZED TESTING LABORATORY FOR THE SPECIFIC APPLICATION IN WHICH USED. IT SHALL BE INSTALLED AS PER LISTING OR LABELING.

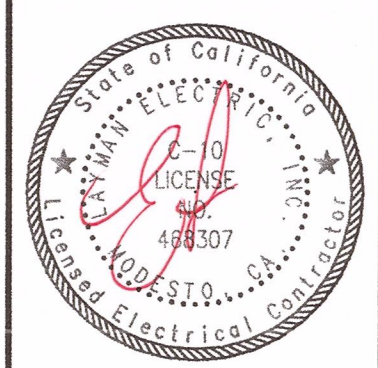
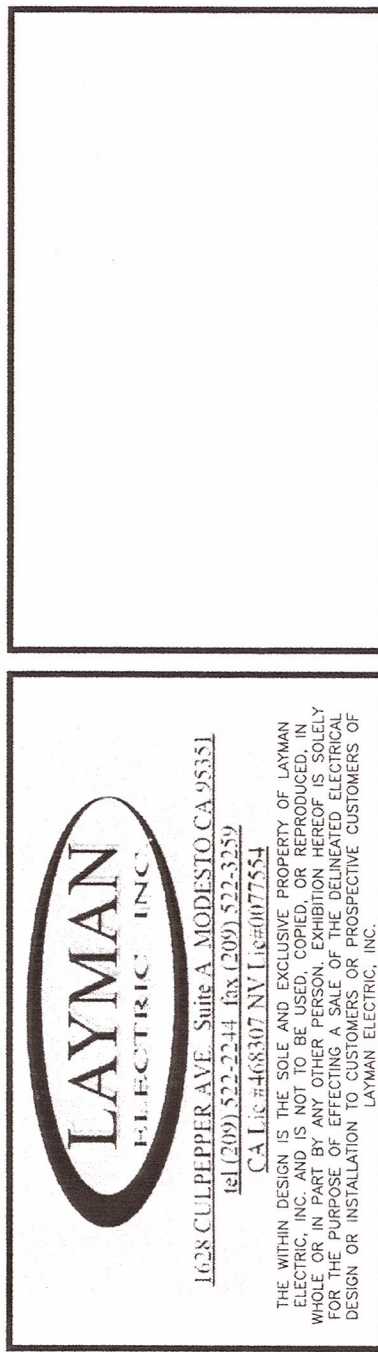
SCOPE OF WORK:

TENANT IMPROVEMENTS TO AN EXISTING BUILDING, INCLUDING BUT NOT LIMITED TO:

- INSTALLATION OF NEW LIGHTING FIXTURES AND SWITCHING AND AUTOMATIC CONTROLS TO COMPLY WITH TITLE 24 REQUIREMENTS AS INDICATED ON LIGHTING PLAN.
- INSTALLATION OF NEW RECEPTABLES, TEL/DATA DEVICES, CCTV CAMERA OUTLETS, ETC. AS INDICATED ON POWER PLAN.

FIXTURE SCHEDULE:

FIXTURE SCHEDULE						
TYPE	MANUFACTURER	DESCRIPTION	QTY	DESC.	WATTS	VOLTS
1.B.D.		8 INCH DIAMETER RECESSED DOWNLIGHT LED DOWN LIGHT WITH 0-10V DIMMING DRIVER	INC	LED	12	120
MATCH EXISTING		EXIT SIGN W/ WHITE HOUSING, GREEN STENCIL FACE, UNIVERSAL MOUNT, W/ DUAL HEAD EGRESS LIGHTING AND EMERGENCY BATTERY BACK UP	INC	LED	4	120
MATCH EXISTING		DUAL HEAD EGRESS LIGHTING AND EMERGENCY BATTERY	INC	LED	4	120



TENANT IMPROVEMENT FOR:
CENTRAL VALLEY AUTISM PROJECT
5501 ANTIQUE ROSE WAY
RIVERBANK, CA 95167

REVISIONS:

DRAWN: ECD

DATE: 01.25.16

SCALE: NONE

E-3:1 POWER PLAN

E-4:1 PANEL SCHEDULES

E-4:1 TITLE 24 DOCUMENTS

CHECKED: LEI

GENERAL INFORMATION

E-0