



How private landowners and Great River Greening can work together to restore wild rice in the Rum River watershed



Who is Great River Greening?

Great River Greening is a nonprofit conservation organization with a mission to lead and inspire the community-based restoration of Minnesota's prairies, forests and waters. We work throughout the state with landowners and local communities to restore natural resources in their backyards for the benefit of people and wildlife alike. We are working in collaboration with Minnesota DNR, County, and private landowners to bring back wild rice to the Rum River backwaters and oxbows, and public water bodies in the watershed.

What is Great River Greening doing for Wild Rice?

Great River Greening is working with landowning partners to assess, prep, collect and sow wild rice. Projects have included Rum River backwaters, wetlands, and shoreline. More ambitious plans are in the works for water bodies in Isanti Co. to be prepped and seeded in 2014. Greening also monitors the planting sites for success.

How does Great River Greening work with landowners?

Private landowners with shoreline on public water bodies, especially the Rum River, can contact us can express their interest....schedule a visit, assess the water body, discuss budget and cost share, and timefare.

What funding is currently available - and for what purposes?

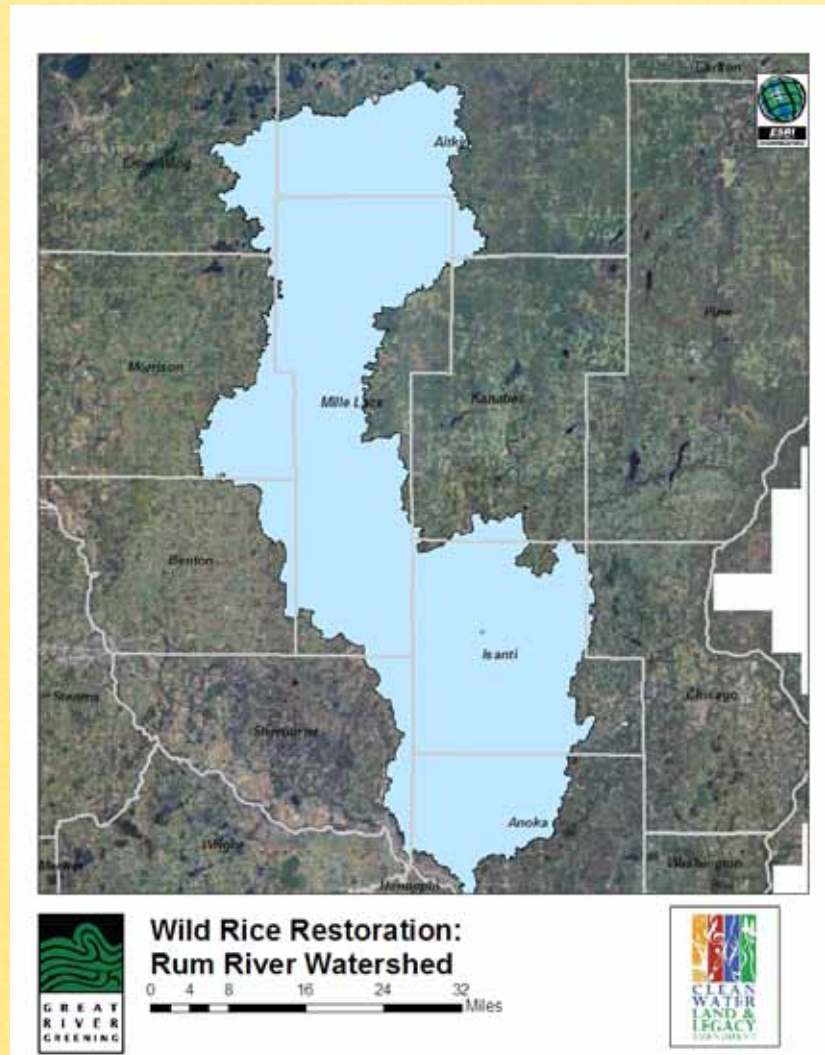
Greening currently has cost share funds available from the Outdoor Heritage Fund for assisting with wild rice restoration.



How private landowners and Great River Greening can work together to restore wild rice in the Rum River watershed

As a Landowner, what are my obligations if I undertake a project?

Typically, cost share is required in the form of matching funds or in kind contributions. Greening will pull the necessary permits, but landowners are key in reaching out to adjacent landowners to inform them of the project and in some cases seek adjacent landowner approval. Monitoring reports on the project for the next 10 years, including photos are generally required of the landowner.



OK, I am intrigued. What next?

If you are interested in discussing options on your property, or if you simply have questions, please contact:

Wayne Ostlie
Great River Greening
35 W Water Street, Suite 201
St. Paul, MN 55107
wostlie@greatrivergreening.org
651-665-9500 x19