



Welcome to the GIS scavenger hunt presented by Citizen Science GIS!

Today's objective: to learn more about the world around us using virtual tools and other materials.

Part one: *What is geography?*

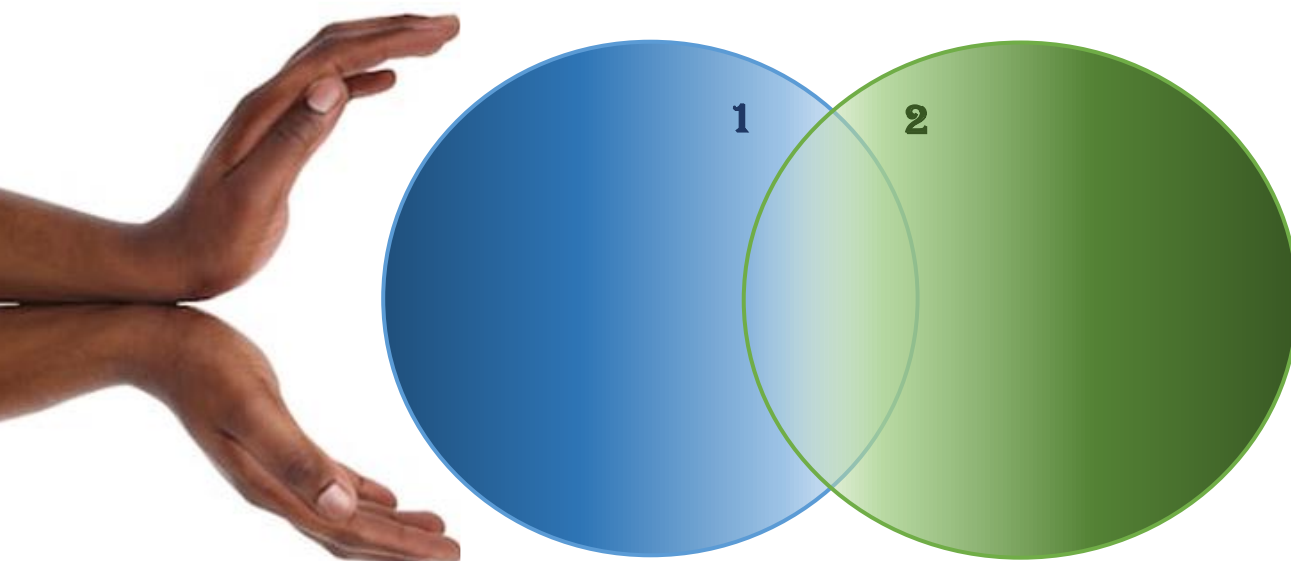
Click this [link](#) to learn more about the who, what, where, when and why of



1. How would you define **geography**?

2. What are two types of geography highlighted on the National Geographic page?

3. What are the similarities and differences between these two types?



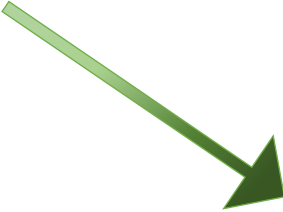
Part two: Mapping in your home town!



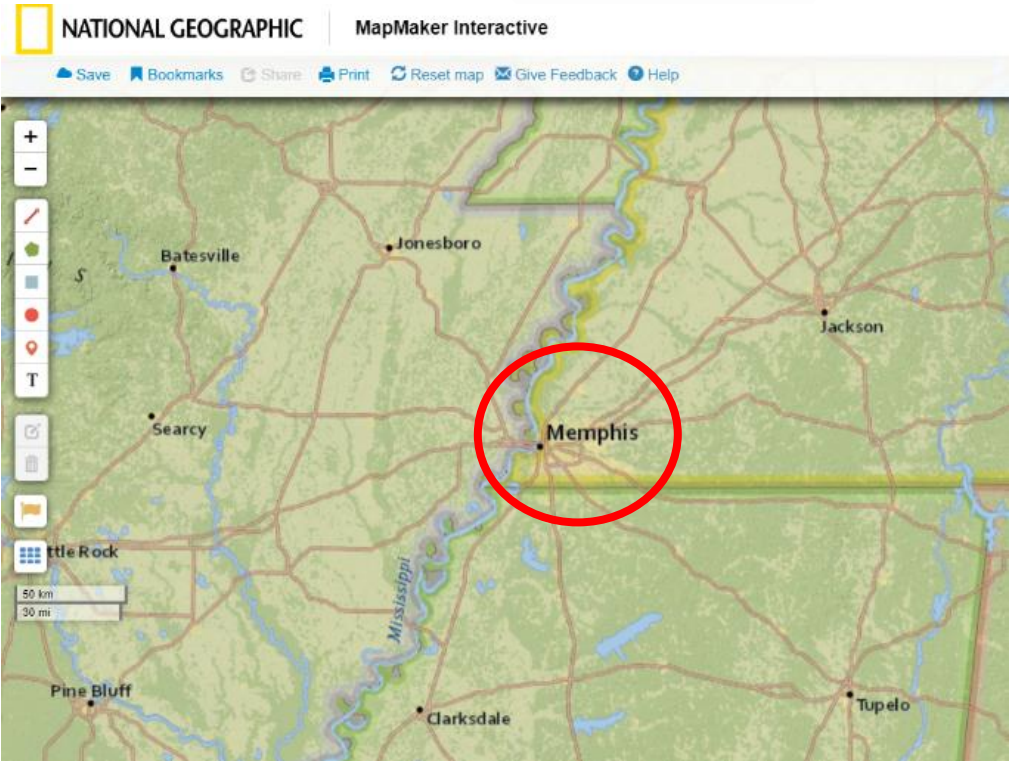
Next, navigate in your web browser to <http://mapmaker.nationalgeographic.org/>

Step 1: Find your home town.

What is the latitude and longitude?



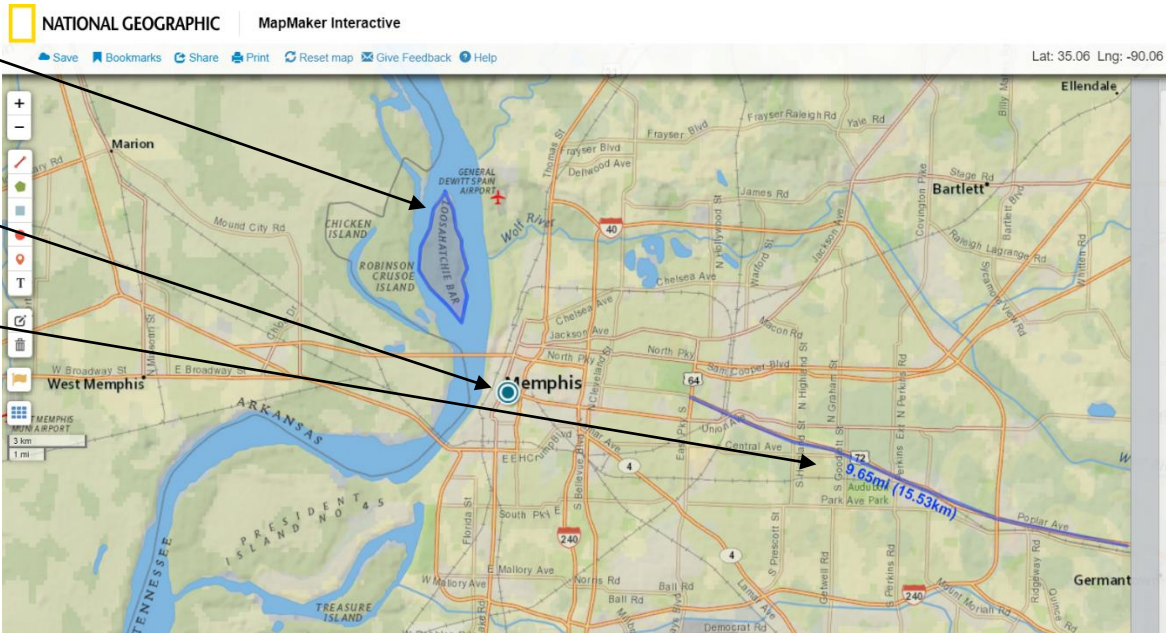
What is the city and state?



Step 2: Add three map elements to your basemap!



- One polygon.
- One point.
- One line.



Place a screenshot of your completed map here:

***To take a screenshot, use the Ctrl+PrtScr buttons on your keyboard and place the screenshot in the box provided below.**

