

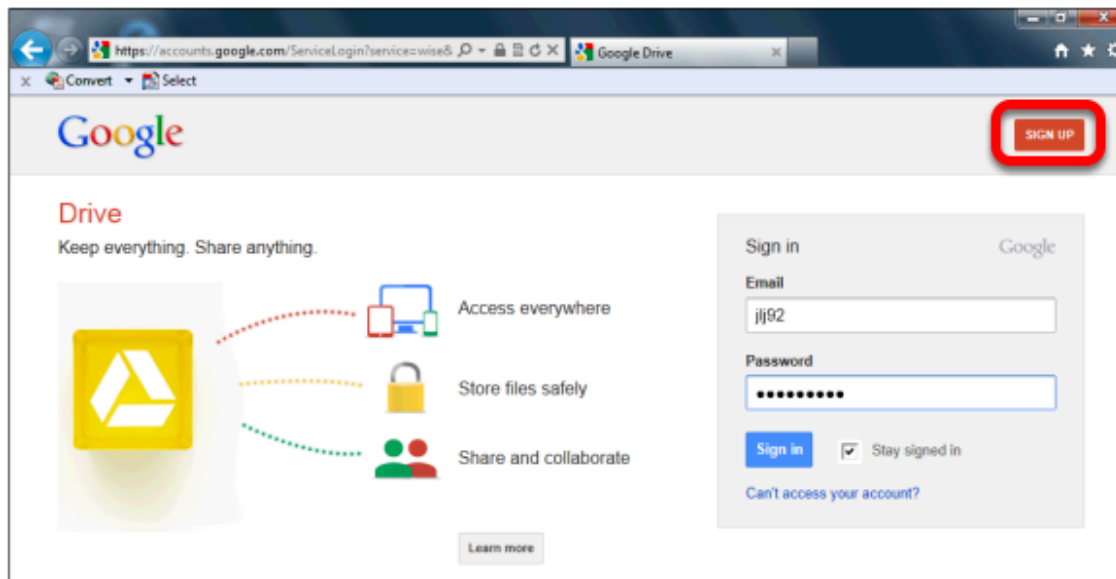
Download Google Drive to windows 7

Google Drive allows you to store and synchronize your files on the web, hard drive and mobile device. Prior to installing Google Drive, it is recommended that you organize the files in your Google Docs interface into folders and decide which folders to synchronize. The Google Drive installation will automatically synchronize individual files that reside in the Google Docs interface, but folders can be deselected.

Google Drive installs a folder on your Mac or Windows PC desktop. Then you just drag-and-drop files into the new folder and the contents automatically sync to the cloud as well as any other computers with Drive installed. Following the Google Drive installation, your files will be available everywhere you need them. If you change a file on the web, your computer or your mobile device, it will update on each device that has Google Drive installed. You can share, collaborate or work alone as your schedule dictates. The first 5 GB of storage is free, after that you may purchase additional storage in increments of 25 GB.

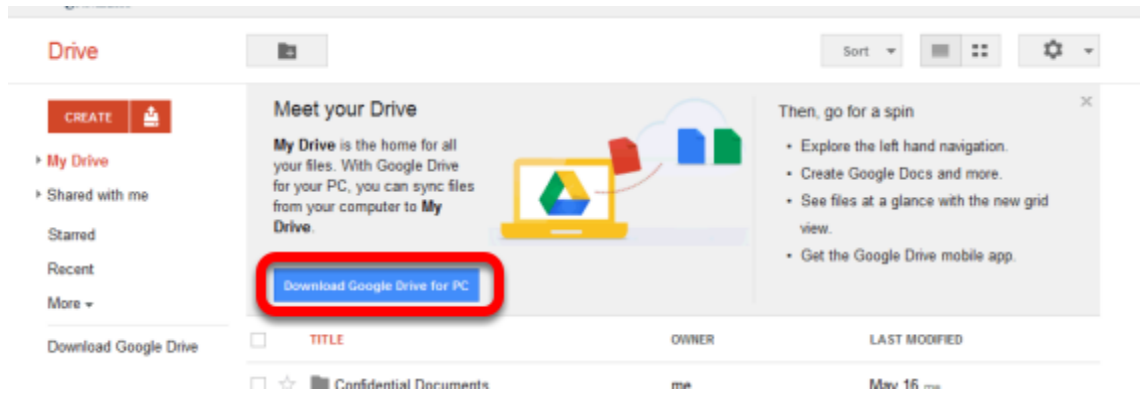
To get the most out of Google Drive, also [download](#) the Chrome browser and the [Google Drive app](#) for your mobile device.

Sign into Google Drive



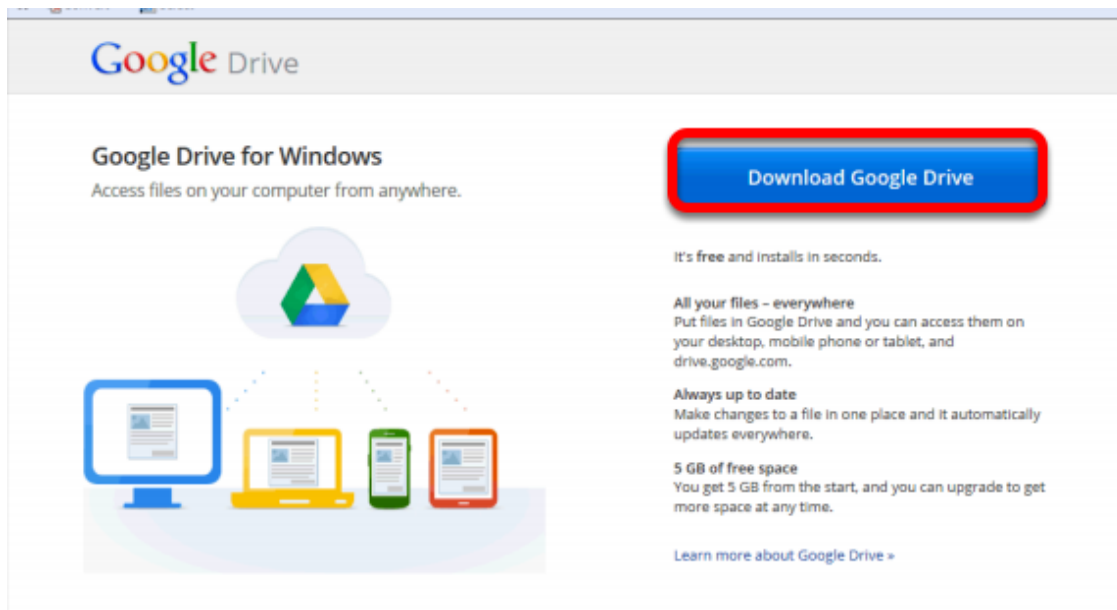
You need a Google account. If you don't have one, [sign up](#)

Download Google Drive



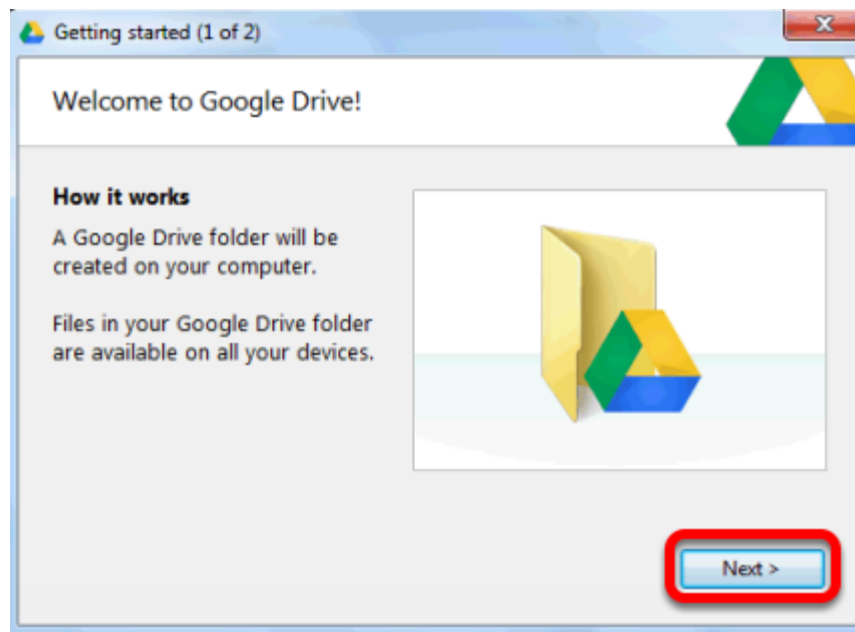
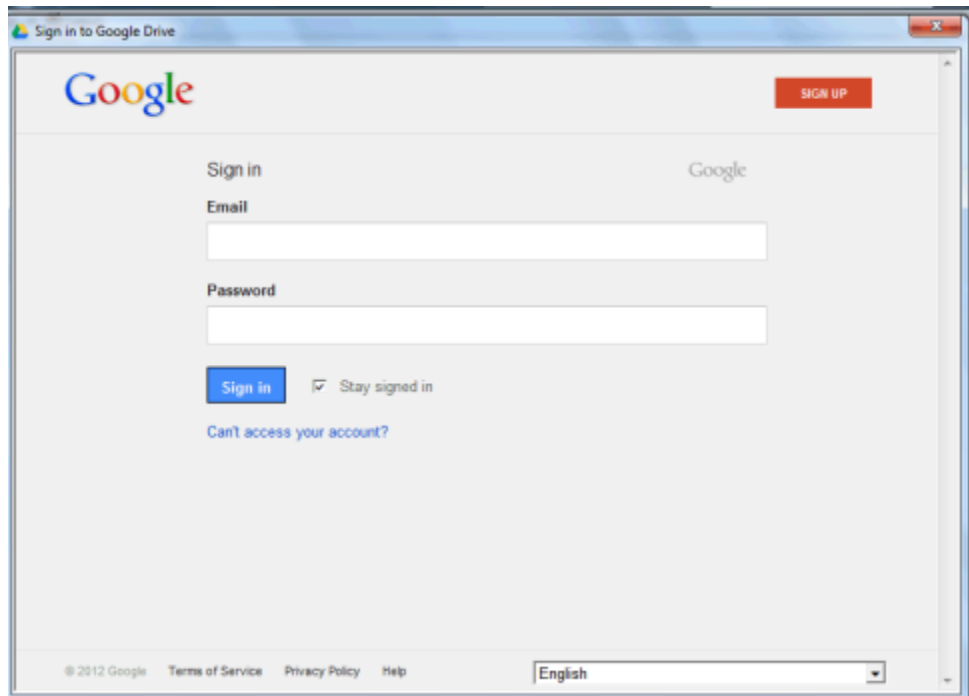
Your downloaded file will generally be in your Downloads folder.

Note: Don't forget to download the Google Drive app for your iPad, tablet or phone. Go to the App store on your iPad.

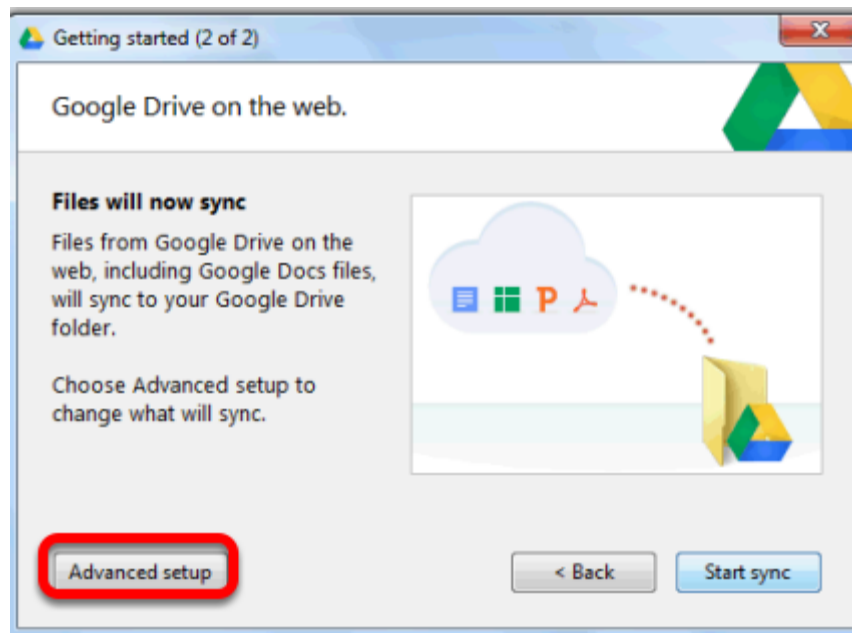


Click: **Download Google Drive**. Click the **Accept and Install** button when it appears.

Sign into your Google Drive

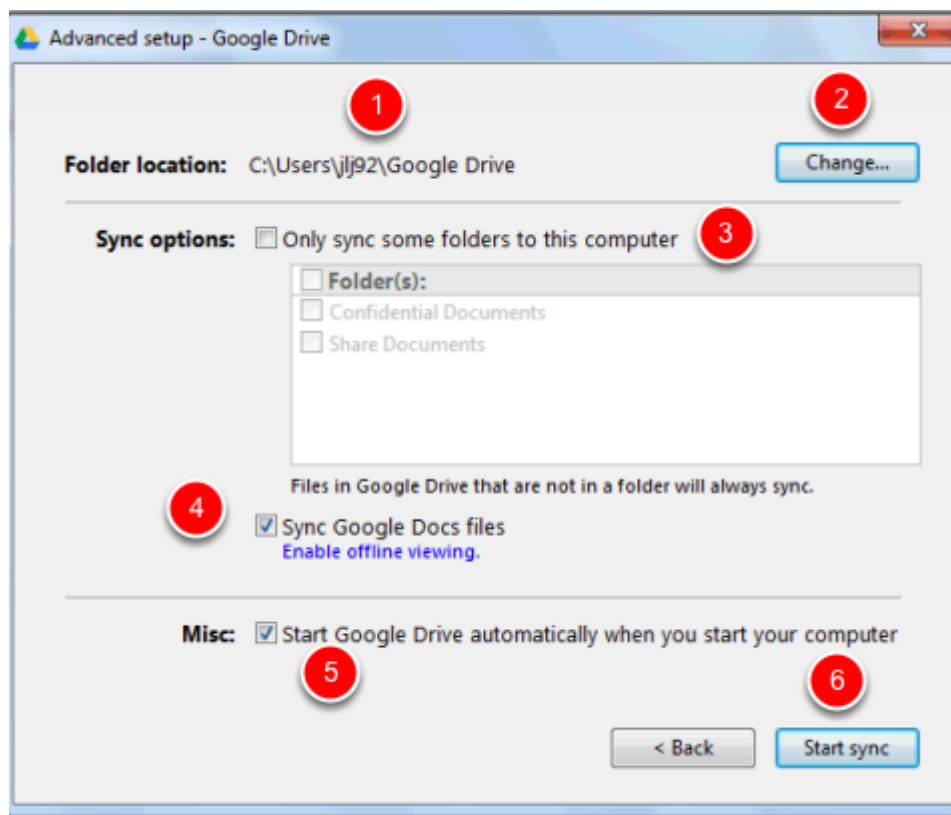


Click **Next**



Click the **Advanced Setup** button to choose which folders you wish to synchronise

Which folders on Google Drive do you want to synchronise?



You can have folders in your Google drive and sync that folder to your computer's hard drive. Any files in your Google Drive that is not in a folder will always sync.

1. This is the location where you will find your Google Drive on your C drive. If you want to put it in

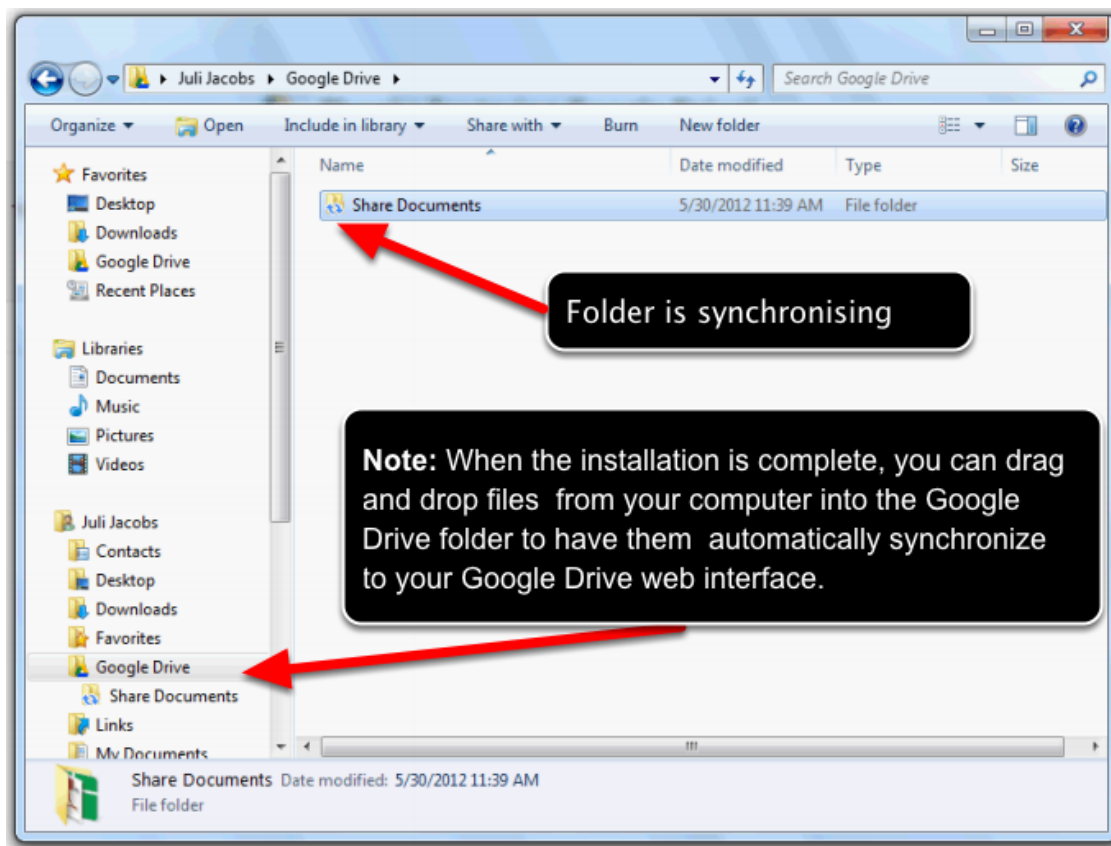
another location, click **2: Change**. You can either browse to an existing folder and select it or **Make New Folder**. Click the **OK** button when finished.

3. Unless you want to synchronize every folder stored in Google Docs, click the **Only sync some folders to this computer** option. Click next to each folder you wish to synchronize to place a check mark in the associated check box.

4. The **Sync Google Docs files** option is selected by default and will enable you to view documents in Google Drive without an internet connection. You can open these files in just one click via the Drive folder on your desktop. You can click the check box to disable this option.

5. The Start Google Drive automatically when you start your computer option is selected by default. You can click the check box to disable this option and start Google Drive manually.

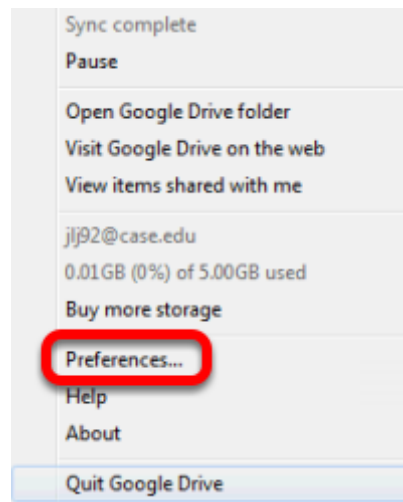
6. After selecting the desired options, click the Start sync button to begin the synchronization process.



Folder icons will appear with blue arrows while synchronization is in process.

Folder icons will appear with a green check mark when synchronization has finished.

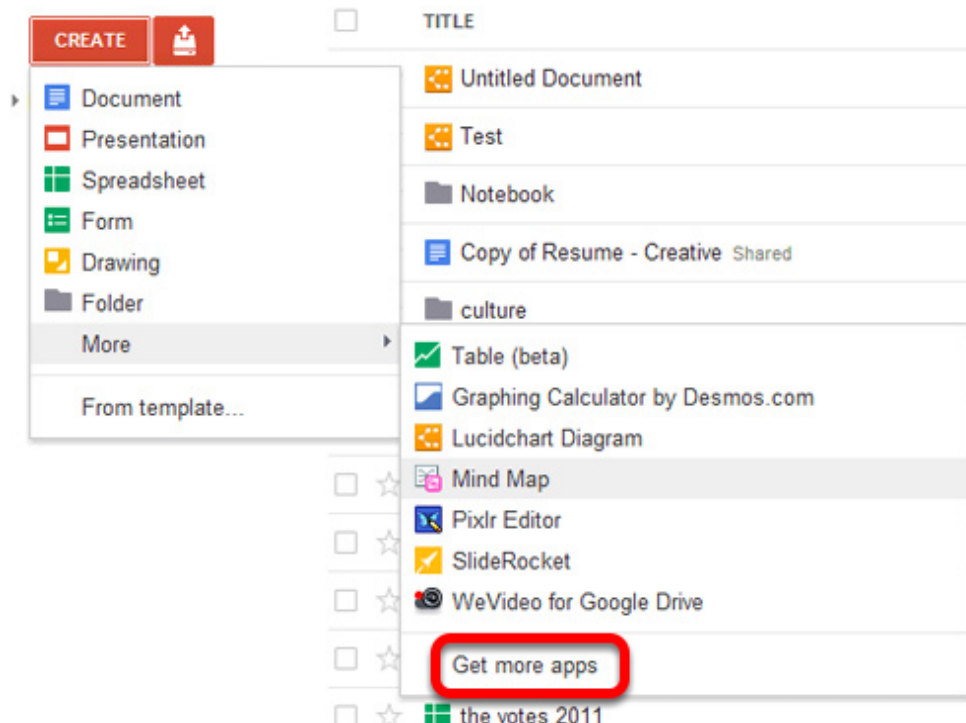
Managing your Google Drive



The installation also places a short cut to the Google Drive folder on your Windows desk top. Right click the icon to see a menu of available options.

Select the Preferences... menu option to change your Google Drive synchronization settings.

Create New files, different types



Google Drive now allows you not only to edit many different types of files, but also to create new ones right from the cloud. To create a new file, click on the red 'Create' button on the left menu and select the file types you want to create. Select 'More' if you want to create file other than Google

formatted document, and you will have more selection once you installed more extension for your Chrome.

Select: **Get More Apps** to connect more apps to your Google Drive.