



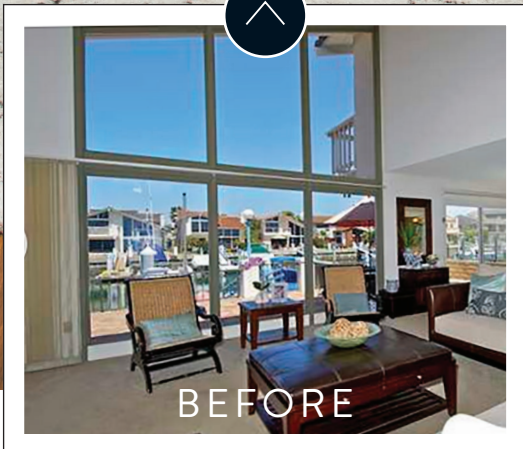
— *A SHORE* —  
**WINNER**

By JAN SOULTS WALKER  
Photos ED GOHLICH | Field Editor KAREN REINECKE

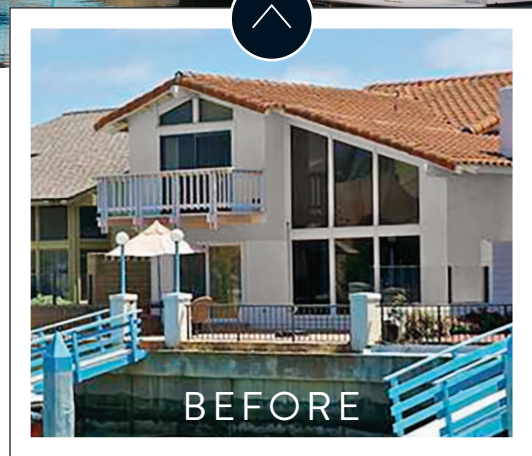
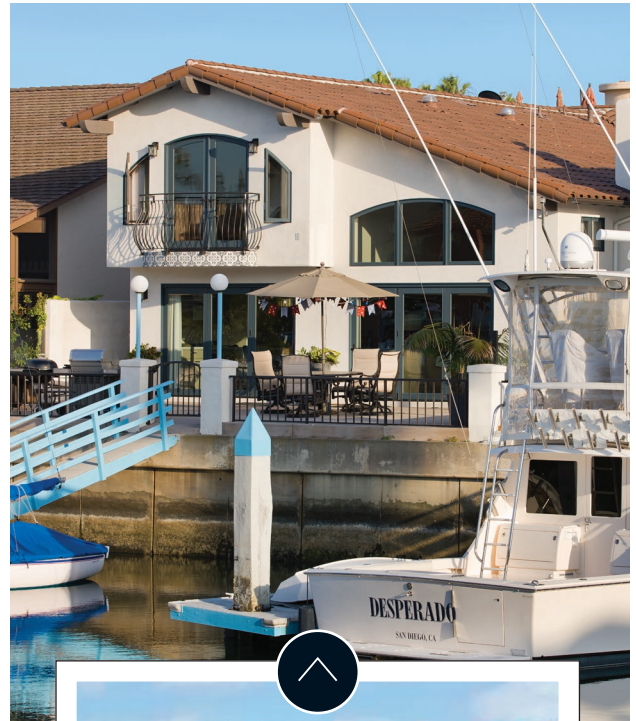
*Brightened, simplified interiors  
and an open floor plan make this  
waterside haven perfect for  
a couple or a crowd.*



**THIS PHOTO** Homeowner Larry Calhoun “had one big wish,” says designer Brittney Nielsen, “and that was a lounge chair for TV watching.” She answered the request in style with a lounger in plaid. A large sectional completes the space, providing plenty of seating for when the Calhoun sons are in town. **BEFORE** The living and dining rooms brimmed with 1970s architectural details.



BEFORE



A passion for boating and water sports inspired Larry and Debbie Calhoun to buy a home right on a Coronado, California, canal. But, as they told interior designer Brittney Nielsen, the house had issues: It felt stuck in the '70s with too many kitschy details, the kitchen was cut off from the living spaces, and there was a lack of sunlight on the water side.

“We just wanted the home to feel simple, clean, and light-filled,” Debbie says. As their three grown sons often visit, they also needed a space for gathering with family and friends. Floor plan adjustments opened the kitchen and brought the laundry in from the garage. Upstairs, extending the house over the garage and borrowing space from a bedroom made way for a spacious master suite with a canal view, dual closets, and a luxurious bath.

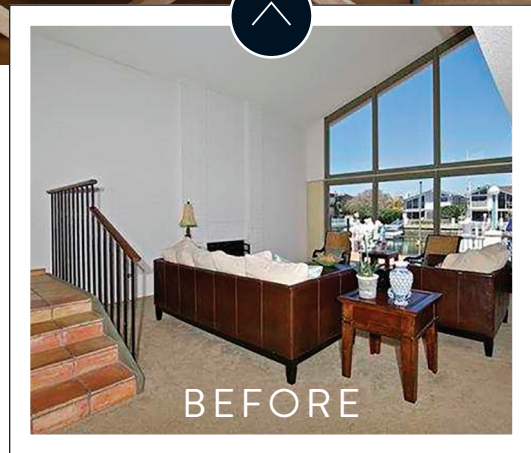
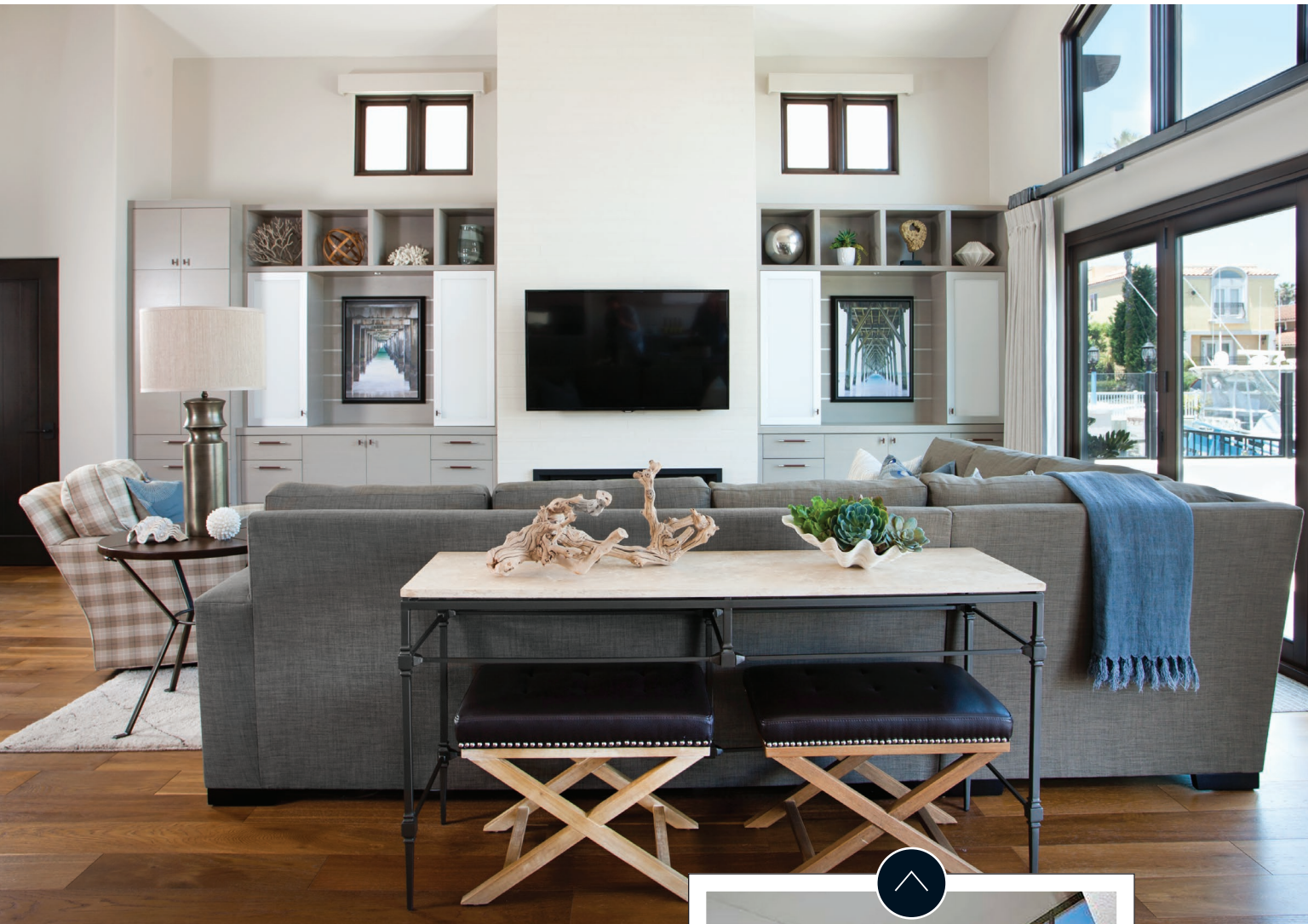
“Once the floor plan changes were in order, we needed to acknowledge the house’s Spanish style and its location,” Nielsen says. “But the Calhouns really appreciate simplicity, so they didn’t want an over-the-top nautical look.”

Nielsen updated the Spanish styling with less-fussy details and subtly arched windows. Adding a few extra windows and accordion-style patio doors welcomed in much-needed sunlight. Thoughtfully designed cabinetry around the fireplace and in the dining room keeps clutter out of sight. Dollops of blue in the kitchen and elsewhere team with rich browns introduced by leather and wood elements, instilling the home with warmth and a connection to the water.

“The house was originally going to be just our weekend getaway,” Debbie says. “We love it so much though, we sold our house in town and moved here full-time. It’s absolutely perfect for us.”

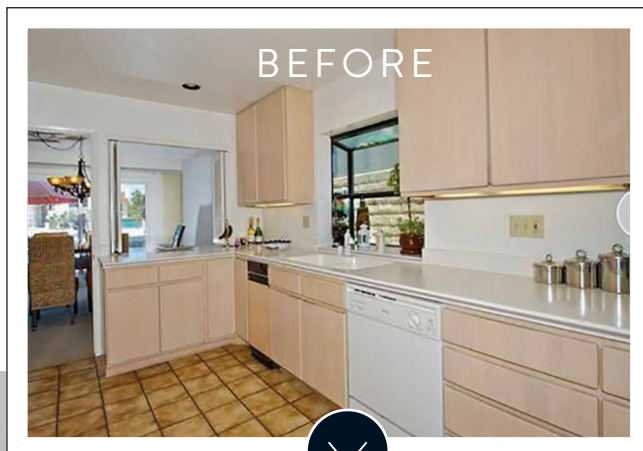
*Resources begin on page 92.*

**TOP LEFT** A trip to Barcelona inspired interior designer Brittney Nielsen to arch the home’s exterior openings and add blue-and-white Spanish tile embellishments. “I wanted to establish the fact that the home was on the water and hint to the color palette inside,” says Nielsen, who achieved both goals with the pretty tile detail. **TOP RIGHT** Subtly arched windows and an ironwork Juliet balcony provide the canal-side exterior with understated Spanish styling. **BEFORE** The north-facing rear of the Calhoun home had stark, contemporary angular windows overlooking the canal.



**TOP** A pair of X-leg ottomans can be pulled from under the living room's console table to provide additional seating when needed. **LEFT** Nielsen opted for a custom-made front door with Spanish-inspired ironwork on a glass panel that ushers in additional sunlight. Relocating the staircase made a step-free entryway possible. **BEFORE** The plain-Jane fireplace wall was a missed opportunity for a focal point and smart storage.

**BELOW** “With the kitchen open to the family room,” Nielsen says, “it really needed to be pretty.” A beautiful blue glass tile backsplash and mercury glass pendant fixtures add elegant nautical appeal. Nielsen added aluminum strips on the base of the island as a clever reference to boat decking. **BEFORE** Flooring and cabinetry dated the kitchen as much as its closed-to-the-public layout.



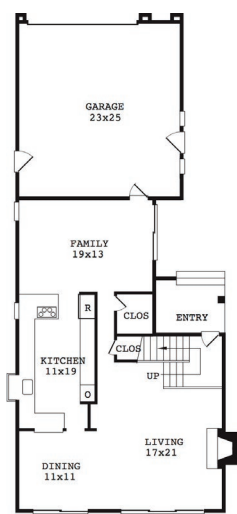
*A waterfall edge on the island's quartzite countertop is a look that's as clean and contemporary as it is dramatic.*



**LEFT** A capiz shell drum shade sparkles above the zinc-top table in the dining area. Built-in base cabinets act as a sideboard, harboring a small beverage refrigerator and offering a long countertop for serving meals. **BELOW** A leather-wrapped vanity gives the powder room a style boost. “Making a design statement in the powder room is one of my signature features,” Nielsen says. “I really want guests to use the space and come out and tell other guests, ‘Did you see that bathroom?!’”



## THE PLAN



**BEFORE**



**AFTER**

### FIRST FLOOR

Designer Brittney Nielsen addressed the Calhouns' major concerns by making subtle, smart changes to the main level layout: removing the walls that kept the kitchen closed off from the living and dining spaces, rerouting the stairwell to avoid a tiered entry, and creating a laundry room and guest bedroom from the now-unnecessary family room.

## DIVE IN WITH DETAILS

Take a closer look at how interior designer Brittney Nielsen added artful touches to give the Calhoun home a unique style.



### 1. MIXED-UP STOCK

Alternating stock mosaics creates a custom mix of color and shape on the master bathroom vanity backsplash.



### 2. SMALL TOUCH

Leather-wrapped pulls offer understated Spanish styling and a touch of personality.



### 3. HAND-CRAFTED

Leather flooring applied to risers and a hand-forged iron railing with a satin-black finish give presence and warmth to the staircase.



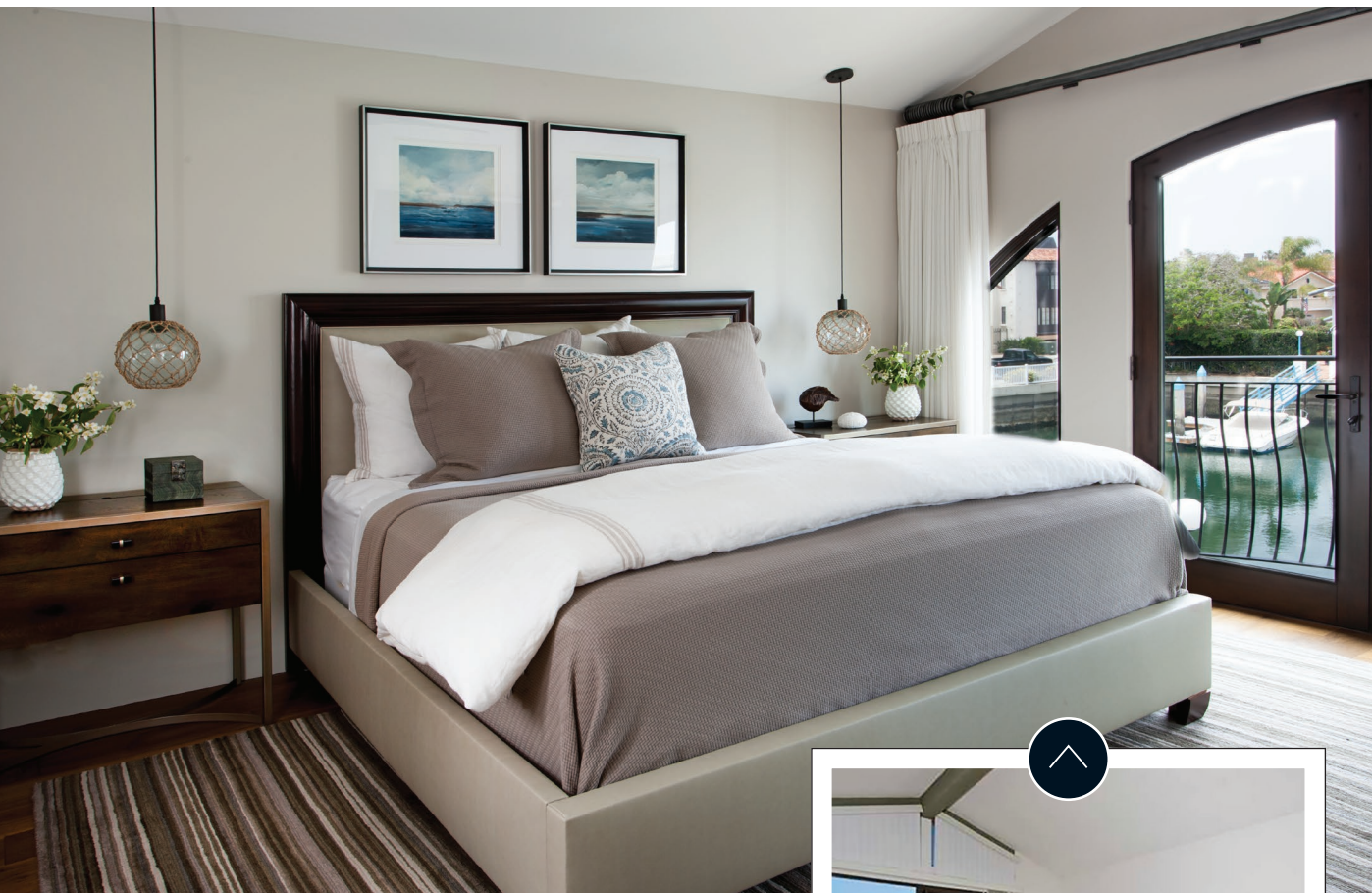
### 4. SUBTLY NAUTICAL

Aluminum strips mimic the look of a boat deck in the living room storage niches. The trick is repeated on the kitchen island.

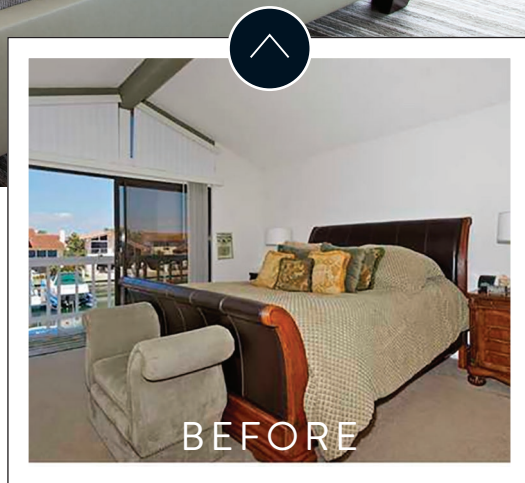


### 5. PRIVATE MOMENT

An unusual sink brings Nielsen's signature "wow" to the powder room.



**ABOVE** "The master bedroom needed to feel quiet and secluded," Nielsen says, so she chose muted tones to provide an air of tranquility. Pendant fixtures flank the bed and free up nightstands for belongings. **BEFORE** A dated set of sliding doors was replaced with arched French doors and flanking windows.

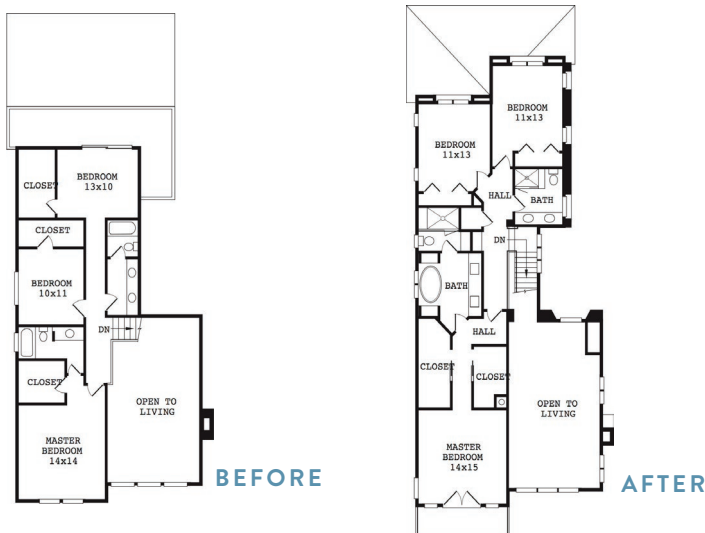




**LEFT** Above the sculptural freestanding tub, Nielsen says, “the arched ceiling creates a Spanish grotto feel.” **BELOW** A shiny chrome finish on the vanity’s drawer and cabinet pulls and faucets pairs with a white quartzite countertop “to bring a touch of glamour into the master bathroom,” Nielsen says. Medicine cabinets flank the vanity for double the storage.



## THE PLAN



### SECOND FLOOR

Upstairs, Nielsen reconfigured the master suite, adding copious storage with dual closets and eschewing a tiny bath in favor of a master bathroom built for two (and a showstopping tub). The rerouting of the stairs encouraged the extending of the floor plan over the home’s garage, where two guest rooms now reside.