

# Streamline your Sign & Display workflow



## *i*-cut Suite

*Eliminate errors, save time and reduce waste with the i-cut Suite.*

*i-cut Suite is a collection of pre-production software targeted specifically at users of large format digital printers or digital finishing systems.*

*The different modules of i-cut Suite provide such companies with optimal efficiency and productivity, regardless of the type, source and variety of the incoming job information.*



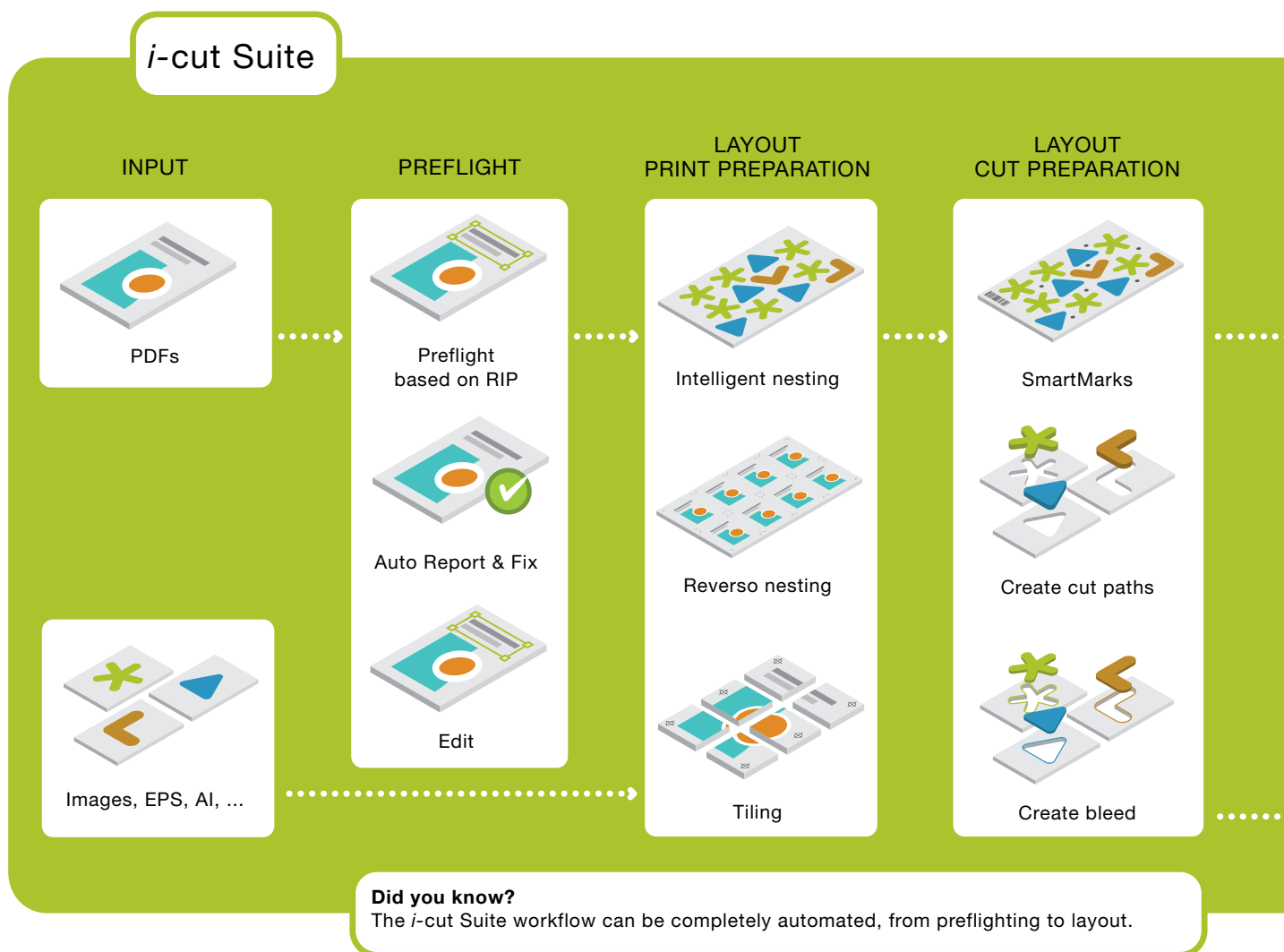
# Streamline your large format printing or Sign

“Eliminate errors, save time and reduce waste with *i-cut Suite*.”

*i-cut Suite* consists of

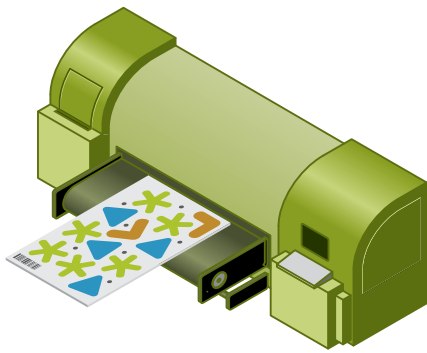


- *i-cut Preflight*: simple PDF preflighting and editing.
- *i-cut Layout*: for optimized sheet layout.
- *i-cut Vision Pro*: for perfect registration.
- *i-cut Automate*: automates the entire prepress production process.



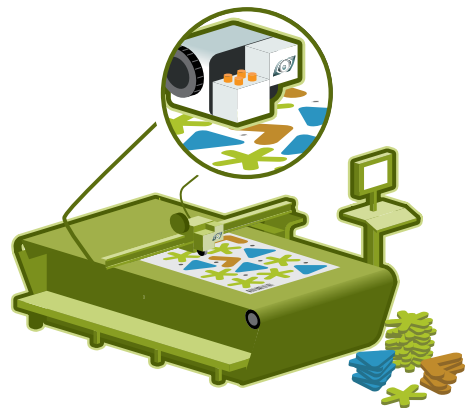
# & Display workflow

## PRINTING



Large Format Printer

## FINISHING



Perfect Digital Finishing - *i-cut* Vision

Cutting information

### Did you know?

You can generate customized shipping boxes directly from *i-cut* Layout.



# Preflighting and editing: *i*-cut Preflight

“Tired of finding out that a file is bad when it's too late? Tired of going back to different native applications to do a quick change?”

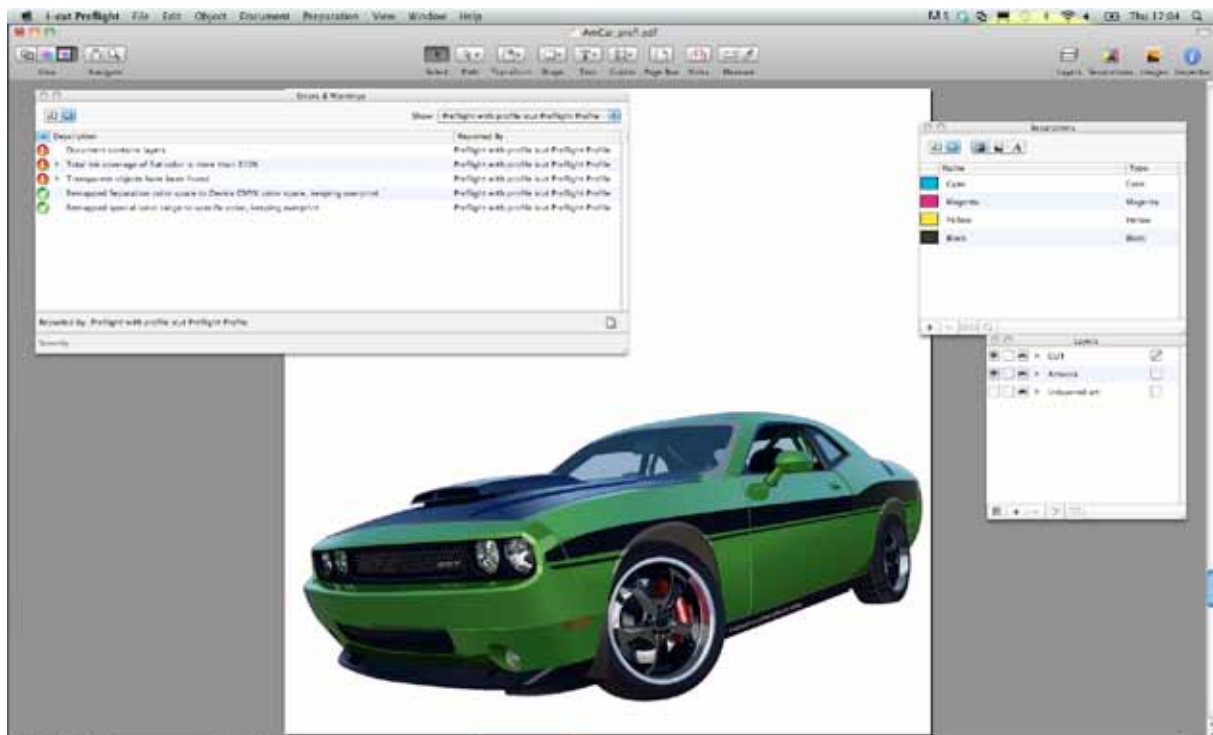
*i*-cut Preflight brings a simple PDF preflighting solution for large format digital printing.

It is the starting point for a true workflow. Problems are reported automatically, before going to print. There's no need to go into Adobe® Illustrator® and lose time trying to figure out why the file will not print properly. *i*-cut Preflight will tell automatically.

Edit text even when the font isn't present on the system. Edit multipage PDFs, increase bounding boxes, substitute low resolution images for others, convert RGB to CMYK or flatten automatically...

It's even possible to create or optimize cutting paths, to add bleeds and white separations.

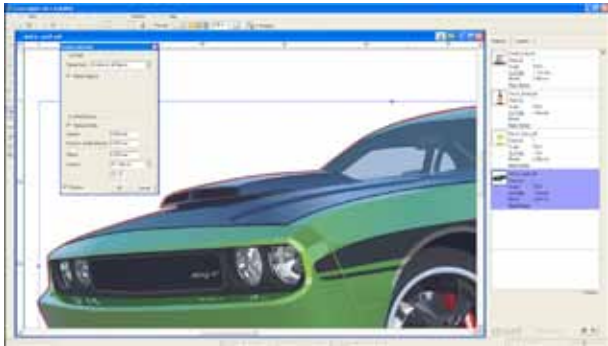
Preflighting can be fully automated via Automation Engine, Esko's workflow server. Build your preflight profiles with *i*-cut Preflight and have them executed via a workflow on Automation Engine. When operator intervention is required, a notification will be sent, the workflow will be put on hold, allowing the operator to check and correct the file. When he's finished, the workflow will resume.



PDF editing and preflighting made easy with *i*-cut Preflight

# Graphics preparation: *i*-cut Layout

“Tired of going into *Illustrator* or *Photoshop* to extract cutting paths or to create bleeds?”



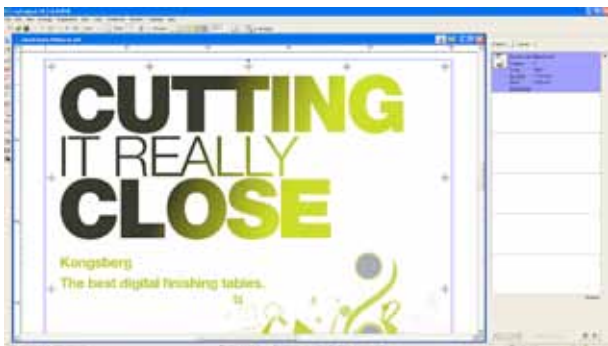
## Create cutting paths

Creating a cutting path takes a lot of work in *Adobe Illustrator* or *Adobe Photoshop*. *i*-cut Layout makes it a lot easier. Specific tools allow you to create and clean up cutting contours, even on pixel data.



## Create bleed

When the cut contour is exactly on the edge/border of the graphics, false registrations between print and cut can cause small white lines. To prevent this, *i*-cut Layout comes with an automatic bleed generation tool. The technology is even so powerful that it will clone image-pixels if there is no image data available.



## Add grommet marks

Manually adding marks (grommet marks, filename...) takes time and may introduce errors. *i*-cut Layout does it automatically.

# Layout

## Nesting

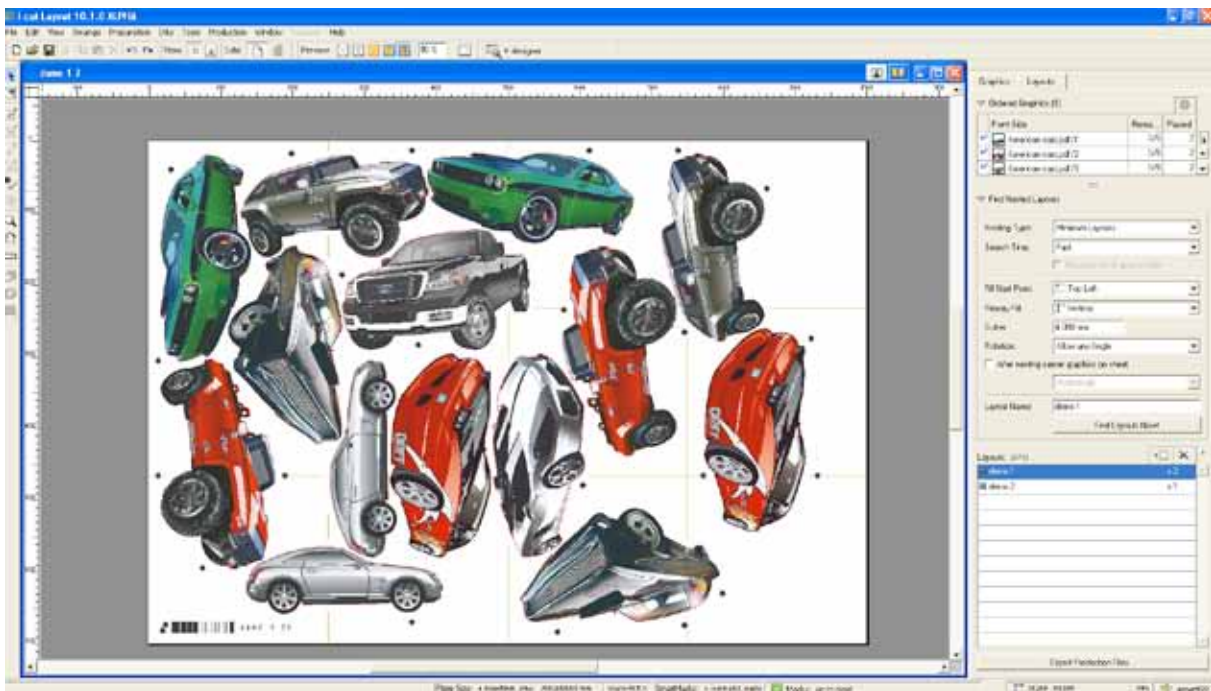
“*Tired of wasting expensive material? Tired of figuring out optimal layouts?*”

After preparing the designs individually, it is time to bring them together on the substrate. Based on the quantity specified for every design, *i-cut* Layout will optimize the sheet.

Depending on the job, there are different ways of optimizing:

- When working with **irregular shapes**, *i-cut* Layout will optimize the sheet by nesting the designs based on their cut contour. This is unique as most other software will do this based on the bounding box of the design, which results in material waste. The process can be further optimized by looking for one sheet that can be re-used multiple times. That means there's less time spent on ripping the file and on setting up the cutting table.
- When working with **rectangular shapes**, *i-cut* Layout will optimize the sheet by making sure it will have the least cuts when finishing and will optimize double contour lines.
- When working with **double-sided jobs**, a back-side will be generated automatically, back and front designs will always be in synch.

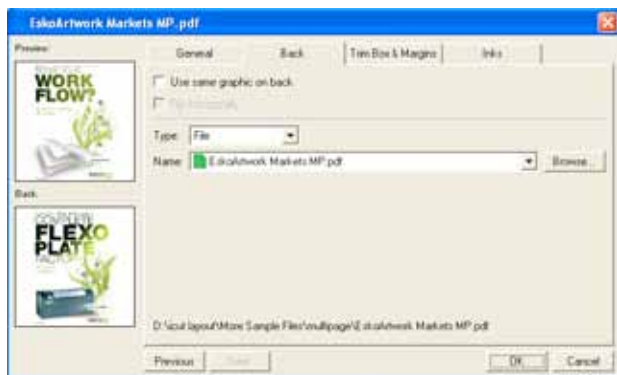
Alternatively, *i-cut* Layout can also use the substrate optimally without entering a fixed quantity, but through a maximum fill setting. For jobs that are often reprinted, this enables the user to get the absolute most out of the substrate.



*True shape nesting for the most cost efficient layout.*

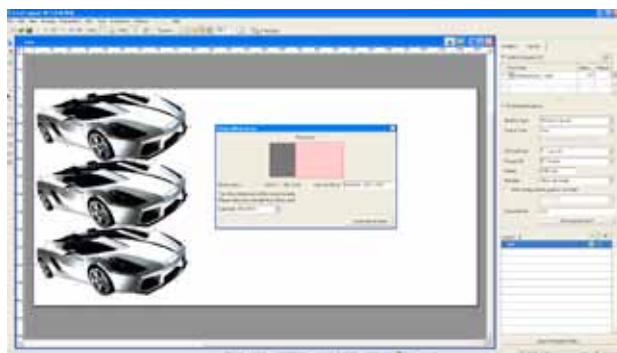
## Double sided print

“*Having trouble getting the front and back of a job synchronized?*”



When working with double-sided jobs, you can choose a design for the back. This process can be automated when the front and back are available in a multi-page PDF file.

*i*-cut Layout offers automatic nesting, creation of back side layouts and synching between the front and back side.



## Marks and offcuts

At times, deadlines will make it impossible to wait to fill a full piece of material. The Offcut manager organizes the nesting of available images to optimize usage of the substrate. It also keeps track of available scrap material for later use. This dramatically reduces waste even when meeting very tight deadlines.

After cutting out different signs, the waste matrix is typically still the same size as the material itself. With waste dividers, *i*-cut Layout will automatically steer the digital finishing table to cut the material into smaller parts, so these are easier to throw away.



## Tiling

*i*-cut Layout is perfect for oversized jobs and billboards. It provides interactive adjusting for specialty purposes, and it allows you to add gaps or overlaps with variable sizes. Irregular tiles can be defined for special applications: exhibition booth corners, wall coverings, store displays...

# Automation

*i-cut Automate* - built on Esko's Automation Engine - ties the pieces of the *i-cut Suite* together, and automates the entire prepress production process.

With *i-cut Automate*, all *i-cut Suite* functionality is now possible through dynamic workflows that can be attached to hot folders. This means far less operator intervention and fewer potential errors.

Through Mac or PC clients, operators can easily monitor the workflow and interact when necessary through a comprehensive status job list. Jobs are processed automatically, freeing operators from repetitive tasks.

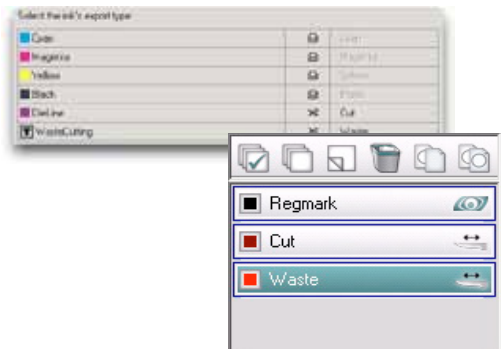


*i-cut Automate* can also be integrated with Management Information Systems, enabling automatic job creation and the submission of job parameters to the workflow via XML data.

# Connection with *i-cut Vision Pro*

“*Reduce setup time at the digital finishing table*”

When everything is ready for production, *i-cut Layout* will create 2 files, one for printing - a PDF- and one for cutting, containing all relevant cutting information. *i-cut Layout* even sends along relevant tooling information. This prevents errors later on in the digital finishing process.



## Perfect registration with *i-cut Vision Pro*

*i-cut Vision Pro* makes sure that die-less cutting contours match the printed images perfectly.

Often with other methods, slight distortions between printed graphics and contour cut may cause unacceptable results. *i-cut Vision Pro* registers the actual dimensions and positions, with a camera, on the printed result. Then, finishing is adapted to the shape of the graphics.