



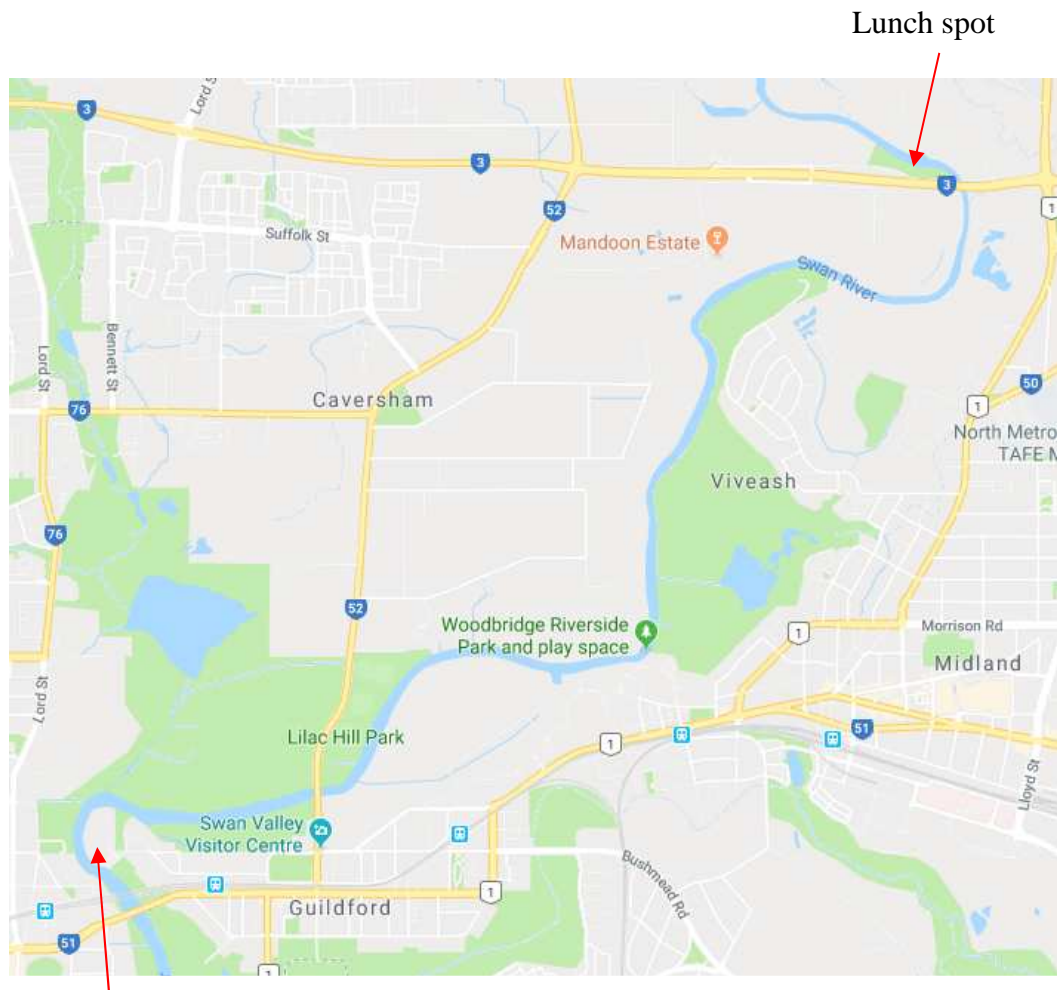
OGA

Western Australia

The Association for Gaff-Rig and Traditional Sailing

Upper Swan River picnic cruise 29 July 2018

The plan is to meet at the Guildford boat ramp located in the Fish Market Reserve and travel upstream to the Middle Swan Reserve just to the north of the Reid Highway Bridge for a picnic lunch. If time permits, we may travel a bit further upstream and explore the river to the north towards Houghton's Vineyard.



Fish Market Reserve

Schedule:

Meet at the ramp at 9.15-9.30am for a 10.00am departure. This is a motoring trip, so please invite non-sailing friends to come along. We will motor upstream to the Reid Highway Bridge, which is a distance of about 4.3 n.miles (8km). The intent is to return to the Fish Market Reserve at about 3.30pm.

We pass Sandalwood Vineyard on the way however the mooring and beach area is very small and is really set up for the wine cruise boats.



OGA

Western Australia

The Association for Gaff-Rig and Traditional Sailing

There are a number of Bridges and Power Lines over the river on the route. The Swan and Canning River guide notes these as follows, along with their clearance heights

| | |
|-------------------------------------|-------|
| Success Hill (power and water pipe) | 4.8m |
| Barkers Bridge (road) | 4.1m |
| Guildford Power Lines | 11.2m |
| Midland power Lines | 4.0m |
| Bernley Power Lines | 4.6m |
| Middle Swan Power lines | 4.2m |
| Reid Highway Bridge | 4.5m |

The guide can be downloaded from the following site. Please check it carefully

https://www.transport.wa.gov.au/mediaFiles/marine/MAC_G_Boating_SwanCanningRiver.pdf

I would strongly recommend that boats with masts either keep their rigs fully lowered or set up a mast crutch arrangement that permits safe navigation under these overhead obstacles

If the weather for the Sunday looks bad we may elect to move this cruise to Saturday 28 July. We will also monitor the river levels if there has been heavy rain.

Please contact James Bennett at jamesb@austral.com or on 041 99 69 405 if you are intending to take part.

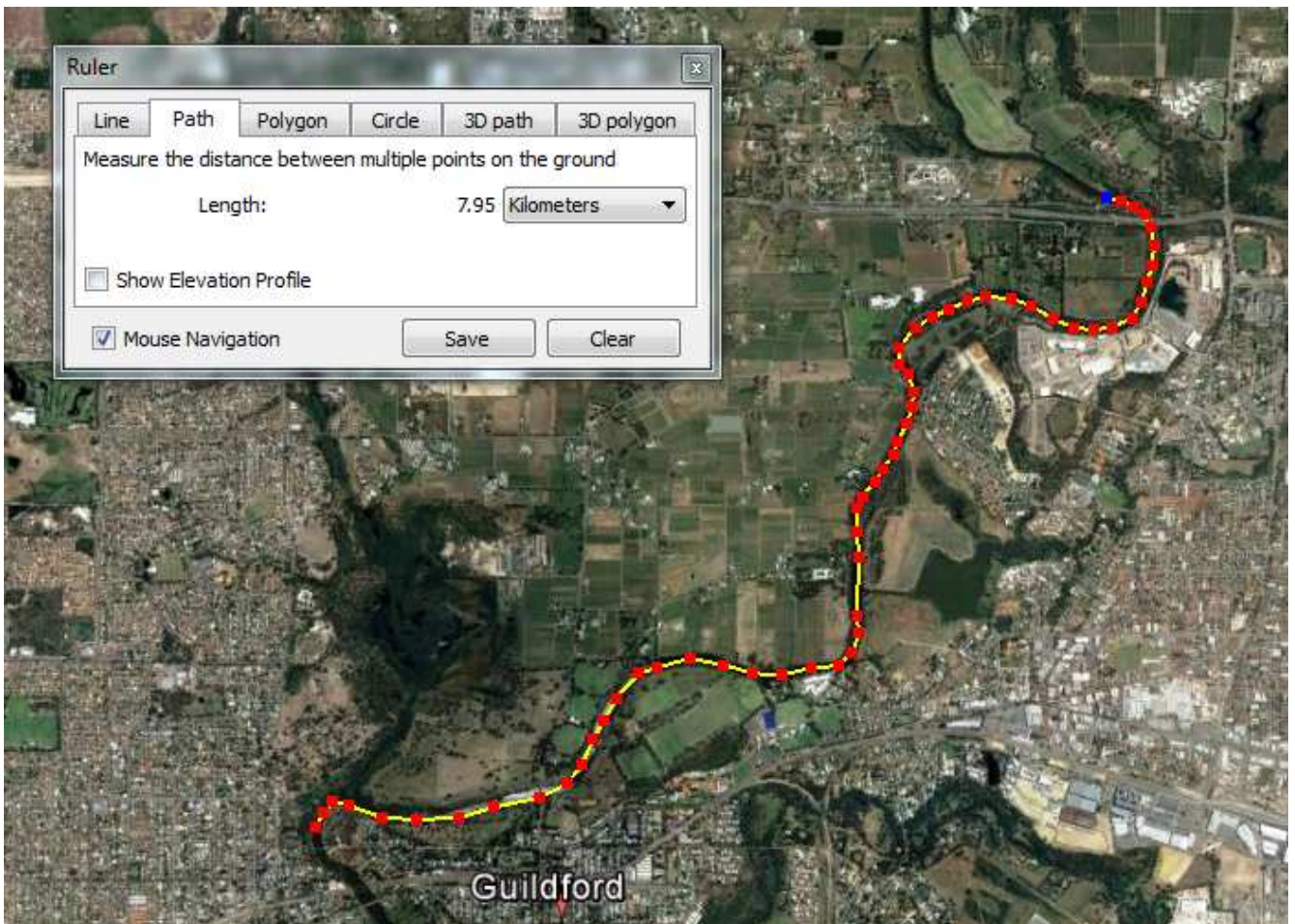


OGA

Western Australia

The Association for Gaff-Rig
and Traditional Sailing

The planned route and location of the proposed picnic spot





OGA

Western Australia

The Association for Gaff-Rig and Traditional Sailing

The ramp at Fish Market Reserve



Jim Black describes the ramp as follows: Adequate parking, good ramp, but no jetty. Care needed walking over slippery rocks to take boat round to muddy beach upriver of ramp.