

# NEWS

[Front Page](#) | [News](#) | [Sports](#) | [Business](#) | [Lifestyles](#) | [Opinion](#) | [A&E](#)

---

[Home](#) > [Featured Articles](#) > **Worker**

## Worker found crushed to death in suburban rail yard

July 25, 2011 | Staff report

Recommend 3

Tweet 0



0

A Chicago man was found dead this morning in a southwest suburban rail yard, crushed between two freight cars, officials said.

Killed was Andres Tapia, 34, of the 5600 block of South Keeler Avenue, who the Cook County medical examiner's office said was an employee at the yard.

Ads By Google

### Great US Deals on AA.com

Flights on Sale From \$76 Each Way! RT Required. Taxes/Fees Included.

[AA.com](#)

An autopsy is scheduled for this morning.

Tapia was found sometime this morning on the grounds of the Belt Railway Company of Chicago in the 6900 block of South Central Avenue in Bedford Park, according to a spokeswoman for the medical examiner's office.

He was discovered crushed between two freight cars, the spokeswoman said, though it wasn't immediately clear how that happened.

Tapia was taken to Advocate Christ Medical Center in Oak Lawn, where he was pronounced dead at 1:32 a.m.

Officials with the railway company and Bedford Park police weren't immediately able to provide details on the incident this morning.

**chicagobreaking@tribune.com**

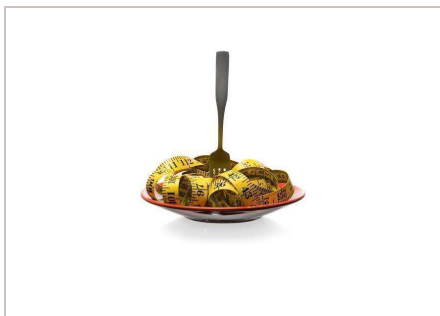
Ads By Google

### Arrest Records In Seconds

You'd be surprised what is public. Find anyone's criminal history now.

[www.instantcheckmate.com](http://www.instantcheckmate.com)

### Featured Articles



Decoding the diabetic diet



Winter boot showdown



Pacquiao knocked out by Marquez in sixth round

#### MORE:

Steps can be taken to relieve or prevent night leg cramps

China's Wanxiang wins auction for U.S. government-backed A123

Website gives Illinois customers power to compare electricity rates

Illinois moves to grant drivers licenses to illegal immigrants

New York Post cover photo: Man shown moments before his death

Texas A&M's Manziel wins Heisman

Ads By Google

### Victim of a Cruise Crime?

Helping Injured Plaintiffs Since 1971.  
Call for a Free Consultation.

[www.Lipcon.com/MaritimeLaw](http://www.Lipcon.com/MaritimeLaw)

### Related Articles

Post Office Opens 24 Hours A Day To Anyone Who Can Find It

*March 17, 1987*

Man Found Shot To Death Near New Kankakee Home

*May 23, 1995*

Postal worker dies in Bedford Park crash

*March 26, 2008*

Uaw Members Strike At Johnstown

*April 29, 1998*

Worker dies, 2nd injured in chemical center blast

*July 11, 2002*

### Find More Stories About

Worker

Bedford Park

Terms of Service  
Privacy Policy  
Index by Date  
Index by Keyword  
[www.chicagotribune.com](http://www.chicagotribune.com)

**Connect**  
Like us on Facebook  
Follow us on Twitter

