

iWellness Exam

Dr. Schwartz

OPTOMETRIST

& Associates

Who should get an iWellness scan?

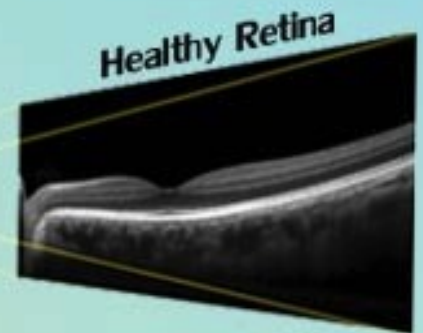
Everyone! Eye diseases can strike at any age. With the assistance of iWellness, many systemic and ocular diseases can be detected. Our eyes are the windows to the rest of our body and are the only transparent organs that allow us to view blood vessels, nerves and tissue directly. If there is vascular or tissue compromise viewed in the eye, it is likely also occurring in other organs, such as the kidneys.

What is iWellness?

The iWellness exam is state of the art technology that allows our doctors to see beneath the surface of your retina, where signs of disease first appear. It is similar to an ultrasound or MRI of and as quick as a photo.

Did you know...

- Sight threatening ocular diseases often have no signs or symptoms in the early stage.
- Early detection and treatment may reduce risks of vision loss and disease progression.
- State of the art technology can help doctors detect signs of diseases earlier than ever.



You only have one set of eyes to protect and vision is so important in your life!

Why should I get an iWellness scan?

iWellness scan provides a baseline to monitor for any changes at the microscopic level in the future. Eyes are like fingerprints; no two are the same. Having an image to reference allows your doctor to detect early changes that they may not be seen until significant progression occurs. As with most diseases, early detection gives you the best possible prognosis.

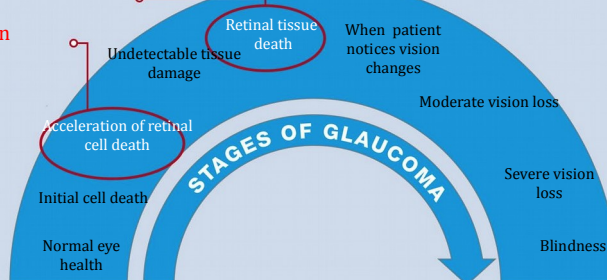
The doctors at our office feel the iWellness Exam is important in providing the best possible care, which is why we have invested in these instruments. The iWellness Exam elevates the level of care we provide by giving views of your eye that aren't viewable with current techniques.

Does my insurance cover iWellness?

Most insurance providers only cover basic services and not advanced wellness technologies and therefore yearly scans, which also include photos of the back of the eye, have a \$35 out of pocket fee. Doctors Schwartz and Koski believe this test is very valuable in evaluating ocular health because it offers early detection of vision-threatening diseases in the earliest stages when they are most treatable.

When we can before iWellness

When we can detect with iWellness

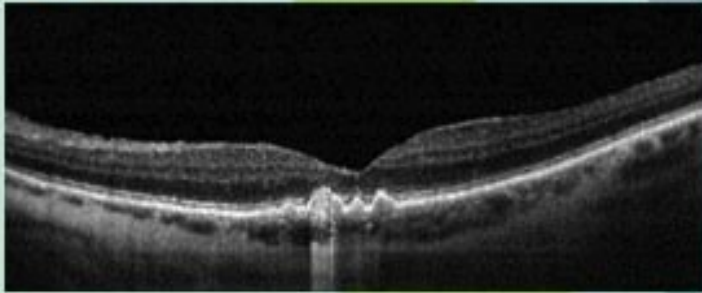


iWellness Exam

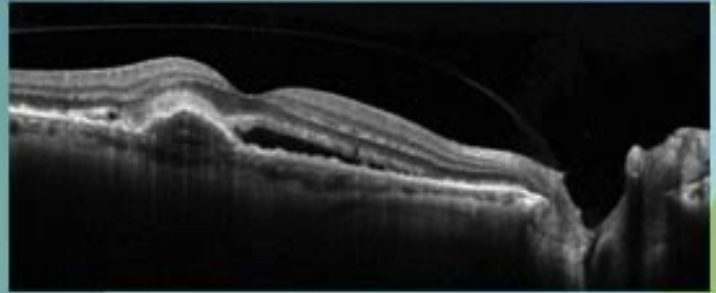
Dr. Schwartz

OPTOMETRIST

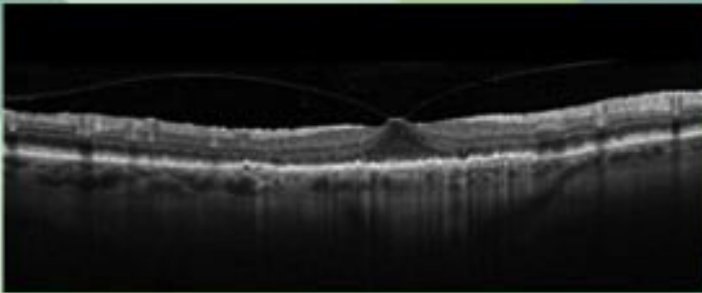
& Associates



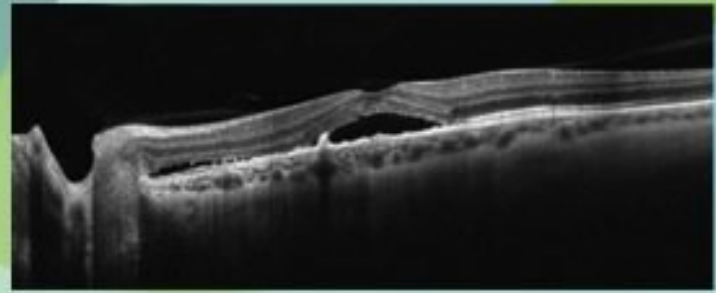
Dry Macular Degeneration affects more than 10 million Americans. This eye disease distorts your fine central vision



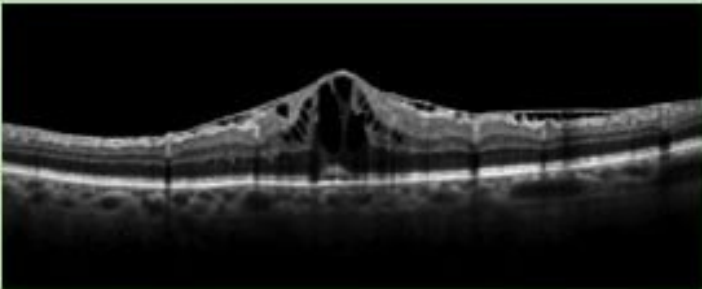
Wet Macular Degeneration is the leading cause of irreversible vision loss in people over the age of 55.



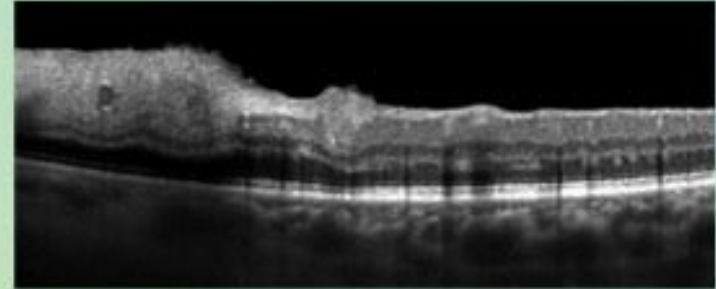
Normal shrinking of the vitreous, the jelly sack of the eye can pull on the retina, distorting your vision or pulling a hole in the retina.



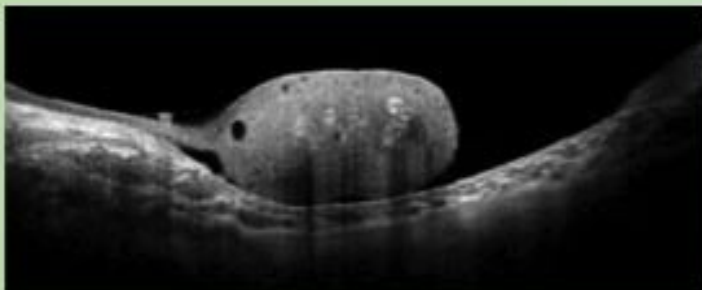
Even stress alone can lead to swelling under the retina, this often occurs between the ages of 20-45.



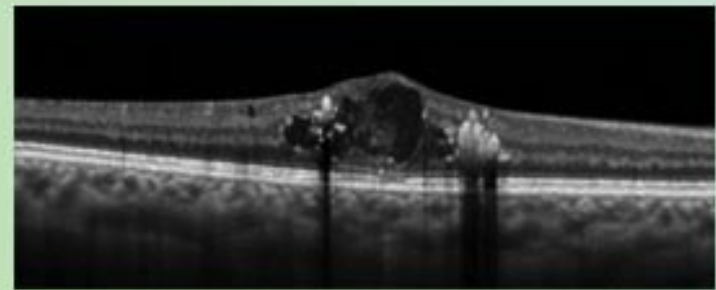
Retinal swelling may occur due to inflammation after cataract surgery.



This patient's high blood pressure caused a retinal branch artery occlusion, which is a stroke of the eye.



Cancers such as Melanoma can be discovered growing on the retina. These dangerous conditions can spread to your lungs, liver and bones leading to death.



Diabetic Retinopathy is the result of damage to small blood vessels that nourish the retina. They leak and cause swelling resulting in blurred vision. If left untreated, this can cause blindness.