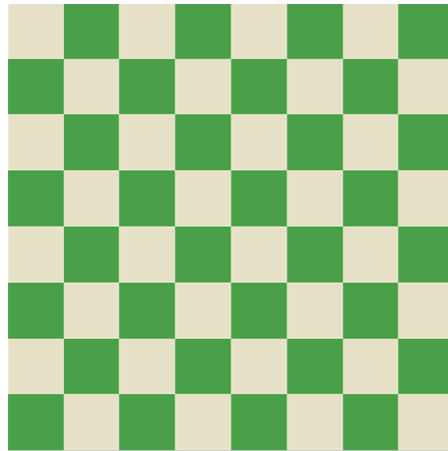


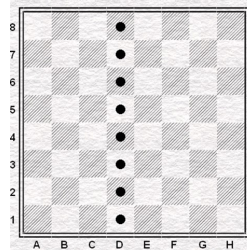
The Chess Board

Each chess board is made up of 32 light and 32 dark squares. A light square should always be in the bottom right-hand corner. (Light is on the right)

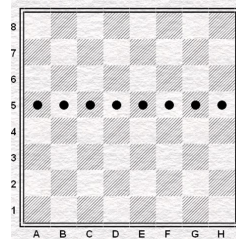


There are three important groups of squares:

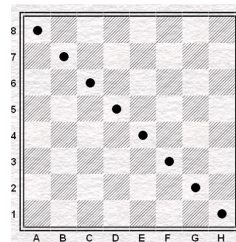
**Files—They go up and down the board
(a-h)**



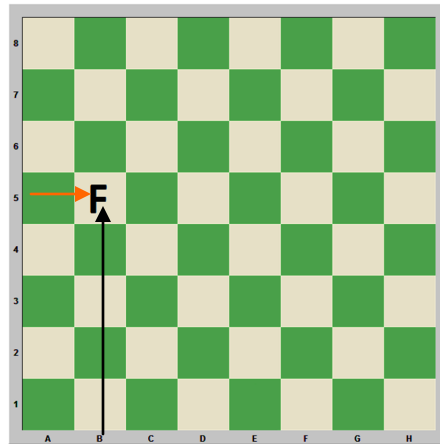
**Ranks—They go across the board
(1-8)**



Diagonals—Across the board on the same color



Each square has its own unique address on a chess board. You start with the File Letter then the Rank number to come up with the address. The address of F is b5



There are three important areas of the chess board:

