

WELCOME TO

Lake Lansing County Park North

We hope you enjoy the wildlife and natural environment which are a part of this 530 acre park area. We encourage you to leave everything where you find it for others to enjoy.



Offering five miles of trails winding through a surprisingly secluded area on the outskirts of the Lansing Metropolitan Area. A 2.4 mile loop of the trail system is marked with *interpretive signs*. Trails and boardwalks provide access to evergreen forests, swamp, marsh, deciduous forest and fields in various stages of succession.



Bicycles and alcoholic beverages are **NOT ALLOWED** on the trails.

Dogs are allowed at this County Park facility. Dogs must be kept on a leash no greater than 6' in length.

PARK HOURS

The park opens one half hour before sunrise for pedestrian access and at 8:00am for vehicle access. The park closes one half hour after sunset.

A ball diamond, basketball court, volleyball courts and horseshoe pits are available at the park for use on a first-come, first-served basis. Equipment is available for free please ask park staff.

Two small and one large **picnic shelters** are available for reservation. Call the Parks office at 676-2233, Monday through Friday, for shelter reservation information.

NEARBY COUNTY PARK FACILITIES:

Lake Lansing County Boat Launch

(across Lake Drive)

Boats may be launched after payment of a launch fee.

Lake Lansing County Park South

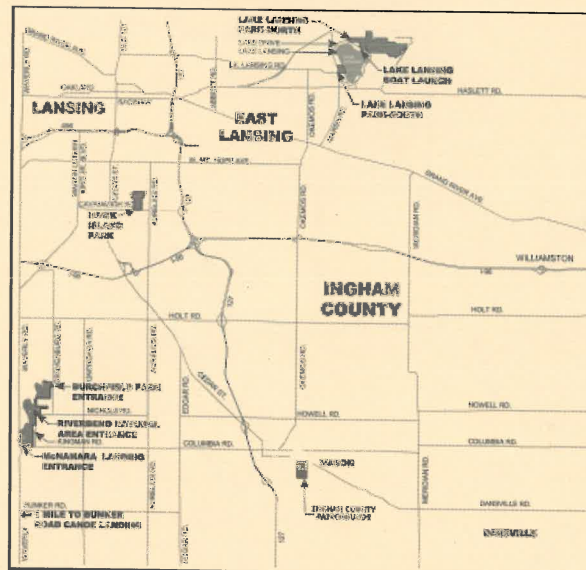
(corner of Marsh and Lake Lansing Road)

Swimming beach is open

Memorial Day through

Labor Day, weather permitting, when lifeguards are on duty.

VISIT YOUR INGHAM COUNTY PARKS OFTEN!



There is a \$3 Ingham County resident and a \$5 non-Ingham County resident per vehicle park entrance fee. Annual stickers may be purchased for \$30 for residents and \$40 for non-residents.



Ingham County Parks Department
121 E. Maple Street
P.O. Box 178
Mason, MI 48854



Lake Lansing County Park North

6260 E. Lake Dr., Haslett

NATURE TRAIL GUIDE



Keep in touch by visiting our website, follow us on Twitter or on the Lake Lansing Parks Facebook page!

www.inghamcountyparks.org



@inghamparks

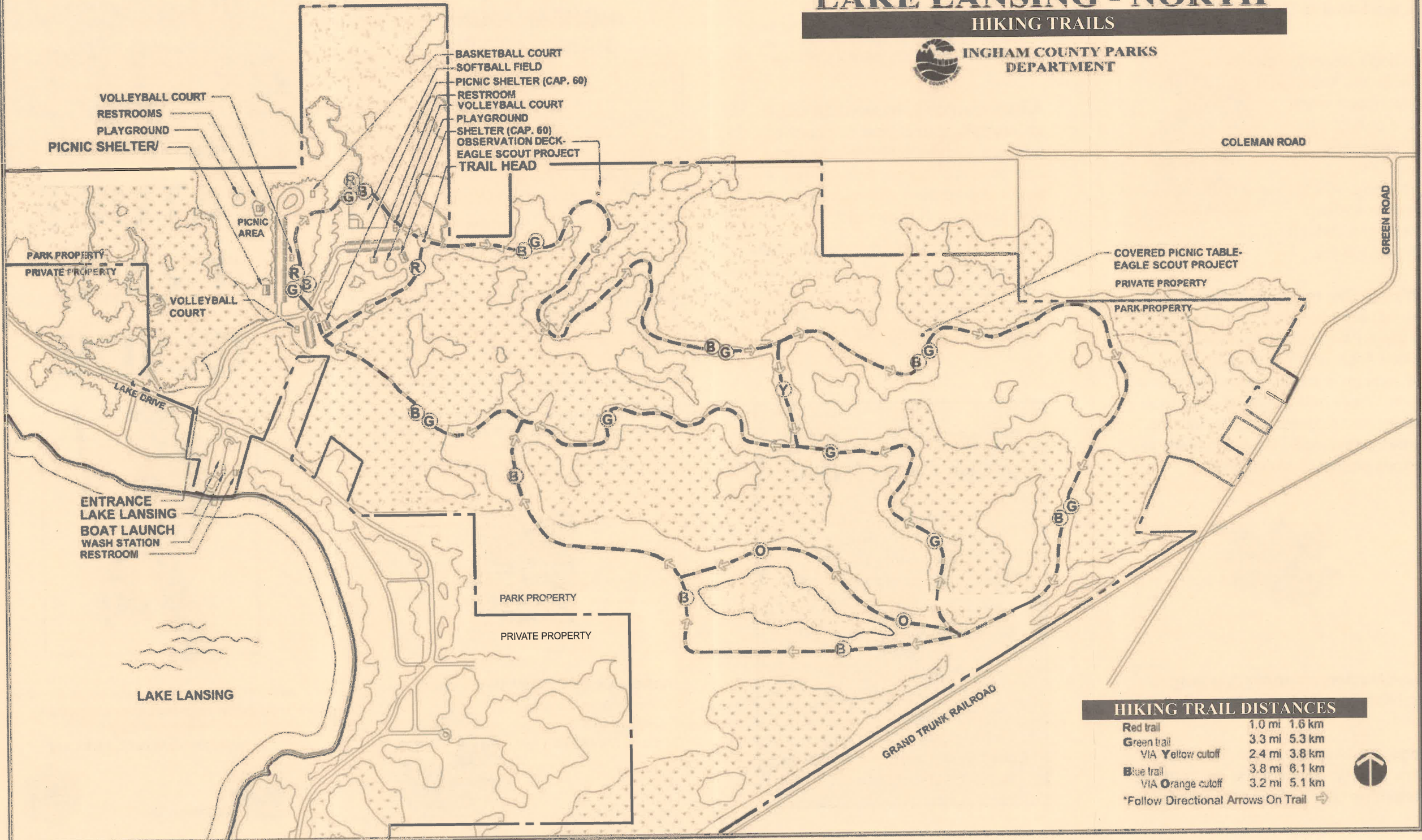


LAKE LANSING - NORTH

HIKING TRAILS



INGHAM COUNTY PARKS
DEPARTMENT



HIKING TRAIL DISTANCES

Red trail	1.0 mi 1.6 km
Green trail	3.3 mi 5.3 km
VIA Yellow cutoff	2.4 mi 3.8 km
Blue trail	3.8 mi 6.1 km
VIA Orange cutoff	3.2 mi 5.1 km

*Follow Directional Arrows On Trail →

