



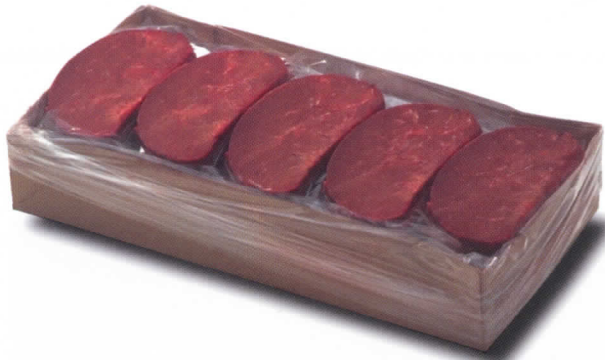
BEEF & CALF LIVER



PORTION CONTROL

FREMONT BEEF COMPANY

BEEF & CALF LIVER



PORTION CONTROL

Quality products, sliced just for you. Fremont Beef is pleased to offer portion controlled beef and genuine calf liver products packaged for freshness and taste. Our unbeatable Quality Control standards ensure this consistent quality each and every time you buy our products. Select your portion controlled products packaged with either the Golden Forest™ brand or Chef's Choice™ label.

Our pre-sliced, portion controlled products, eliminate the need for in-house preparation and handling.

Each slice is guaranteed the same consistent quality and flavor throughout the entire box.

Each individually sliced portion is deveined, skinned, pressed, and center cut for uniformity. Exact portioned weights help you meet the needs of your food service operation. Each layer is separated with a poly sheet to allow easy removal of one slice at a time.

Select the portion that best suits your needs from 2.3 oz all the way to 8 oz slices. The choice is yours.



FREMONT BEEF COMPANY
FREMONT, NE
1-800-331-4788





BEEF LIVER



VACUUM PACK

FREMONT BEEF COMPANY

BEEF LIVER



VACUUM PACK

Fremont Beef introduces our very own top quality pre-sliced beef liver. When you select Golden Forest™ Brand, you're choosing the brand that brings you the quality, freshness, and taste that's second to none. Our unbeatable Quality Control standards ensure this consistent quality each and every time you buy our products.

All of our select products are vacuum packed for freshness - the next best thing to butcher-cut meat. Each slice is deveined, skinned, pressed, and center cut for uniformity. Our resilient film packaging insures a longer shelf life.

For your convenience, package labeling is available with UPC Coding. Your choice of packaging includes Tray Pac Shingle, Four Stack Vacuum, Thin Vacuum Tray Pac, or Cubed Vacuum Tray Pac.

Select for your customers. Select for yourself. Select Golden Forest™

	Vacuum Tray Shingle Beef	Vacuum Tray Shingle Beef-Cubed	Vacuum Tray Shingle Beef-Thin Sliced
Packages Per Case	21-24	21-24	21-24
Case Net Wt.	30#	30#	30#
Case Tare Wt.	2#	2#	2#
Box Dimension	17 3/8" x 12 3/4" x 10"	17 3/8" x 12 3/4" x 10"	17 3/8" x 12 3/4" x 10"
Case Cube	1.28	1.28	1.28
Pallet Configuration	8 x 5	8 x 5	8 x 5

	Vacuum Tray Shingle Beef-Net Weight	Vacuum Tray (2x2) Beef-Flats	Vacuum Pack (4-Stack) Beef	Vacuum Pack (2,3,4 Stack) Beef
Packages Per Case	24	21-24	21-24	27-30
Case Net Wt.	30#	30#	30#	30#
Case Tare Wt.	2#	1.5#	1.5#	1.5#
Box Dimension	17 3/8" x 12 3/4" x 10"	17 1/2" x 12 1/2" x 7"	17 1/2" x 12 1/2" x 7"	17 1/2" x 12 1/2" x 7"
Case Cube	1.28	.89	.89	.89
Pallet Configuration	8 x 5	8 x 6	8 x 6	8 x 6



FREMONT BEEF COMPANY
FREMONT, NE
1-800-331-4788





CALF LIVER



VACUUM PACK

FREMONT BEEF COMPANY

CALF LIVER



VACUUM PACK

Fremont Beef is proud to bring you top quality, pre-sliced, genuine calf liver. For a tender, more discriminating taste, only genuine calf liver provides your customers just what they expect. Golden Forest™ is the brand that brings you the quality, freshness, and taste that's second to none. Our unbeatable Quality Control standards ensure this consistent quality each and every time you buy our products.

All of our select calf liver products are vacuum packed for freshness - the next best thing to butcher-cut meat. Each slice is deveined, skinned, pressed, and center cut for uniformity. Our resilient film packaging insures a longer shelf life.

For your convenience, package labeling is available with UPC Coding. Your choice of packaging includes Tray Pac Shingle or Four Stack Vacuum.

Select Golden Forest™ genuine calf liver for your customers. It's in good taste.

	Vacuum Tray Shingle Calf	Vacuum Tray Shingle Calf-Net Weight	Vacuum Pack (4-Stack) Calf
Packages Per Case	27-30	30	27-30
Case Net Wt.	30#	30#	30#
Case Tare Wt.	2#	2#	2#
Box Dimension	17 1/2" x 12 1/2" x 12"	17 1/2" x 12 1/2" x 12"	17 1/2" x 12 1/2" x 12"
Case Cube	1.52	1.52	1.52
Pallet Configuration	8 x 5	8 x 5	8 x 5



FREMONT BEEF COMPANY
FREMONT, NE
1-800-331-4788

