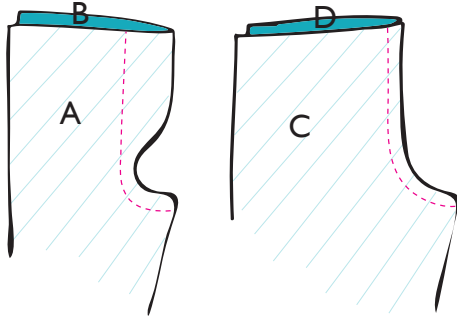
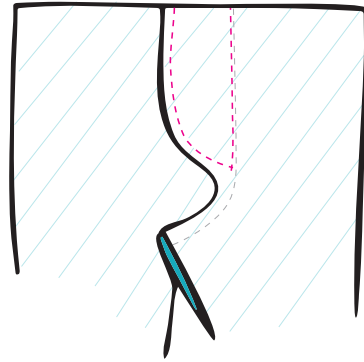


# PJ Pants INSTRUCTIONS

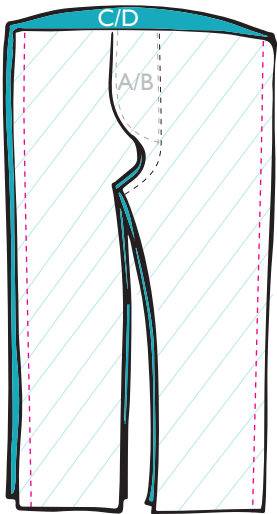
- 1** Sew side A to side B at center seam.  
Sew side C to side D at center seam.



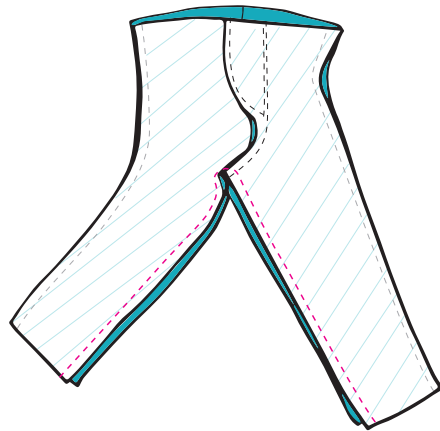
- 2** Fold over faux flap to left side and press.  
Sew around flap as shown and then down center seam. (Sew as close to center seam as possible.)



- 3** Place front side (pieces A/B) to back side (side C/D) right sides (of fabric print) together, lining up with the bottom of the legs and crotch. Sew together at outer leg edge as shown.



- 4** Sew together inside leg edge as shown. (Ironing the center seam allowance on both pieces to opposite sides helps the crotch area not to become bulky.)



Use 3/4 inch seam allowance.

**KEY**



WRONG SIDE OF FABRIC



RIGHT SIDE OF FABRIC



CURRENT STITCH



PREVIOUS STITCH

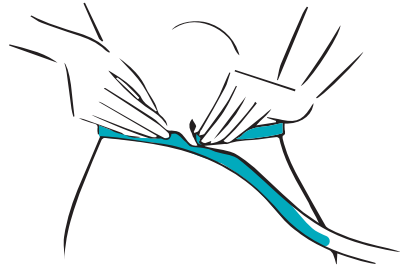


THIS SHOULD BE DONE STITCH

5

**\* Do not cut any elastic yet!**  
**Measure first, taking from the whole spool.**

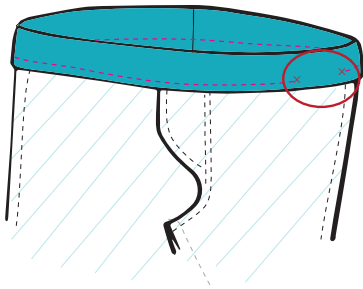
Measure elastic around waist, pull a little taught, but comfortable and mark with a pin. Cut .5 inches past pin, allowing for the seam allowance.  
Pin a large safety pin at one end.



6

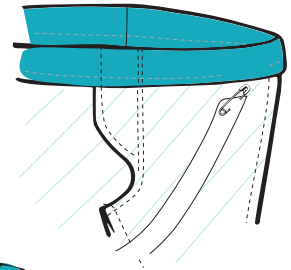
Fold top edge down 1.25 inches and press. Sew top edge with 1 inch seam allowance. See picture.

**\* Do not sew completely around top edge. Leave an inch or two opening as shown to feed elastic through.**



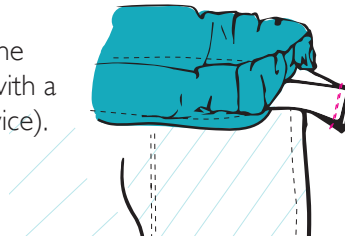
7

Feed elastic through waistband starting with the safety pin side. Use the pin to guide the elastic through the waistband to come out the other side.  
**\* Keep track of the opposite end of the elastic so you don't pull it all the way inside the waistband.**



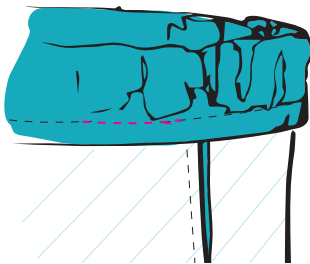
8

Making sure the elastic is flat inside the waistband, pin and sew together ends with a reinforced seam (go back and forth twice).



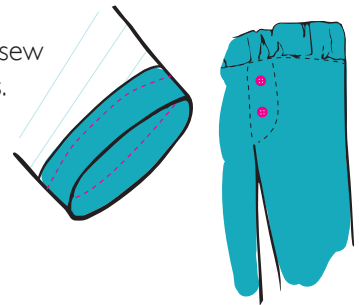
9

Sew up hole in waistband, connecting with previous waistband stitches.



10

Hem pant legs and hand sew on decorative buttons. Try on!



Use 3/4 inch seam allowance.

**KEY**



WRONG SIDE OF FABRIC



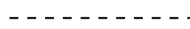
RIGHT SIDE OF FABRIC



CURRENT STITCH



PREVIOUS STITCH



THIS SHOULD BE DONE STITCH