

*the*  
**STUDIO**

P H O T O G R A P H I C



*the*  
**STUDIO**  
P H O T O G R A P H I C

---



A popular choice for fashion, commercial, advertising, editorial, film and music videos, The Studio offers an abundance of stylish props and inspired backdrops, including exposed brick walls, opulent mirrors and a collection of colourful chairs. Natural light is available or the space can be blacked out to make way for your choice of artificial lighting.

The Studio is complete with a myriad of designer, industrial, retro, victorian chairs, props, lights, walls and textures. Fitted with a commercial kitchen it is a perfect venue for food editorial photoshoots. Ample all day parking, natural light or blacked out, 3t truck access to a goods lift. Minimise your stylist pre and return days it's all here.

*the*  
**STUDIO**  
P H O T O G R A P H I C

---

**FACILITIES**  
(in venue)

- Venue as seen on website ie wall of sound, Neon light, painted floor
  - 1 unisex bathroom with 2 cubicles
  - Fully Air-conditioned space
  - Floor map attached
  - Wifi access
  - 3 phase power
  - 7 different wall colors and textures
  - Eclectic picture frames, tvs, cameras, lights etc
  - 6 x plastic catering tables can be use for makeup
  - 50 eclectic miss matched chairs
  - Selection of sofa's and lounge chairs
  - CDJ audio unit with speakers for music
  - Fridge facilities
- 

**KITCHEN | BAR AREA**  
(open kitchen)

- 6 burner gas range
  - Exhaust fan
  - 1x 2 tray turbo fan oven 90cm wide
  - 1 x 3 tray turbo fan oven 60cm wide
  - Commercial dishwasher with racks
  - Washing up sink with gas hot water
  - 5.8m x 60cm of bench space
  - Basic equipment ie oven trays, cutting boards etc
- 

**FACILITIES**  
(exterior)

- Small lift access
  - Loading dock with 3 tonne truck access (but no parking)
  - Ample 24 hour and 2 hour street parking
  - Rubbish and recycling removal
- 

**EXTRAS**  
(added cost)

- Catering
  - Camera gear and lighting equipment
  - Props and styling materials
  - Backdrops
- 

**BOOKINGS**

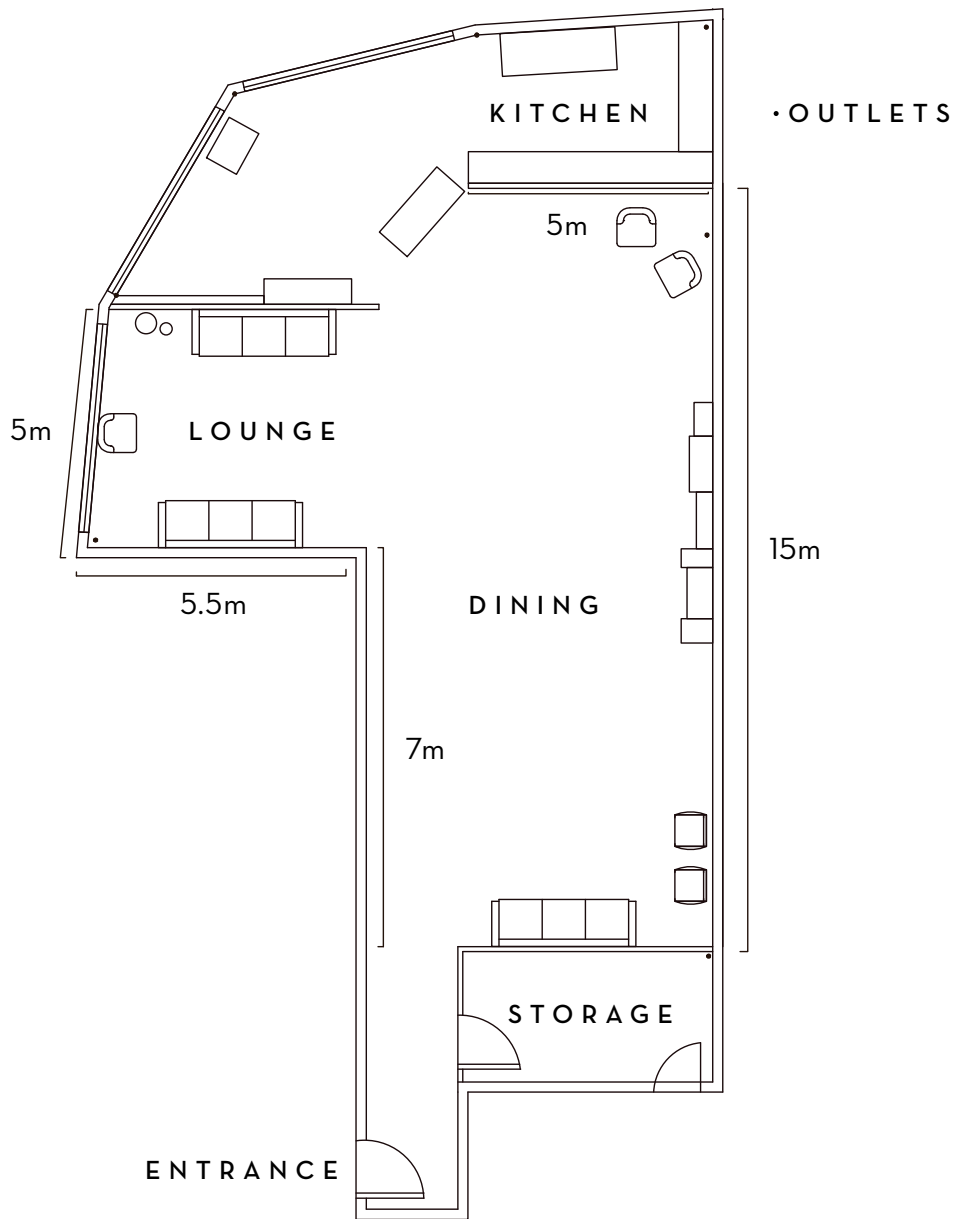
If you have any further questions or would like to organise a viewing of the space please don't hesitate to contact us at:

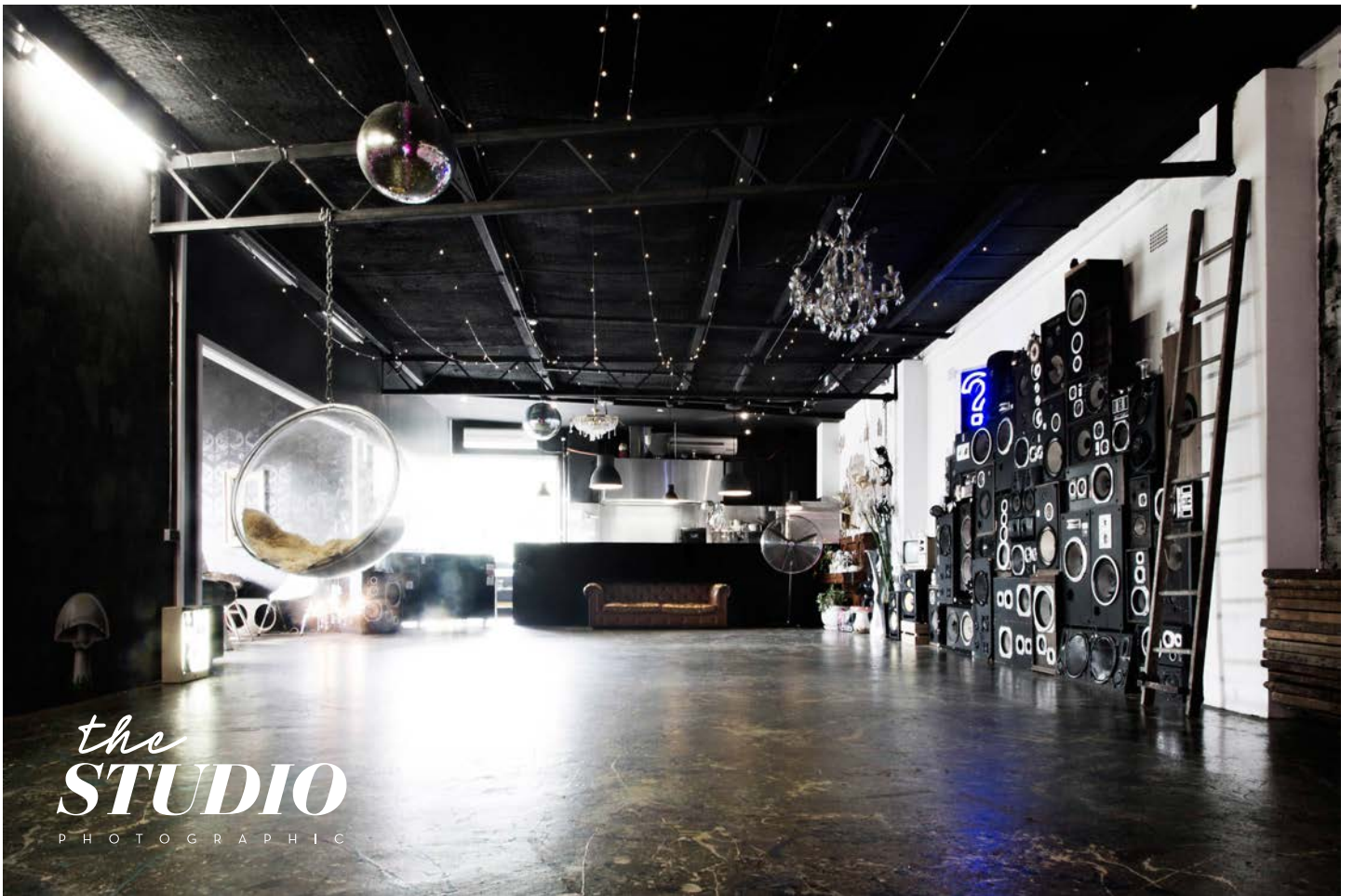
[hello@studioneon.com.au](mailto:hello@studioneon.com.au) or ph. 0413923449

---

*the*  
**STUDIO**  
P H O T O G R A P H I C

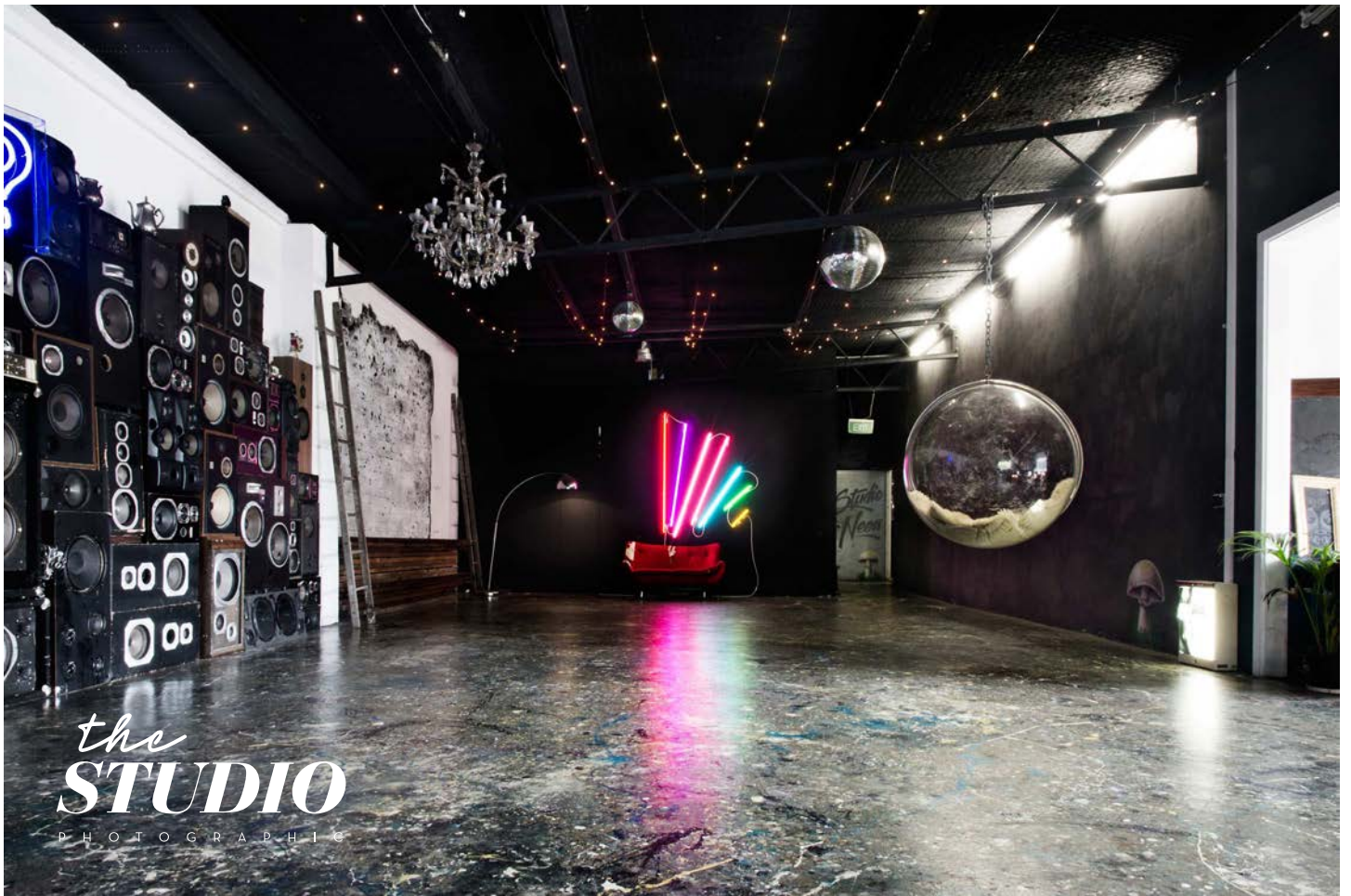
FLOOR PLAN



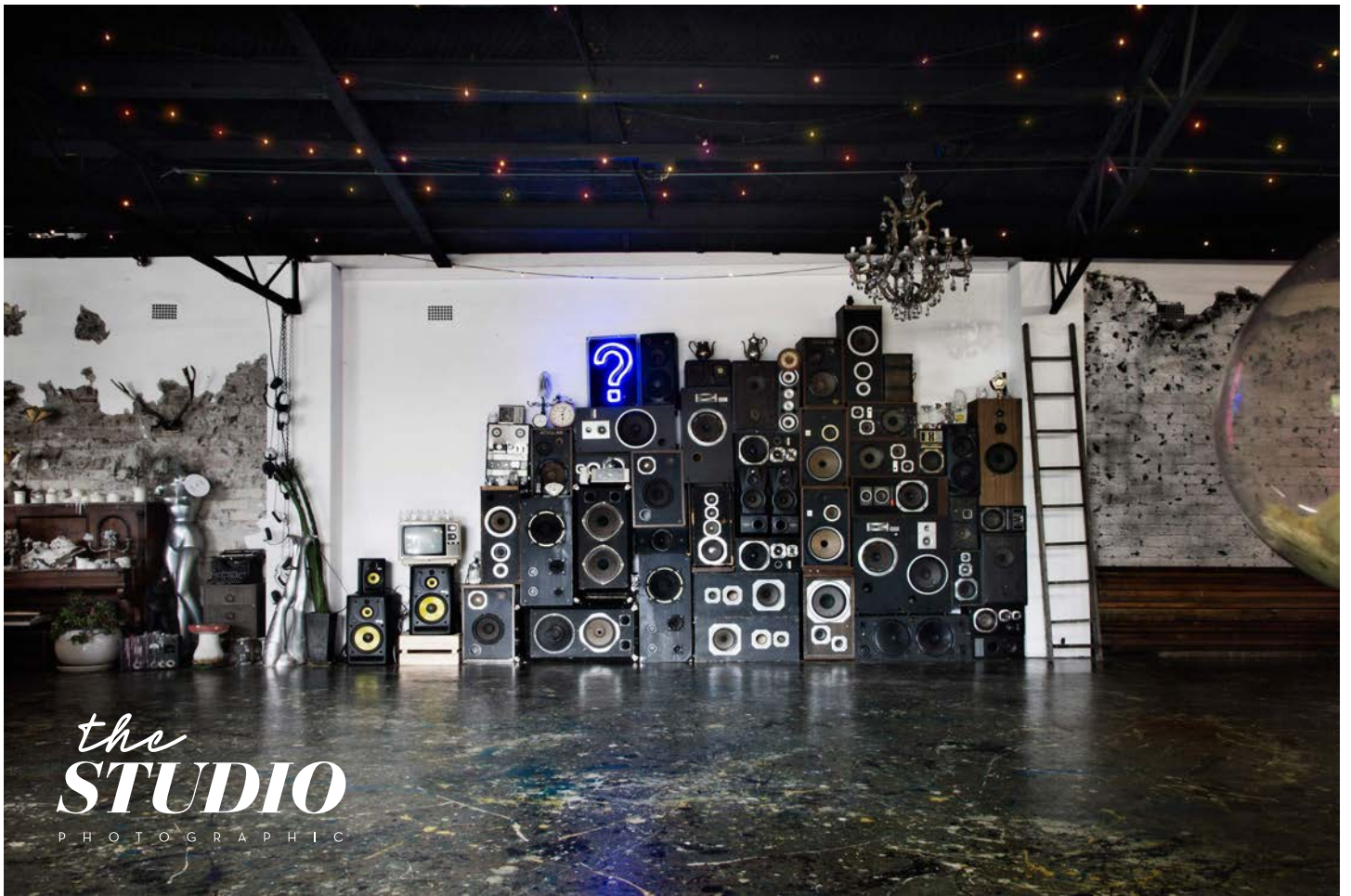


*the*  
**STUDIO**  
P H O T O G R A P H I C

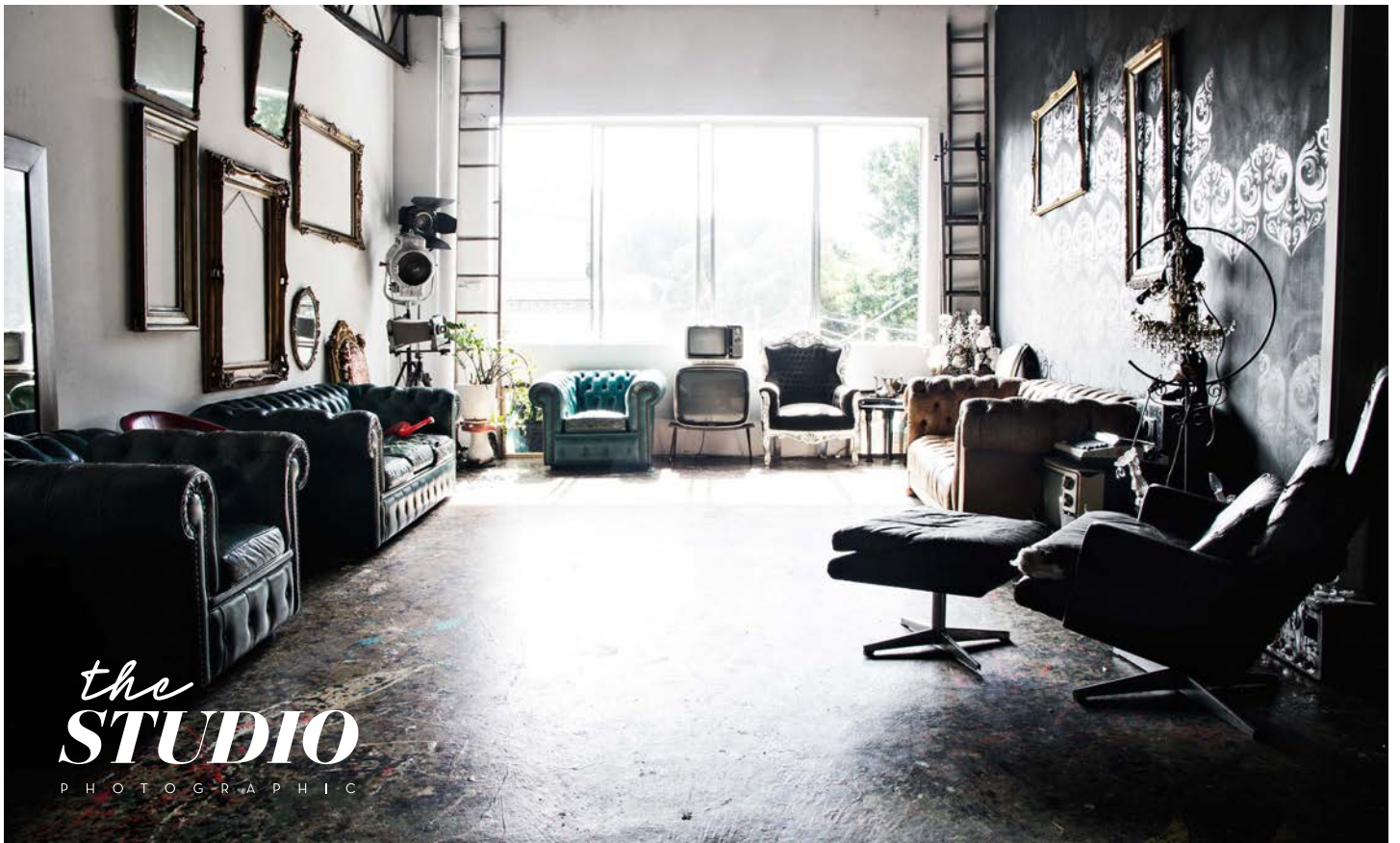
interior towards kitchen



interior towards entrance



interior towards main dining area



*the*  
**STUDIO**  
P H O T O G R A P H I C

interior towards lounge area





*the*  
**STUDIO**  
PHOTOGRAPHIC

interior lounge / bar / kitchen

*the*  
**STUDIO**  
P H O T O G R A P H I C

---

**CONTACT**

STUDIO NEON / The Studio Photographic

---

Level 2, 136 Raglan Street  
Waterloo, NSW 2017

---

OFFICE HOURS

Tuesday - Friday  
10am - 6pm

---

Phone: 0413 923 449  
Email: [hello@studioneon.com.au](mailto:hello@studioneon.com.au)  
Website: [www.studioneon.com.au](http://www.studioneon.com.au)

---