



west hartford art league

2017 Winter Classes

MONDAY

BEGINNING DRAWING

Zbigniew Grzyb 8 weeks

Level: Beginner

Students will learn the classical drawing process using fundamentals such as perspective, proportion, how to organize space on paper, as well as the philosophy of what drawing is. Students will build a strong foundation of skills, beginning with the very basics: drawing a straight line and developing manual abilities using a pencil. The class builds from there, with students drawing curved lines, cubes, and moving on to still life drawings. The instructor demonstrates each step and by the end of the session students will have completed drawings using the techniques learned throughout the session. Class is limited to 10 students so that each student will receive individual attention. Please bring a large drawing pad, pencil and an eraser to the first class.

Zbigniew Grzyb attended the Academy of Fine Art, Crakow, Poland. He is the 2001 winner of Pollock-Krasner award, and 2001 individual artist grant from the GHAC. Grzyb' exhibits his work widely, including solo shows at the New Britain Museum of American Art, Real Art Ways and the National Museum in Poland.

ZG113 | Monday, January 23rd – March 13th | 9:00AM - 11:00 AM

Clubhouse Classroom

Fee: Member \$126.00 Non-Member \$151.00

AN ENRICHED SURFACE/ A MASTER CLASS FOR PAINTERS

Ilona Levitz 10 weeks

Level: Intermediate and Advanced, Acrylic & Oil



This is a class for representational and abstract painters who work independently and are ready to take on new skills. Based on your present work you will learn to develop new strategies to create a body of expanded and enriched surfaces.

There will be individual and group critiques, a look at the great masters and presentations by the instructor to inspire your creative process.

New students, please bring a recently completed painting so I will have an understanding of your present work and how to move it to the next level.

Any questions/ info@islevitz.com

Ilona Levitz is a graduate of Vesper George School of Art, Boston. She studied at Trinity College, Hartford, as well as the Wesleyan University graduate program and Hartford Art School. She has paintings in American and European collections. Ilona has also been featured in "Who's Who in American Art."

IL111 | Monday, January 9th - March 13th | 9:30AM – 12:30PM

Upstairs Schoolhouse

Fee: Member \$240.00 Non-Member \$265.000

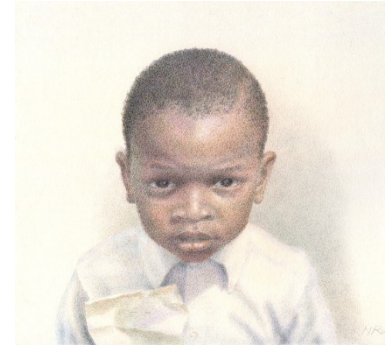
GRAPHITE DRAWING CLASS

Nan Runde 10 weeks

Level: Beginner to Advanced

Whether you've been drawing for years or have no idea where to start, this course will help you find your unique voice as an artist through the medium of graphite. Simple yet versatile, a pencil drawing can be as bold or as subtle as you are. This course will offer a variety of strategies for working with graphite and developing a drawing as well as overcoming the obstacles to creating art. A materials list will be provided after registration. A \$5 materials fee for paper will be collected on the first class.

Nan Runde is a graduate of the Lyme Academy College of Fine Arts, where she completed her degree with honors in 2012, and is now a full-time studio artist. Runde's work has appeared in juried exhibits in Boston, Arizona, New York, and throughout the state of Connecticut. Nan has exhibited at the Slater Memorial Museum, the New Britain Museum, Lyme Academy, and many more.



NR321 | Monday, January 9th – March 13th | 1:00PM – 4:00PM

Clubhouse

Fee: Member \$210.00 Non-member \$235.00

LANDSCAPE PAINTING IN THE TONALIST TRADITION

Paul Batch 10 weeks

Level: Beginner to Advanced

Painting in the tonalist tradition allows for the artist to interpret the landscape into poetic imagery. Through in-class demonstrations, we will discuss techniques used to create dramatic landscapes. Landscapes will be painted in oils using photos, en plein air sketches and memory as references. This class is open to all levels seeking a creative alternative to traditional plein air painting methods and philosophies. Although oils will be the primary medium discussed in class, the use of other media is welcomed.



Paul Batch is a realist painter who recently completed his MFA at the Hartford Art School. Paul's award winning paintings have been exhibited nationally and can be seen in galleries throughout CT. Paul is a member of WHAL, the Connecticut Society of Portrait Artists and is an elected artist at the CT Academy of Fine Arts.

PB 112 | Monday, January 9th – March 13th | 1:00PM – 3:30PM

Upstairs Schoolhouse

Fee: Member \$210.00 Non-Member \$235.00

WHEEL THROWING FOR ADULTS

Ann Lennon & Charlene Li 10 weeks

Level: Beginner to Intermediate

There is a \$25 fee for 25 pounds of clay. Students must purchase clay from the Art League office before the start of class. Glazes and firing are included in the class fee. Additional clay can be purchased at the same fee if needed during the session.

The course will cover basic pottery wheel throwing techniques along with more advanced skills as the student progresses. Students will learn how to embellish their pieces with carvings, handles and other accents. A variety of glazes are available to complete each piece. Students will have completed pieces by the end of the class session.

Classes will be co-taught by Ann and Charlene. They look forward to meeting you and exposing you to the wonderful world of working with a medium that will be sure to challenge and center you.

Students are required to bring their own pottery tool kit available at Jerry's Artarama and most art supply stores. The kit should include: needle tool, large and small ribbon/shaving tool, wire tool and rib. Cost of the kit at Jerry's is approximately \$7.99. There is a \$25 fee for 25 pounds of clay. Glaze and firing are included in the class fee. Additional clay can be purchased at the same fee if needed during the session.

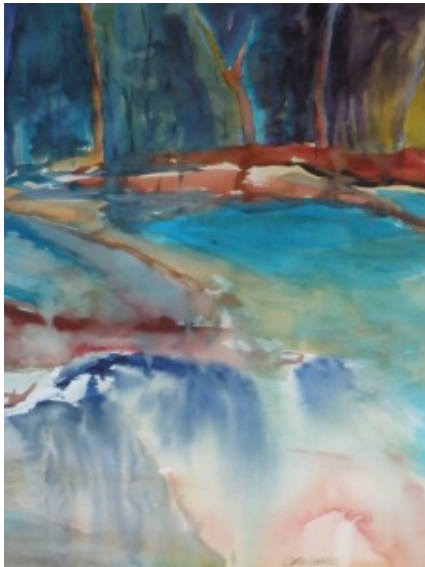
Charlene Li's interest in pottery started in 2008 when she took her first pottery class with master potter, John Macomber at Greenleaf Pottery in South Windsor, CT. She has continued her work there, developing her skills at the wheel as well as hand building and slab work.

LL112 | Monday, January 9th – March 13th | 6:00PM – 9:00PM
Downstairs Schoolhouse
Fee: Member \$270.00 Non-Member \$295.00



MONDAY NIGHT WATERCOLOR, ACRYLIC OR MIXED MEDIA COLLAGE – YOUR CHOICE

Carol Ganick 8 weeks
Level: Beginner to Advanced



Open to all levels! NOTE TO NEW STUDENTS....IT IS SUGGESTED THAT BEGINNING STUDENTS IN PAINTING START WITH WATERCOLOR. A LIST OF MATERIALS WILL BE PROVIDED. DISCUSS WITH INSTRUCTOR.

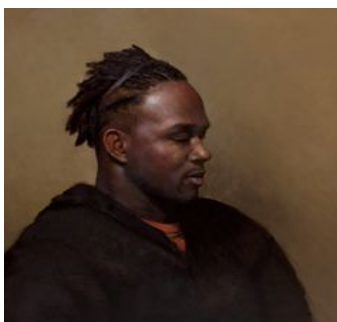
This semester students may choose to work in traditional painting methods or water media collage. This course aims at meeting the individual needs of the student and supporting his or her growth as a painter. Beginners are given close attention and assignments that emphasize color mixing, application and brush use. Experienced students will be challenged to help refine their skills, spontaneity and confidence as they concentrate on a subject matter of their own or instructor's choosing. New students are asked to contact the instructor at 860-233-2023 to discuss materials and painting experience. Work by Carol Ganick and her students may be seen at www.flickr.com/carolganick.

Carol Ganick is a graduate of Boston University. She has been a CT Watercolor Society Award Winner in 1999, 2001 and 2004. Carol specializes in teaching traditional beginning and intermediate watercolor technique.

CG143 | Monday, January 16th – March 6th | 5:45PM – 8:45 PM
Clubhouse Classrooms
Fee: Member \$175.00 / Non-Member \$200.00

MONDAY PORTRAIT PAINTING

Paul Batch 10 weeks
Level: Beginner to Advanced



This class will be a concentrated step-by-step approach to painting a portrait. We will be working from live models. Classes will cover a wide range of issues from organizing your palette and anatomy of the face to different approaches to the actual painting. Model fee to be collected at each class. Maximum of 8 students.

PB241 | Monday, January 9th – March 13th | 6:30PM – 9:30PM
Upstairs Schoolhouse
Fee: Member \$210.00 Non-Member \$235.00

TUESDAY

WATERCOLOR WORKOUT

Bob Noreika 10 weeks

Level: Intermediate to Advanced

This class will focus on simplifying the subject: seeing the simple values and then sketching them into a full color painting. Learn how to take an unsuccessful watercolor and recreate it with fluid acrylics. Many techniques will be demonstrated including ink and watercolor wash.

Bob is a graduate of Paier School of Art and has been a professional artist for forty years. A prominent national award winning artist and illustrator, his paintings hang in both corporate and private collections throughout the United States, Europe, and Japan. He is represented in numerous galleries and teaches and lectures throughout New England.

RN213 | Tuesday, January 10th – March 14th | 9:00AM– 12:00PM

Clubhouse Classroom

Fee: Member \$210.00 Non-Member \$235.00



BEGINNING PAINTING

Pieter Lefferts 10 weeks

Level: Beginner

This class will cover the basics; color theory, composition, under-painting methods and problem-solving will all be discussed in this 10 week class. A supply list will be emailed to you upon registration. Bring all supplies to the first class. Minimum of 4 students required. *See Pieter's work below.*

Pieter Lefferts is an accomplished painter, and a teacher to many about connections between nature, art, music, and the color weaving them together. Pieter received practical training in drawing and painting with Hilary H. Holmes at the Art Students League of New York, as is a graduate of Lewis & Clark College in Portland, Oregon. Lefferts is the recipient of numerous awards for his artistry and for his work as an arts educator. His paintings are in collections throughout North America.

PL511 | Tuesday, January 10th – March 21st | 9:30AM - 12:30PM *There will be no class on January 17th

Upper Schoolhouse

Fee: Member \$210.00 Non-Member \$235.00

INTERMEDIATE PAINTING

Pieter Lefferts 10 weeks

Level: Intermediate to Advanced



You will learn advanced color concepts, theory, value, glazing techniques and compositional applications to further your artistic knowledge and prepare you to be able to compose and harmonize your finished work with ability and confidence. Materials list is available upon enrollment.

PL512 | Tuesday, January 10th – March 21st | 1:00PM - 4:00PM

*There will be no class on January 17th

Upper Schoolhouse

Fee: Member \$210.00 Non-Member \$235.00

WEDNESDAY

CONFIDENT LANDSCAPE PAINTING

Shauna Shane 10 weeks

Level: Beginner to Advanced

Beginning with an informative demonstration, Shauna tells her students the “what, why and how” that result in a successful painting. A materials and supplies list will be given out at the first class. With specific, individual instruction, you will learn how to block in a painting in terms of shadow and light, see the most basic masses in the landscape, and understand how to use color and atmosphere. Photos, master paintings and plein air will be discussed as reference. Known for her positive and enthusiastic teaching, Shauna welcomes all levels. Oil, pastel or acrylic.

Shauna Shane has been a professional painter for over 35 years. She is a former Resident Artist at Yellowstone National Park, as well as resident artist at the New Britain Museum of American Art, 2008. Shauna has paintings in collections around the world including the official portrait of the governor of Montana in 1990. www.shauna-shane.com.



SH311 | Wednesday, January 11th – March 15th | 9:30AM – 12:30PM

Upper Schoolhouse

Fee: Member \$210.00 Non-Member \$235.00

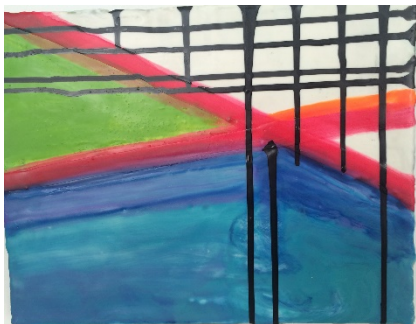
ENCAUSTIC PAINTING

Binnie Birstein 10 weeks

Level: Beginner to Intermediate

This 10-week course open to all levels will immerse you in painting with a medium that begins to harden the moment it leaves its heat source. You will learn about wax and medium, painting and fusing, working the surface to achieve various textures, substrate options, archival issues, and safe studio practices, as well as historical roots. Throughout the course we’ll look at contemporary artists working in encaustic and see how varied approaches to the medium are utilized.

All supplies are provided for the first class. Medium and basic paint colors will be provided. Students will provide supports and some other supplies for following classes. Individual concerns will be addressed. Most importantly, why use encaustic, and how encaustic can be incorporated into your work. *What can the medium do for you? What can you do with the medium?*



Binnie Birstein is known for her complex layering of images, energy lines and grids. She has exhibited nationally and internationally in England and Japan, extensively in the Northeast in many prestigious exhibitions and invitationals, including the two museum exhibitions of “Swept Away: Translucence, Transparency, Transcendence In Contemporary Encaustic,” at the Cape Cod and Hunterdon Art Museums. Other venues include the Everson Museum of Art, the New Britain Museum, Chautauqua Institute, and Memorial Art Gallery. Birstein has attended all of the International Encaustic Conferences, presenting and teaching.

BB311 | Wednesday, January 11th – March 15th | 9:30AM – 12:30PM

There will be no class on January 18th or February 15th

Clubhouse Classroom

Fee: member \$277.00 non-member \$302.00 - *Students are required to pay an additional \$50 materials fee.*

MAKING YOUR MARK IN CONTEMPORARY ABSTRACT ART

C. Dianne Zweig 6 Weeks

Level: Beginner to Advanced

Abstract artists who would like to add more spontaneity to their artwork will explore a variety of mark making approaches to help reinvigorate and “morph” their contemporary styles into more interesting and finished works of art. Emphasis will be on the language of line and spontaneity, chaos and control, figuration to abstraction, action versus quiet, color, shape using both traditional and unconventional art products, materials and tools. Assignments will integrate the use of wet and dry media, pen and ink products, painting and collage. Emphasis will be on resolving artistic dilemmas in creative ways which incorporate innovation as well as group critiques.

All levels of students welcomed.

A materials list is available at: <http://www.cdiannezweig.com/workshops/>

C. Dianne Zweig is a Contemporary Mixed Media abstract artist whose artwork is influenced by the organic shapes and abstract designs of 1950s textiles. She is a member of Connecticut Women Artists and a founding member of Mixus, a group of women artists who work in Mixed media. Dianne is also enjoys teaching art classes and workshops to all ages.



DZ312 | Wednesday, January 11th – February 15th | 1:00 – 4:00

Clubhouse Classroom

Fee: Member \$138.00 Non-member \$163.00

OIL PAINTING

William Simpson 10 weeks

Level: Beginner to Advanced

This course will concentrate on refining composition, color and drawing, to better focus your work and get the most from the image you choose. We will also talk about how to relax and have more fun, and in the process learn to paint more intuitively. I will bring my own paintings in process to class, so we can discuss how I work, while I learn how you work. All approaches to painting are welcome. A suggested materials list will be available upon enrollment.

With a BFA and MFA in Painting, Bill Simpson has been represented by galleries in Maine, Connecticut, and Cape Cod, and has won numerous awards in juried shows across Connecticut. Bill is an Elected Artist at the West Hartford Art League and CT Academy of Fine Arts, and has placed large scale corporate commissions through Connecticut, NY, and Washington DC.

WS321 | Wednesday, January 11th – March 15th

1:00PM - 4:00PM

Upper Schoolhouse

Fee: Member \$210.00 Non-Member \$235.00



ABSTRACT EXPRESSIONISM 101

Zbigniew Gryzb 8 Weeks

Level: Beginner to Intermediate



An Introduction to Abstract Expressionism, working from concept to canvas, exploring and discussing style, technique, composition, color theory and meaning. Examining works by Mark Rothko, Barnett Newman, Hans Hoffman, Willem De Kooning and Joseph Albers. Working with acrylic and oil, canvas and panel, large and medium brush, pallet knife, and unconventional tools.

ZG122 | Wednesday, January 25th – March 15th | 6:00PM– 9:00PM

Clubhouse Classroom

Fee: Member \$175 Non-member \$200

DEVELOPING YOUR PERSONAL STYLE

Brian Colbath 10 weeks

Level: Beginner to Intermediate

Using landscape as the starting point the student will experiment with different styles and techniques of painting. The ultimate goal is to understand the painting process and the development of your own personal style. The preferred medium is oil but students are welcomed to work in any medium.

Brian Colbath is an accomplished artist working in greater Hartford for over twenty years with numerous commissions for artwork and murals. He is the recipient of the CT Watercolor Society first place award in 2003. Colbath is represented by the David James Gallery, Glastonbury, the James Stephen Gallery in Farmington, and Vanderbilt Gallery in Nantucket.

BC341 | Wednesday, January 11th – March 15th | 6:30PM – 9:30PM

Upstairs Schoolhouse

Fee: Member \$210.00 Non-Member \$235.00



THURSDAY

MIXED MEDIA

Michael Toti 10 Weeks

Level: Beginner to Advanced



Explore, experience and enjoy this fascinating art form in your own way and at your own pace. In this class, you'll explore a variety of collage techniques and materials that will challenge you and foster growth no matter what your artistic level.

Class will include:

- Weekly warm-up exercises/assignments that focus on experimental composition and building backgrounds.
- Weekly demonstrations of techniques or sources of inspiration.
- Regular critiques that cover the elements of good design and execution, and encourage innovation and creative growth.

The class will focus on the basics of paper collage but students will be encouraged to use a variety of media during the term. There is no materials fee, but a materials list will be available at registration. Beginner and experienced collagists welcome! Weekly warm-up exercises/assignments that focus on experimental composition and building backgrounds.

Weekly demonstrations of techniques or sources of inspiration. Regular critiques that cover the elements of good design and execution, and encourage innovation and creative growth. The class will focus on the basics of paper collage but students will be encouraged to use a variety of media during the term. There is no materials fee, but a materials list will be available at registration. Beginner and experienced collagists welcome!

Michael Toti has been designing since 1978. He has received his BFA from the Swain School of Design, and his MFA from Washington University in St. Louis. Toti currently teaches graphic design both on ground at Manchester Community College, and online with the Art Institute of Pittsburgh.

MT413 | Thursday, January 12th- March 16th

9:30AM - 12:30PM

Clubhouse Classroom

Fee: Member \$210.00 Non-Member \$235.00

WHEEL THROWING FOR ADULTS

Donna Namnoum 10 weeks

Level: Beginners

There is a \$25 fee for 25 pounds of clay. Students must purchase clay from the Art League office before the start of class. Glaze and firing are included in the class fee. Additional clay can be purchased at the same fee if needed during the session.

This course will cover basic pottery wheel throwing techniques where students will continue to improve their skills in centering, throwing and trimming pottery forms. Students will learn to make the two most common forms from which almost all pottery stems; a cylinder and a bowl. From there we will learn more advanced skills and how to embellish our pieces with carvings, handles, additions and/or other accents. Students will be required to bring their own pottery tool kit available at Jerry's Artarama and most art supply stores, which should include; needle tool, large and small ribbon/shaving tool, wire tool, rib, and small elephant ear sponge. Cost of tool kit at Jerry's is approx. \$7.99. Minimum 6 students / Maximum 8 students

Donna Namnoum has a BA in Art Education, SCSU, and an MA from the Hartford Art School, University of Hartford. Before retiring from the West Hartford Public Schools as an administrator, Donna taught art and developed a strong high school ceramics program. Donna has exhibited her wheel thrown sculptural ceramics in solo exhibits locally and in group exhibitions throughout the country and has been the recipient of numerous awards and artist's grants including an individual artist's grant from the Connecticut Commission on the Arts.



DN442 | Thursday, January 12th – March 16th | 6:00PM – 9:00PM

Downstairs Schoolhouse

Fee: Member \$270.00 Non-Member \$295.00

FRIDAY

FRIDAY MORNING WATERCOLOR, ACRYLIC OR MIXED MEDIA COLLAGE – YOUR CHOICE

Carol Ganick 8 weeks

Level: Beginner to Advanced

Open to all levels! NOTE TO NEW STUDENTS....IT IS SUGGESTED THAT BEGINNING STUDENTS IN PAINTING START WITH WATERCOLOR. A LIST OF MATERIALS WILL BE PROVIDED. DISCUSS WITH INSTRUCTOR.

This will be an informal painting class with individual instruction and guidance as needed. Defining and working toward your specific goal will be the primary focus of the class. Students may work on paper or canvas in any water medium of their choosing including acrylic, watercolor, gouche, ink, and collage with painted papers. Drawing with ink or pencil is also acceptable. No oils or dry pastel. This semester students may choose to work in traditional painting methods or water media collage. All levels are welcome to join this class. Students will be encouraged to experiment by combining media if this would help advance their goals.

Students may work from subject matter they bring to class, abstract forms or subject matter provided by the instructor which may include photographs, actual objects or flowers.

Some individuals may also choose to work on the grounds of the Art League, weather permitting.

Students may contact the instructor at 860-233-2023. Work by former students may be seen at

www.flickr.com/carolganick. The instructor's website is www.carolganick.com.

CG143 | Friday, January 13th – March 3rd | 9:30AM– 12:30PM

Clubhouse Classroom

Fee: Member \$175.00 Non-Member \$200.00