

portsidenewyork.org
redhookwaterstories.org

PortSide New York

A living lab for better urban waterways. We bring WaterStories to life.

Bringing the communities ashore and afloat closer together.

Join PortSide in creating a future-focused, maritime center

Our planned maritime center has building space and an active landing for diverse boats. It combines working waterfront, public access and community development. This builds on our 12-year experience with pop-up programs and interim sites.



Help develop an exciting, innovative maritime place

Programs for the general public and services to the working waterfront



Recent news about funding and space will lead to strong growth in 2018.

We seek board members, funders, volunteers, advisors, educators and you!

#GetOnBoard



At the PortSide we plan, working waterfront and creative Brooklyn meet

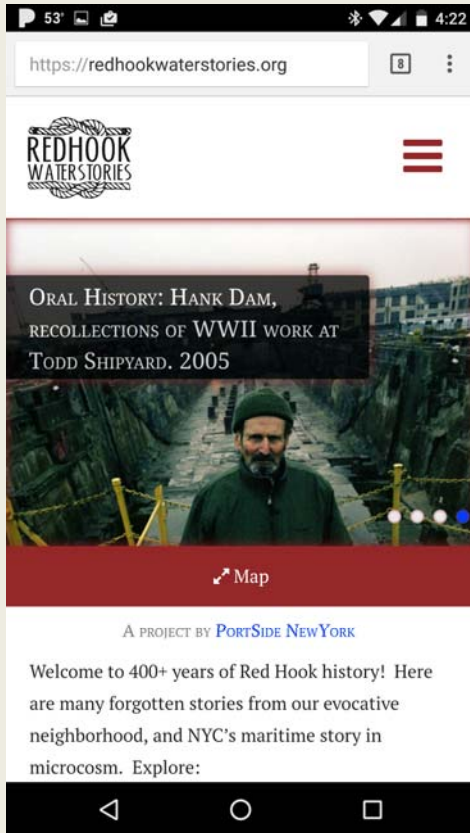
Crew from workboats come ashore to get provisions and other services. The public takes excursion vessels on harbor tours. The public tours our ship MARY A. WHALEN along with visiting vessels.

The scene of boats coming and going is a living maritime museum that we explain. An authentic working waterfront is positioned as an attraction and community amenity.



Related digital programs

We grow our e-maritime museum and community guide [Red Hook WaterStories](https://redhookwaterstories.org) and create related programs and experiences for schools and the general public.



Learning, play, meaningful experiences flow together

Youth build boats, use boats, restore our ship, learn to fish, grow during [internships](#).
Schools tour our ship and others, use the wet lab and habitat installations on the pier.



We create a pipeline to marine careers for youth and adults

People find out about, and prepare for, maritime jobs via our educational and cultural programs, maritime training classes, and exposure to the maritime activity on site.



Additional elements of the future PortSide

A resiliency center educates the community about marine weather and floods.

- This builds on our Sandy recovery work (which won a [White House award](#) and NYS Senate honors) and resiliency work (appointed by NYS Governor's Office to Red Hook's NY Rising committee).

Our maritime library is used by all ages.

Books n Bait! Our store sells educational materials, bait & tackle, PortSide gifts, light eats.

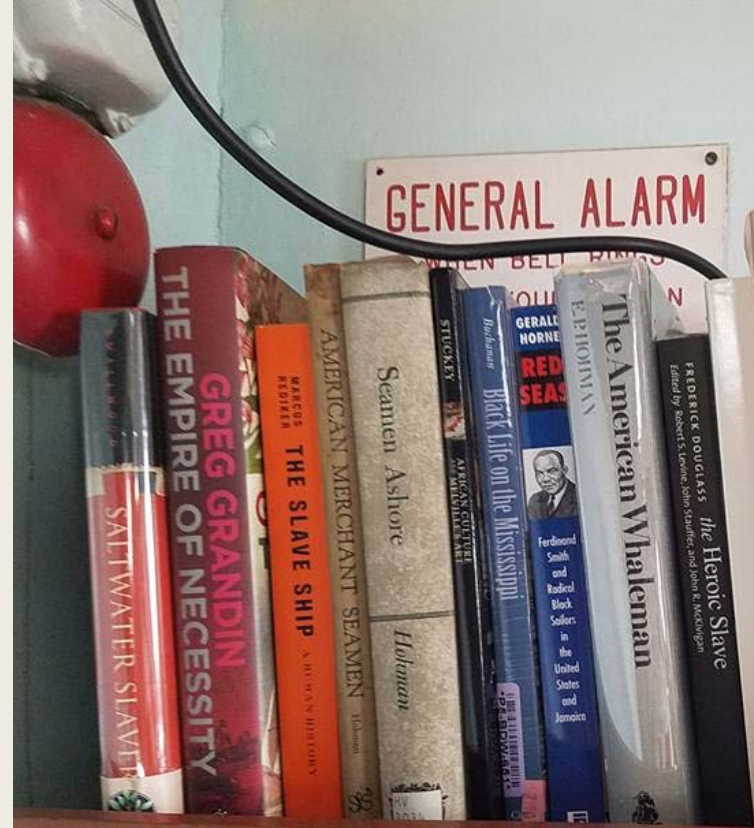


Photo: Veronica Price

Our history

For 10 years, we negotiated temporary permits while looking for a long-term home

From 2005-2015, we created innovative waterfront programs in diverse locations (our ship and others, parks, storefronts, shipyard, container port).

In 2015, we secured a long-term spot for the ship. In 2016, vessels of a commercial partner joined us. We are preparing for ship upgrades and expansion ashore in 2018.



Current home: the MARY A. WHALEN at Pier 11, Atlantic Basin, Red Hook, Brooklyn

Built in 1938. On the National Register of Historic Places. Last of her kind in the USA. The only oil tanker in the world repurposed for public programs. In use while undergoing restoration. Located [here](#).



Now: dynamic maritime activity in Atlantic Basin

This site perfectly fits our vision due to the varied and high levels of maritime activity: containerport, cruise terminal, NYC Ferry dock, diverse vessels on Pier 11.



Now: Commercial partner Lehigh Maritime

Marine repair and training

Their vessels and activity alongside our ship.

Repair of a 100 year-old ferry (under blue tarp).

Our partners in restoring the MARY A WHALEN & creating our maritime training programs.

Bringing a towing endorsement training program (TOAR) to Atlantic Basin.



Now: Small Boats

we use a rowboat, kayak & rowing machine for youth education



2018: Create business plan for building space

November 2017, the NYC Economic Development Corporation (EDC) offered us a means to get building space alongside the ship. They asked for a business plan. To make it, we seek funders, architects, planners, community input.

[#GetOnBoard](#)



Building space will provide:

Launch of services and programs that don't fit on the ship:

- Shop for boat building and STEM + CTE (vocational ed)
- Classroom training for merchant mariner licenses
- Boating safety classes for recreational boaters
- Space for WaterStories exhibits, movie screenings, etc.
- Culture and education programs for large groups

Space that is **NOT weather-dependent** (unlike the ship deck) allowing a predictable program schedule, more programs and year-round ones.

ADA program space and ADA office space.



Building space means:

There is a PortSide place that people and boats can visit while our ship visits other communities.

We get our offices off the ship which then enables:

- Full restoration of the ship interior.
- More tours of the ship interior. We can't do many tours while our offices are aboard.
- Better, larger office space. Ship spaces are cramped and have many impediments to modern office work.



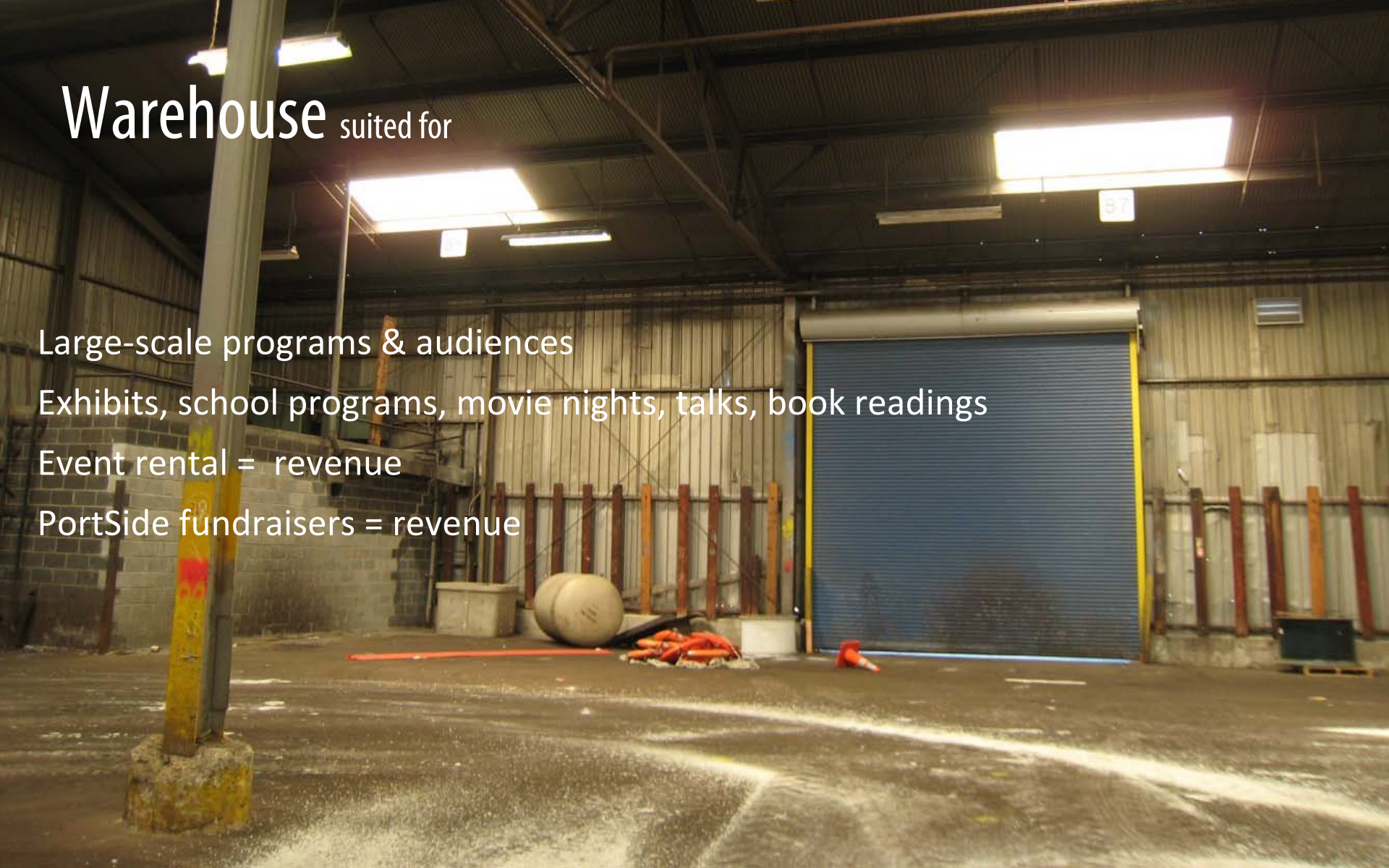
Warehouse suited for

Large-scale programs & audiences

Exhibits, school programs, movie nights, talks, book readings

Event rental = revenue

PortSide fundraisers = revenue



Garage at right becomes a shop used for boat building,
STEM + CTE vocational programs, repair of the MARY A. WHALEN



Warehouse mezzanine over office suited for



Dark area for video screening

Office resiliency: raised space to evacuate computers etc.

Suite of three offices, conference room & hall suited for



Mariner training classes

School programs

Maritime reading room

PortSide offices

Museum store

Movie nights, talks , book readings, small exhibits



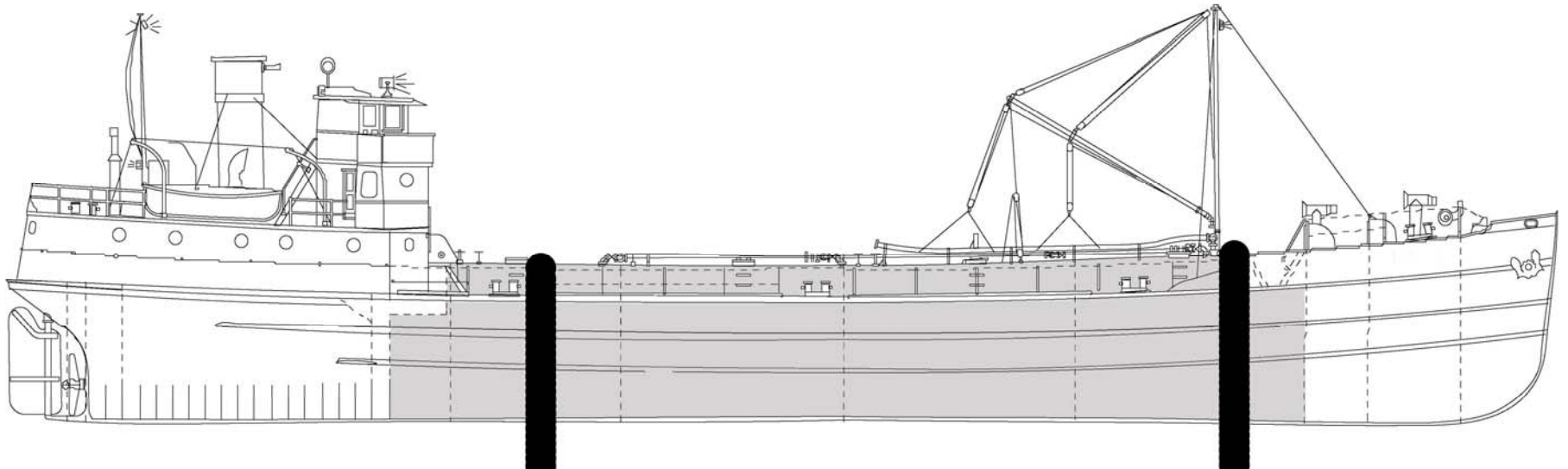
Loading dock suited for



- May-October outdoor programs
- School programs
- Movie nights, talks, book readings
- area for small shipwork projects

2018 FEMA Sandy project on MARY A. WHALEN

We finished a 5 year paper chase and have \$231,000 committed from FEMA to complete [a resiliency project](#) on the ship. This will add a generator, collapsible gangway and browstand, fabricate removable, internal pilings (“spuds,” the black tubes below). The sleeves (“spudwells”) for these pilings are installed. The forepeak will be blasted and coated to again hold ballast water to put the ship in trim for the spuds. We need to raise \$26,000 and get legal assistance writing federally compliant procurement policy, RFP and contracts. Must all be done by 7/1/18.



Let's grow PortSide NewYork!

Let's create a place that shapes NYC WaterStories!

