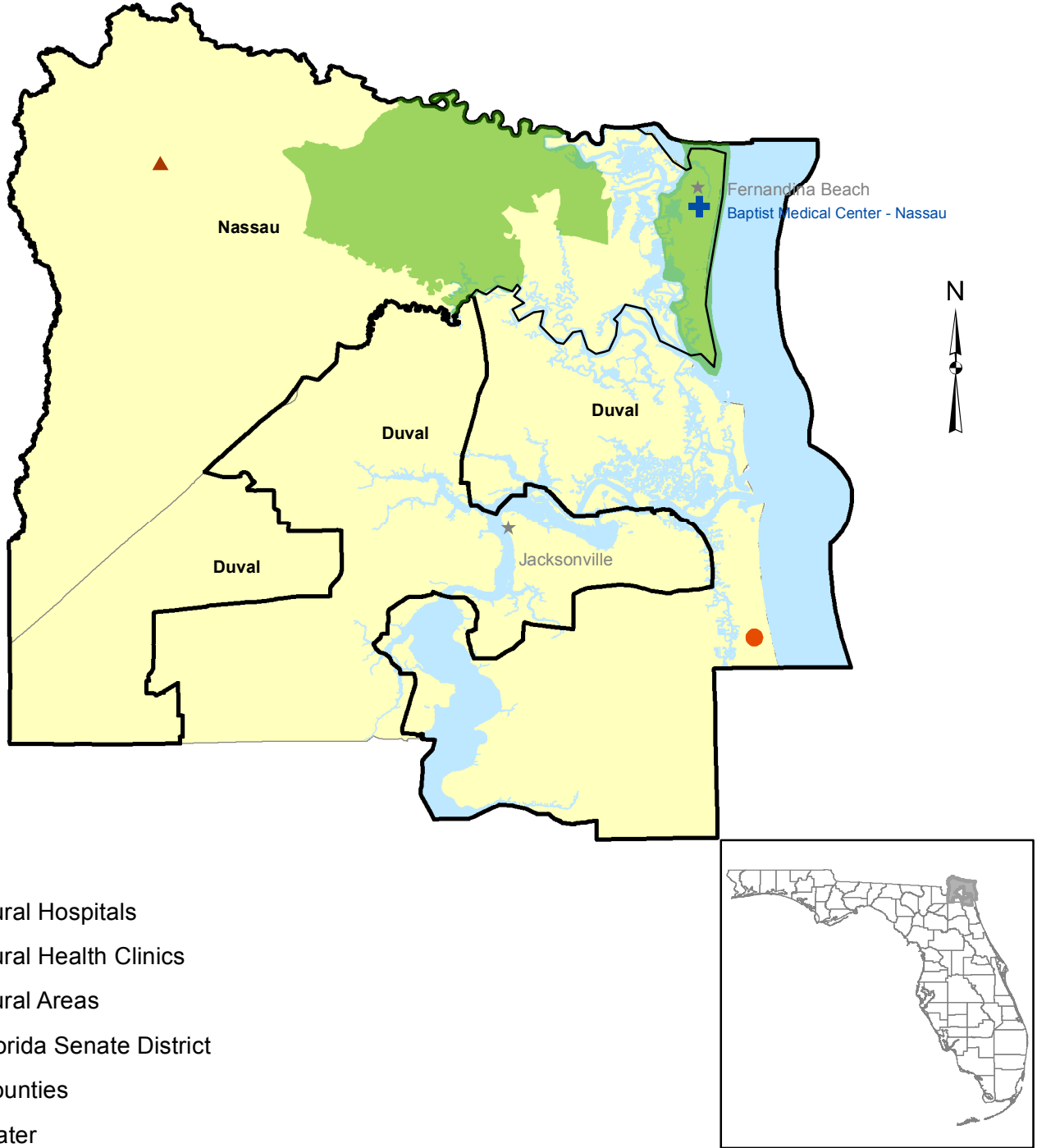


# Florida Senate District 4

Senator Aaron Bean

Nassau and Portions of Duval Counties



0 15 30 60 Miles

Rural Areas are defined by the Office of Rural Health Policy (ORHP)/  
Health Resources and Services Administration/US Department of Health and Human Services, in the document entitled:  
"List of Rural Counties And Designated Eligible Census Tracts in Metropolitan Counties".

Sources: Florida Department of Health Office of Rural Health, U. S. Census, U.S Department of Agriculture, HRSA Office of Rural Health Policy  
Data processing and cartography: FSU College of Medicine, Florida Department of Health Office of Rural Health, January 2015

## FLORIDA SENATE DISTRICT 4

### FLORIDA'S RURAL HEALTH STATUS, HEALTH ACCESS, & QUALITY:

- Florida's age adjusted death rate for residents of rural counties exceeded those of urban residents for 20 of the 25 leading causes of death for the period 2011 through 2013;
- Florida's non-white rural infant mortality rate was over twice the urban and rural rates for whites.
- Florida had the second highest percentage of uninsured, non-elderly persons (24.2%) in the U.S. in 2013; the percentage of uninsured in Florida's rural counties was 34.4% in 2011.
- The percentage of Florida's uninsured children under 18 increased to 11.1% and was the 5th highest in the nation in 2013;
- Florida received a low average rating compared to other states on achievement of healthcare quality benchmarks for the 2013 National Healthcare Quality Report;
- Florida ranked 43rd among states and the District of Columbia on the Commonwealth Fund Scorecard on State Health System Performance for Low-Income Populations in 2013.

### UNINSURED & ACA MEDICAID ELIGIBILITY BY COUNTY (2011):

	Est. # Uninsured	Est. # Eligible for ACA Medicaid Expansion
Senate District 4	79,906	18,899
Rural Counties (30)	176,687	41,741
Florida	3,853,386	910,324

### PRIMARY CARE PHYSICIAN NEEDS: (2014)

HPSA: Health Professional Shortage Area; MUA: Medically Underserved Area; MUP: Medically Underserved Population

	# HPSAs	# MUAs	# MUPs
Senate District 4	1	1	0
Rural Counties	82	30	1
Florida	244	66	61

\* As determined by federal HPSA criteria

### ● PRIMARY CARE (PC) LOCATIONS 2014: (excludes dental, vision, & behavioral health sites)

	Federally Qualified Health Center Sites	Rural Health Clinics
Senate District 4	1	1
Florida	275	153

### RURAL HOSPITALS:

"Rural hospital" means an acute care hospital with 100 or fewer beds and an emergency room.

**Critical Access Hospital (CAH)** means a small rural hospital with 25 or less beds that provides limited inpatient and outpatient services to residents of rural areas.

**Number of Rural Hospitals in Florida: 29; Number of Rural Hospitals in District 4: 1**

**# of Critical Access Hospitals in Florida: 13; # of Critical Access Hospitals in District 4: 0**

Baptist Medical Center - Nassau; Fernandina Beach, FL
-------------------------------------------------------

### ● Rural Hospital Impact on the Local Economy (2013):

Rural Hospitals	# Hospital Employees (FTEs)	Uncompensated /Charity Care \$ Provided	\$ Bad Debt (Uncollected Bill) Expense	Est. Annual \$ Economic Impact	Est. # Community Jobs Impact
Baptist Medical Ctr Nassau	327.2	\$6,424,098	\$9,247,747	\$21,814,242	386.1
FL Rural Hosp. (28)	5,876.5	\$98,756,537	\$210,489,971	\$370,577,440	6,934.3

Source: Florida Agency for Health Care Administration

### District 4 State Rural Health & Health Council Contracts & Grant Funding (FY 2014-15):

FL Association of Rural EMS Providers, rural EMS leadership training	\$10,000
Rural Health Network contracts & grants (St. Johns River RHN)	\$63,555
Local Health Council contract (Health Planning Council of Northeast Florida)	<u>\$90,909</u>
<b>TOTAL SENATE DISTRICT 4 FUNDING PROVIDED</b>	<b>\$164,464</b>