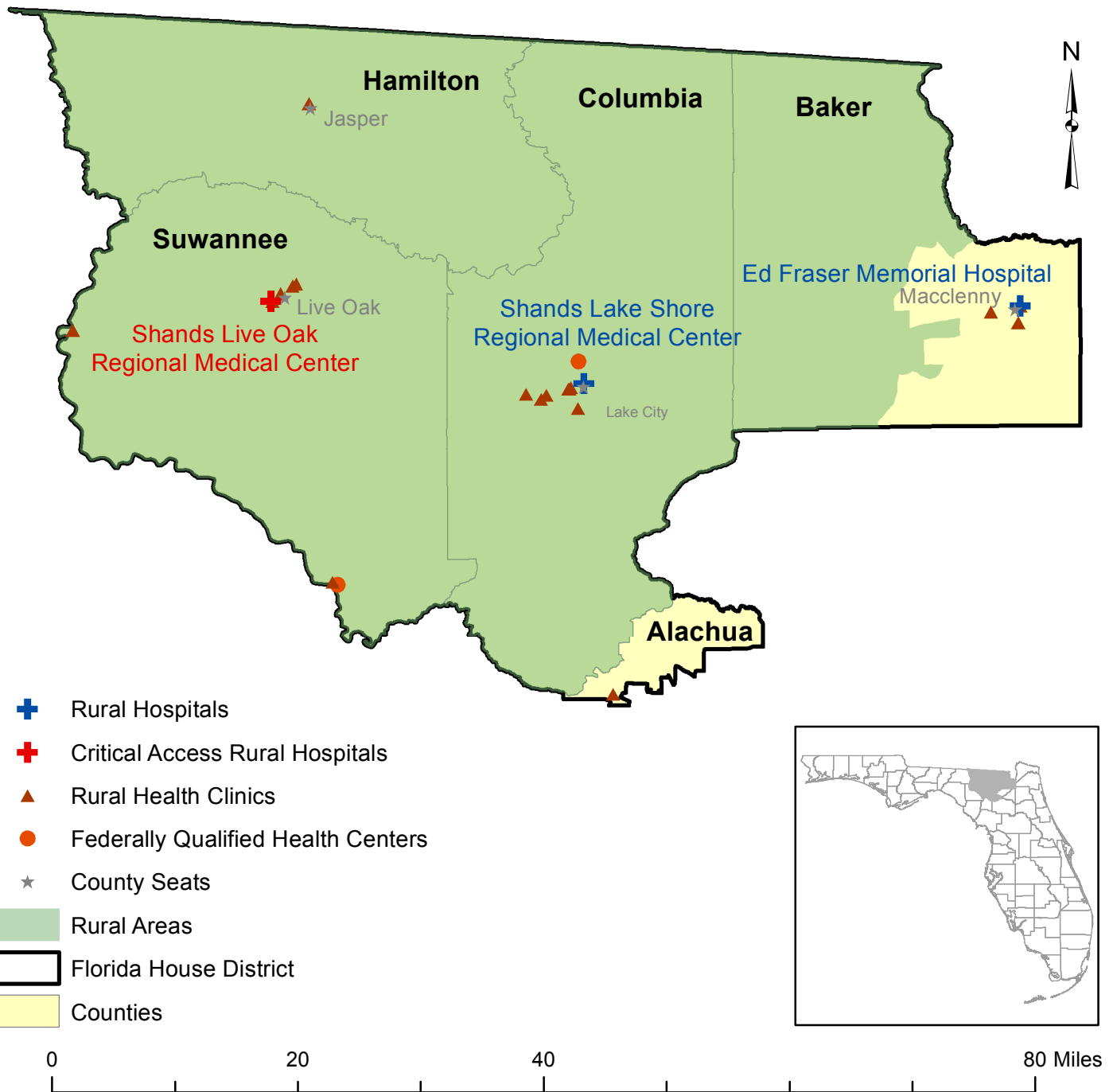


# Florida House District 10

Representative Elizabeth W. Porter  
Baker, Columbia, Hamilton, Suwannee  
and Portions of Alachua Counties



Rural Areas are defined by the Office of Rural Health Policy (ORHP)/

Health Resources and Services Administration/US Department of Health and Human Services, in the document entitled:

"List of Rural Counties And Designated Eligible Census Tracts in Metropolitan Counties".

Sources: Florida Department of Health Office of Rural Health, U. S. Census, U.S Department of Agriculture, HRSA Office of Rural Health Policy  
Data processing and cartography: FSU College of Medicine, Florida Department of Health Office of Rural Health, January 2015

## FLORIDA HOUSE DISTRICT 10

### FLORIDA'S RURAL HEALTH STATUS, HEALTH ACCESS, & QUALITY:

- Florida's age adjusted death rate for residents of rural counties exceeded those of urban residents for 20 of the 25 leading causes of death for the period 2011 through 2013;
- Florida's non-white rural infant mortality rate was over twice the urban and rural rates for whites.
- Florida had the second highest percentage of uninsured, non-elderly persons (24.2%) in the U.S. in 2013; the percentage of uninsured in Florida's rural counties was 34.4% in 2011.
- The percentage of Florida's uninsured children under 18 increased to 11.1% and was the 5th highest in the nation in 2013;
- Florida received a low average rating compared to other states on achievement of healthcare quality benchmarks for the 2013 National Healthcare Quality Report;
- Florida ranked 43rd among states and the District of Columbia on the Commonwealth Fund Scorecard on State Health System Performance for Low-Income Populations in 2013.

### UNINSURED & ACA MEDICAID ELIGIBILITY BY COUNTY (2011):

	Est. # Uninsured	Est. # Eligible for ACA Medicaid Expansion
House District 10	29,194	6,912
Rural Counties (30)	176,687	41,741
Florida	3,853,386	910,324

### PRIMARY CARE PHYSICIAN NEEDS 2014: As determined by federal HPSA criteria

HPSA: Health Professional Shortage Area; MUA: Medically Underserved Area; MUP: Medically Underserved Population

	# Primary Care HPSAs Designated	# MUAs Designated	# MUPs Designated
House District 10	16	4	0
Rural Counties (30)	82	17	14
Florida	254	36	91

### •Primary Care (PC) Locations 2014: (excludes dental, vision, & behavioral health sites)

	Federally Qualified Health Center (FQHC) PC Sites	Rural Health Clinics
House District 10	3	14
Florida	274	153

### RURAL HOSPITALS:

"Rural hospital" means an acute care hospital with 100 or fewer beds and an emergency room.

"Critical Access Hospital (CAH)" means a small rural hospital with 25 or less beds that provides limited inpatient and outpatient services to residents of rural areas.

# of Rural Hospitals in Florida: 29;

# of Rural Hospitals in District 10: 3

# of Critical Access Hospitals in Florida: 13;

# Critical Access Hospitals in District 10: 1

Ed Fraser Memorial Hospital: Maclenny, FL	Shands Lake Shore Regional Medical Ctr: Lake City, FL
Shands Live Oak Regional Medical Center: Live Oak, FL (CAH)	

### •Rural Hospital Impact on the Local Economy (2013): Source: Florida Agency for Health Care Administration

Rural Hospitals	# Hospital Employees (FTEs)	Uncompensated /Charity Care \$ Provided	\$ Bad Debt (Uncollected Bill) Expense	Est. Annual \$ Economic Impact	Est. # Community Jobs Impact
House District 10 (3)	575.1	\$12,312,206	\$24,401,412	\$36,984,941	678.6
FL Rural Hospitals (28)	5,876.5	\$98,756,537	\$210,489,971	\$370,577,440	6,934.3

### District 10 State Rural Health & Health Council Contracts & Grant Funding (FY 2014-2015):

Rural Health Network contract & grant: Rural Health Partnership N Central FL	\$78,555
LHC contract: WellFlorida Council	\$90,909
Patient & Medication Safety Program (1 critical access hospital)	\$10,811
Small Hospital Improvement Program grants (1 rural hospitals)	\$9,000
FL Association of Rural EMS Providers, rural EMS leadership training	\$18,000
<b>TOTAL HOUSE DISTRICT 10 FUNDING PROVIDED</b>	<b>\$207,275</b>

Provided by the Florida Office of Rural Health and the Florida Rural Health Association