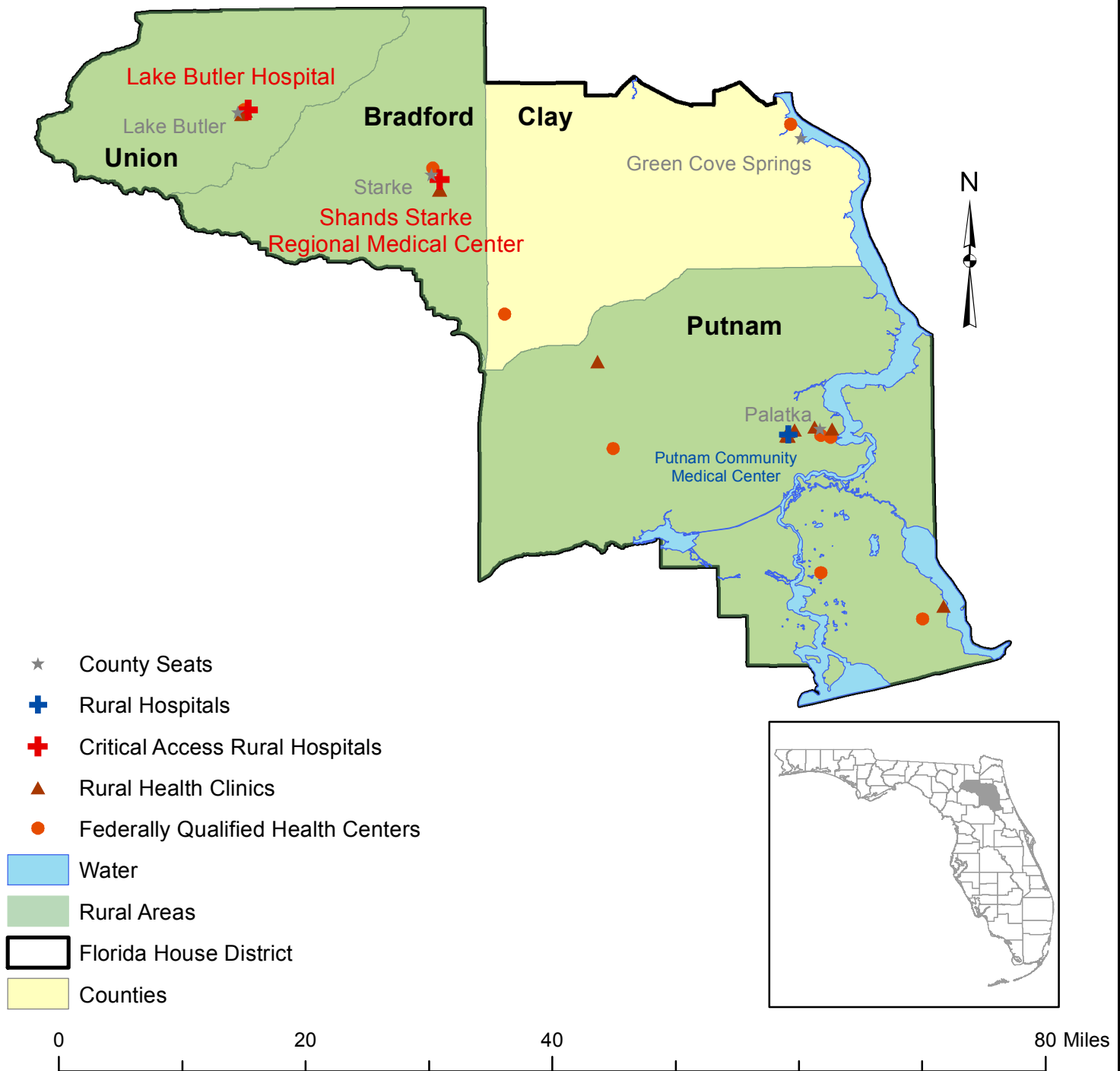


Florida House District 19

Representative Charles E. Van Zant
Bradford, Putnam, Union
and Portions of Clay Counties



Rural Areas are defined by the Office of Rural Health Policy (ORHP)/

Health Resources and Services Administration/US Department of Health and Human Services, in the document entitled:

"List of Rural Counties And Designated Eligible Census Tracts in Metropolitan Counties".

Sources: Florida Department of Health Office of Rural Health, U. S. Census, U.S Department of Agriculture, HRSA Office of Rural Health Policy
Data processing and cartography: FSU College of Medicine, Florida Department of Health Office of Rural Health, January 2015

FLORIDA HOUSE DISTRICT 19

FLORIDA'S RURAL HEALTH STATUS, HEALTH ACCESS, & QUALITY:

- Florida's age adjusted death rate for residents of rural counties exceeded those of urban residents for 20 of the 25 leading causes of death for the period 2011 through 2013;
- Florida's non-white rural infant mortality rate was over twice the urban and rural rates for whites.
- Florida had the second highest percentage of uninsured, non-elderly persons (24.2%) in the U.S. in 2013; the percentage of uninsured in Florida's rural counties was 34.4% in 2011.
- The percentage of Florida's uninsured children under 18 increased to 11.1% and was the 5th highest in the nation in 2013;
- Florida received a low average rating compared to other states on achievement of healthcare quality benchmarks for the 2013 National Healthcare Quality Report;
- Florida ranked 43rd among states and the District of Columbia on the Commonwealth Fund Scorecard on State Health System Performance for Low-Income Populations in 2013.

UNINSURED & ACA MEDICAID ELIGIBILITY BY COUNTY (2011):

	Est. # Uninsured	Est. # Eligible for ACA Medicaid Expansion
House District 19	26,850	6,347
Rural Counties (30)	176,687	41,741
Florida	3,853,386	910,324

PRIMARY CARE PHYSICIAN NEEDS 2014: As determined by federal HPSA criteria

HPSA: Health Professional Shortage Area; MUA: Medically Underserved Area; MUP: Medically Underserved Population

	# Primary Care HPSAs Designated	# MUAs Designated	# MUPs Designated
House District 19	10	4	0
Rural Counties (30)	82	17	14
Florida	254	36	91

Primary Care (PC) Locations 2014: (excludes dental, vision, & behavioral health sites)

	Federally Qualified Health Center (FQHC) PC Sites	Rural Health Clinics
House District 19	9	14
Florida	274	153

RURAL HOSPITALS:

"Rural hospital" means an acute care hospital with 100 or fewer beds and an emergency room.

"Critical Access Hospital (CAH)" means a small rural hospital with 25 or less beds that provides limited inpatient and outpatient services to residents of rural areas.

of Rural Hospitals in Florida: 29;

of Rural Hospitals in District 19: 3

of Critical Access Hospitals in Florida: 13;

Critical Access Hospitals in District 19: 2

Lake Butler Hospital: Lake Butler, FL (CAH)	Putnam Community Medical Center: Palatka, FL
Shands Starke Regional Medical Center: Starke, FL (CAH)	

Rural Hospital Impact on the Local Economy (2013): Source: Florida Agency for Health Care Administration

Rural Hospitals	# Hospital Employees (FTEs)	Uncompensated /Charity Care \$ Provided	\$ Bad Debt (Uncollected Bill) Expense	Est. Annual \$ Economic Impact	Est. # Community Jobs Impact
House District 19 (3)	682.0	\$11,071,974	\$30,063,656	\$44,526,786	804.8
FL Rural Hospitals (28)	5,876.5	\$98,756,537	\$210,489,971	\$370,577,440	6,934.3

District 19 State Rural Health & Health Council Contracts & Grant Funding (FY 2014-2015):

Rural Health Network contracts (2): St. Johns River, Rural Health Partnership	\$142,110
LHC contracts (2): Health Council NE FL, WellFlorida Council	\$181,818
Patient & Medication Safety Program (2 critical access hospitals)	\$21,622
Small Hospital Improvement Program grants (2 rural hospitals)	\$18,000
FL Association of Rural EMS Providers, EMS scholarships & leadership training	\$20,000
TOTAL HOUSE DISTRICT 19 FUNDING PROVIDED	\$383,550

Provided by the Florida Office of Rural Health and the Florida Rural Health Association