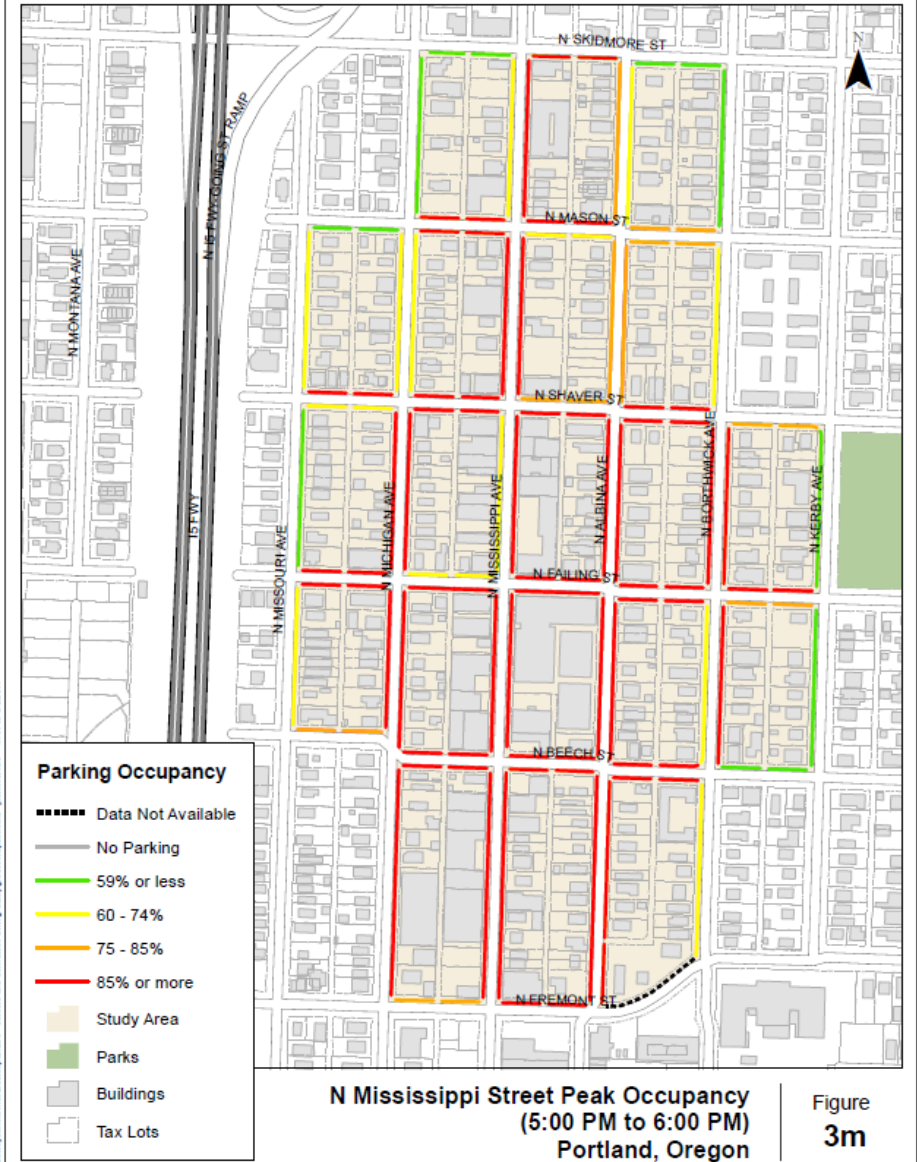
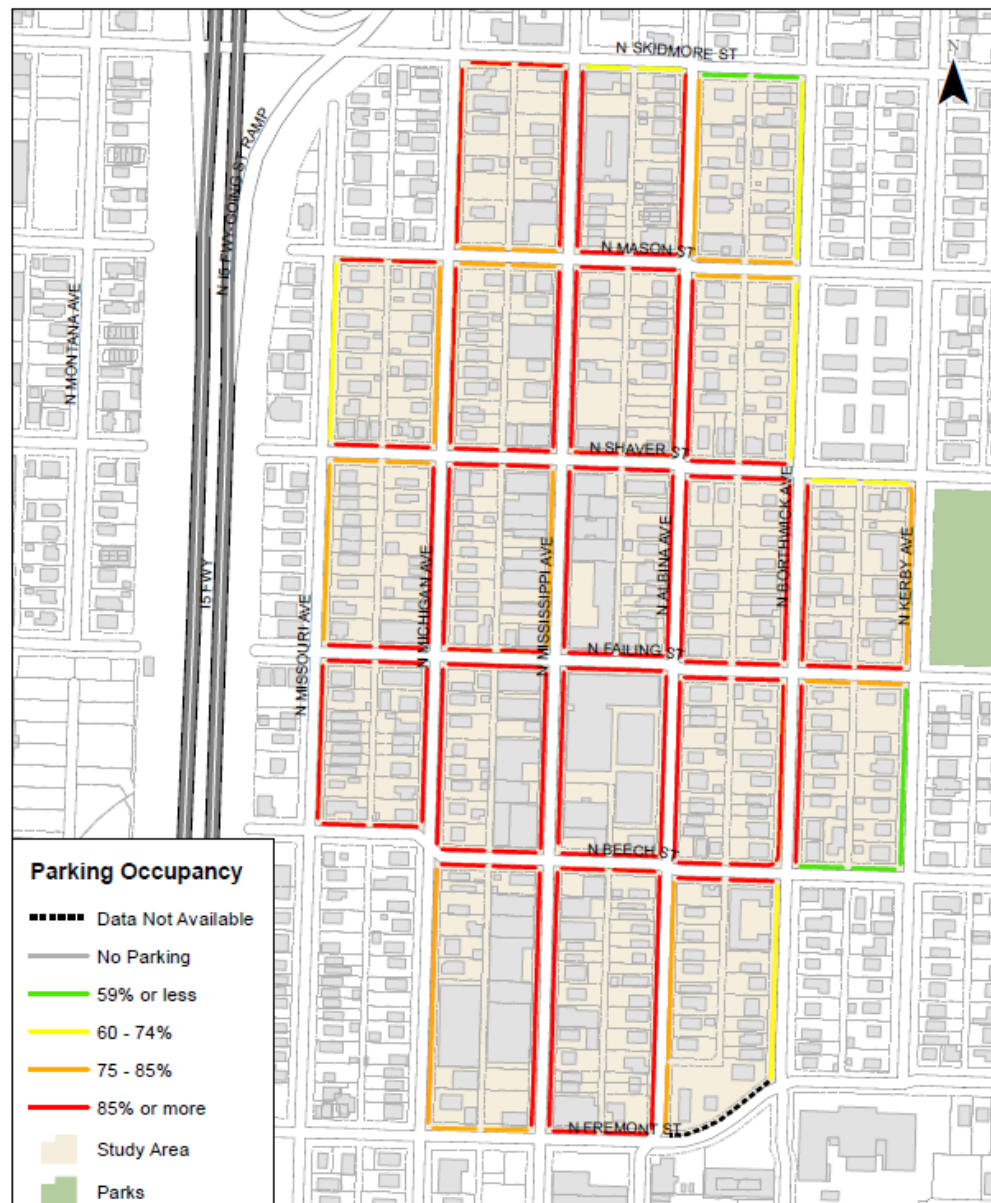


Boise



C:\Users\jgarcia\Documents\20170913_Corridors and Centers Parking Study\GIS\Map_Series\jgarcia_44101.mxd 9/20/17



Parking Occupancy

- Data Not Available
- No Parking
- 59% or less
- 60 - 74%
- 75 - 85%
- 85% or more
- Study Area
- Parks
- Buildings
- Tax Lots

**N Mississippi Street Peak Occupancy
(6:00 PM to 7:00 PM)
Portland, Oregon**

**Figure
3n**

C:\Users\james\OneDrive\Documents\Projects\2017\20170913 - Center and Corridor Parking Study\GIS\Map\map_3n.mxd - 4/17/17 3:52:07 PM

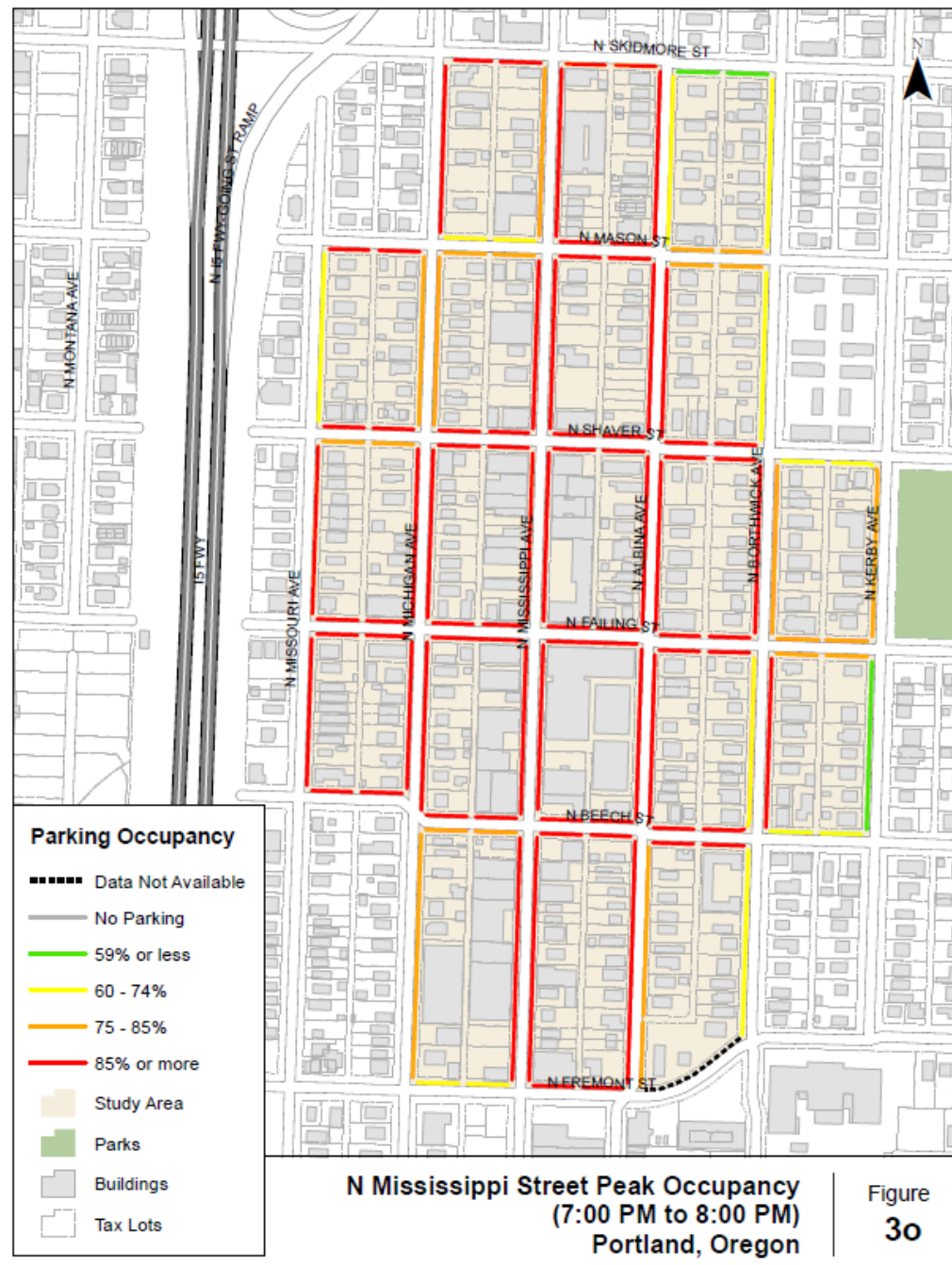


Figure 30

C:\Users\jamme\OneDrive\Documents\212335 - Centers and Corridors Parking Study\GIS\Info\workspace.mxd - jamme\esri - 4/17/17 3:52:07 PM