

## What kind of water system do I have?

*This question is a point of confusion for many water board members. The answer to this question can have costly **or** cost saving implications.*

*Having a Mutual Water Company is not a type of water system, rather it describes the legal cooperation between homeowners to cooperatively own/maintain their water system. These type of legal classifications do not have a bearing on the amount and type of regulation that a water system is subject to. California State & Counties utilize a completely different set of parameters to determine the type of water system and if they have regulatory jurisdiction over that water system.*

*It is helpful to define a few terms that will help you determine what type of water system you have.*

**Connection**-Number of houses or properties connected to the water system.

**Community**- 15 individual connections to the water system OR 25 people that use the water from the water system

**Non-Community**- fewer than 15 connections and fewer than 25 people that use the water from the water system

**Transient**-The population that utilizes the water from the water system is in a constant state of turnover like a hotel, gas station or restaurant

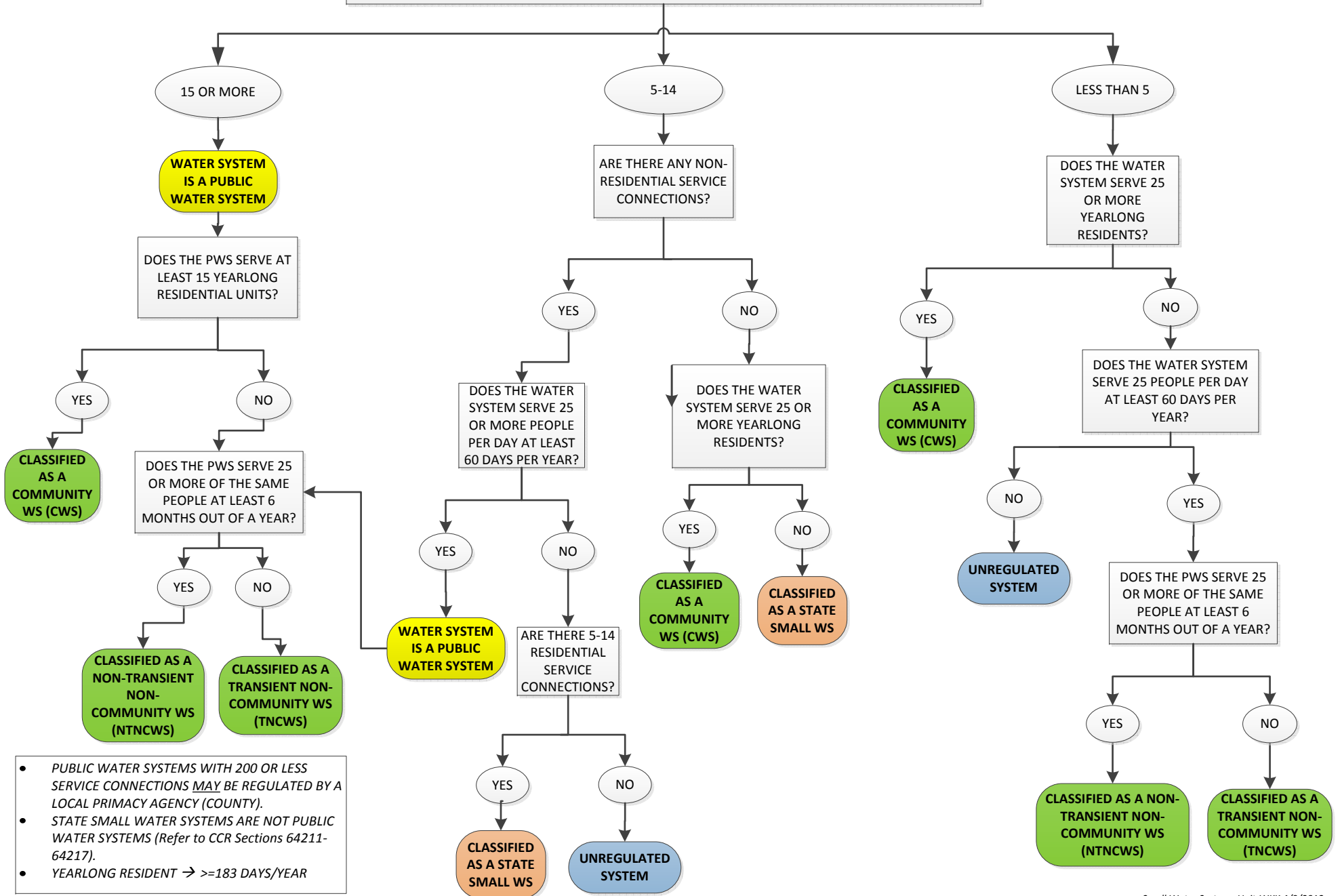
**Non-Transient**-The population that utilizes the water from the water system is constant.

*As you look at the decision tree below, you'll be able to discern the strategy for determining the type of water system comes from the public health perspective of how many people are impacted by the water and if the exposure to a water source is repeated, long or short term.*

*Water systems that serve non-transient & large community populations are subject to more stringent regulation and water testing requirements than water systems that serve transient or small populations. Please contact one of our water system operations staff if you would like additional information or have a question.*

# DECISION TREE FOR CLASSIFICATION OF WATER SYSTEMS

HOW MANY SERVICE CONNECTIONS DOES THE WATER SYSTEM HAVE?



- PUBLIC WATER SYSTEMS WITH 200 OR LESS SERVICE CONNECTIONS MAY BE REGULATED BY A LOCAL PRIMACY AGENCY (COUNTY).
- STATE SMALL WATER SYSTEMS ARE NOT PUBLIC WATER SYSTEMS (Refer to CCR Sections 64211-64217).
- YEARLONG RESIDENT → ≥183 DAYS/YEAR