

WALDORF-ASTORIA

Anthony T. Marasco
(b.1986-)

Acoustic Guitar

Electric Guitar

Elec. Guitar Loops

Record Player
*Start record player, keep volume EXTREMELY LOW so that it cannot be heard.

Additional items

Mellotron/Optigan

Tenor Vocals
I know - you be-long - to
A 6 A 7

Ukulele

Computer
*Cue 1 happens after record player has been started.
"Tonight You Belong to Me"

Waldorf-Astoria

Ac.Gtr.

E.Gtr.

El.Gtr. Loop

Add. items

Mell./Opt.

Ten.

Uke.

Cmp.

Ac.Gtr.

E.Gtr.

El.Gtr. Loop

Add. items

Mell./Opt.

Ten.

Uke.

Cmp.

8

Al - though - we're a - part - - you're part - - - of my heart - - - but to-

E7 A6 A7 D d6

Waldorf-Astoria

Ac.Gtr.

E.Gtr.

El.Gtr. Loop

Add. items

Mell./Opt.

Ten.

Uke.

Cmp.

Ac.Gtr.

E.Gtr.

With E-bow

Niente

El.Gtr. Loop

Add. items

Mell./Opt.

Ten.

8 sea - How very - very - sweet - it will seem - once more just to dream - in - the


Uke.

d d d A6 F#7

Cmp.


Waldorf-Astoria

Ac.Gtr.




E.Gtr.

mp




El.Gtr. Loop




Add. items



Mell./Opt.



Ten.



8
sil-very - moon-light My Honey - I - know - with the dawn - - that you - - - will be

Uke.



B E7 A6 A7 D

Cmp.



Ac.Gtr. 

E.Gtr. 
mf

El.Gtr. Loop 

Add. items 

Mell./Opt. 

Ten. 
gone - - but to - night - you be - long - to - me just a little - old me

Uke. 
d E7 A6

Cmp. 
"grand finale" flourish into next section

Waldorf-Astoria

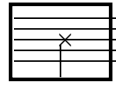
A

Ac.Gtr.



2

*When cued, improvise fret slides. Watch for Uke player's cue into next section!



E.Gtr.



f

El.Gtr. Loop



Add. items



Mell. /Opt.



Ten.



1

*After First time, cue Ac. Guitar.

After Third time, cue to move to next section! - - ->

Uke.

D4 ♩ = 80 B7 B^bM7 A x 3



Cmp.



Waldorf-Astoria

B

♩ = 80

Ac.Gtr.

(Feedback loop continues) ----->

Immediately move towards amp and create Feedback Loop

E.Gtr.

El.Gtr. Loop

Add. items

Mell. /Opt.

Ten.

Uke.

Cmp.

Waldorf-Astoria

Ac.Gtr.



Acoustic guitar part featuring a rhythmic pattern of eighth notes with accents (>) on every other note.

*Gradually fade out Feedback Loop. Move back into playing position before next section

E.Gtr.



Electric guitar part consisting of a dense, sustained feedback loop that gradually fades out towards the end of the section.

El.Gtr. Loop



Empty staff for electric guitar loop.

Add. items



Empty staff for additional items.

Mell. /Opt.



Empty staff for mellotron or optional part.

Ten.



Empty staff for tenor saxophone.

Uke.




Ukulele part with a rhythmic pattern of eighth notes. Chord changes are indicated above the staff: AM7+4, AM7, G, and b.

Cmp.



Solid black bar representing a compressor effect.


Ac.Gtr.



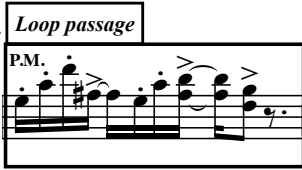
E.Gtr.

Overdrive

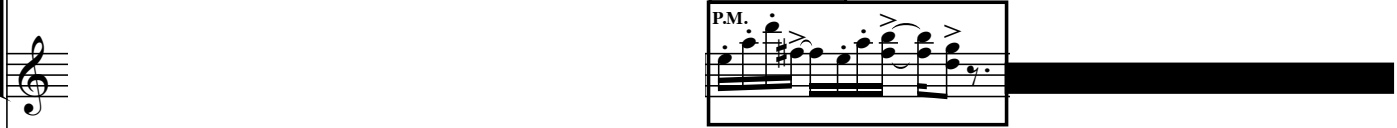
P.M.




Loop passage




El.Gtr. Loop




Add. items




Mell. /Opt.




Ten.



Uke.



Cmp.



Waldorf-Astoria

Ac.Gtr. *f* **1** *Mute strings

E.Gtr. **2** *Play a recognisable jazz standard, ideally am up-beat one. Mellotron player will join you after first few bars.

El.Gtr. Loop

Add. items **3** *Accompany El. Gtr. player's jazz standard. Make sure to end together.

Mell./Opt. To Mellotron Winds/Saxes

Ten.

Uke.

Cmp.

Ac.Gtr. *ff*

E.Gtr.

El.Gtr. Loop

Add. items

Mell. /Opt.

Ten.

Uke.

Cmp.

E^b6 c c7 f D^b6

End Loop

D

Ac.Gtr.



1

Overdrive,
With E-bow

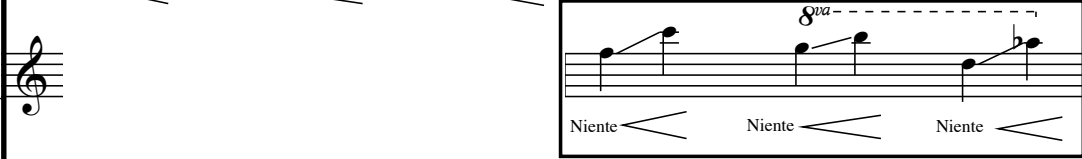
*Perform these three sets of slides, putting a small amount of space between each set. Once you play all three, move to Loop staff.

E.Gtr.



Loop passage, then cue music box

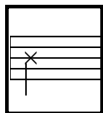
El.Gtr. Loop



Music Box

2

* When cued by Elec.Guitarist, play music box melody one time through



Add. items



Mell. /Opt.



3

* When Elec. Guitarist has looped their passage and music box melody is finished, **Cue next section!**

Ten.



Uke.



Cmp.



Waldorf-Astoria

E

*Mute strings

Ac.Gtr.

f

2

Heavy Fuzz Dist.

*Once "Somewhere" begins to play, join in after 4 measures (playing along with the theme's second statement). Adhere to the recording's tempo and follow allargando. **Cue next section, which begins on the first downbeat following passage!**

(♩. = c. 84)

E.Gtr.

(solo)

El.Gtr. Loop

Add. items

To Optigan Organ

Mell./Opt.

p

Ten.

Uke.

Cmp.

1

"Somewhere Over the Rainbow"

Cue 2

F

Waldorf-Astoria

Ac.Gtr. *f* A c# f# B g#7 f# A c# f# B

Speak the following dialouge into pick-ups
over the designated span of measures.
Mimic a 1930s radio broadcaster

*"The Monster is now in control of the middle-section of New Jersey!"

E.Gtr. *ff* End Loop

El.Gtr. Loop

Add. items

Mell./Opt. *ff*

Ten.

Uke.

Cmp.

Waldorf-Astoria

Go ahead...do some Pete Townshend "whindmill" strums on these last four...

Ac.Gtr. *g#7 f#* *fff*

The acoustic guitar part consists of four measures of music. The first measure has a *g#7 f#* chord above it. The second and fourth measures have *A B* chords above them. The dynamic *fff* is written below the first measure. The notes are quarter notes with stems pointing down.

*"Railroad tracks are torn, routing some of the trains through Allentown and Phoenixville..."

* "...an invading army from the planet Mars!!"

(ord.) ----->

E.Gtr.

The electric guitar part shows two measures of music. Each measure starts with a muted note (indicated by an 'x' over the note head) followed by a thick black bar representing a sustained or muted sound.

El.Gtr. Loop

An empty musical staff for an electric guitar loop.

Add. items

An empty musical staff for additional items.

Mell. /Opt. '60s-style rock organ "chunks"

The Mellotron/Organ part features a melodic line with a '60s-style rock organ "chunks" section highlighted by a box. The music consists of eighth notes and chords.

Ten.

An empty musical staff for a tenor saxophone.

Uke.

An empty musical staff for a ukulele.

Cmp.

An empty musical staff for a drum set.

Waldorf-Astoria

G

Ac.Gtr.

Overdrive

E.Gtr.

P.M.

Loop passage

P.M.

El.Gtr. Loop

Add. items

Mell. /Opt.

Ten.

*With a glass slide, improvise plucked "bell tones", wavering pitch by sliding up or down fingerboard

Uke.

Cmp.

Ac.Gtr.



ff

E.Gtr.



End Loop

El.Gtr. Loop



* Turn record player up close to full volume

Add. items



Mell. /Opt.



Ten.



Uke.



Cmp.



Waldorf-Astoria

Ac.Gtr. E 6 B A 6

ffff

Detailed description: Musical notation for Acoustic Guitar (Ac.Gtr.) in treble clef. The first measure contains a whole note chord E6 with a dynamic marking of *ffff*. The second measure contains a whole note chord B. The third measure contains a whole note chord A6. The staff continues with a whole rest for the next two measures.

E.Gtr. F# D# G

Spring Reverb No fifths *Strum pitch for circa 8 seconds, starting with a fast strum and gradually slowing down.

ffff **ff**

Niente

Detailed description: Musical notation for Electric Guitar (E.Gtr.) in treble clef. The first measure contains a whole note chord F# with a dynamic marking of *ffff*. The second measure contains a whole note chord D#. The third measure contains a whole note chord G. A box highlights the G chord with a dynamic marking of **ff**. A dashed line above the staff indicates 'No fifths' for the D# and G chords. A note above the staff indicates '*Strum pitch for circa 8 seconds, starting with a fast strum and gradually slowing down.' The staff continues with a whole rest for the next two measures. A volume wedge starts at the end of the piece and tapers to 'Niente'.

El.Gtr. Loop

Detailed description: Musical notation for Electric Guitar Loop (El.Gtr. Loop) in treble clef. The staff contains a whole rest for the entire duration of the piece.

* Allow symphony to play for 10 seconds after ensemble finishes, then gradually turn down volume and turn record player off.

Add. items

Niente

Detailed description: Musical notation for Additional Items (Add. items). The staff contains a whole rest for the entire duration of the piece. A volume wedge starts at the end of the piece and tapers to 'Niente'.

Mell. /Opt.

Detailed description: Musical notation for Mellotron / Optional (Mell. /Opt.) in treble clef. The staff contains a whole rest for the entire duration of the piece.

Ten.

8

Detailed description: Musical notation for Tenor Saxophone (Ten.) in treble clef. The staff contains a whole rest for the entire duration of the piece. The number '8' is written below the staff.

Uke. D 4 D 6 AM7+4

ffff

Detailed description: Musical notation for Ukulele (Uke.) in treble clef. The first measure contains a whole note chord D4 with a dynamic marking of *ffff*. The second measure contains a whole note chord D6. The third measure contains a whole note chord AM7+4. The staff continues with a whole rest for the next two measures.

Cmp.

Detailed description: Musical notation for Comps (Cmp.) in treble clef. The staff contains a whole rest for the entire duration of the piece.