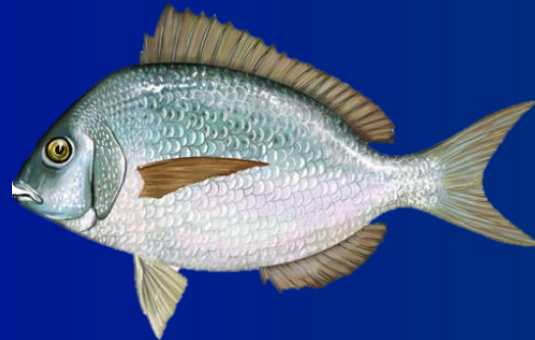




2018 Scup Recreational Measures



Council and Board Meeting

December 12, 2017

Annapolis, MD

Meeting Objective

- Recommend federal measures to constrain harvest to 7.37 million lb RHL
- Continue regional approach in state waters? (Board)
 - If not, coast-wide measures



Process

Aug 8

Council/Board Meeting (RHL)



Nov 13-14

Monitoring Committee Meeting



Nov 20

Advisory Panel Meeting



Today

Council/Board Meeting



Feb 6-8

Board Meeting

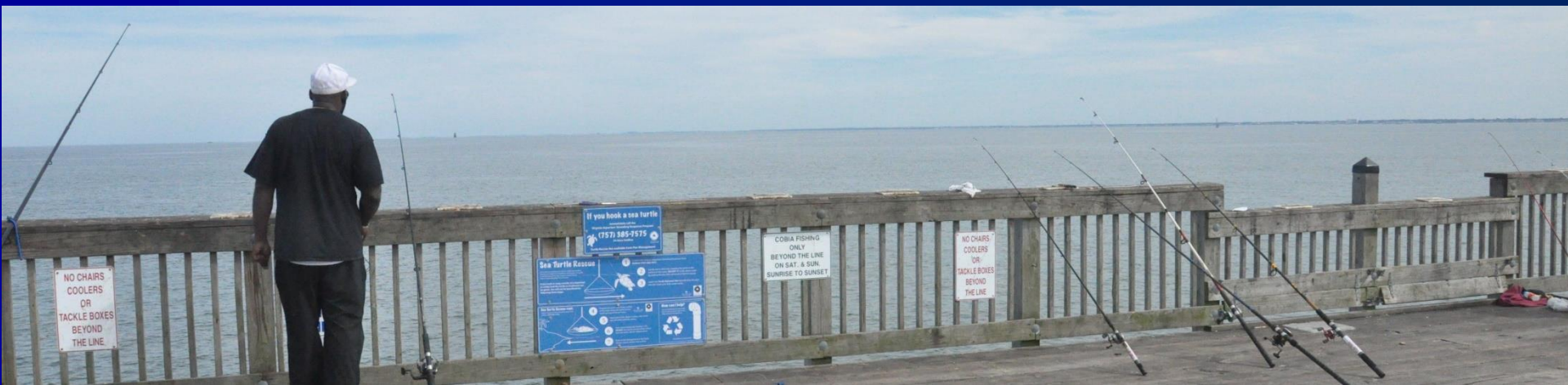
2015-2017 Federal Regulations

- 9-inch TL minimum size
- 50 fish possession limit
- January 1- December 31



State Regulations

- Regional approach since 2003
 - Target of 97% of RHL for MA-NY
- No change in state regulations, 2015-2017



State	Size	Bag	Season
MA (private and shore)	10"	30	May-Dec
MA (party/charter)	10"	45	May-Jun
		30	July-Dec
RI (private and shore)	10"	30	May-Dec
RI Shore Program (7 sites)	9"	30	May-Dec
RI (party/charter)	10"	30	May-Aug; Nov-Dec
		45	Sept-Oct
CT (private angler)	10"	30	May-Dec
CT (45 shore sites)	9"		
CT (party/charter)	10"	30	May-Aug; Nov-Dec
		45	Sept-Oct
NY (private and shore)	10"	30	May-Dec
NY (party/charter)	10"	30	May-Aug; Nov-Dec
		45	Sept-Oct
NJ	9"	50	Jan-Feb; July-Dec
DE, MD, VA, NC	8"	50	All Year

Projection Methodology

- **MA, RI, CT, NY, NJ, NC**

- 2017 wave 1-4 landings
- 2015-2016 proportion of landings by wave
- Standard projection methodology, but with 2 years

- **DE, MD, VA**

- Average landings, 2015-2016

- **NH**

- 2017 wave 1-4 landings
- Assumes no wave 5-6 landings

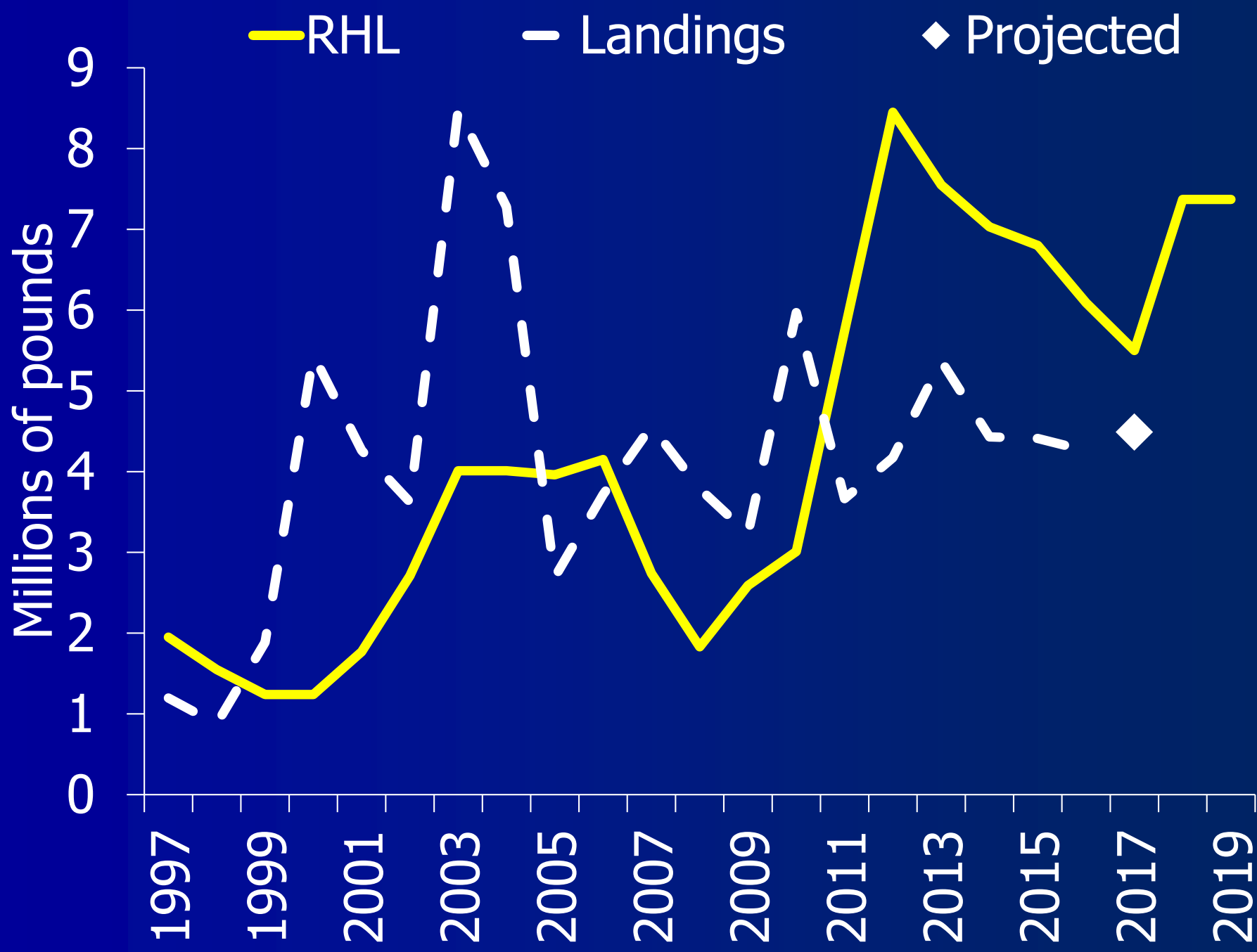


2017 Projections

2017 RHL	5.50 mil lb
2017 landings through wave 4	2.65 mil lb
2017 Projected Landings	4.49 mil lb
2017 overage/underage	-18%

2017 Projections by State

State	2015-2016 Wave 1-4 Landings as % of Annual Landings	2017 Wave 1-4 Landings (pounds)	Average 2015-2016 landings (pounds)	2017 Projected Annual Landings (pounds)	% of Projected 2017 Total Landings
ME	N/A	0	0	0	0.00%
NH	N/A	1,458	0	1,458	0.03%
MA	88.81%	618,675	1,168,843	696,611	15.52%
RI	90.76%	330,072	599,112	363,682	8.10%
CT	52.05%	784,014	660,628	1,506,184	33.55%
NY	55.07%	833,097	1,777,068	1,512,666	33.70%
NJ	19.39%	77,424	120,114	399,376	8.90%
DE	0.00%	16	295	295	0.01%
MD	0.00%	0	166	166	0.00%
VA	88.51%	0	8,002	8,002	0.18%
NC	95.45%	373	88	391	0.01%
Total		2,645,129		4,488,829	



2018 RHL	7.37 mil lb
2017 Projected Landings	4.49 mil lb
Difference	-39%

Staff Recommendation

- *Status quo* federal measures
 - 9-inches TL
 - 50 fish
 - Year-round season



Monitoring Committee

- *Status quo* federal measures
- Continuation of regional approach in state waters
- Further analyze length frequencies if states want to reduce minimum sizes to match Federal minimum size (9")

AP Comments

- Support for decrease in state waters size limit from 10" to 9"
- Support for increase in state bag limits
- High biomass, should liberalize and increase fishing opportunities
- Discards should be reduced
- Should focus on "achieving" RHL rather than "constraining" harvest to RHL

Decision Points

■ Council and Board:

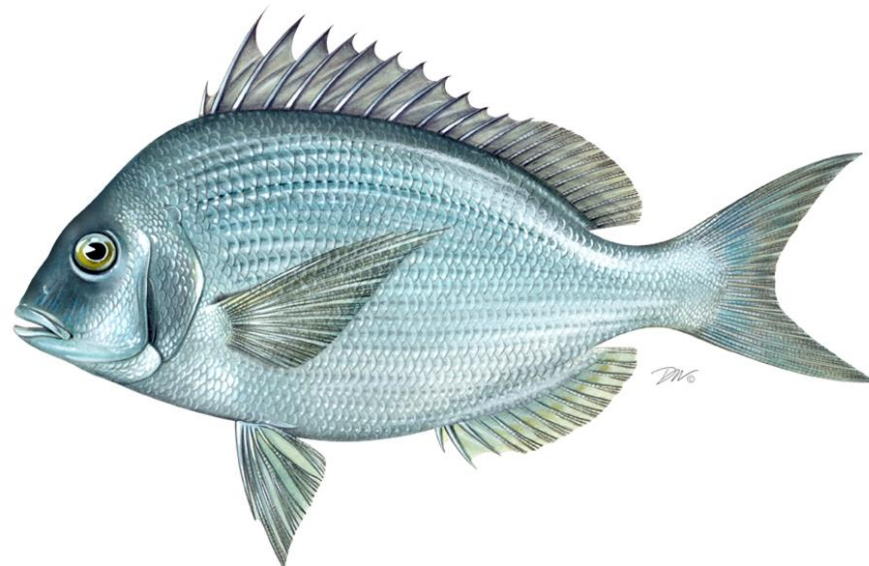
- Federal 2018 recreational measures

■ Board:

- Continue regional approach in state waters?



2018 Scup Recreational Management



Joint ASMFC/MAFMC Meeting

December 12, 2017

Scup Rec Management



- Addenda VII and IX (2002-2003)
 - Established specific management program for northern region states in state waters
 - Massachusetts-New York have state specific measures
 - Board established measures for New Jersey- North Carolina due to data issues
- Addenda XI (2004-present)
 - Continued regional approach of Addenda VII & IX
 - Most measures have remained status quo since 2013
 - CT decreased size limit in 2015 to 10”
 - Measures can be adjusted to achieve the RHL

Decisions today

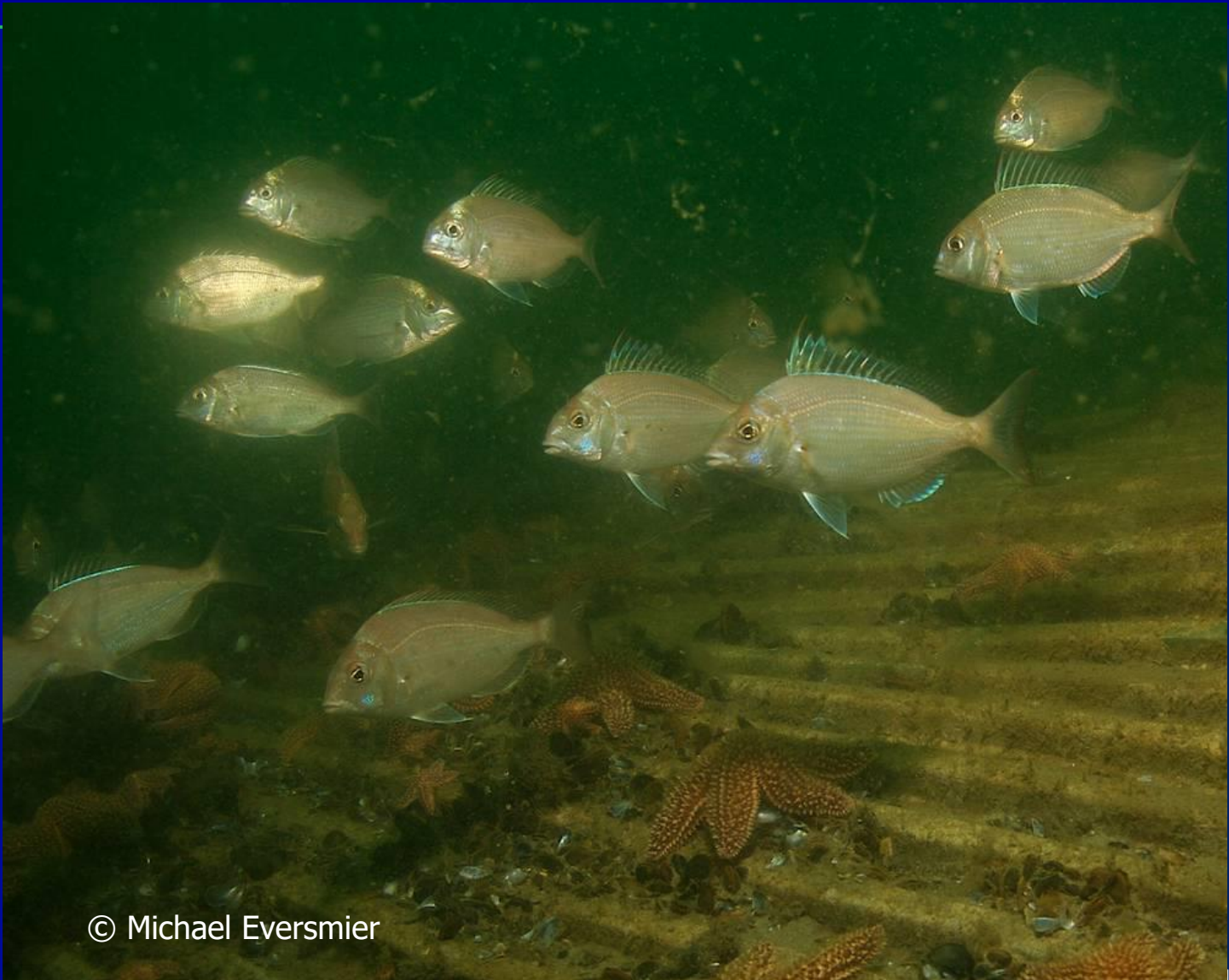


- Specify 2018 federal waters measures (**joint motion required**)
- Whether to continue the regional approach in state waters (**Board motion required**)
- Whether to task the Technical Committee with completing analysis on changes to current management measures to achieve RHL (e.g. 1 inch size limit change)
- NOTE: State waters measures can be set at ASMFC Winter Meeting



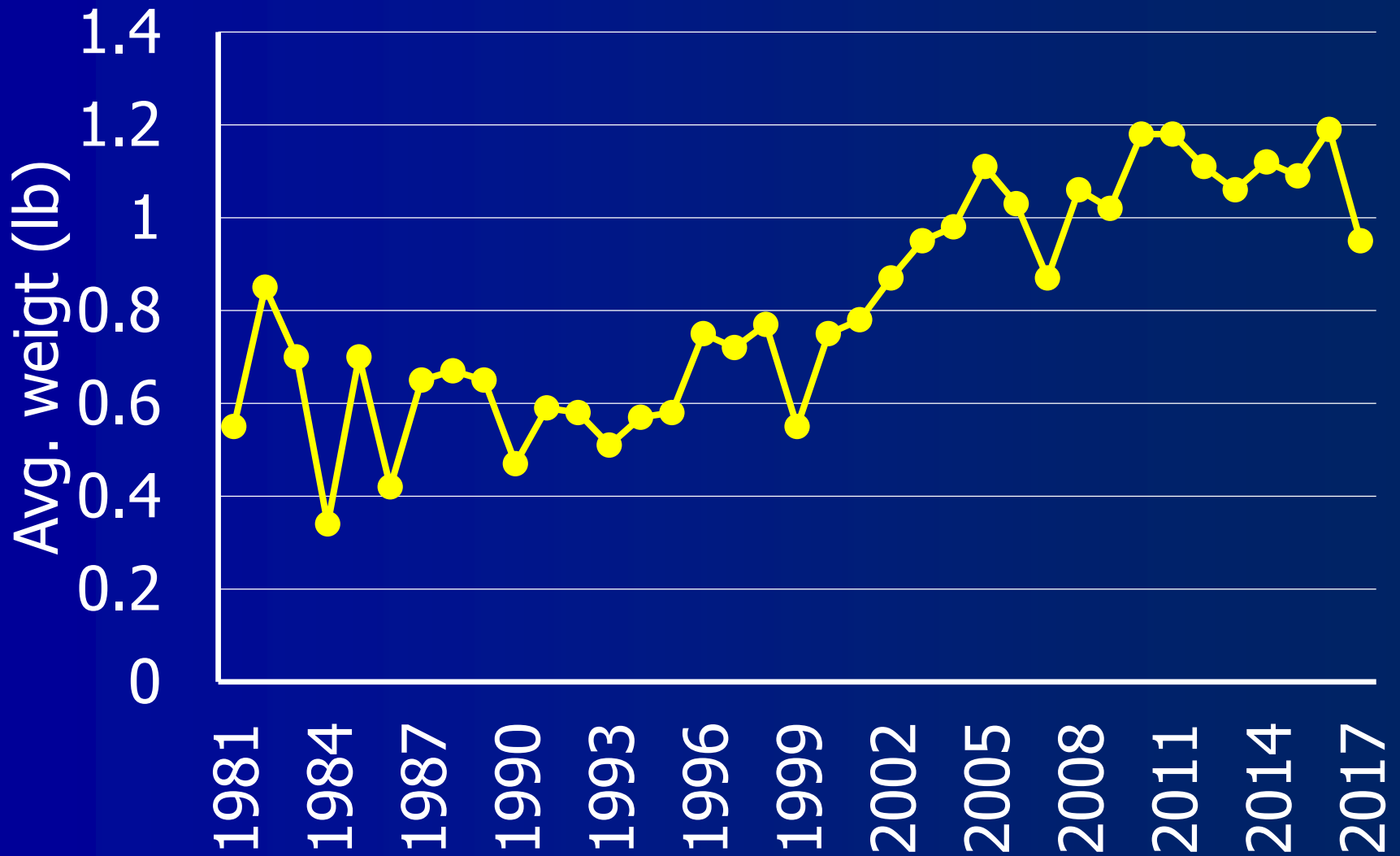
Questions

Questions/Discussion

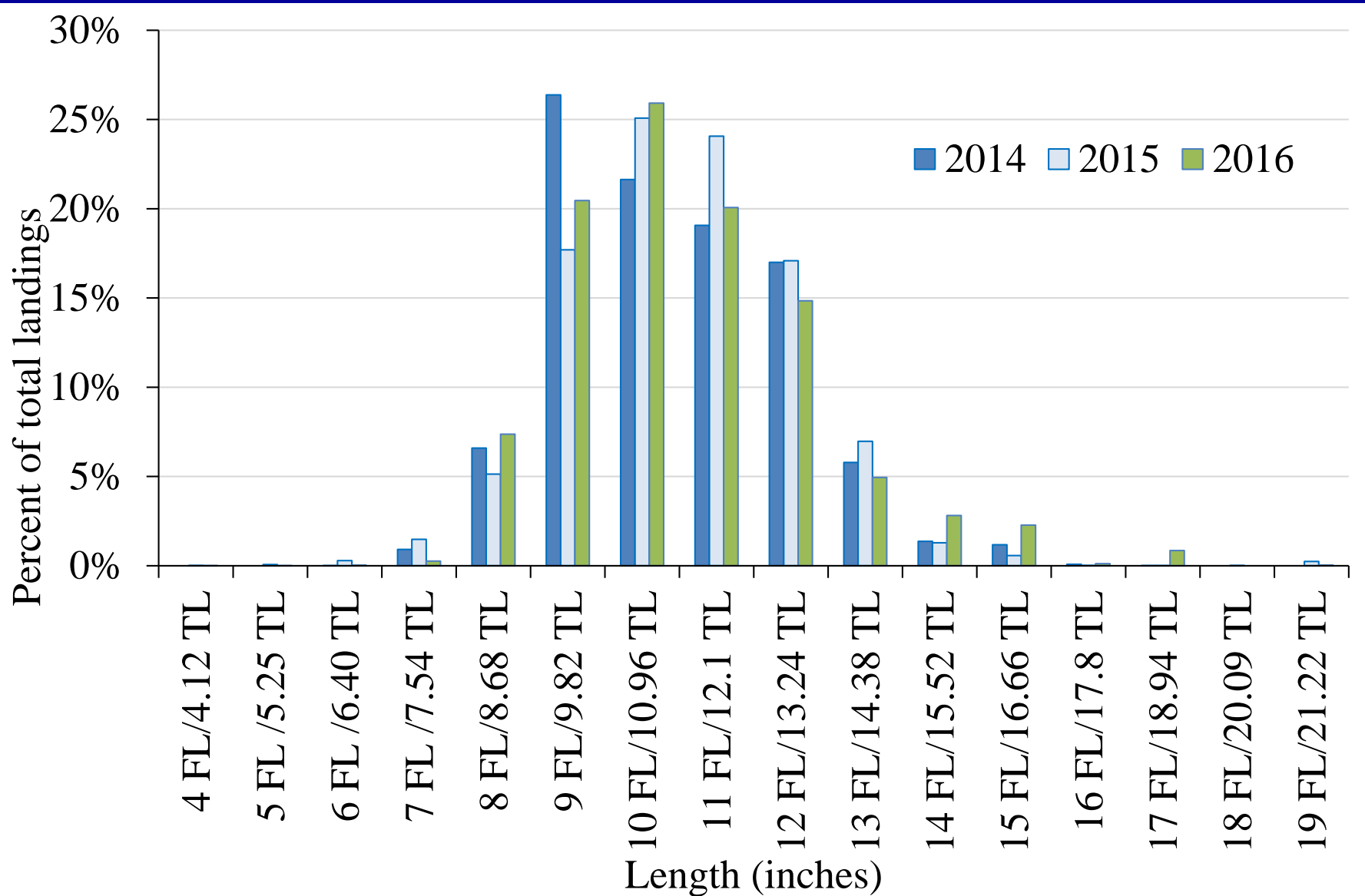


© Michael Eversmier

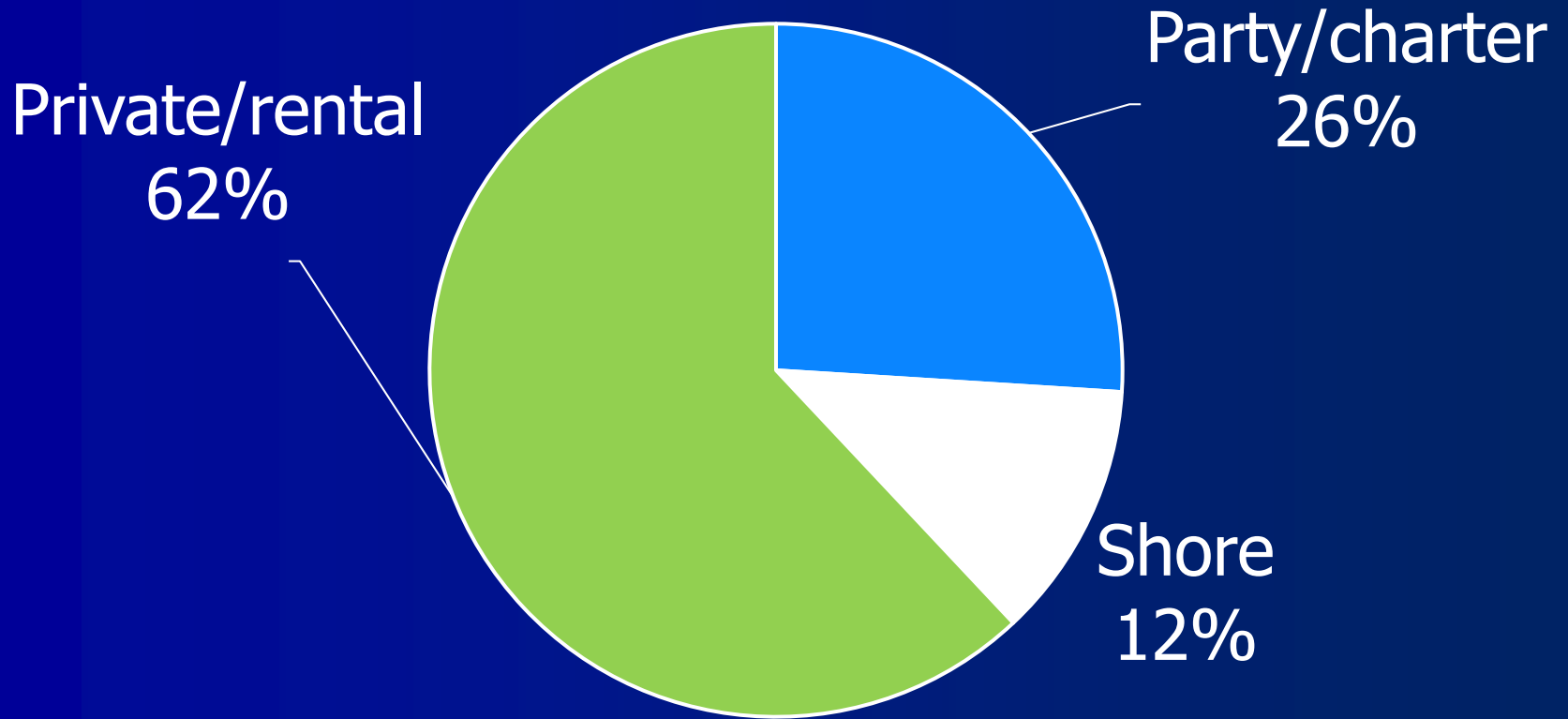
Mean Weight of Landed Scup



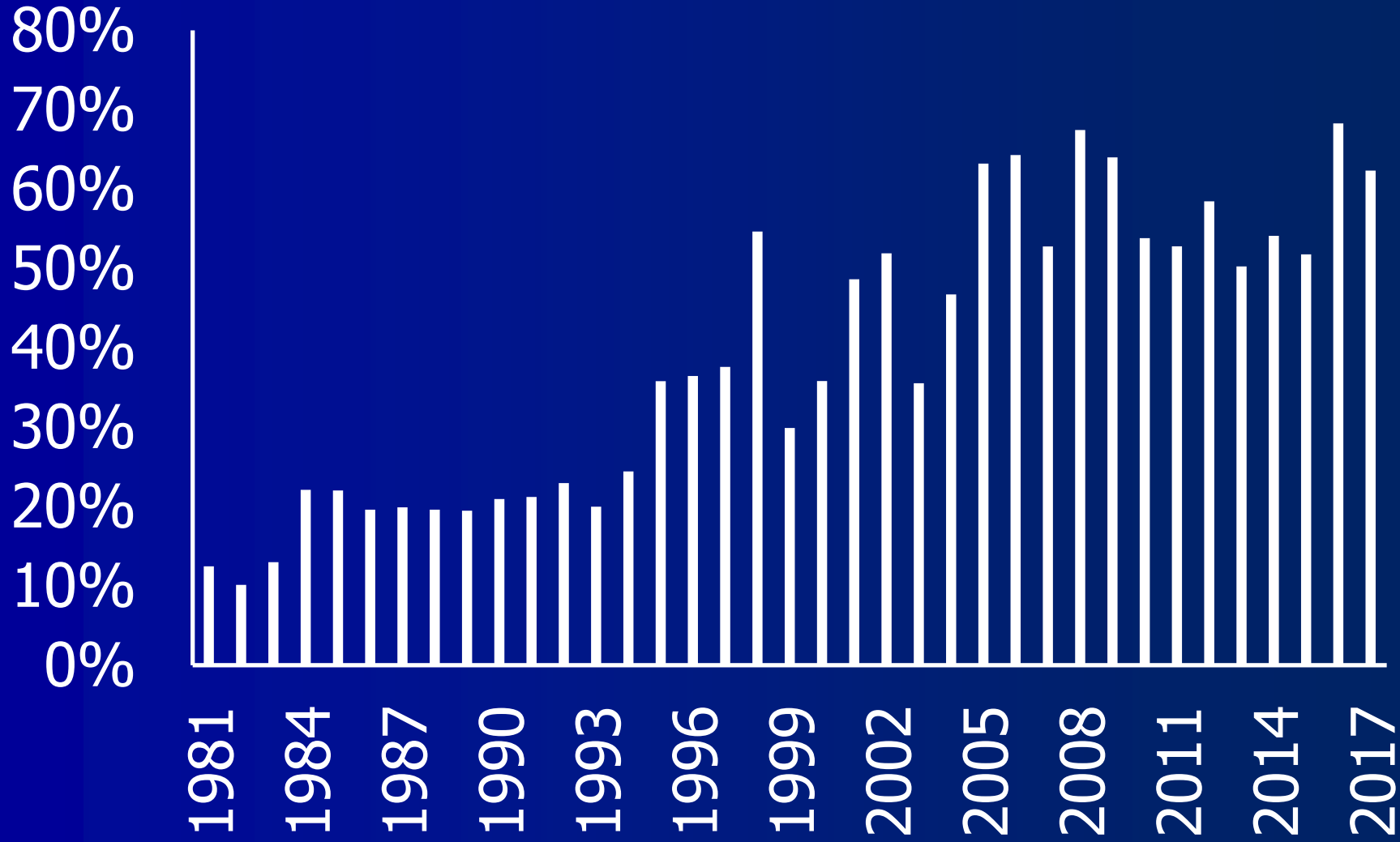
Length Frequencies



Harvest By Mode, 2012-2016



Discards



State Targets and Projected Landings

State	2017 Target	2017 Projected Landings
NH	None	1,201
MA	4,483,193 ^b	643,217
RI		443,972
CT		1,446,755
NY		1,741,399
MA-NY total		4,275,342
NJ	None	770,654
DE	None	247
MD	None	235
VA	None	10,263
NC	None	263
Total		5,058,204