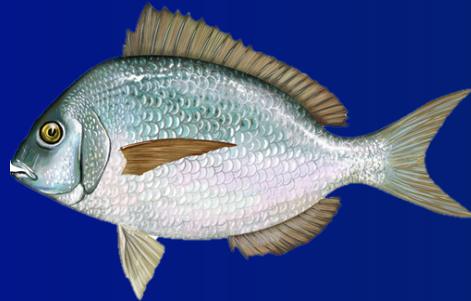




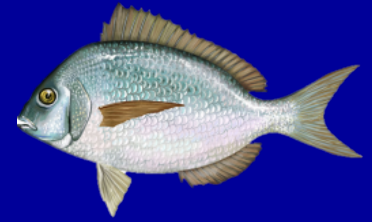
Scup

2021 Specifications Review



Council and Board Meeting
August 11, 2020

Outline



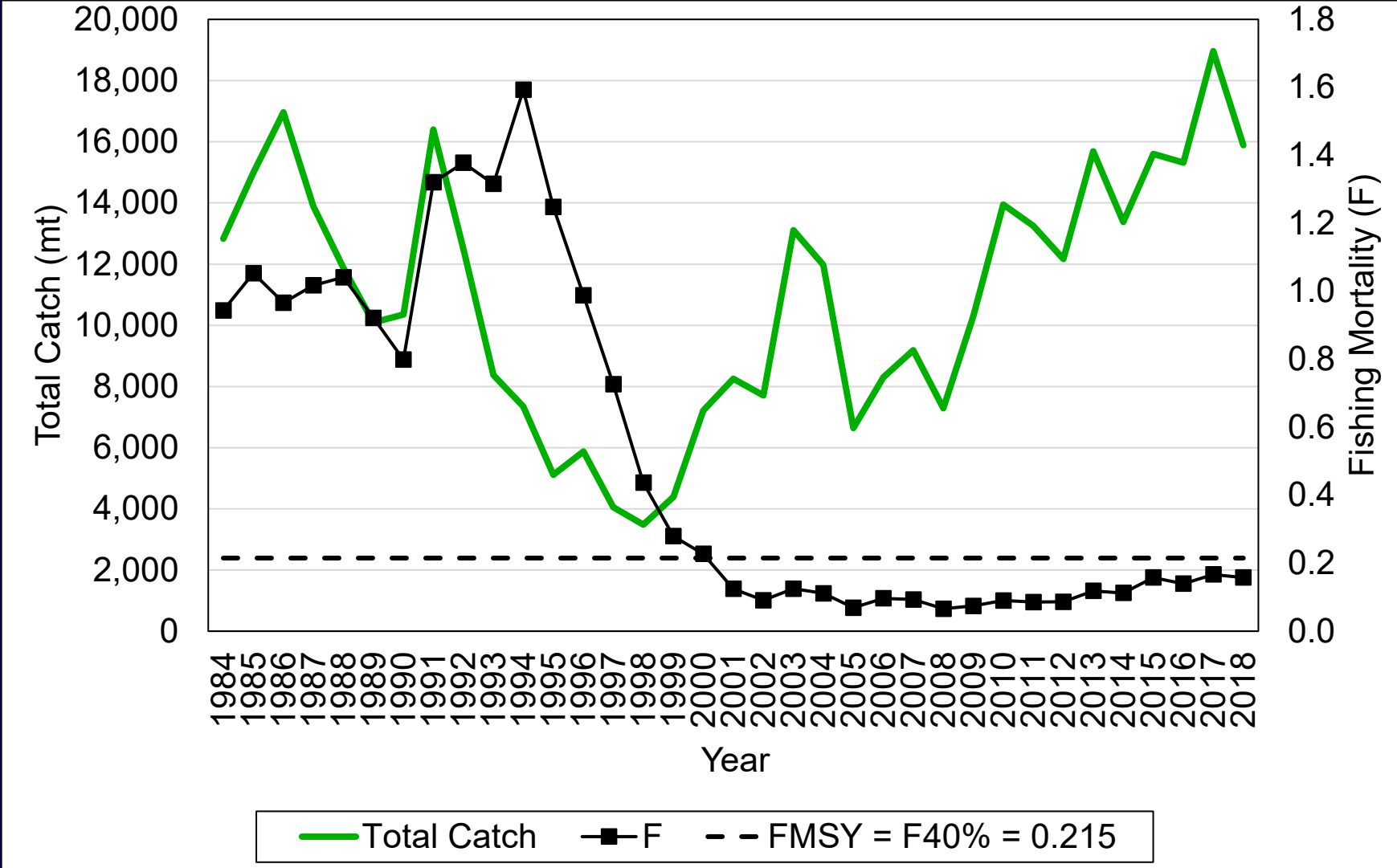
- 2019 assessment/2020 data update
- Fishery performance and AP comments
- Council risk policy change
- SSC ABC recommendation
- MC specifications recommendations

Council and Board Decision Points:

- Review ACLs, ACTs, quotas and RHLs, and commercial measures for 2021
 - Consider SSC and MC recommendations to revise limits according to new risk policy

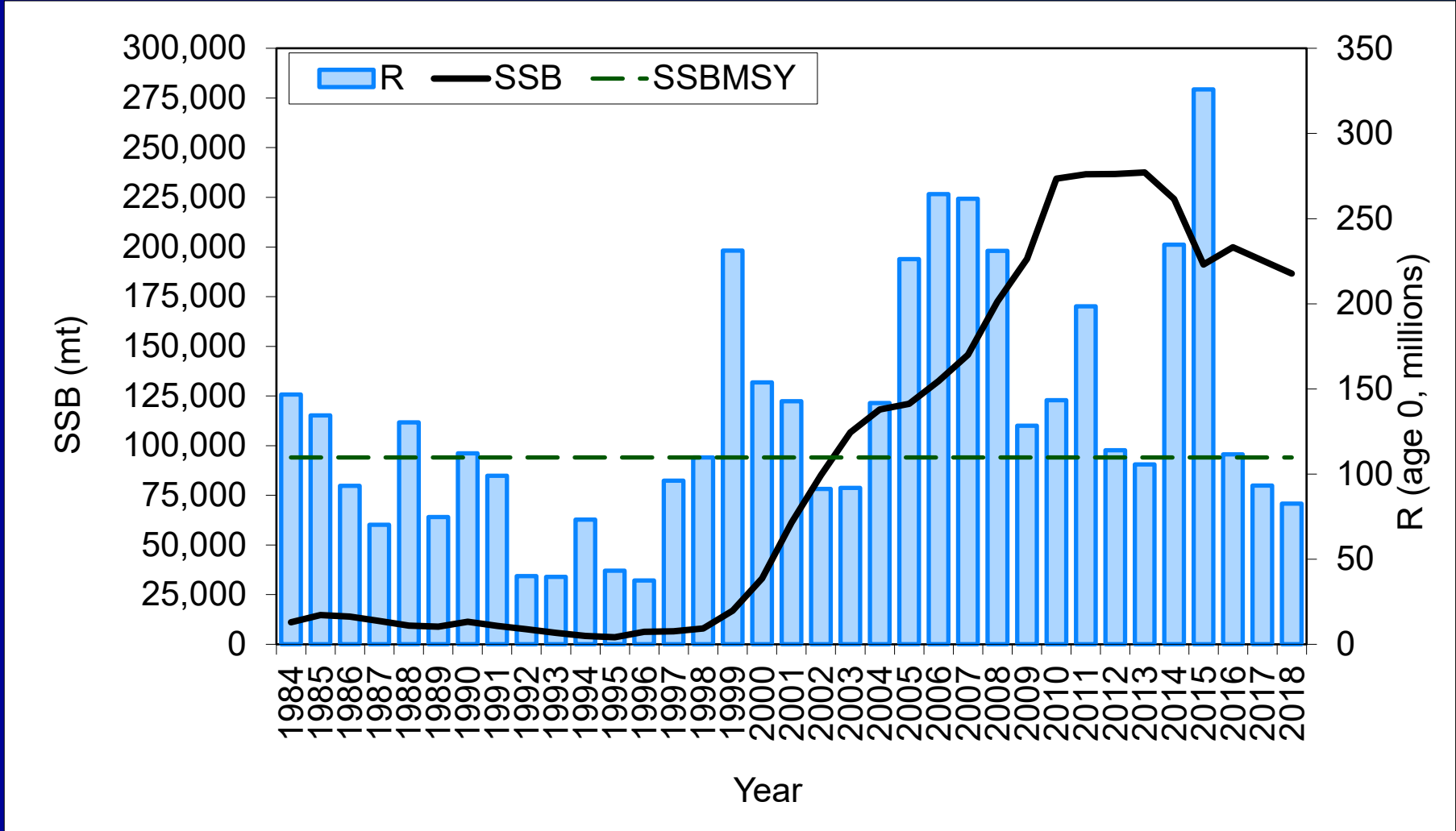
Fishing Mortality

2019 Operational Assessment



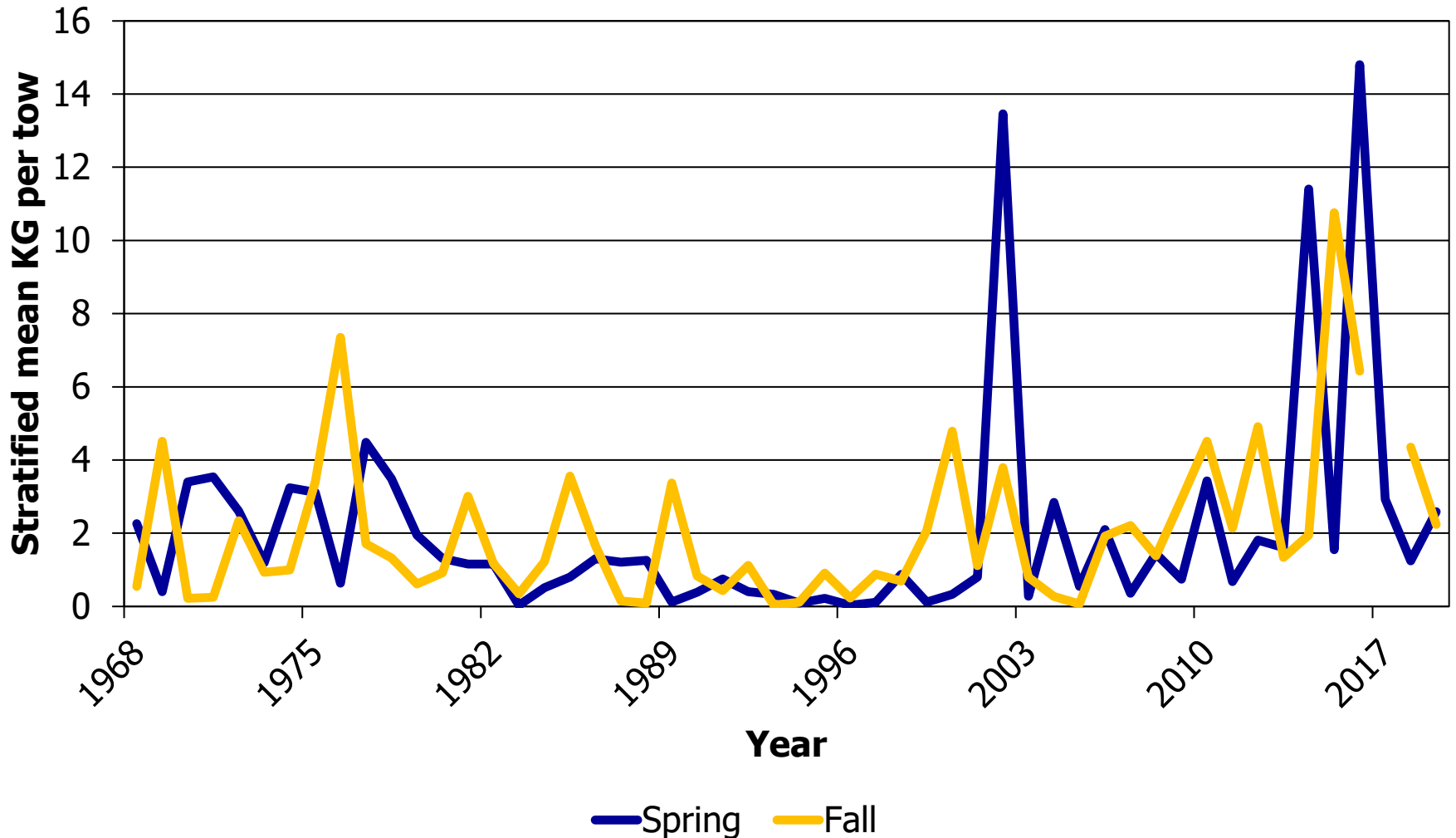
Biomass, Recruitment

2019 Operational Assessment

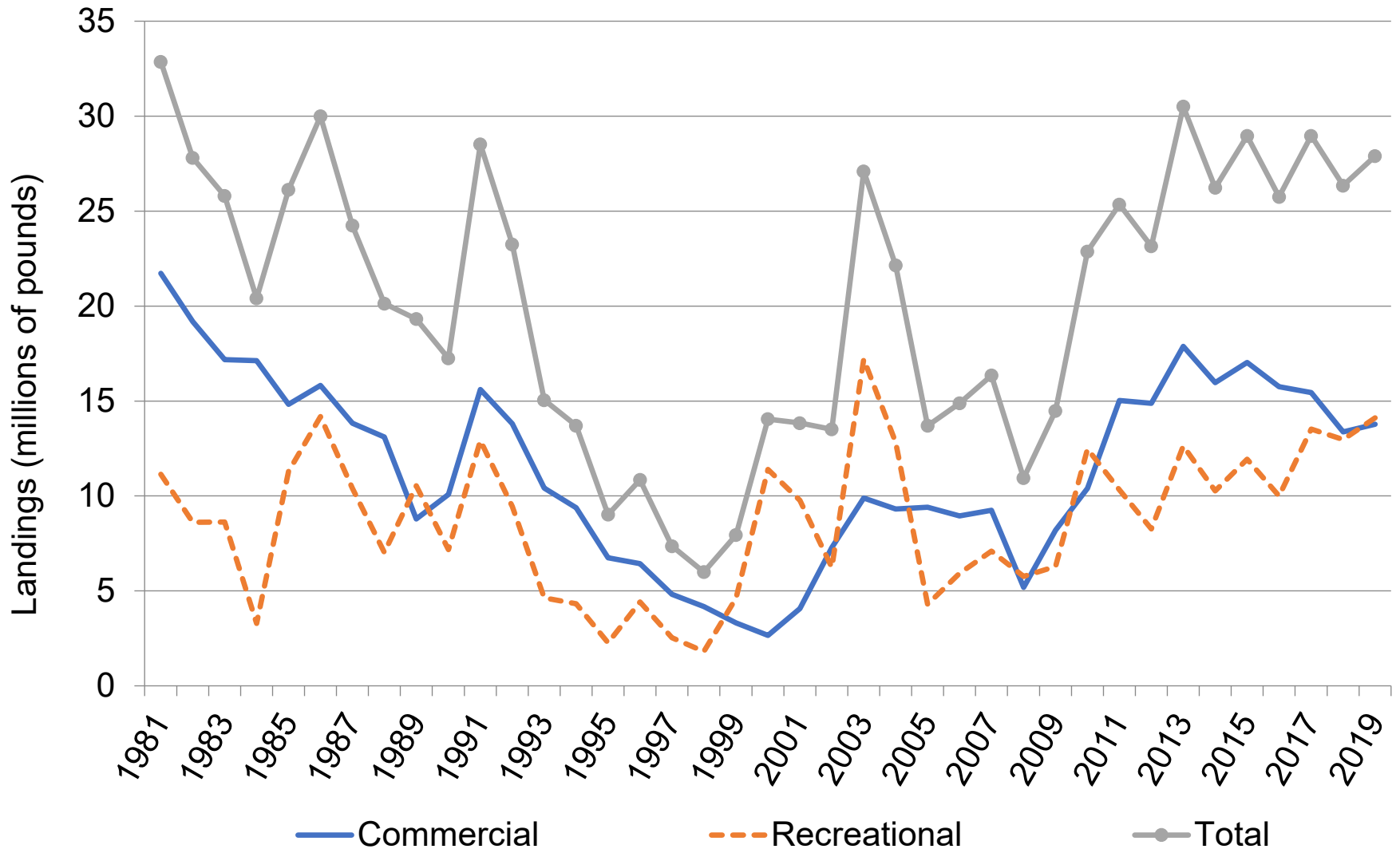


2020 Data Update

NEFSC Trawl Survey Scup Biomass Indices



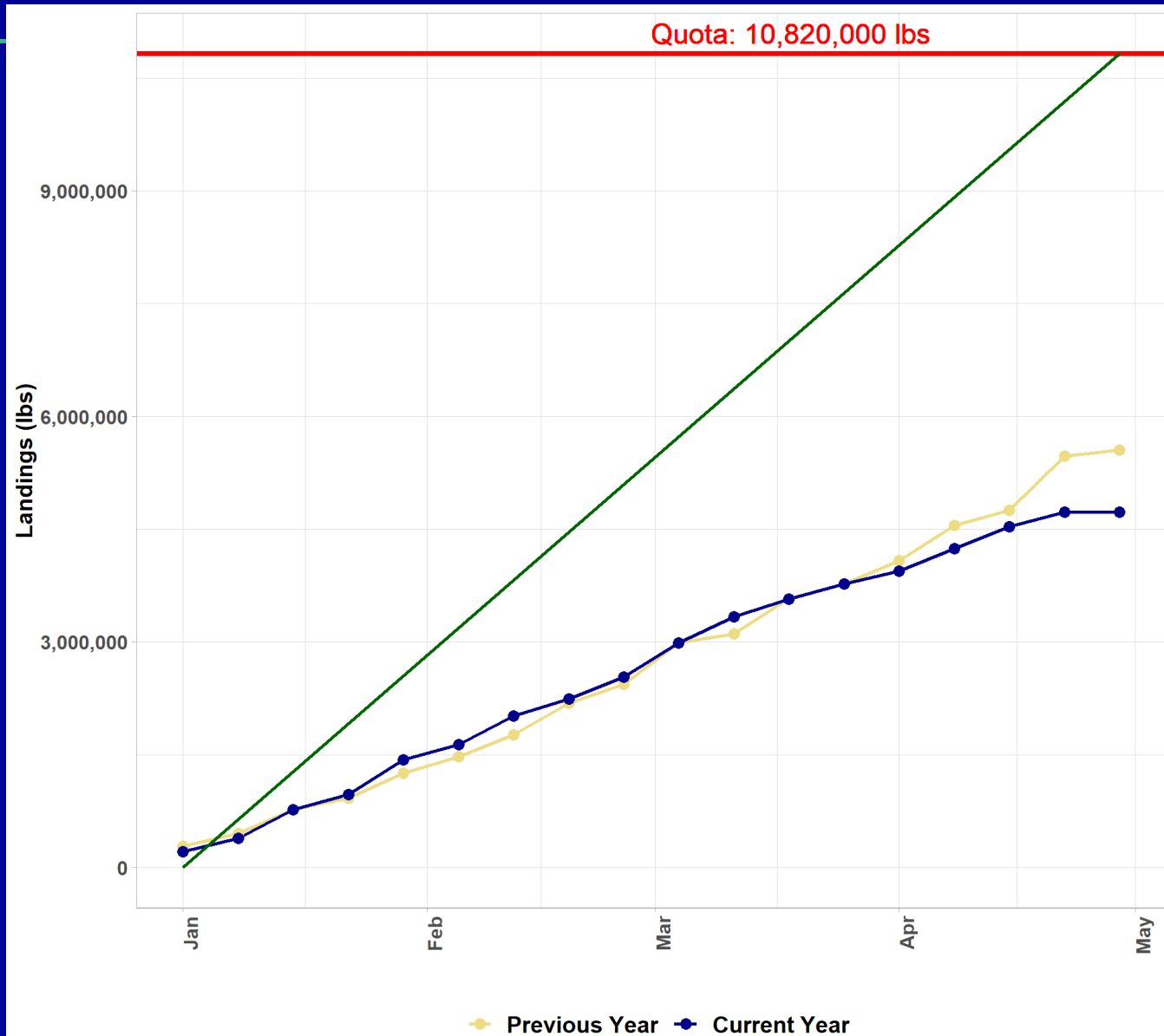
Fishery Landings



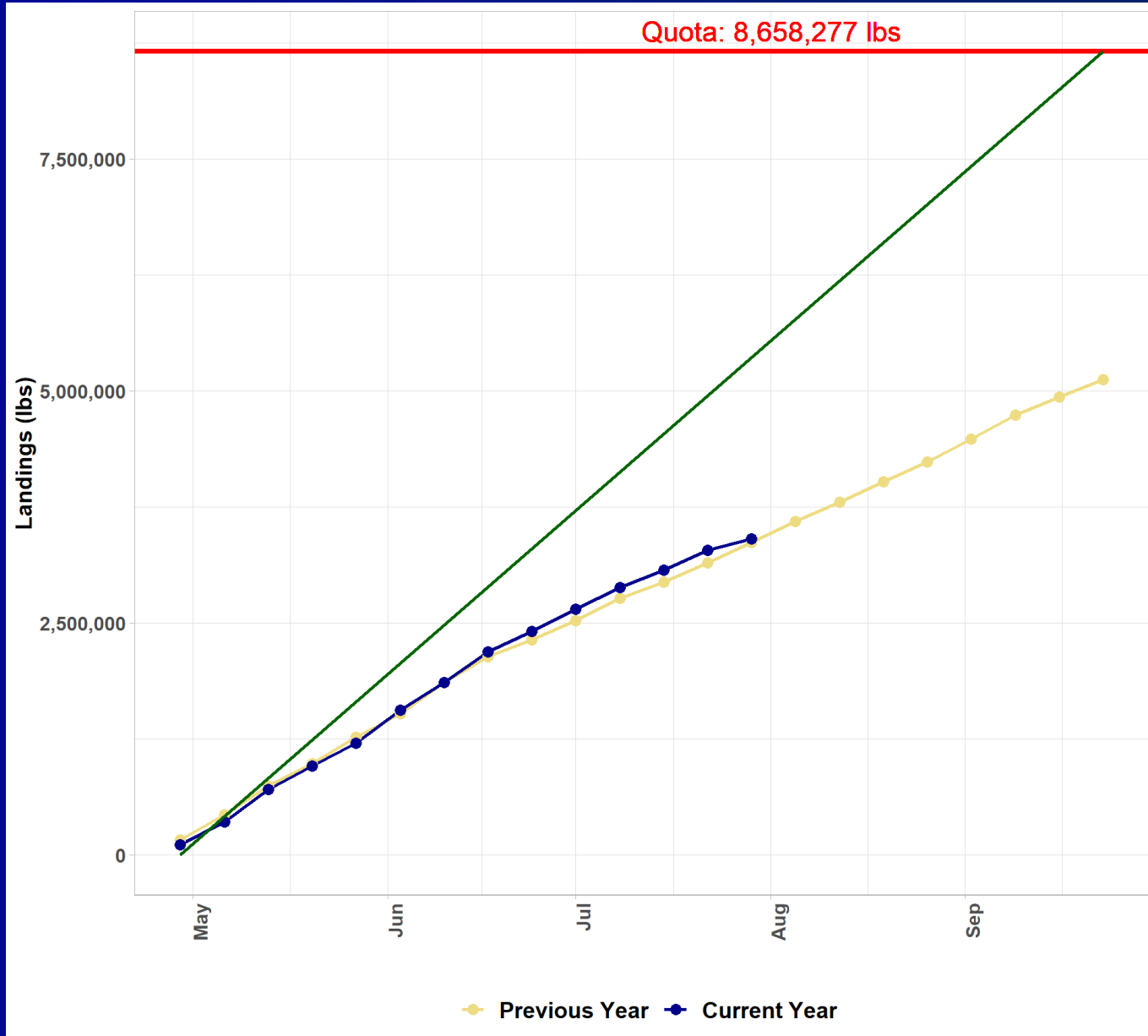
Commercial Quota and Landings

Year	Quota (mil lb)	Landings (mil lb)	% of quota landed
2015	21.23	17.03	80%
2016	20.47	15.76	77%
2017	18.38	15.44	84%
2018	23.98	13.37	55%
2019	23.98	13.78	57%
2020	22.23	--	--

2020 Landings Winter I Quota Period



2020 Summer Quota Period Landings



RHL Performance

Year	RHL (mil lb)	Harvest (old MRIP, mil lb)	% of RHL harvested (old MRIP)	Harvest (new MRIP, mil lb)
2015	6.80	4.41	65%	12.17
2016	6.09	4.26	70%	10.00
2017	5.50	5.42	98%	13.54
2018	7.37	5.61	76%	12.98
2019	7.37	--	--	14.12
2020	6.51	--	--	--

AP Fishery Performance Report

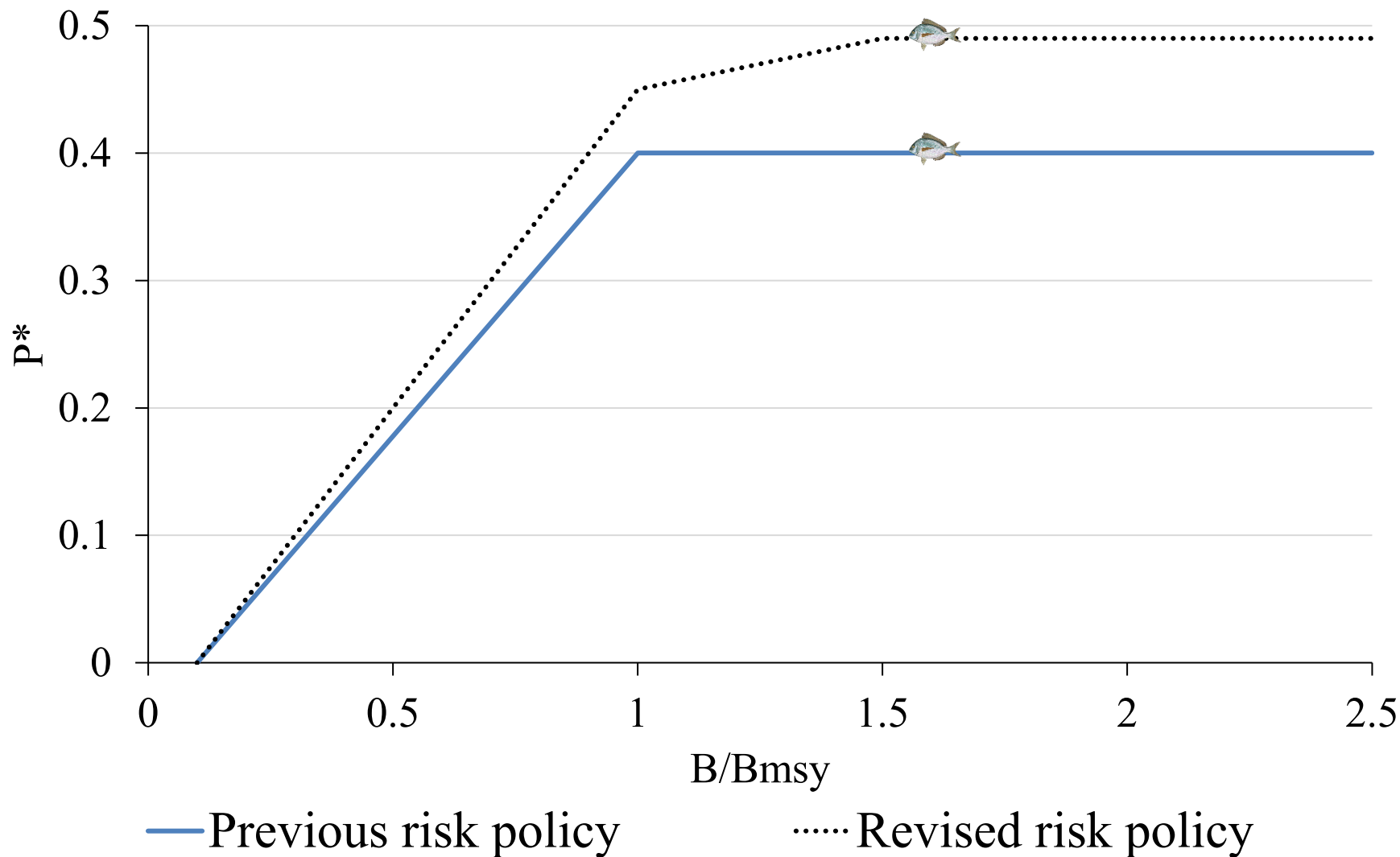
Covid-19 impacts

- How will MRIP account for data gaps?
- Reduced for-hire effort
- MA for-hire season is wave 3, partially closed this year
- Once open, reduced to 8 people per trip
- Scup markets depressed in January due to foreign markets

AP Fishery Performance Report

- Abundant but little to no market/customer demand
 - For-hire and commercial
- Recent years, biomass high and recruitment low due to removing spawning adults due to size restrictions
- Taken away small scup market
- Mesh size and min size should be decreased
- Cumulative length limit in rec fishery

Council Risk Policy Revisions



SSC ABC Recommendation

- Revised previously adopted 2021 ABC based on revisions to Council risk policy
 - Same OFL, 60% CV, and B/Bmsy ratio

	2021: Current	2021: SSC Rec.
OFL	35.30 mil lb (16,012 mt)	35.30 mil lb (16,012 mt)
ABC	30.67 mil lb (13,913 mt)	34.81 mil lb (15,791 mt)
P*	0.40	0.49

SSC Discussion

■ Highlights

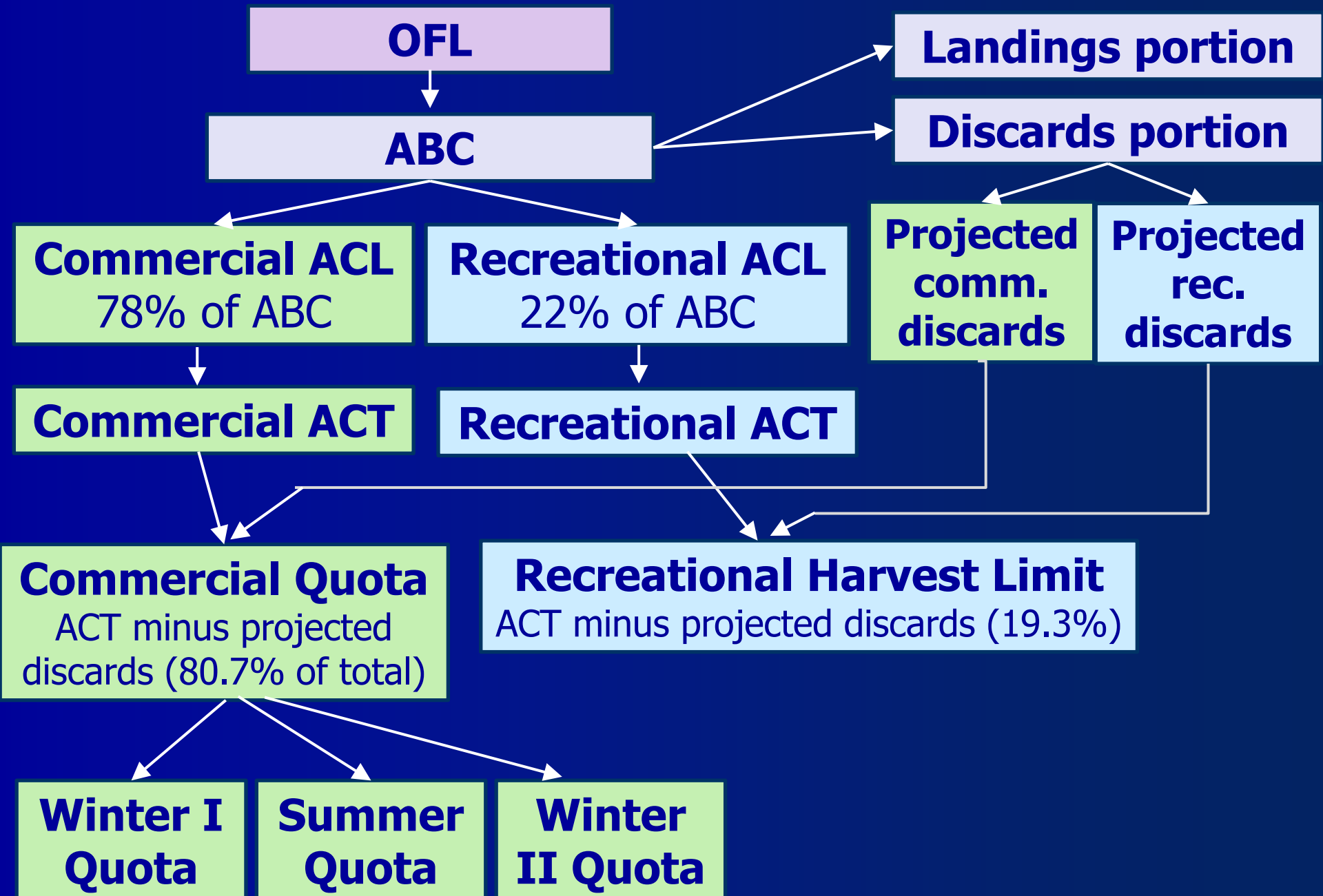
- SSC Recommends ABC=**15,791 mt**, a 13% increase from previous 2021 ABC
- Landings have been stable since 2013
- Removals in 2019 were below ABC; similar pattern expected in 2020
- SSB declining as predicted but still about 60% above Bmsy.

■ Uncertainties

- Recruitments for 2016-2018 appear to be below average but no trend
- Fishery independent indices for ages 4+ are less reliable

■ Considerations for 2021 Management Track Assessment

- Revisions to 2006-2018 selectivity may be warranted
- Improve discard estimates and discard mortality
- If low recruitment persists, consider change to basis for projections
- Continue investigations on influence of availability on fishery independent indices



MC Recommended ACLs, ACTs, and Landings Limits

Management measure	Current 2021		MC Rec. 2021	
	mil lb	mt	mil lb	mt
OFL	35.30	16,012	35.30	16,012
ABC	30.67	13,913	34.81	15,791
ABC discards	7.26	3,295	7.26	3,295
Commercial ACL	23.92	10,852	27.15	12,317
Commercial ACT	23.92	10,852	27.15	12,317
Projected commercial discards	5.86	2,659	6.65	3,018
Commercial quota	18.06	8,194	20.50	9,299
Recreational ACL	6.75	3,061	7.66	3,474
Recreational ACT	6.75	3,061	7.66	3,474
Projected recreational discards	1.40	636	1.59	722
RHL	5.34	2,424	6.07	2,752

Commercial Measures

MC recommended no changes for 2021

- Quota period possession limits and quota rollover provisions
- Minimum fish size
- Gear requirements
- Incidental possession limits

Council and Board Decision Points and SSC/MC Recommendation

- Consider SSC and MC recommendations to revise ACLs, ACTs, quotas and RHLs according to new risk policy

Management measure	Current 2021		MC Rec. 2021	
	mil lb	mt	mil lb	mt
OFL	35.30	16,012	35.30	16,012
ABC	30.67	13,913	34.81	15,791
ABC discards	7.26	3,295	7.26	3,295
Commercial ACL=ACT	23.92	10,852	27.15	12,317
Projected commercial discards	5.86	2,659	6.65	3,018
Commercial quota	18.06	8,194	20.50	9,299
Recreational ACL=ACT	6.75	3,061	7.66	3,474
Projected recreational discards	1.40	636	1.59	722
RHL	5.34	2,424	6.07	2,752

Questions



Whole scup with tomatillo sauce. — Gavin Smith mvtimes.com